

Characteristics

The pilot operated pressure relief valves from the Parker Manapak series PRM are in sandwich design for easy configuration of stack systems. The reducing function is located in port P except for size NG10 (PRM3 AA and BB, see ordering code).

The pressure reduction for the desired connecting port is achieved by internal connections of the pilot and drain lines with the corresponding channels.

Features

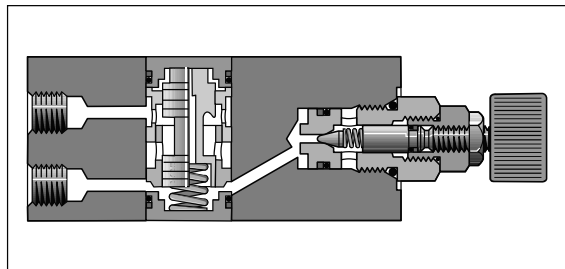
- The valve bodies of the Parker Manapak valve series PRM are made of steel.
- The control pressure range can be set by slotted head screw, knob, or knob with Key lock.
- Pressure gauge/measuring connections are available in the valve body.
- Piloting results in a flat p/Q performance curve.
- PRM3 - NG10 (CETOP 5)
 PRM4 - NG16 (CETOP 7)
 PRM6 - NG25 (CETOP 8)

Pilot Operated Pressure Reducing Valve Series PRM

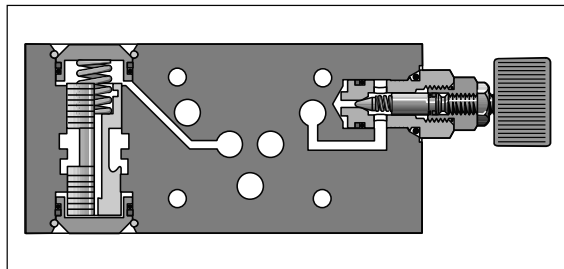

PRM3PP



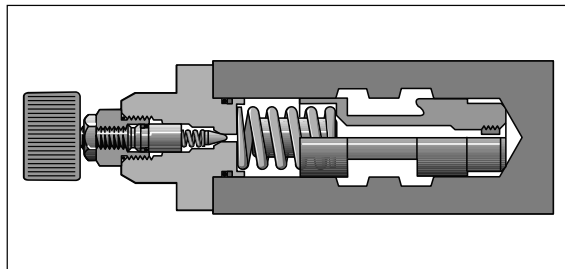
PRM6



PRM3PP



PRM3AA or PRM3BB

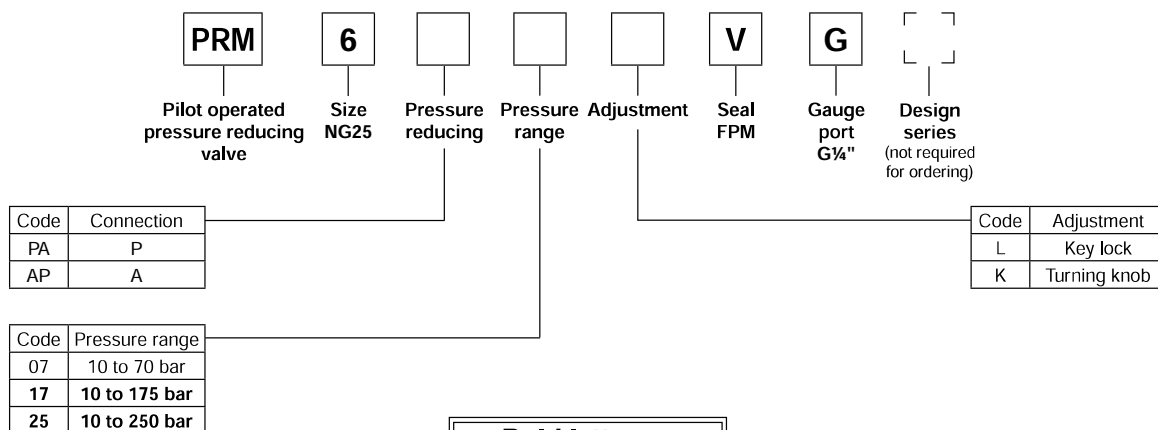
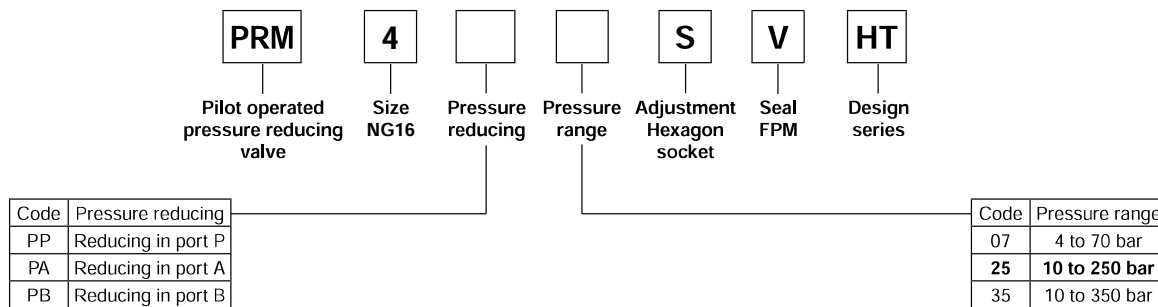
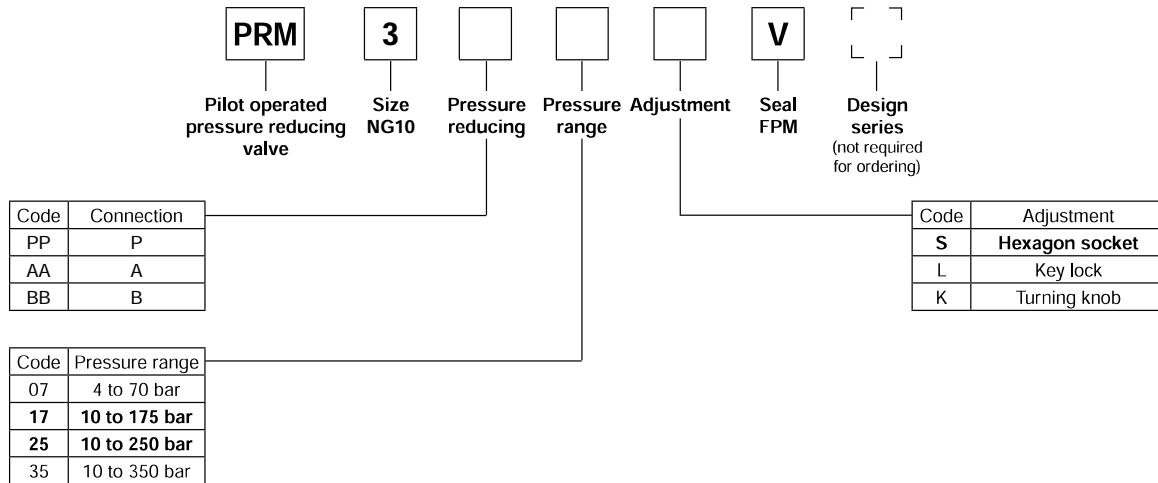


PRM4 and PRM6

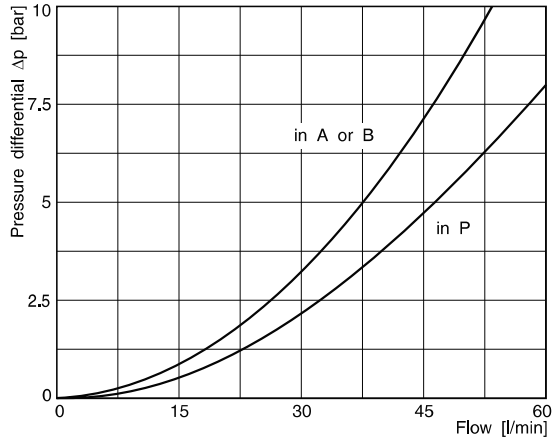
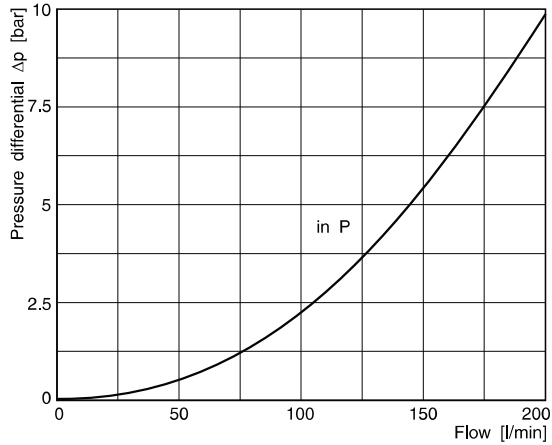
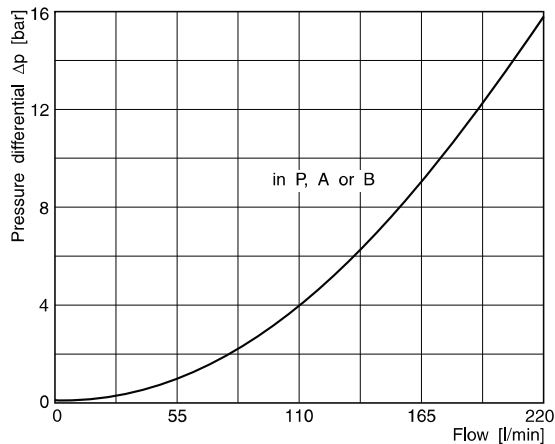
Technical data

General				
Series		PRM3	PRM4	PRM6
Size		NG10	NG16	NG25
Mounting interface		ISO 4401		
Ambient temperature	[°C]	-20...+50		
Weight	[kg]	2.7	5.0	5.6
MTTF _p value	[years]	75		
Hydraulic				
Max. operating pressure	[bar]	350	350	250
Pressure reduction in channel		P, A, B	P	P, A
Fluid		Hydraulic oil according to DIN 51524...51525		
Fluid temperature	[°C]	-20...+80		
Viscosity range	[cSt] / [mm ² /s]	20...380		
Filtration		ISO 4406 (1999); 18/16/13 (meet NAS 1638:7)		

Ordering Code

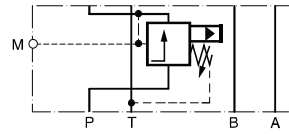
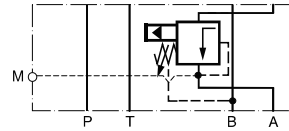
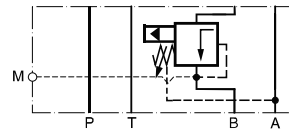
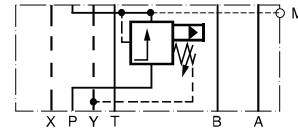
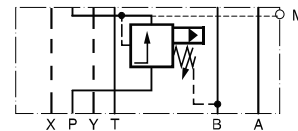
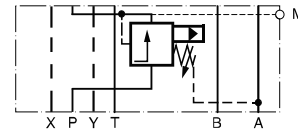


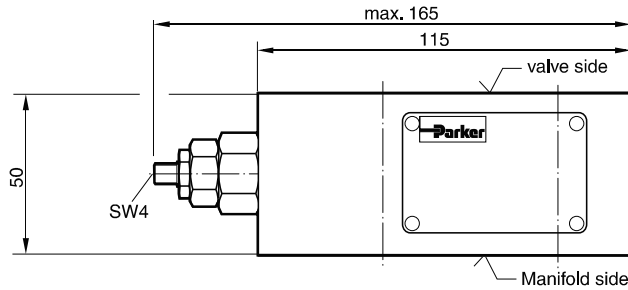
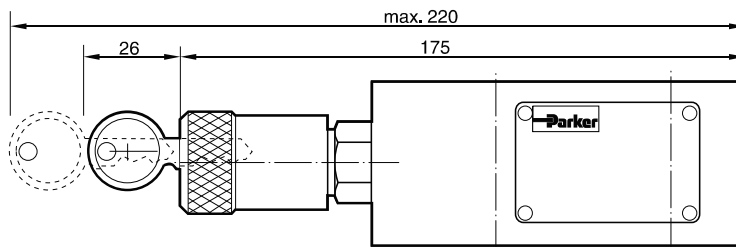
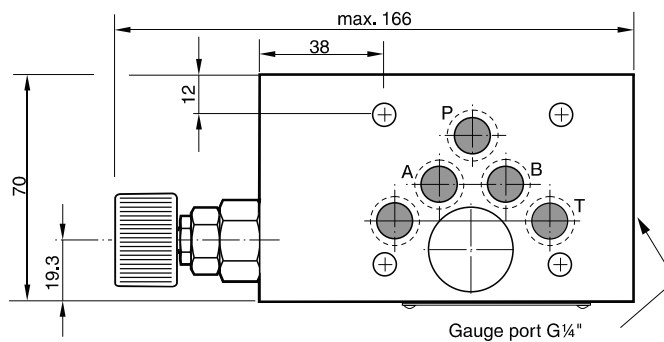
**Bold letters =
Short-term availability**

$\Delta p/Q$ performance curves
PRM3

PRM4

PRM6


All characteristic curves measured with HLP46 at 50°C.

PRM UK.INDD CM 07.09.11

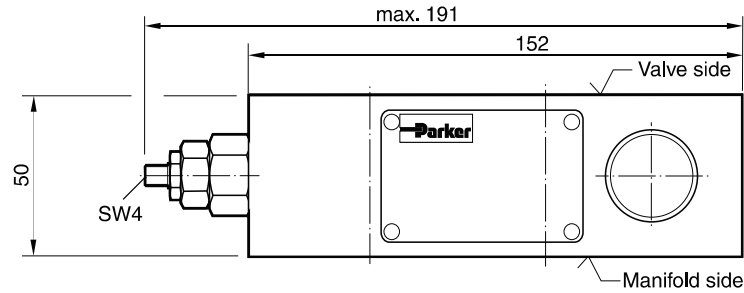
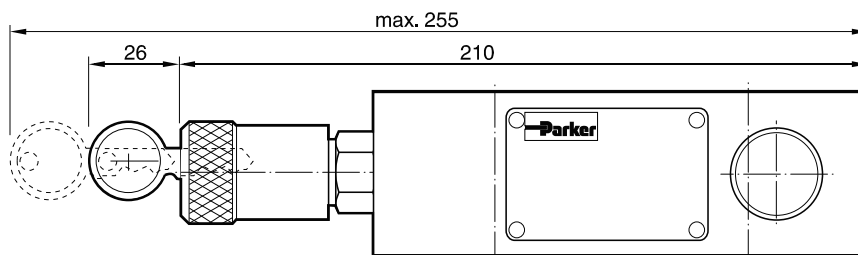
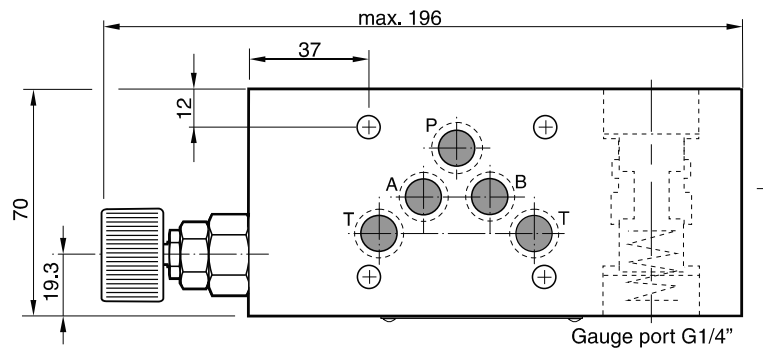
Schematics
PRM3PP

PRM3AA

PRM3BB

PRM4PP
PRM4PA
PRM6PA

PRM6AP

PRM4PB


Dimensions
PRM3PP
Adjustment code S

Adjustment code L

Adjustment code K


Seal kit PRM3PP	
Seal	Order code
V	SK-PRM3-V-30

Note:

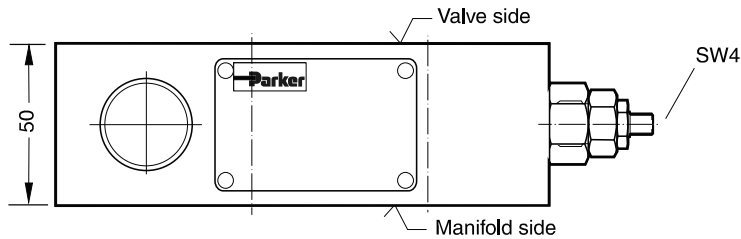
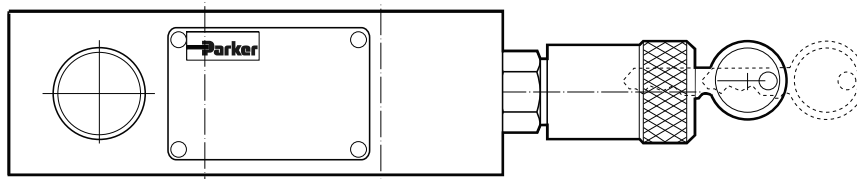
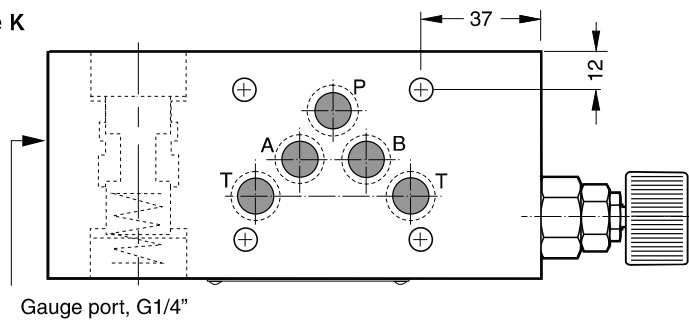
The O-rings for sealing the connecting surface of the manifold side are included. The O-rings and the positioning pins are always mounted on the manifold side.

Dimensions
PRM3AA
Adjustment code S

Adjustment code L

Adjustment code K


Seal kit PRM3AA	
Seal	Order code
V	SK-PRM3-V-11

Note:

The O-rings for sealing the connecting surface of the manifold side are included. The O-rings and the positioning pins are always mounted on the manifold side.

Dimensions
PRM3BB
Adjustment code S

Adjustment code L

Adjustment code K


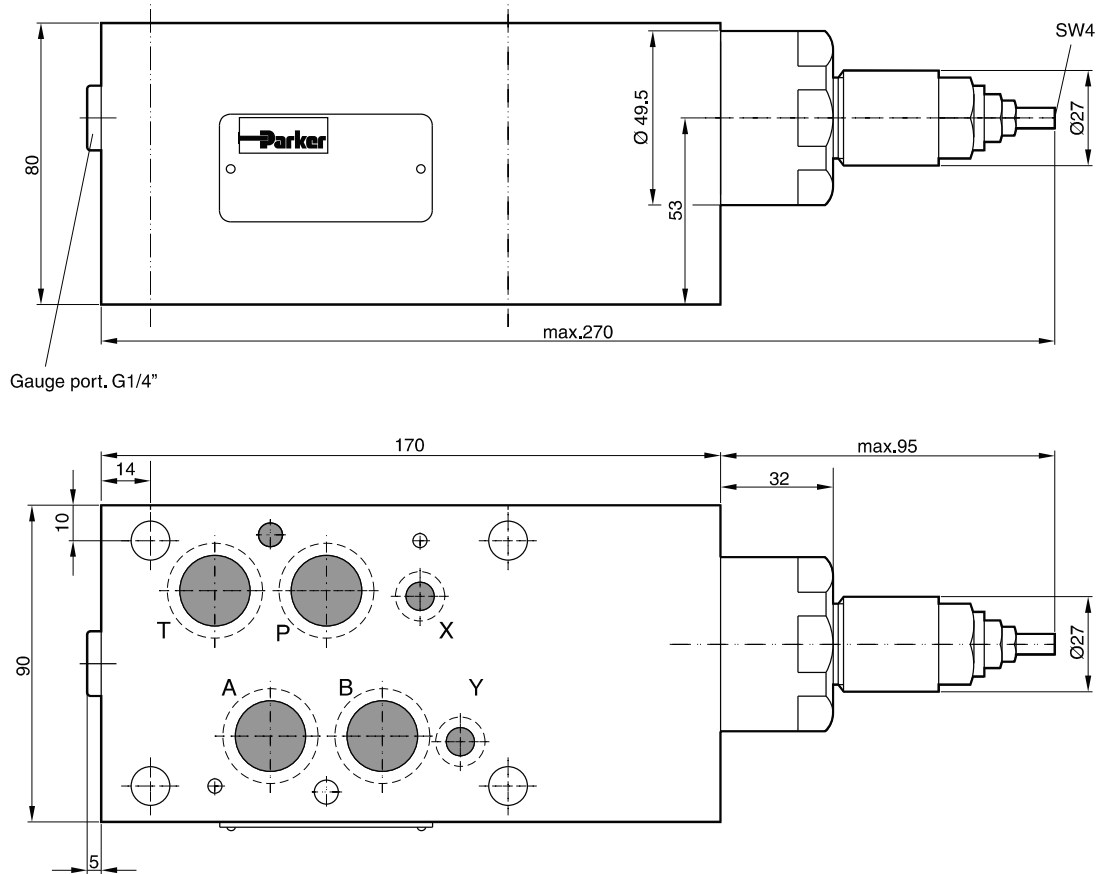
Seal kit PRM3BB	
Seal	Order code
V	SK-PRM3-V-11

Note:

The O-rings for sealing the connecting surface of the manifold side are included. The O-rings and the positioning pins are always mounted on the manifold side.

Dimensions
PRM4PP

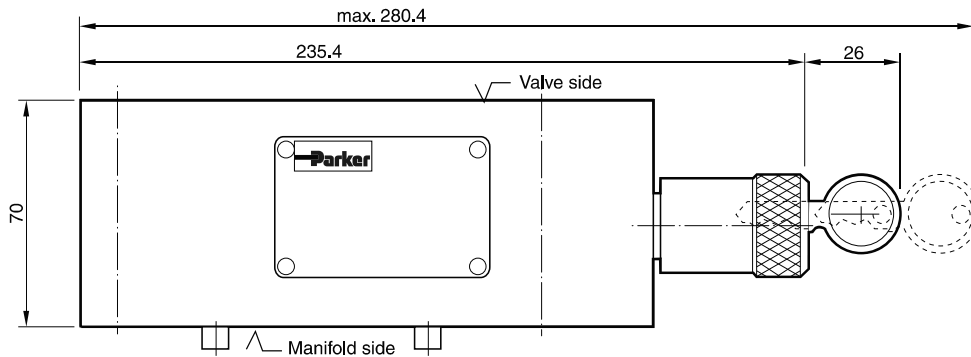
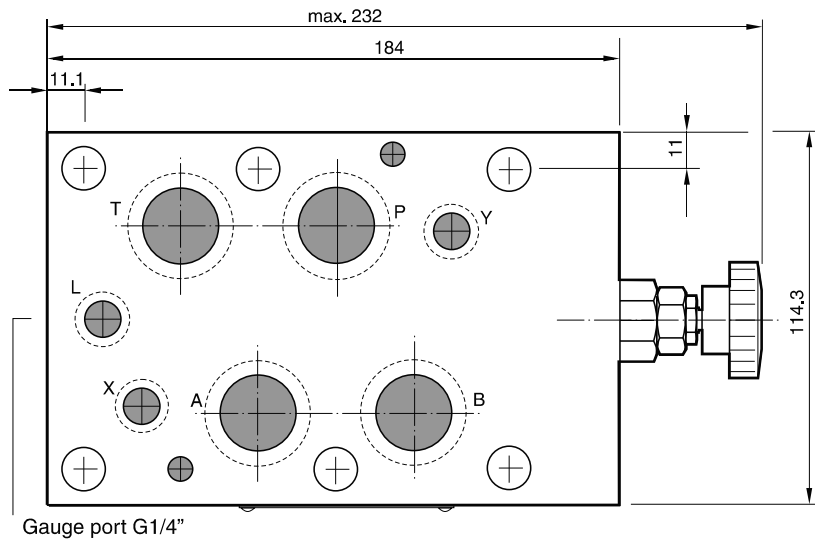
Adjustment code S



Seal kit PRM4	
Seal	Order code
V	SK-PRM4-V-10

Note:

The O-rings for sealing the connecting surface of the manifold side are included. The O-rings and the positioning pins are always mounted on the manifold side.

Dimensions
PRM6
Adjustment code L

Adjustment code K


Seal kit PRM6	
Seal	Order code
V	SK-PRM6-V-25

Note:

The O-rings for sealing the connecting surface of the manifold side are included. The O-rings and the positioning pins are always mounted on the manifold side.