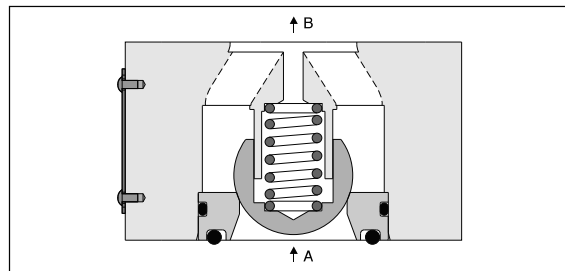
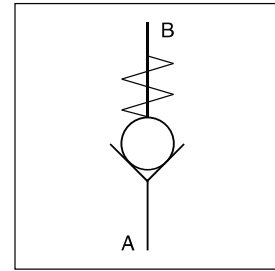
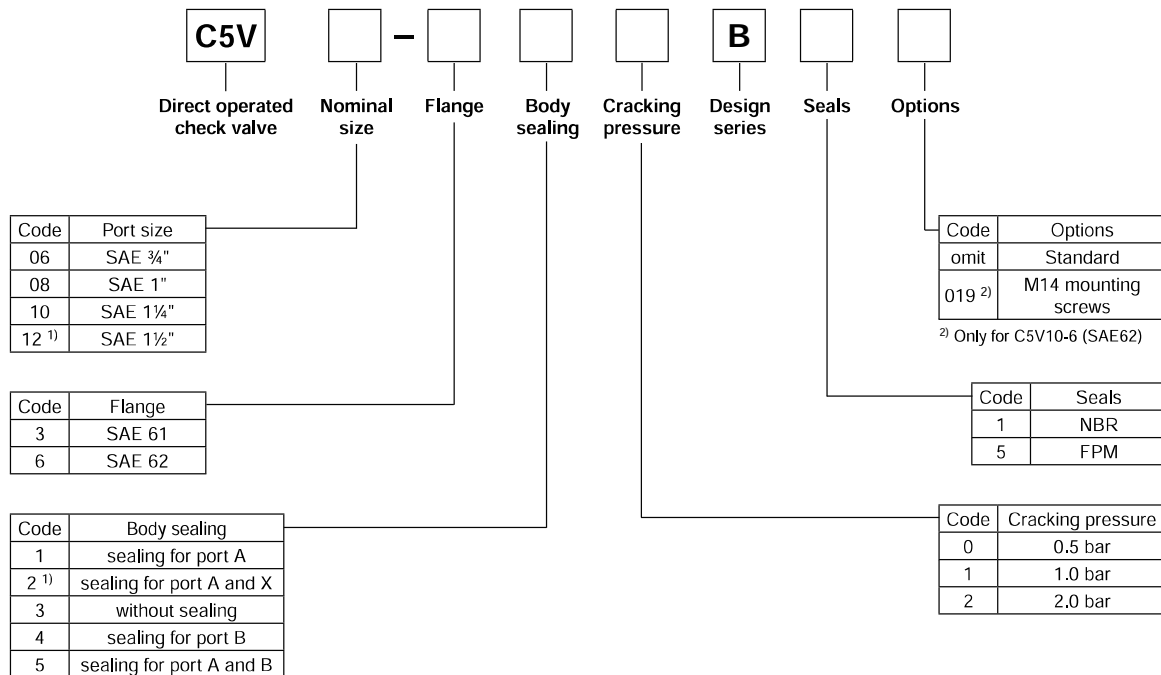


Characteristics / Ordering Code
**Direct Operated Check Valve
Series C5V**

Direct operated check valves series C5V provide free flow in one direction and block the flow in the counter direction. The SAE flanges allow to mount the C5V directly on the pressure port of pumps for protection against pressure shocks from the system.

Features

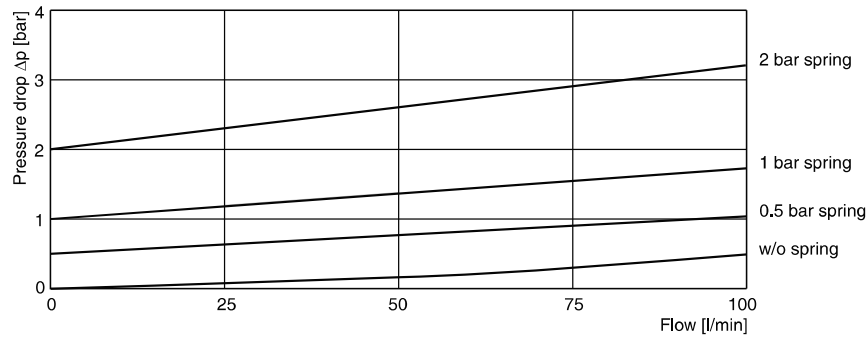
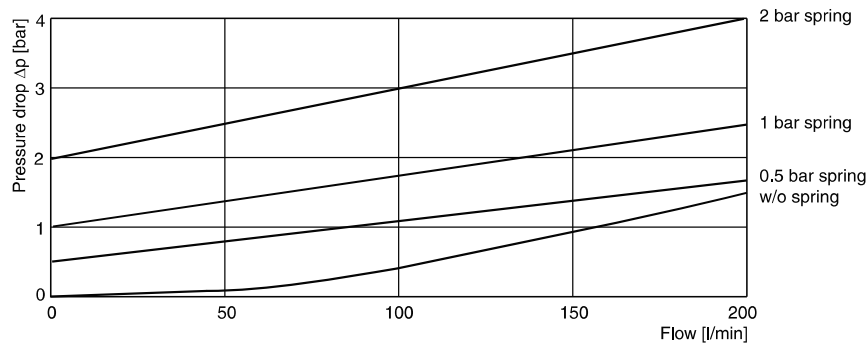
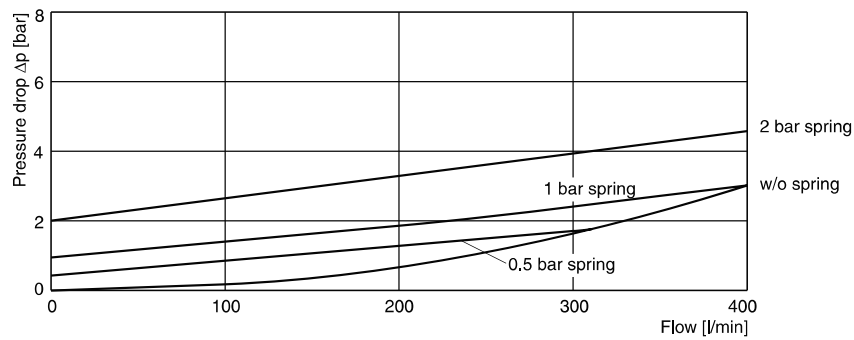
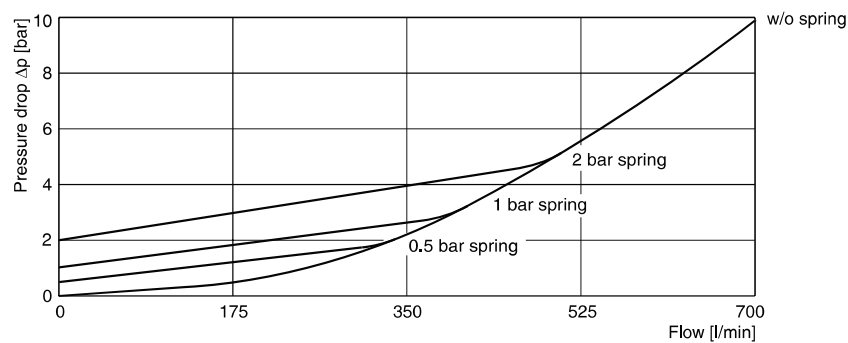
- Direct operated check valve
- SAE61 and SAE62 flange
- 4 sizes (SAE 3/4", 1", 1 1/4", 1 1/2")
- 3 springs
- 5 options for body sealing


Ordering Code


¹⁾ For combination with R5U unloading valve (SAE61 only)

Technical Data

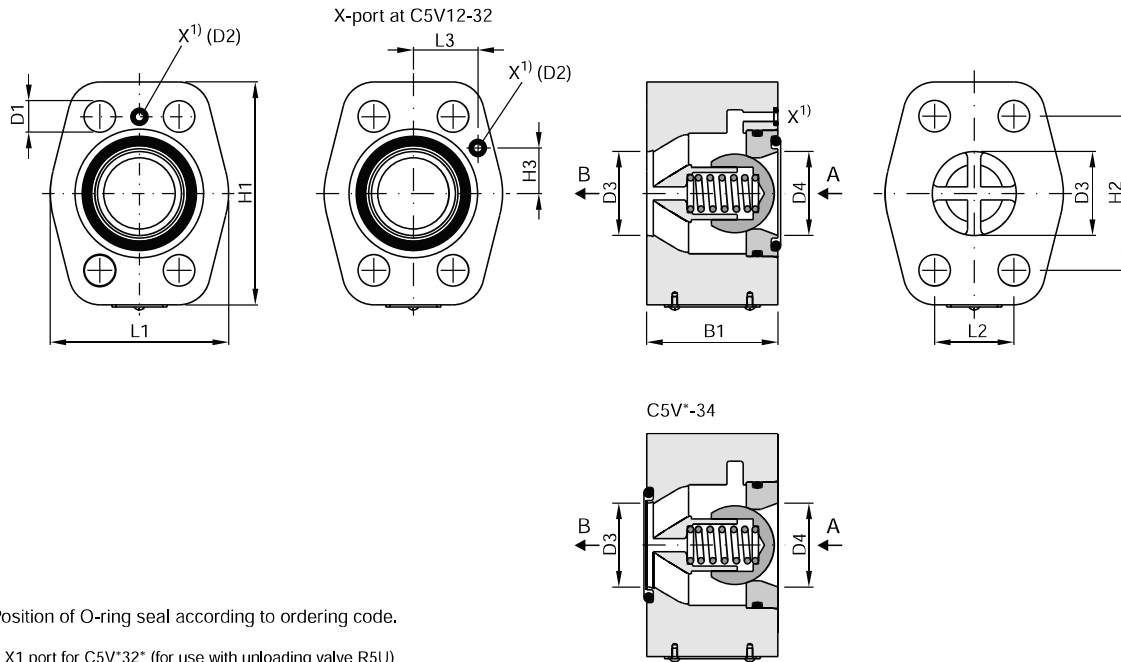
General						
Size			06 (¾")	08 (1")	10 (1¼")	12 (1½")
Mounting	2-port inline flange (SAE61 and 62)					
Mounting position	unrestricted					
Ambient temperature		[°C]	-20...+50			
MTTF _D value		[years]	150			
Weight		[kg]	0.6	0.9	1.3	1.8
Hydraulic						
Max. operating pressure	SAE61	[bar]	350	350	280	210
	SAE62	[bar]	420	420	420	420
Nominal flow		[l/min]	100	200	400	750
Fluid	Hydraulic oil according to DIN 51524...51525					
Fluid temperature		[°C]	-20...+80			
Viscosity	permitted	[cSt] / [mm ² /s]	10...650			
	recommended	[cSt] / [mm ² /s]	30			
Filtration	ISO 4406 (1999); 18/16/13 (meet NAS 1638: 7)					

Characteristic Curves
C5V06

C5V08

C5V10

C5V12


All characteristic curves measured with HLP46 at 50°C.

C5V UK.INDD CM 07.09.11



Dimensions


Position of O-ring seal according to ordering code.

¹⁾ X1 port for C5V*32* (for use with unloading valve R5U)

Seal kits		
NG	NBR	FPM
06	S26-75409-0	S26-75409-5
08	S26-75410-0	S26-75410-5
10	S26-75411-0	S26-75411-5
12	S26-75412-0	S26-75412-5

Series	Nominal Size	L1	L2	L3	H1	H2	H3	B1	D1	D2	D3 + 0.8	D4	
C5V06	3/4"	SAE61	48	22.2	27.2	64	47.6	22.4	45	10.5	Ø3	19	19
		SAE62	48	23.8	27.2	64	50.8	22.4	45	10.5	-	19	19
C5V08	1"	SAE61	60	26.2	27.2	74	52.4	22.4	45	10.5	Ø3	25	25
		SAE62	60	27.8	27.2	74	57.2	22.4	45	12.5	-	25	25
C5V10	1 1/4"	SAE61	68	30.2	27.2	85	58.7	22.4	50	12.5	Ø3	32	32
		SAE62	68	31.8	27.2	85	66.7	22.4	50	13.5 ²⁾	-	32	32
C5V12	1 1/2"	SAE61	80	35.7	27.2	104	69.8	22.4	50	13.5	Ø3	42	38
		SAE62	80	36.5	27.2	104	79.4	22.4	50	17	-	42	38

²⁾ D1 = 15 at option code 019 for M14 mounting screws

C5V UK.INDD CM 07.09.11

