

Catalogue HY11-3500/UK

Characteristics / Technical Data
**Pilot Operated Pressure Relief Valve
Series RM**

The pilot operated pressure relief valves from the Parker Manapak series RM are in sandwich design for easy configuration of stack systems. Depending on type, pressure limiting can be achieved in ports P, A or B with unloading to port T.

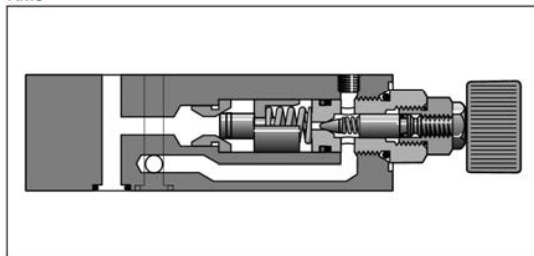
RM valves may only be mounted in the defined mounting position.

Features

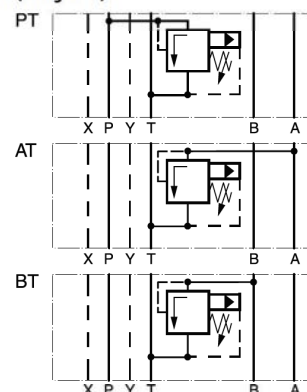
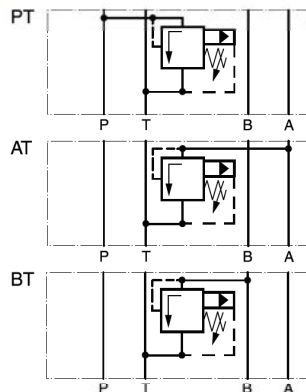
- The valve bodies of the Parker Manapak valve series RM are made of steel.
- The pressure can be set by slotted head screw, knob, or knob with DIN-lock.
- Piloting results in a flat p/Q performance curve.
- The orifices located in the main spool limit the pilot oil flow.



RM6



RM3

RM4-NG16
RM6-NG25 (only PT)
Schematics
RM3-NG10

Technical data

General	
Design	Pilot operated pressure relief valve
Actuation	hydraulic
Size	NG10 NG16 NG25
Mounting interface	ISO 4401
Mounting position	unrestricted
Ambient temperature [°C]	-40...+50
MTTF _D value [years]	150
Weight [kg]	3.7 4.9 5.9
Hydraulic	
Max. operating pressure [bar]	350
Fluid	Hydraulic oil according to DIN 51524...525
Fluid temperature [°C]	-20...+80
Viscosity recommended [cSt]/[mm ² /s]	30...80
Viscosity permitted [cSt]/[mm ² /s]	20...380
Filtration	ISO 4406 (1999); 18/16/13 (meet NAS 1638:7)

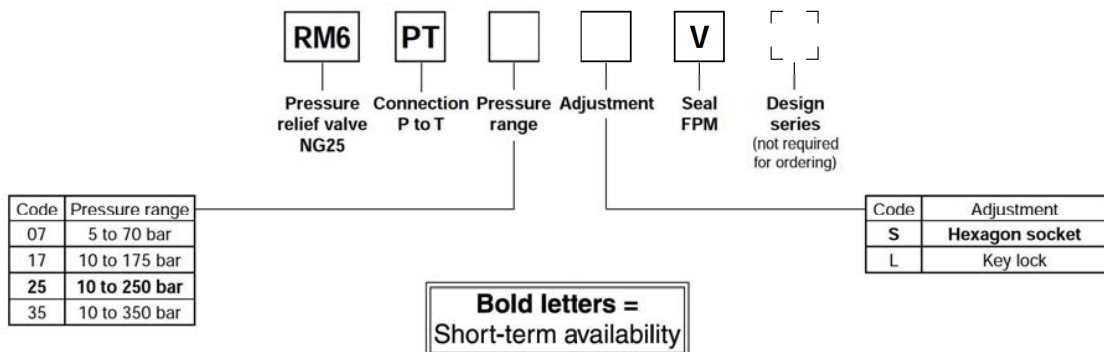
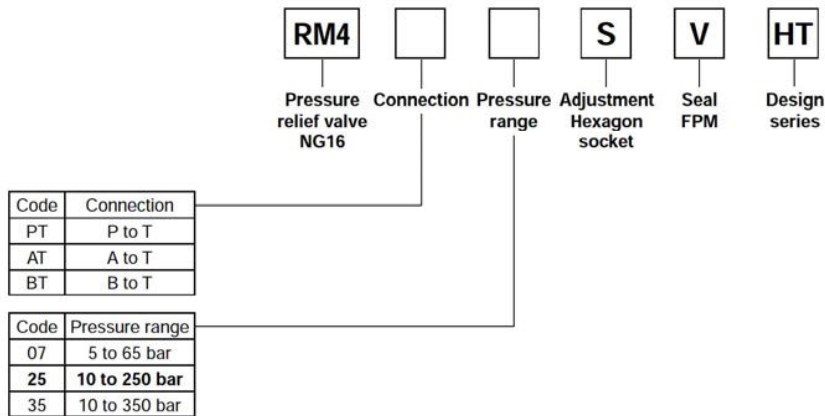
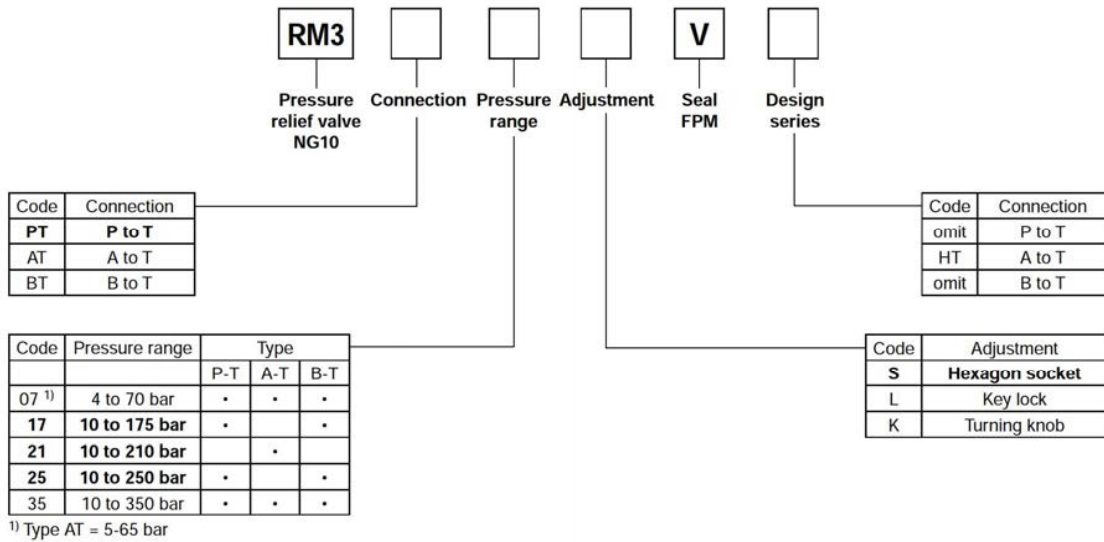
RM UK.INDD CM 07.09.11



Catalogue HY11-3500/UK

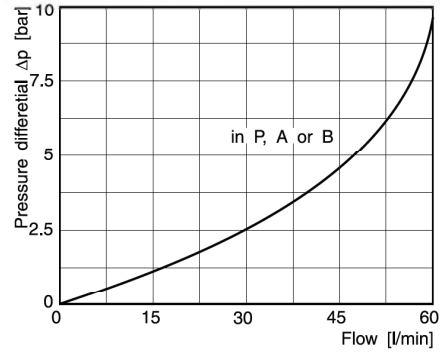
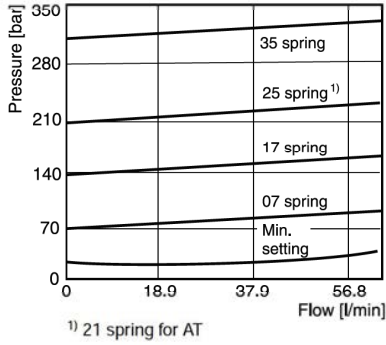
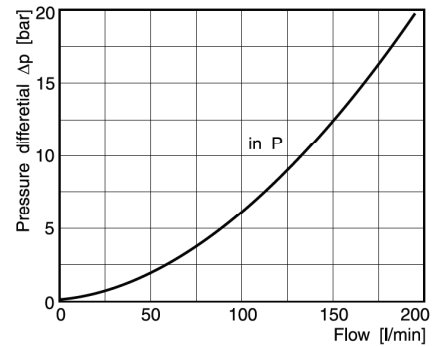
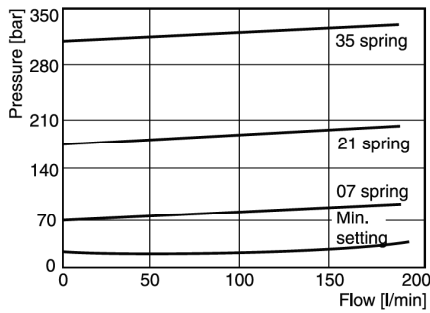
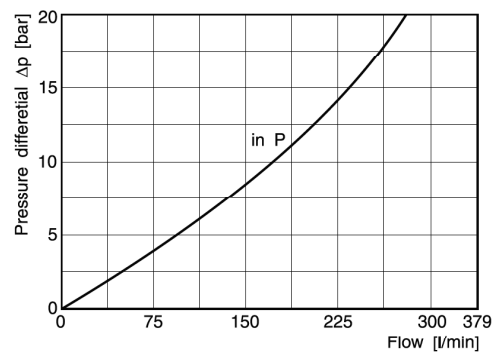
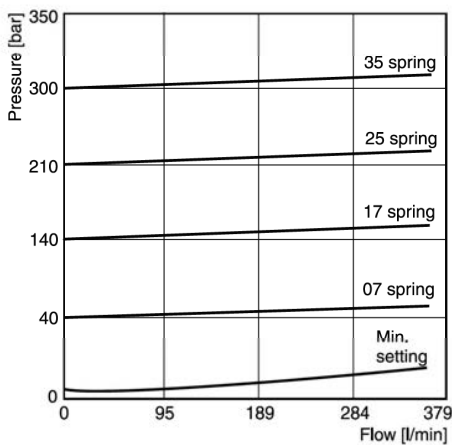
Pilot Operated Pressure Relief Valve Series RM

Ordering Code



RM UK.INDD CM 07.09.11



**p/Q performance curves
 RM3**

RM4

RM6


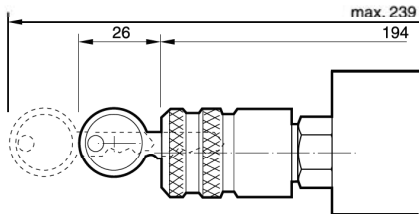
All characteristic curves measured with HLP46 at 50°C.

RM UK.INDD CM 07.09.11

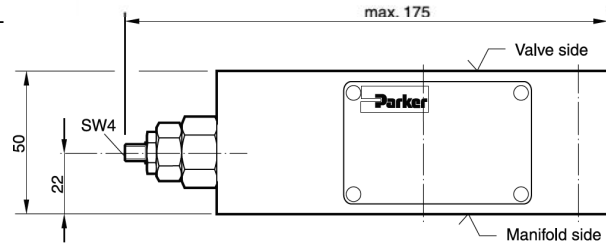


Dimensions
RM3 PT/BT

Adjustment code L



Adjustment code S

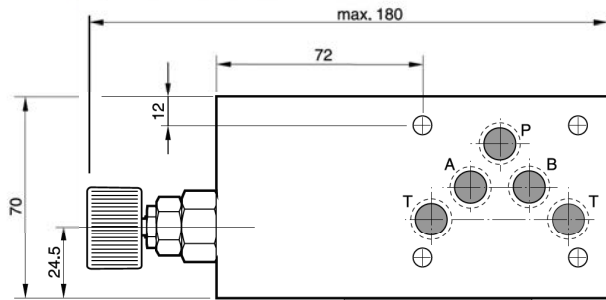


Seal kit RM3	
Seal	Order code
V	SK-RM3-V-11

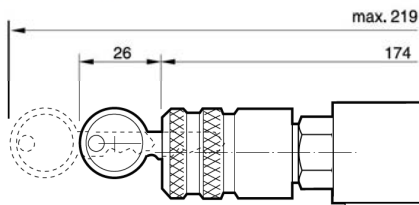
Note:

The O-rings for sealing the connecting surface of the manifold side are included. The O-rings and the positioning pins are always mounted on the manifold side.

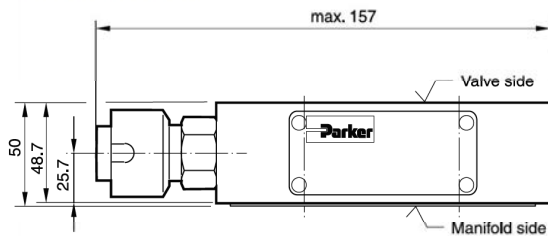
Adjustment code K


RM3 AT*HT

Adjustment code L

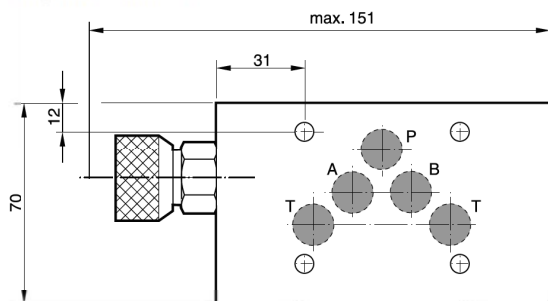


Adjustment code S


Note:

The seal plate and the O-rings for sealing the connecting surface of the manifold side are included with the HT model.

Adjustment code K



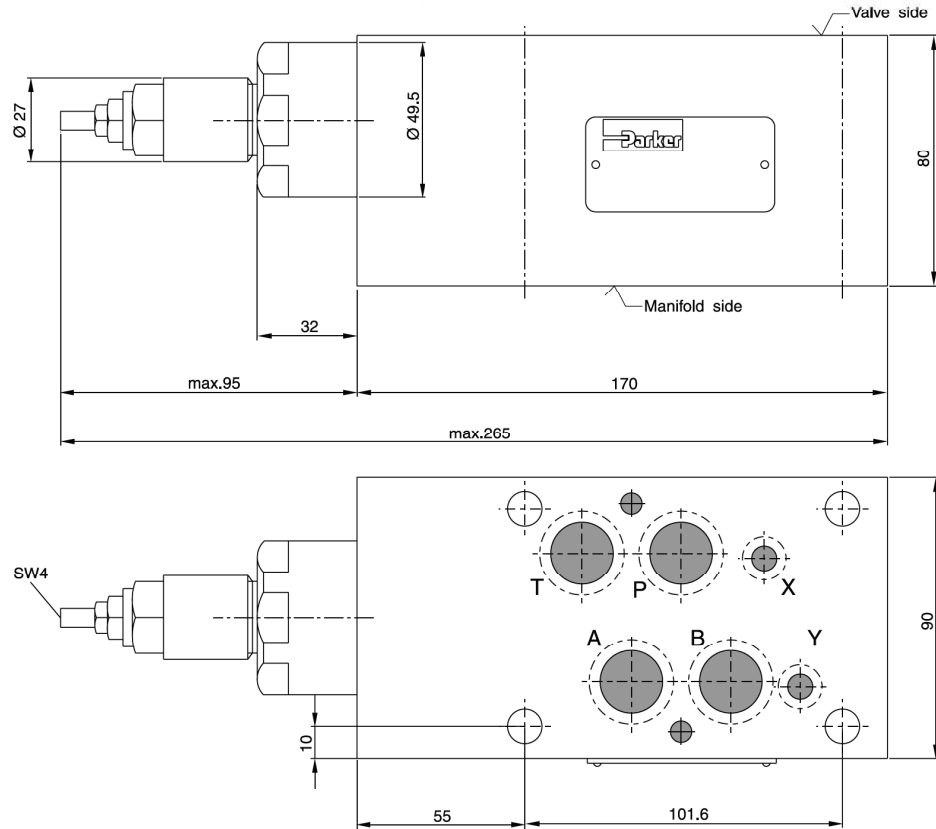
Catalogue HY11-3500/UK

Pilot Operated Pressure Relief Valve
Series RM

Dimensions

RM4

Adjustment code S



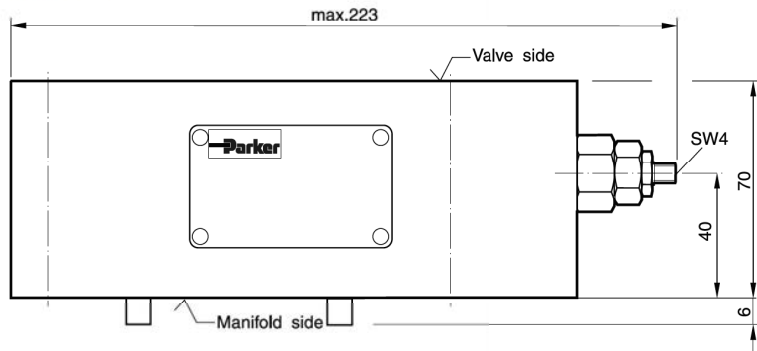
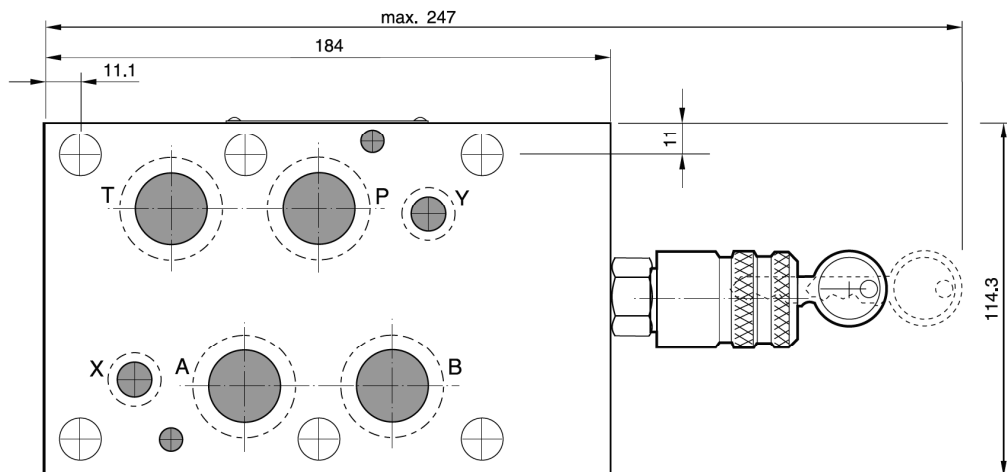
Seal kit RM4	
Seal	Order code
V	SK-RM4-V-10

Note:

The O-rings for sealing the connecting surface of the manifold side are included. The O-rings and the positioning pins are always mounted on the manifold side.

RM UK.INDD CM 07.09.11



Dimensions
RM6
Adjustment Code S

Adjustment Code L


Seal kit RM6	
Seal	Order code
V	SK-RM6-V-11

Note:

The O-rings for sealing the connecting surface of the manifold side are included. The O-rings and the positioning pins are always mounted on the manifold side.