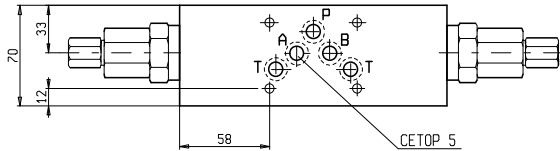
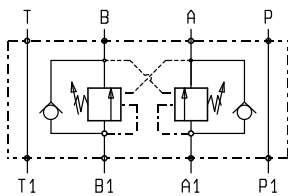
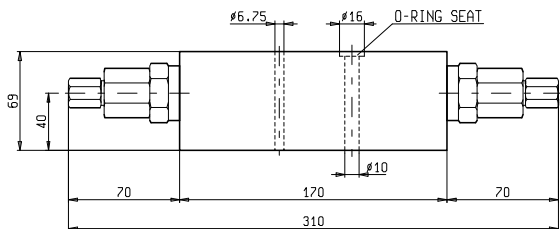

**SANDWICH VALVES
 DUAL OVERCENTRE MODULES**

EM-VBSODE-CETOP 5
OP.22.02.03.43 - Z

DESCRIPTION - OPERATION

These modules contain two single overcentre valve type VBSODE-150 (see Oil Control catalog) and can be sandwich-mounted on CETOP 5 (size 10) flanges.

FEATURES - RATINGS
Maximum Operating Pressure 250 bar
Rated Flow 80 l/min

- Weight : 3.100 Kg
- Fluids - Temperatures - Testing Conditions - Seals : see page 7.01.04
- Internal Leakage : see page 7.01.04
- Filtration : 25 µm nominal or better, see page 7.01.05
- Manifolds in high-strength aluminum for working pressures up to 250 bar.
- Special steel manifolds can be supplied upon request for working pressures up to 350 bar and for fatigue cycle applications with any working pressure.
- **IMPORTANT** : All products shown in this page are not available from stock and not included in our standard price list. Please contact our Sales Department for any information.


SPRINGS

Z	SPRINGS				
	Adj. press. Range bar	Press.Increase bar / turn	Std. Setting bar bar (Q=5 l/min)	Ordering code	Colour
20	60-210	66	200	03.51.01.152	green
35	100-350	104	350	03.51.01.142	yellow

PRESSURE DROP
