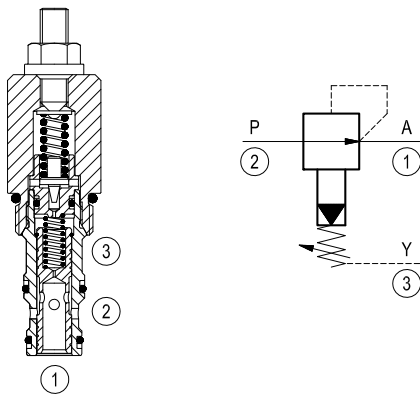


Pressure reducing, pilot operated spool type

Common cavity, Size 10

VRPP-10A

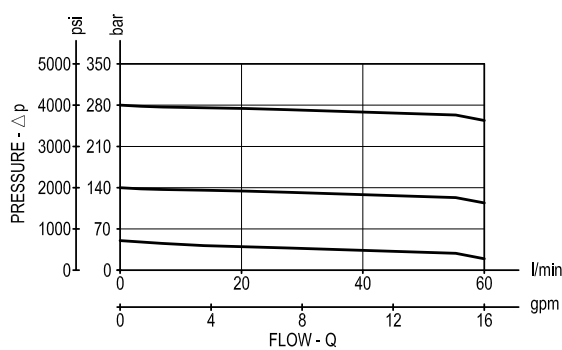
04.93.06 - X - 85 - Z



Description

Initially, flow passes freely from 2 to 1. When the pressure at 1 exceeds the pressure setting, the valve acts to restrict input flow at 2. This increases the pressure drop through the valve and maintains consistent pressure at 1. The spring chamber is drained at 3 to prevent a build-up of back-pressure against the spool.

Performance



Technical data

Max. operating pressure port 2 (P)	bar (psi)	350 (5000)
Max. pressure admitted port 1 (A)	bar (psi)	280 (4000)
Max. flow	l/min. (gpm)	60 (16)
Standard internal pilot orifice diameter	mm	0.6
Fluid temperature range	°C (°F)	-30 to 100 (-22 to 212)
Installation torque	Nm (ft-lbs)	41-47 (30-35)
Weight	kg (lbs)	0.21 (0.46)
Cavity		CA-10A-3N see data sheet RE 18325-70
Line bodies		See data sheet RE 18325-85
Seal kit (*)	code material no.	RG10A3010520100 R901111369
Fluids		Mineral-based or synthetics with lubricating properties at viscosities of 10 to 500 mm ² /s (cSt)
Filtration		Nominal value max. 10µm (NAS 8) ISO 4406 19/17/14
Installation		No restrictions
Other general technical data		See data sheet RE 18350-50

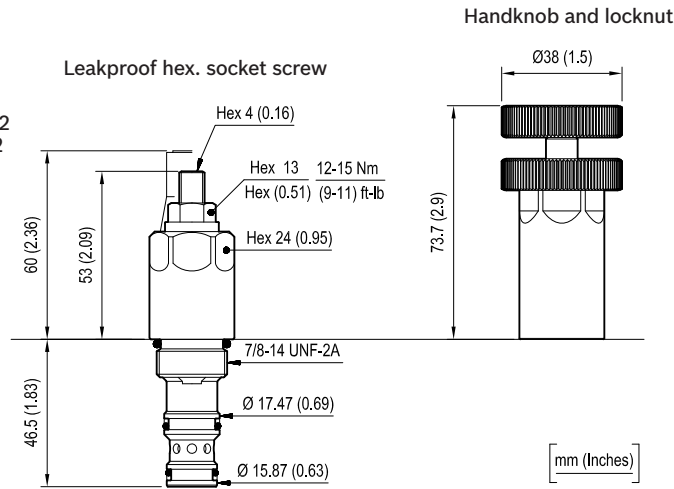
(*) Only external seals for 10 valves

Archivierung: 09/2014

Dimensions

OPTION

Tamper resistant cap
 ordering code 11.04.23.002
 Mat. no. R930000752



Ordering code

04.93.06	X	85	Z	00	*
----------	---	----	---	----	---

Relief, pilot operated spool type

Adjustments

= 03 Leakproof hex.socket screw

= 04 Handknob and locknut

Common cavity, Size 10

Series 0/A to L
 unchanged performances and dimensions

Version and options standard

		SPRINGS		
		Adj. pressure range bar (psi)	Pres. increase bar/turn (psi/turn)	Std. setting bar (psi) Q=5 l/min.
for X=03	= 10	35-140 (500-2000)	48 (696)	100 (1450)
	= 20	70-280 (1000-4000)	88 (1276)	200 (2900)
for X=04	= 35	35-350 (500-5000)	68 (986)	350 (5000)

Note: Special settings available. Contact factory authorized representative for ordering code

Type	Material number
049306038510000	R901104112
049306038520000	R901104113
049306048535000	R930005676

Type	Material number

Bosch Rexroth Oil Control S.p.A.
 Via Leonardo da Vinci 5
 P.O. Box no. 5
 41015 Nonantola – Modena, Italy
 Tel. +39 059 887 611
 Fax +39 059 547 848
 cartridges@oilcontrol.com
 www.boschrexroth.com

© This document, as well as the data, specifications and other information set forth in it, are the exclusive property of Bosch Rexroth Oil Control S.p.a.. It may not be reproduced or given to third parties without its consent.

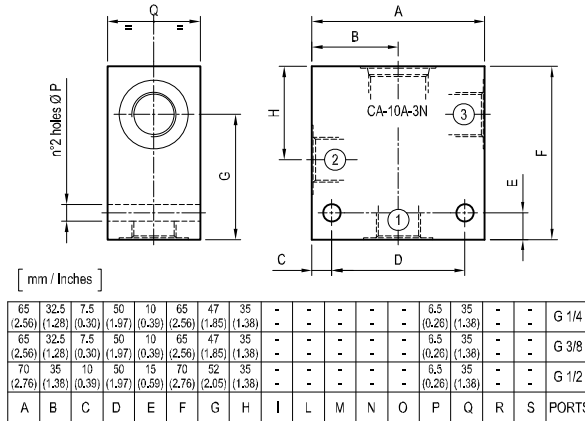
The data specified above only serve to describe the product. No statements concerning a certain condition or suitability for a certain application can be derived from our information. The information given does not release the user from the obligation of own judgment and verification. It must be remembered that our products are subject to a natural process of wear and aging.

Subject to change.

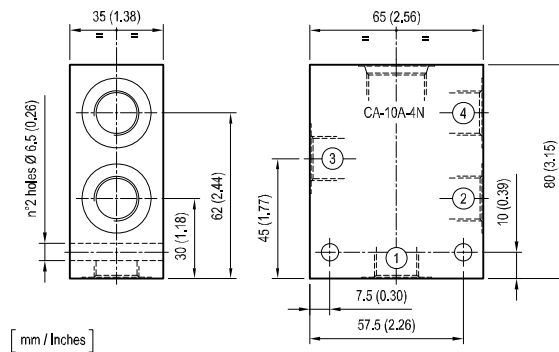
Archivierung: 09/2014

Standard manifolds - Common cavity
Size 10 - Aluminium / Steel

CAVITY: CA-10A-3N			
	Ordering code	Ports 1-2-3	Weight kg (lbs)
Aluminium	OC1009116 R901100626	G 1/4	0.35 (0.77)
	OC1009115 R901100638	G 3/8	0.34 (0.75)
	OC1009283 R934000244	G 1/2	0.38 (0.84)
Steel	OC1009226 R934000187	G 1/4	0.98 (2.16)
	OC1009227 R934000188	G 3/8	0.95 (2.09)
	OC1009284 R934000245	G 1/2	1.07 (2.36)



CAVITY: CA-10A-4N			
	Ordering code	Ports 1-2-3-4	Weight kg (lbs)
Aluminium	OC1009117 R901100734	G 1/4	0.43 (0.95)
	OC1009118 R901100747	G 3/8	0.41 (0.90)
Steel	OC1009238 R934000199	G 1/4	1.21 (2.67)
	OC1009239 R934000200	G 3/8	1.15 (2.54)



CAVITY: CA-10A-4N (Port 1 closed)			
	Ordering code	Ports 1-2-3-4	Weight kg (lbs)
Aluminium	OC1009252 R934000213	G 3/8	0.42 (0.93)
	OC1009254 R934000215	G 1/2	0.40 (0.88)
Steel	OC1009253 R934000214	G 3/8	1.18 (2.60)
	OC1009255 R934000216	G 1/2	1.12 (2.47)

