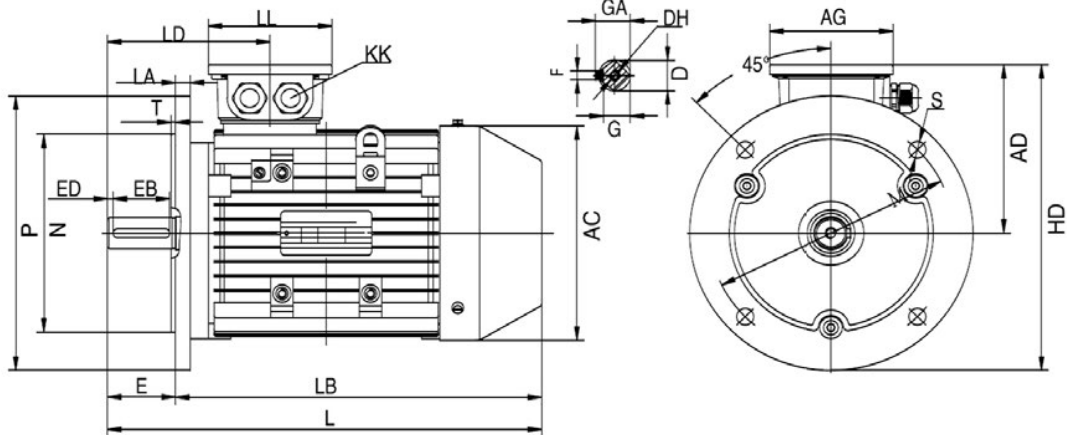




Data sheet for 3-Phase Squirrel Cage Motors

Motortype **FCA 100LB - 4 / PHE**
Premium High Efficiency

IM B5 / IM 3001



TYP	AC	AD	AG	D	DH	E	EB	ED	F	G	GA	HD	Metric	L	LA	LB	LD	LL	M	N	P	S	T
100L	198	156	109	28	M10X22	60	50	5	8	24	31	281	1-M25X1,5	398	13	338	148,5	109	215	180	250	14,5	4

Electrical datas		
Rated motor power	3,00 / 3,60	KW 50 / 60 Hz
Rated motor speed	1435	min-1 / 50 Hz
	1722	min-1 / 60 Hz
Rated motor voltage (+- 5%)	400	V Δ / 50 Hz
	690	V Y / 50 Hz
	460	V Δ / 60 Hz
	795	V Y / 60 Hz
Rated motor torque	20,0	Nm (Mn)
Rated motor current 50Hz	6,33 / 3,67	A (In)
Rated motor current 60Hz	6,61 / 3,82	A (In)
Starting motor current	7,6	x In
Starting motor torque	2,3	x Mn
Breakdown motor tor.	2,3	x Mn
Efficiency	87,7%	by 100 % Load
	87,7%	by 75 % Load
	86,0%	by 50 % Load
IE class	IE3	
Power factor at	0,78	by 100 % Load

General datas	
Frame size	100L
Type of construction	IM B5 / IM 3001
Weight	31,3 kg
Frame material	Aluminium
Protection	IP 55
Insulation	F utilized to B
Tropical insulation	no
Vibration level	A
Duty type	S1
Direction of rotation	bi-directional
Method of cooling	IC 411
Cable entries	1-M25 x1,5
Norm / Standards	IEC / DIN / ISO / VDE / EN
Execute at	IEC 60034 -1
Paintwork	RAL 7030 gray
Warranty	12 month

Mechanical datas		
Noise level	51,0	dB(A)
Moment of inertia	0,00780	Kgm ²
Bearing A - Site	6206.ZZ.C3	
Bearing B - Site	6206.ZZ.C3	
Bearing lifetime	20000 h	by max Fr + Fx
max. Radialload (Fr)	1268 N	middle of shaft
max. Axialload (Fx)	880 N	pull force
	880 N	pressure force
Locating bearing	loose	Standard

Explosion protection	
type of protection	Without

Site conditions	
Ambient temperature	- 20 bis + 40 °C
Altitude above sea level	1000 m over sea

Special configurations	
Feet removeable	
.	
.	
.	
.	
.	
.	
.	
.	
.	