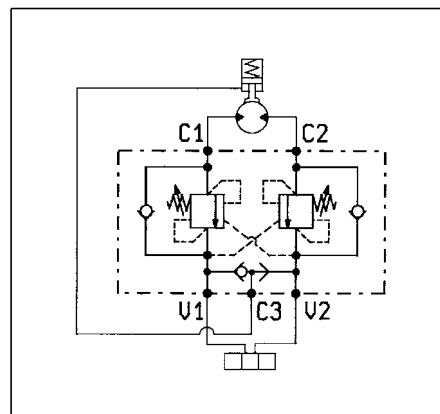
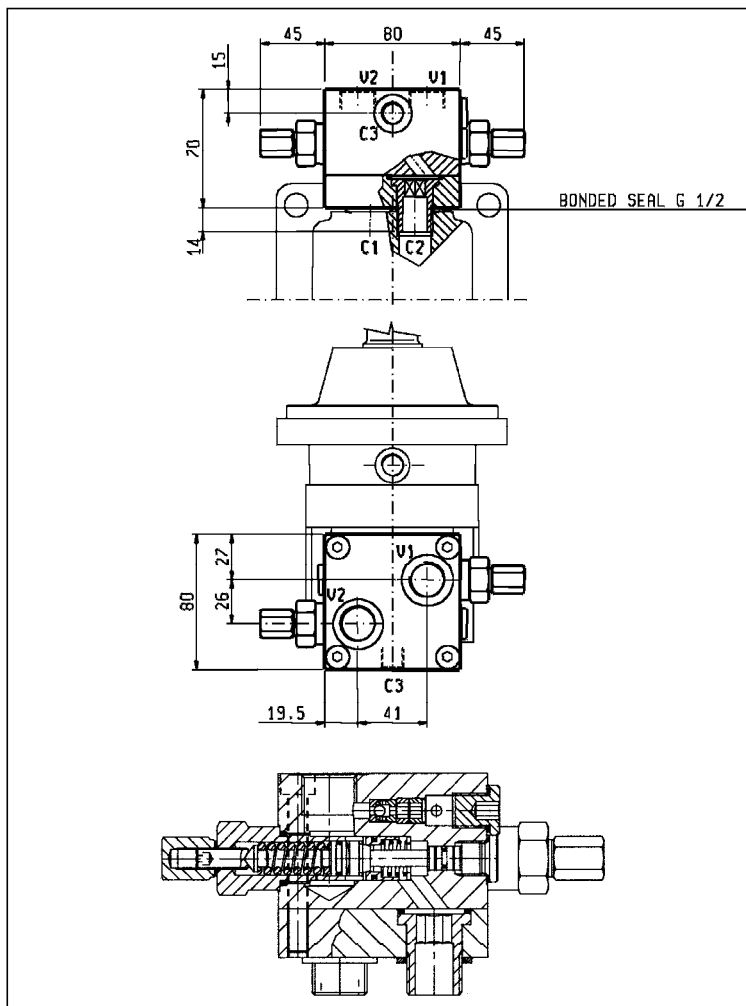


VBSO-DE-VF-30-FM

06.03.01.013

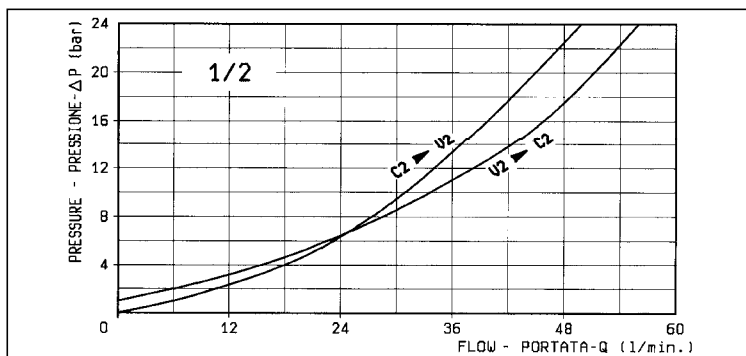


DATI TECNICI / TECHNICAL DATA

Coppia di serraggio Installation torque	110-115 Nm
Pressione max. Max. pressure	210 bar
Portata max. Flow max.	60 l/min
Peso Weight	1.9 kg
Taratura della valvola: almeno 1.3 volte superiore alla pressione indotta dal carico Pressure setting: at least 1.3 times the load induced pressure	

Flangiabili a motori Danfoss serie OMS, OMSW e OMSS.
Flangeable upon Danfoss motors series OMS, OMSW and OMSS.

Campione di una gamma di valvole progettate per la flangiatura diretta su motori idraulici. Per applicazioni diverse da questo esempio contattare OIL CONTROL.
Sample of a family of valves designed for direct flange mounting onto hydraulic motors. For applications different from this example, please consult OIL CONTROL.



RAPPORTO DI PILOTAGGIO PILOT RATIO

4.2 : 1

MOLLE / SPRINGS

Campo taratura min - max bar Adj. press. range bar	Taratura standard bar (Q = 5 l/min) Std. setting bar (made at = 5 l/min)	Cod. ordinazione Ordering code	Colore Colour
60-210	200	03.51.01.106	verde green

ATTACCHI / PORT SIZE

V1-V2-C1-C2	C3
G 1/2	G 1/4