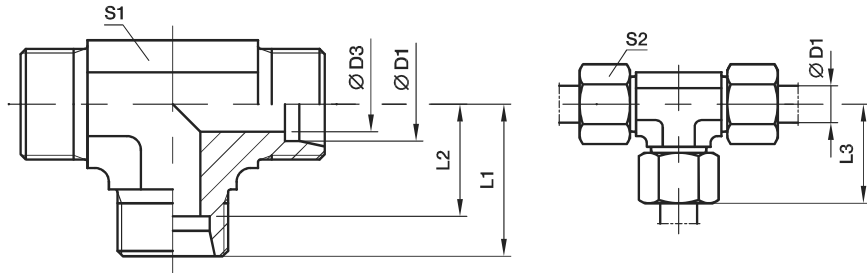


T-Stutzen

EO 24° Anschluss



| Bau- reihe | D1 ⌀ | D3 | L1 | L2 | L3 | S1 | S2 | Gewicht g/St. | Bestellzeichen* | PN (bar) ¹⁾ | | |
|------------------|---------|------|----|------|----|-----|----|------------------|-----------------|------------------------|-----|-----|
| | | | | | | | | | | CF | 71 | MS |
| LL ²⁾ | 04 | 3.0 | 15 | 11.0 | 21 | 9 | 10 | 19 | T04LL | 100 | 100 | 63 |
| | 06 | 4.5 | 15 | 9.5 | 21 | 9 | 12 | 20 | T06LL | 100 | 100 | 63 |
| | 08 | 6.0 | 17 | 11.5 | 23 | 12 | 14 | 27 | T08LL | 100 | 100 | 63 |
| | 10 | 8.0 | 18 | 12.5 | 24 | 12 | 17 | 39 | T10LL | 100 | 100 | 63 |
| | 12 | 10.0 | 21 | 15.0 | 27 | 14 | 19 | 45 | T12LL | 100 | 100 | 63 |
| L ³⁾ | 06 | 4.0 | 19 | 12.0 | 27 | 12 | 14 | 37 | T06L | 500 | 315 | 200 |
| | 08 | 6.0 | 21 | 14.0 | 29 | 12 | 17 | 53 | T08L | 500 | 315 | 200 |
| | 10 | 8.0 | 22 | 15.0 | 30 | 14 | 19 | 48 | T10L | 500 | 315 | 200 |
| | 12 | 10.0 | 24 | 17.0 | 32 | 17 | 22 | 65 | T12L | 400 | 315 | 200 |
| | 15 | 12.0 | 28 | 21.0 | 36 | 19 | 27 | 106 | T15L | 400 | 315 | 200 |
| | 18 | 15.0 | 31 | 23.5 | 40 | 24 | 32 | 179 | T18L | 400 | 315 | 200 |
| | 22 | 19.0 | 35 | 27.5 | 44 | 27 | 36 | 225 | T22L | 250 | 160 | 100 |
| | 28 | 24.0 | 38 | 30.5 | 47 | 36 | 41 | 396 | T28L | 250 | 160 | 100 |
| | 35 | 30.0 | 45 | 34.5 | 56 | 41 | 50 | 567 | T35L | 250 | 160 | 100 |
| | 42 | 36.0 | 51 | 40.0 | 63 | 50 | 60 | 905 | T42L | 250 | 160 | 100 |
| S ⁴⁾ | 06 | 4.0 | 23 | 16.0 | 31 | 12 | 17 | 68 | T06S | 800 | 630 | 400 |
| | 08 | 5.0 | 24 | 17.0 | 32 | 14 | 19 | 70 | T08S | 800 | 630 | 400 |
| | 10 | 7.0 | 25 | 17.5 | 34 | 17 | 22 | 91 | T10S | 800 | 630 | 400 |
| | 12 | 8.0 | 29 | 21.5 | 38 | 19* | 24 | 117 | T12S | 630 | 630 | 400 |
| | 16 | 12.0 | 33 | 24.5 | 43 | 24 | 30 | 202 | T16S | 630 | 400 | 250 |
| | 20 | 16.0 | 37 | 26.5 | 48 | 27 | 36 | 289 | T20S | 420 | 400 | 250 |
| | 25 | 20.0 | 42 | 30.0 | 54 | 36 | 46 | 545 | T25S | 420 | 400 | 250 |
| | 30 | 25.0 | 49 | 35.5 | 62 | 41 | 50 | 758 | T30S | 420 | 400 | 250 |
| | 38 | 32.0 | 57 | 41.0 | 72 | 50 | 60 | 1264 | T38S | 420 | 315 | 200 |

¹⁾ Druckwert genannt = Artikel lieferbar

²⁾ LL = Sehr leichte Baureihe; ³⁾ L = Leichte Baureihe; ⁴⁾ S = Schwere Baureihe

*S1 = 17 in 1.4571

$$\frac{\text{PN (bar)}}{10} = \text{PN (MPa)}$$

Lieferung ohne Mutter und Schneidring. Hinweise zum Bestellen von Komplettverschraubungen siehe Seite 17.

| Bestellzeichen-Ergänzungen | | |
|------------------------------|--|----------|
| Material | Kennbuchstaben Oberfläche und Material | Beispiel |
| Stahl, verzinkt, Cr(VI)-frei | CFX | T16SCFX |
| Edelstahl | 71X | T16S71X |
| Messing | MSX | T16SMSX |

 *Ergänzen Sie bitte die Bestellzeichen mit den **Kennbuchstaben** für das gewünschte Material.