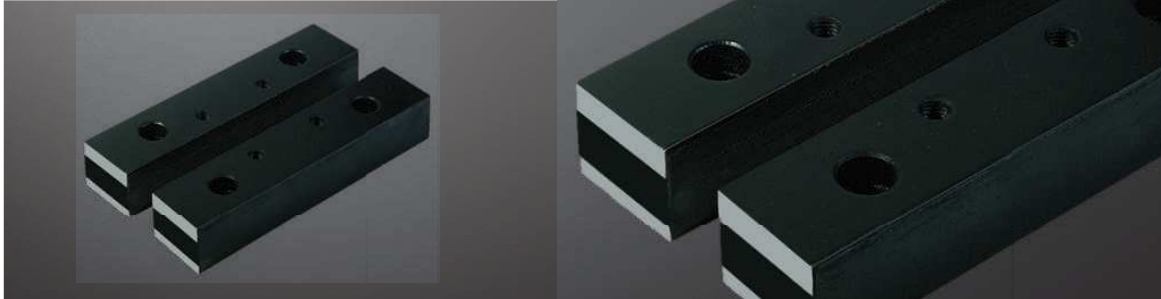
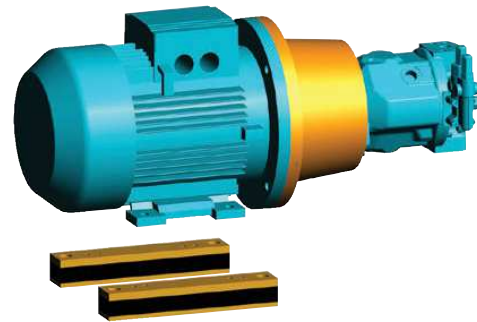
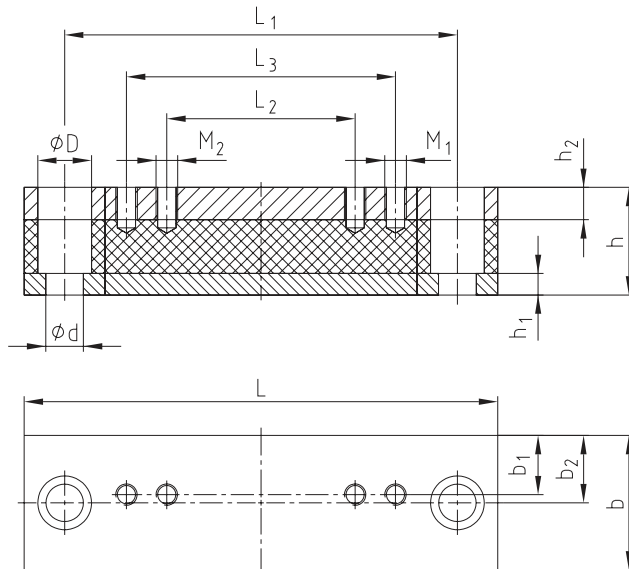


DÄMPFUNGSELEMENTE HYDRAULIK-KOMPONENTEN

Dämpfungsschienen DSM



Ausführung DSM



| Dämpfungsschienen Ausführung DSM für Elektromotoren Bauform IMB 35, Schutzart IP54 | | | | | | | | | | | | | | | |
|--|------------------------|------------------|----------------|----------------|----------------|----|----------------|----------------|-----|----------------|----------------|----|----|----------------|----------------|
| Dämpfungsschiene Größe | für Motor- baugröße | Abmessungen [mm] | | | | | | | | | | | | | |
| | | L | L ₁ | L ₂ | L ₃ | h | h ₁ | h ₂ | b | b ₁ | b ₂ | d | D | M ₁ | M ₂ |
| DSM 71 | 71 | 196 | 156 | 90 | | 40 | 8 | 12 | 50 | 21 | 25 | 14 | 20 | M6 | |
| DSM 80 | 80 | 176 | 146 | 100 | | 40 | 8 | 12 | 50 | 22 | 25 | 14 | 20 | M8 | |
| DSM 90 S | 90S | 196 | 156 | 100 | | 40 | 8 | 12 | 50 | 24,5 | 25 | 14 | 20 | M8 | |
| DSM 90 L | 90L | 240 | 205 | 125 | | 40 | 8 | 12 | 50 | 24 | 25 | 14 | 20 | M8 | |
| DSM 100 L/112 M | 100L/112M | 240 | 205 | 140 | | 40 | 8 | 12 | 50 | 22 | 25 | 14 | 20 | M10 | |
| DSM 132 S/132 M | 132S/132M | 280 | 245 | 140 | 178 | 45 | 8 | 12 | 50 | 20 | 25 | 14 | 20 | M10 | M10 |
| DSM 160 M | 160M | 340 | 300 | 210 | | 60 | 15 | 15 | 70 | 28 | 35 | 18 | 26 | M12 | |
| DSM 160 L | 160L | 416 | 370 | 254 | | 60 | 15 | 15 | 70 | 28 | 35 | 18 | 26 | M12 | |
| DSM 180 M | 180M | 416 | 370 | 241 | | 60 | 15 | 15 | 70 | 35 | 35 | 18 | 26 | M12 | |
| DSM 180 L | 180L | 446 | 400 | 279 | | 60 | 15 | 15 | 70 | 35 | 35 | 18 | 26 | M12 | |
| DSM 200 L | 200L | 492 | 430 | 305 | | 60 | 15 | 15 | 70 | 35 | 35 | 22 | 33 | M16 | |
| DSM 225 S | 225S | 492 | 430 | 286 | | 60 | 15 | 15 | 70 | 35 | 35 | 22 | 33 | M16 | |
| DSM 225 M | 225M | 492 | 445 | 311 | | 60 | 15 | 15 | 70 | 35 | 35 | 22 | 33 | M16 | |
| DSM 250 M | 250M | 492 | 445 | 349 | | 60 | 15 | 15 | 100 | 50 | 50 | 22 | 33 | M20 | |
| DSM 280 S/280 M | 280S/280M | 614 | 570 | 368 | 419 | 60 | 15 | 15 | 100 | 50 | 50 | 22 | 33 | M20 | M20 |
| DSM 315 S/315 M | 315S/315M | 614 | 570 | 406 | 457 | 60 | 15 | 15 | 120 | 60 | 60 | 22 | 33 | M24 | M24 |
| DSM 315 L | 315L | 704 | 660 | 508 | | 60 | 15 | 15 | 120 | 60 | 60 | 22 | 33 | M24 | |

Weitere Größen auf Anfrage

| | | |
|-------------------------------|------------------|-------------|
| Bestell- beispiel: | DSM | 100 L/112 M |
| | Dämpfungsschiene | Größe |