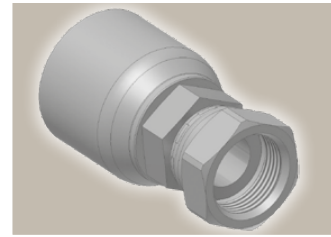
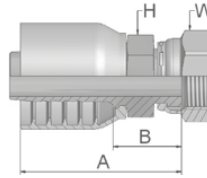
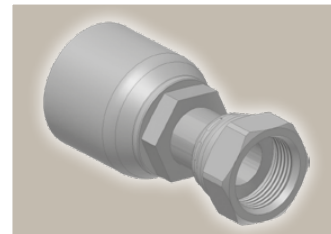
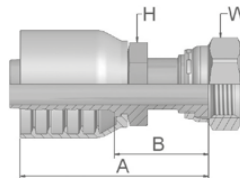


JC
**ORFS mit
Überwurfmutter**

 ISO 12151-1 – SWSA
 SAE J516 – ORFS


Bestell-Nr.	Schlauch ID				Gewinde UNF	A mm	B mm	H mm	W mm
	DN	Zoll	Size	mm					
1JC70-6-6-SM	10	3/8	-6	9,5	11/16x16	49	20	19	22
1JC70-8-6-SM	10	3/8	-6	9,5	13/16x16	51	22	19	24
1JC70-8-8-SM	12	1/2	-8	12,7	13/16x16	56	24	13/16	15/16
1JC70-10-8-SM	12	1/2	-8	12,7	1x14	58	24	24	30
1JC70-12-8-SM	12	1/2	-8	12,7	1 3/16x12	63	28	32	36
1JC70-8-10-SM	16	5/8	-10	15,9	13/16x16	58	22	24	24
1JC70-10-10-SM	16	5/8	-10	15,9	1x14	64	24	24	30
1JC70-12-10-SM	16	5/8	-10	15,9	1 3/16x12	68	29	32	36
1JC70-8-12-SM	19	3/4	-12	19,1	13/16x16	61	22	27	24
1JC70-12-12-SM	19	3/4	-12	19,1	1 3/16x12	68	29	32	36
1JC70-16-12-SM	19	3/4	-12	19,1	1 7/16x12	72	33	36	41
1JC70-12-16-SM	25	1	-16	25,4	13/16x12	76	31	36	36
1JC70-16-16-SM	25	1	-16	25,4	1 7/16x12	80	35	36	41
1JC70-20-16-SM	25	1	-16	25,4	1 11/16x12	80	33	41	50

JS
**ORFS mit
Überwurfmutter
lange Ausführung**

 ISO 12151-1-SWSB
 SAE J516 – ORFS


Bestell-Nr.	Schlauch ID				Gewinde UNF	A mm	B mm	H mm	W mm
	DN	Zoll	Size	mm					
1JS70-6-6-SM	10	3/8	-6	9,5	11/16x16	58	29	17	22
1JS70-8-6-SM	10	3/8	-6	9,5	13/16x16	64	35	19	24
1JS70-8-8-SM	12	1/2	-8	12,7	13/16x16	67	33	22	24
1JS70-10-8-SM	12	1/2	-8	12,7	1x14	73,5	38,5	24	30
1JS70-10-10-SM	16	5/8	-10	15,9	1x14	79	39	24	30
1JS70-12-12-SM	19	3/4	-12	19,1	1 3/16x12	84	45	30	36
1JS70-16-12-SM	19	3/4	-12	19,1	1 7/16x12	86	47	36	41
1JS70-16-16-SM	25	1	-16	25,4	1 7/16x12	98	53	36	41
1JS70-20-16-SM	25	1	-16	25,4	1 11/16x12	94	47	41	50

Serie 70

 Geprüfte **Armaturenserie** für Schlauchtypen, je nach size:

70 371LT 372 372RH 372TC 701 701 TC F42-8


Db-15

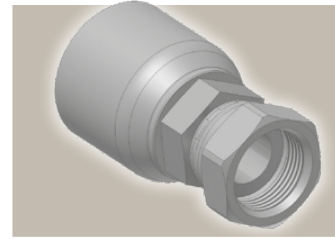
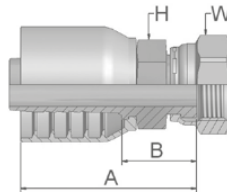
Katalog 4400/DE

Archivierung: 02/2021

Hochdruck
ORFS

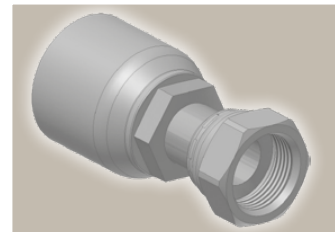
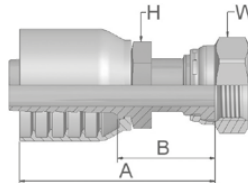
 Parkrimp No-Skive Armaturen
Serie 73

JC ORFS mit Überwurfmutter

 ISO 12151-1 – SWSA
SAE J516 – ORFS


Bestell-Nr.	Schlauch ID				Gewinde UNF	A mm	B mm	H mm	W mm
	DN	Zoll	Size	mm					
1JC73-12-12-SM	19	3/4	-12	19,1	1 3/16x12	81	33	30	36
1JC73-16-16-SM	25	1	-16	25,4	1 7/16x12	89	38	36	41
1JC73-20-20-SM	31	1 1/4	-20	31,8	1 11/16x12	106	42	46	50
1JC73-24-24-SM	38	1 1/2	-24	38,1	2x12	117	44	50	60

JS ORFS mit Überwurfmutter lange Ausführung

 ISO 12151-1-SWSB
SAE J516 – ORFS


Bestell-Nr.	Schlauch ID				Gewinde UNF	A mm	B mm	H mm Zoll	W mm Zoll
	DN	Zoll	Size	mm					
1JS73-12-12-SM	19	3/4	-12	19,1	1 3/16x12	94	46	30	36
1JS73-16-12-SM	19	3/4	-12	19,1	1 7/16x12	107	58	36	41
1JS73-16-16-SM	25	1	-16	25,4	1 7/16x12	103	52	36	41
1JS73-20-16-SM	25	1	-16	25,4	1 11/16x12	114	64	41	50
1JS73-20-20-SM	31	1 1/4	-20	31,8	1 11/16x12	117	54	46	50
1JS73-24-24-SM	38	1 1/2	-24	38,1	2x12	120	57	50	60

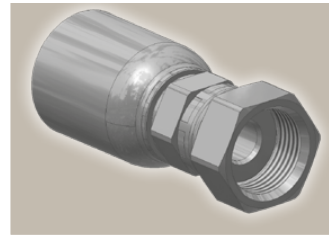
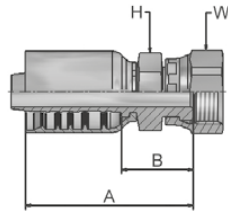
 Geprüfte **Armaturenserie** für Schlauchtypen:

73 731 731TC SX35 SX35LT SX35TC SX42 SX42LT SX42TC

Hochdruck
 ORFS

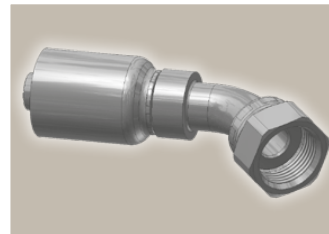
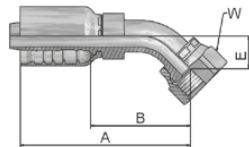
 Parkrimp No-Skive Armaturen
 Serie 77

JC ORFS mit Überwurfmutter

 ISO 12151-1 – SWSA
 SAE J516 – ORFS


Bestell-Nr.	Schlauch ID				Gewinde UNF	A mm	B mm	H mm	W mm
	DN	Zoll	Size	mm					
1JC77-8-8	12	1/2	-8	12,7	13/16x16	60	25	22	24
1JC77-10-8	12	1/2	-8	12,7	1x14	65	31	24	30
1JC77-12-8	12	1/2	-8	12,7	1 3/16x12	64	29	30	36
1JC77-10-10	16	5/8	-10	15,9	1x14	70	31	24	30
1JC77-12-10	16	5/8	-10	15,9	1 3/16x16	69	30	30	36
1JC77-10-12	19	3/4	-12	19,1	1x14	79	33	30	30
1JC77-12-12	19	3/4	-12	19,1	1 3/16x12	79	33	30	36
1JC77-16-12	19	3/4	-12	19,1	1 7/16x12	81	35,3	36	41
1JC77-12-16	25	1	-16	25,4	1 3/16x12	92	38	36	36
1JC77-16-16	25	1	-16	25,4	1 7/16x12	91	37,1	36	41
1JC77-20-16	25	1	-16	25,4	1 11/16x12	90	36	41	50
1JC77-20-20	31	1 1/4	-20	31,8	1 11/16x12	107	44	46	50
1JC77-24-24	38	1 1/2	-24	38,1	2x12	109	43	50	60
1JC77-32-32	51	2	-32	50,8	2 1/2x12	143	66	65	75

J7 ORFS mit Überwurfmutter 45° Bogen

 ISO 12151-1 – SWE 45°
 SAE J516 – ORFS 45°


Bestell-Nr.	Schlauch ID				Gewinde UNF	A mm	B mm	E mm	W mm
	DN	Zoll	Size	mm					
1J777-8-8	12	1/2	-8	12,7	13/16x16	72,7	38	15	24
1J777-10-10	16	5/8	-10	15,9	1x14	86	47	16	30
1J777-12-10	16	5/8	-10	15,9	1 3/16x12	98	59	21	36
1J777-12-12	19	3/4	-12	19,1	1 3/16x12	111	65	21	36
1J777-16-12	19	3/4	-12	19,1	1 7/16x12	114	68	24	41
1J777-16-16	25	1	-16	25,4	1 7/16x12	133	79	24	41
1J777-20-20	31	1 1/4	-20	31,8	1 11/16x12	145	81	25	50
1J777-24-20	31	1 1/4	-20	31,8	2x12	148	84	27	60
1J777-24-24	38	1 1/2	-24	38,1	2x12	176	109	42	60

 Geprüfte **Armaturenserie** für Schlauchtypen, je nach size:

77	387	387ST	387TC	487	487ST	487TC	787	787TC	787ST	797	797TC	797ST	797RH	SX42 ...
	SX42LT		SX42TC											



Dd-21

Katalog 4400/DE

Archivierung: 02/2021

Serie 77