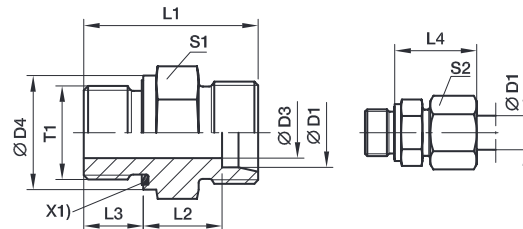



DIN fittings
GE-R-ED Male stud connector

Male BSPP thread – ED-seal (ISO 1179) / EO 24° cone end



X1) Eolastic-sealing ED

Series	D1	T1	D3	D4	L1	L2	L3	L4	S1	S2	Weight g/1 piece	Order code*	PN (bar) ¹⁾			
													CF	A3C	71	MS
LL ²⁾	04	G1/8A	3	14	20.0	9.5	6.5	19	14	10	10	GE04LLREDOMD	100	100	100	63
	06	G1/8A	4	14	20.0	8.0	6.5	20	14	12	11	GE06LLREDOMD	100	100	100	63
L ³⁾	06	G1/8A	4	14	23.5	8.5	8.0	23	14	14	13	GE06LREDOMD	500	315	315	200
	06	G1/4A	4	19	29.0	10.0	12.0	25	19	14	28	GE06LR1/4EDOMD	500	315	315	200
	06	G3/8A	4	22	30.5	11.5	12.0	26	22	14	44	GE06LR3/8EDOMD	400	315	315	200
	06	G1/2A	4	27	33.0	12.0	14.0	27	27	14	61	GE06LR1/2EDOMD	400	315	315	200
	08	G1/4A	6	19	29.0	10.0	12.0	25	19	17	27	GE08LREDOMD	500	315	315	200
	08	G1/8A	4	14	24.5	9.5	8.0	24	14	17	16	GE08LR1/8EDOMD	500	315	315	200
	08	G3/8A	6	22	30.5	11.5	12.0	26	22	17	45	GE08LR3/8EDOMD	400	315	315	200
	08	G1/2A	6	27	33.0	12.0	14.0	27	27	17	74	GE08LR1/2EDOMD	400	315	315	200
	10	G1/4A	6	19	30.0	11.0	12.0	26	19	19	29	GE10LREDOMD	500	315	315	200
	10	G1/8A	4	14	25.5	10.5	8.0	25	17	19	21	GE10LR1/8EDOMD	500	315	315	200
	10	G3/8A	8	22	31.5	12.5	12.0	27	22	19	43	GE10LR3/8EDOMD	400	315	315	200
	10	G1/2A	8	27	34.0	13.0	14.0	28	27	19	71	GE10LR1/2EDOMD	400	315	315	200
	12	G3/8A	9	22	31.5	12.5	12.0	27	22	22	41	GE12LREDOMD	400	315	315	200
	12	G1/8A	4	14	26.5	11.5	8.0	26	19	22	26	GE12LR1/8EDOMD	315	315	315	200
	12	G1/4A	6	19	31.0	12.0	12.0	27	19	22	31	GE12LR1/4EDOMD	400	315	315	200
	12	G1/2A	10	27	34.0	13.0	14.0	28	27	22	67	GE12LR1/2EDOMD	400	315	315	200
	12	G3/4A	10	32	37.0	14.0	16.0	29	32	22	118	GE12LR3/4EDOMD	250	160	160	100
	15	G1/2A	11	27	35.0	14.0	14.0	29	27	27	72	GE15LREDOMD	400	315	315	200
	15	G3/8A	9	22	32.5	13.5	12.0	29	24	27	54	GE15LR3/8EDOMD	400	315	315	200
	15	G3/4A	12	32	38.0	15.0	16.0	30	32	27	116	GE15LR3/4EDOMD	250	160	160	100
	18	G1/2A	14	27	36.0	14.5	14.0	31	27	32	71	GE18LREDOMD	400	315	315	200
	18	G3/8A	9	22	33.5	14.0	12.0	30	27	32	66	GE18LR3/8EDOMD	400	315	315	200
	18	G3/4A	15	32	38.0	14.5	16.0	31	32	32	110	GE18LR3/4EDOMD	250	160	160	100
	22	G3/4A	18	32	40.0	16.5	16.0	33	32	36	102	GE22LREDOMD	250	160	160	100
	22	G1/2A	14	27	38.0	16.5	14.0	33	32	36	91	GE22LR1/2EDOMD	250	160	160	100
	22	G1A	19	40	43.0	17.5	18.0	34	41	36	189	GE22LR1EDOMD	250	160	160	100
	28	G1A	23	40	43.0	17.5	18.0	34	41	41	170	GE28LREDOMD	250	160	160	100
	28	G3/4A	18	32	41.0	17.5	16.0	34	41	41	159	GE28LR3/4EDOMD	250	160	160	100
	28	G11/4A	24	50	46.0	18.5	20.0	35	50	41	316	GE28LR11/4EDOMD	250	160	160	100
	35	G11/4A	30	50	48.0	17.5	20.0	39	50	50	272	GE35LREDOMD	250	160	160	100
	35	G1A	23	40	46.0	17.5	18.0	39	46	50	226	GE35LR1EDOMD	250	160	160	100
	35	G11/2A	30	55	52.0	19.5	22.0	41	55	50	423	GE35LR11/2EDOMD	250	160	160	100
	42	G11/2A	36	55	52.0	19.0	22.0	42	55	60	343	GE42LREDOMD	250	160	160	100
	42	G1A	23	40	48.0	19.0	18.0	42	55	60	324	GE42LR1EDOMD	250	160	160	100
	42	G11/4A	30	50	50.0	19.0	20.0	42	55	60	348	GE42LR11/4EDOMD	250	160	160	100

¹⁾ Pressure shown = item deliverable

²⁾ LL = very light series; ³⁾ L = light series

 PN (bar) = PN (MPa)
 10

Delivery without nut and ring. Information on ordering complete fittings or alternative sealing materials see page 17.

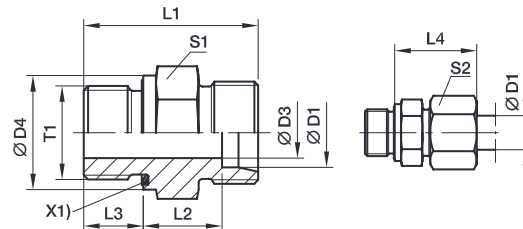
*Please add the suffixes below according to the material/surface required.

Order code suffixes			
Material	Suffix surface and material	Example	Standard sealing material (no additional suffix needed)
Steel, zinc plated, chrome ⁶ -free	CF	GE18LREDOMDCF	NBR
Stahl, zinc yellow plated	A3C	GE18LREDOMDA3C	NBR
Stainless Steel	71	GE18LREDOMD71	VIT
Brass	MS	GE18LREDOMDMS	NBR




DIN fittings
GE-R-ED Male stud connector

Male BSPP thread – ED-seal (ISO 1179) / EO 24° cone end



X1) Eolastic-sealing ED

Series	D1	T1	D3	D4	L1	L2	L3	L4	S1	S2	Weight g/1 piece	Order code*	PN (bar) ¹⁾			
													CF	A3C	71	MS
S ²⁾	06	G1/4A	4	19	32.0	13.0	12	28	19	17	35	GE06SREDOMD	800	630	630	400
	06	G1/8A	4	14	27.5	12.5	8	27	14	17	21	GE06SR1/8EDOMD	315	315	315	
	06	G3/8A	4	22	34.5	15.5	12	30	22	17	52	GE06SR3/8EDOMD	630	630	630	
	06	G1/2A	4	27	39.0	18.0	14	33	27	17	83	GE06SR1/2EDOMD	630	630	630	
	08	G1/4A	5	19	34.0	15.0	12	30	19	19	41	GE08SREDOMD	800	630	630	400
	08	G3/8A	5	22	34.5	15.5	12	30	22	19	57	GE08SR3/8EDOMD	800	630	630	
	08	G1/2A	5	27	39.0	18.0	14	33	27	19	89	GE08SR1/2EDOMD	630	400	400	
	10	G3/8A	7	22	34.5	15.0	12	31	22	22	55	GE10SREDOMD	800	630	630	400
	10	G1/4A	5	19	34.0	14.5	12	31	19	22	42	GE10SR1/4EDOMD	800	630	630	
	10	G1/2A	7	27	39.0	17.5	14	34	27	22	97	GE10SR1/2EDOMD	630	630	630	
	12	G3/8A	8	22	36.5	17.0	12	33	22	24	62	GE12SREDOMD	630	630	630	400
	12	G1/4A	5	19	36.0	16.5	12	33	22	24	61	GE12SR1/4EDOMD	630	630	630	
	12	G1/2A	8	27	39.0	17.5	14	34	27	24	99	GE12SR1/2EDOMD	630	630	630	
	14	G1/2A	10	27	41.0	19.0	14	37	27	27	96	GE14SREDOMD	630	630	630	400
	14	G3/8A	8	22	38.5	18.5	12	36	24	27	74	GE14SR3/8EDOMD	630	630	630	
	14	G3/4A	10	32	45.0	21.0	16	39	32	27	138	GE14SR3/4EDOMD	400	400	400	
	16	G1/2A	12	27	41.0	18.5	14	37	27	30	91	GE16SREDOMD	630	400	400	250
	16	G3/8A	8	22	38.5	18.0	12	36	27	30	83	GE16SR3/8EDOMD	630	400	400	
	16	G3/4A	12	32	45.0	20.5	16	39	32	30	152	GE16SR3/4EDOMD	420	400	400	
	20	G3/4A	16	32	47.0	20.5	16	42	32	36	149	GE20SREDOMD	420	400	400	250
	20	G1/2A	12	27	45.0	20.5	14	42	32	36	142	GE20SR1/2EDOMD	420	400	400	
	20	G1A	16	40	51.0	22.5	18	44	41	36	265	GE20SR1EDOMD	420	400	400	
	20	G11/4A	16	50	53.0	22.5	20	44	50	36	404	GE20SR11/4EDOMD	400	400	400	
	25	G1A	20	40	53.0	23.0	18	47	41	46	266	GE25SREDOMD	420	400	400	250
	25	G1/2A	12	27	49.0	23.0	14	47	41	46	228	GE25SR1/2EDOMD	420	400	400	
	25	G3/4A	16	32	51.0	23.0	16	47	41	46	255	GE25SR3/4EDOMD	420	400	400	
	25	G11/4A	20	50	55.0	23.0	20	47	50	46	411	GE25SR11/4EDOMD	400	400	400	
	25	G11/2A	20	55	60.0	26.0	22	50	55	46	549	GE25SR11/2EDOMD	315	315	315	
	30	G11/4A	25	50	57.0	23.5	20	50	50	50	418	GE30SREDOMD	420	400	400	250
	30	G1A	20	40	55.0	23.5	18	50	46	50	344	GE30SR1EDOMD	420	400	400	
	30	G11/2A	25	55	62.0	26.5	22	53	55	50	530	GE30SR11/2EDOMD	315	315	315	200
	38	G11/2A	32	55	64.0	26.0	22	57	55	60	563	GE38SREDOMD	420	315	315	
	38	G11/4A	25	50	62.0	26.0	20	57	55	60	575	GE38SR11/4EDOMD	420	315	315	

¹⁾ Pressure shown = item deliverable

²⁾ S = heavy series

$$\frac{\text{PN (bar)}}{10} = \text{PN (MPa)}$$

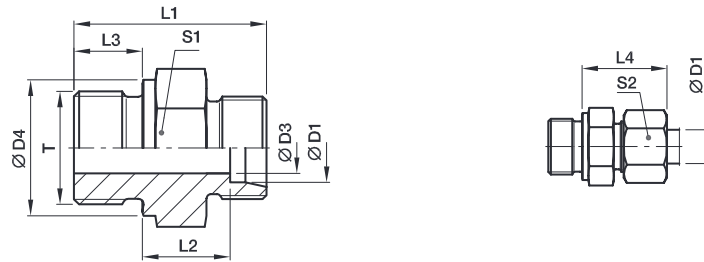
Delivery without nut and ring. Information on ordering complete fittings or alternative sealing materials see page 17.

*Please add the suffixes below according to the material/surface required.

Order code suffixes			
Material	Suffix surface and material	Example	Standard sealing material (no additional suffix needed)
Steel, zinc plated, chrome ⁶ -free	CF	GE16SREDOMDCF	NBR
Stahl, zinc yellow plated	A3C	GE16SREDOMDA3C	NBR
Stainless Steel	71	GE16SREDOMD71	VIT
Brass	MS	GE16SREDOMDMS	NBR


DIN fittings
GE-R Male stud connector

Male BSPP thread – metal sealing edge (ISO 1179) / EO 24° cone end



Series	D1	T	D3	D4	L1	L2	L3	L4	S1	S2	Weight g/1 piece	Order code*	PN (bar) ¹⁾			
													CF	A3C	71	MS
L ³⁾	06	G1/8A	4	14	23,5	8,5	8	23,0	14	14	14	GE06LR	315	315	315	200
	06	G1/4A	4	18	29,0	10,0	12	25,0	19	14	60	GE06LR1/4	315	315	315	200
	06	G3/8A	4	22	30,5	11,5	12	26,0	22	14	45	GE06LR3/8	315	315	315	200
	06	G1/2A	4	26	33,0	12,0	14	27,0	27	14	60	GE06LR1/2	315	315	315	200
	08	G1/4A	6	18	29,0	10,0	12	25,0	19	17	26	GE08LR	315	315	315	200
	08	G1/8A	4	14	24,5	8,5	8	23,0	14	17	16	GE08LR1/8	315	315	315	200
	08	G3/8A	6	22	30,5	11,5	12	26,0	22	17	44	GE08LR3/8	315	315	315	200
	08	G1/2A	6	26	33,0	12,0	14	27,0	27	17	74	GE08LR1/2	315	315	315	200
	10	G1/4A	6	18	30,0	11,0	12	26,0	19	19	31	GE10LR	315	315	315	200
	10	G1/8A	4	14	25,5	10,5	8	25,0	17	19	21	GE10LR1/8	315	315	315	200
	10	G3/8A	8	22	31,5	12,5	12	27,0	22	19	44	GE10LR3/8	315	315	315	200
	10	G1/2A	8	26	34,0	13,0	14	28,0	27	19	72	GE10LR1/2	315	315	315	200
12	G3/8A	9	22	31,5	12,5	12	27,0	22	22	43	GE12LR	315	315	315	200	
12	G1/8A	4	14	26,5	11,5	8	26,0	19	22	27	GE12LR1/8	315	315	315	200	
12	G1/4A	6	18	31,0	12,0	12	27,0	19	22	32	GE12LR1/4	315	315	315	200	
12	G1/2A	10	26	34,0	13,0	14	28,0	27	22	67	GE12LR1/2	315	315	315	200	
12	G3/4A	10	32	37,0	14,0	16	29,0	32	22	120	GE12LR3/4	315	315	315	200	
15	G1/2A	11	26	35,0	14,0	14	29,0	27	27	72	GE15LR	250	250	250	160	
15	G3/8A	9	22	32,5	13,5	12	29,0	24	27	56	GE15LR3/8	250	250	250	160	
15	G3/4A	12	32	38,0	15,0	16	30,0	32	27	118	GE15LR3/4	250	250	250	160	
18	G1/2A	14	26	36,0	14,5	14	31,0	27	32	72	GE18LR	250	250	250	160	
18	G3/8A	9	22	33,5	14,0	12	29,5	27	32	69	GE18LR3/8	250	250	250	160	
18	G3/4A	15	32	38,0	14,5	16	30,0	32	32	112	GE18LR3/4	250	250	250	160	
22	G3/4A	18	32	40,0	16,5	16	33,0	32	36	103	GE22LR	160	160	160	100	
22	G1/2A	14	26	38,0	16,5	14	33,0	32	36	91	GE22LR1/2	160	160	160	100	
22	G1A	19	39	43,0	17,5	18	33,5	41	36	184	GE22LR1	160	160	160	100	
28	G1A	23	39	43,0	17,5	18	34,0	41	41	168	GE28LR	160	160	160	100	
28	G1/2A	14	26	39,0	17,5	14	34,0	41	41	141	GE28LR1/2	160	160	160	100	
28	G3/4A	18	32	41,0	17,5	16	34,0	41	41	156	GE28LR3/4	160	160	16	100	
28	G11/4A	24	50	46,0	18,3	20	35,0	50	41	314	GE28LR11/4	160	160	160	100	
35	G11/4A	30	49	48,0	17,5	20	39,0	50	50	276	GE35LR	160	160	160	100	
35	G1/2A	14	26	42,0	17,5	14	39,0	46	50	194	GE35LR1/2	160	160	160	100	
35	G3/4A	18	32	44,0	17,5	16	39,0	46	50	202	GE35LR3/4	160	160	160	100	
35	G1A	23	39	46,0	17,5	18	39,0	46	50	234	GE35LR1	160	160	160	100	
35	G11/2A	30	55	52,0	19,5	22	41,0	55	50	355	GE35LR11/2	160	160	160	100	
42	G11/2A	36	55	52,0	19,0	22	42,0	55	60	349	GE42LR	160	160	160	100	
42	G1A	23	39	48,0	19,0	18	42,0	55	60	327	GE42LR1	160	160	160	100	
42	G11/4A	30	49	50,0	19,0	20	42,0	55	60	336	GE42LR11/4	160	160	160	100	

¹⁾ Pressure shown = item deliverable

³⁾ L = light series

$$\frac{\text{PN (bar)}}{10} = \text{PN (MPa)}$$

Delivery without nut and ring. Information on ordering complete fittings see page 17.

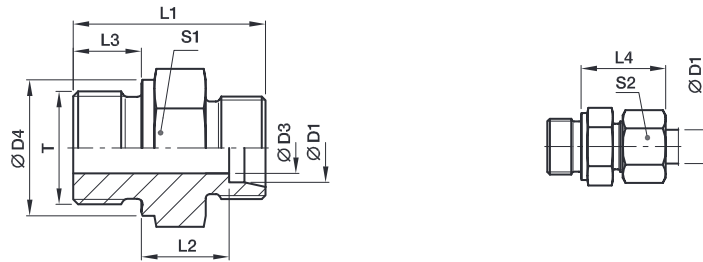
*Please add the suffixes below according to the material/surface required.

Order code suffixes		
Material	Suffix surface and material	Example
Steel, zinc plated, chrome ⁶ -free	CFX	GE18LRFCX
Steel, zinc yellow plated	A3CX	GE18LRA3CX
Stainless Steel	71X	GE18LR71X
Brass	MSX	GE18LRMSX




DIN fittings
GE-R Male stud connector

Male BSPP thread – metal sealing edge (ISO 1179) / EO 24° cone end



Series	D1	T	D3	D4	L1	L2	L3	L4	S1	S2	Weight g/1 piece	Order code*	PN (bar) ¹⁾			
													CF	A3C	71	MS
S ⁴⁾	06	G1/4A	4	18	32.0	13.0	12	28	19	17	35	GE06SR	400	400	400	250
	06	G1/8A	3	14	27.5	12.5	8	27	14	17	22	GE06SR1/8	400	400	400	
	06	G3/8A	4	22	34.5	15.5	12	30	22	17	57	GE06SR3/8	400	400	400	
	06	G1/2A	4	26	39.0	18.0	14	33	27	17	83	GE06SR1/2	400	400	400	
	08	G1/4A	5	18	34.0	15.0	12	30	19	19	41	GE08SR	400	400	400	250
	08	G3/8A	5	22	34.5	15.5	12	30	22	19	59	GE08SR3/8	400	400	400	
	08	G1/2A	5	26	39.0	18.0	14	33	27	19	100	GE08SR1/2	400	400	400	
	10	G3/8A	7	22	34.5	15.0	12	31	22	22	56	GE10SR	400	400	400	250
	10	G1/4A	5	18	34.0	14.5	12	31	19	22	43	GE10SR1/4	400	400	400	
	10	G1/2A	7	26	39.0	17.5	14	34	27	22	97	GE10SR1/2	400	400	400	
	12	G3/8A	8	22	36.5	17.0	12	33	22	24	62	GE12SR	400	400	400	250
	12	G1/4A	5	18	36.0	16.5	12	33	22	24	57	GE12SR1/4	400	400	400	
	12	G1/2A	8	26	39.0	17.5	14	34	27	24	57	GE12SR1/2	400	400	400	
	14	G1/2A	10	26	41.0	19.0	14	37	27	27	96	GE14SR	400	400	400	250
	14	G3/8A	8	22	38.5	18.5	12	36	24	27	74	GE14SR3/8	400	400	400	
	16	G1/2A	12	26	41.0	18.5	14	37	27	30	92	GE16SR	400	400	400	250
	16	G3/8A	8	22	38.5	18.0	12	36	27	30	83	GE16SR3/8	400	400	400	
	16	G3/4A	12	32	45.0	20.5	16	39	32	30	157	GE16SR3/4	400	400	400	
	20	G3/4A	16	32	47.0	20.5	16	42	32	36	151	GE20SR	400	400	400	250
	20	G1/2A	12	26	45.0	20.5	14	42	32	36	142	GE20SR1/2	400	400	400	
20	G1A	16	39	51.0	22.5	18	44	41	36	273	GE20SR1	250	250	250		
20	G11/4A	16	49	53.0	22.5	20	44	50	36	387	GE20SR11/4	160	160	160		
25	G1A	20	39	53.0	23.0	18	47	41	46	267	GE25SR	250	250	250	160	
25	G3/4A	16	32	51.0	23.0	16	47	41	46	245	GE25SR3/4	250	250	250		
25	G11/4A	20	49	55.0	23.0	20	47	50	46	422	GE25SR11/4	160	160	160		
30	G11/4A	25	49	57.0	23.5	20	50	50	50	422	GE30SR	160	160	160	100	
30	G1A	20	39	55.0	23.5	18	50	46	50	337	GE30SR1	160	160	160		
38	G11/2A	32	55	64.0	26.0	22	57	55	60	560	GE38SR	160	160	160	100	
38	G11/4A	25	49	62.0	26.0	20	57	55	60	578	GE38SR11/4	160	160	160		

¹⁾ Pressure shown = item deliverable

⁴⁾ S = heavy series

$$\frac{\text{PN (bar)}}{10} = \text{PN (MPa)}$$

Delivery without nut and ring. Information on ordering complete fittings see page I7.

 *Please add the **suffixes** below according to the material/surface required.

Order code suffixes		
Material	Suffix surface and material	Example
Steel, zinc plated, chrome ⁶ -free	CFX	GE16SRCFX
Steel, zinc yellow plated	A3CX	GE16SRA3CX
Stainless Steel	71X	GE16SR71X
Brass	MSX	GE16SRMSX

