

Test Couplings



Test Coupling with Ball Check
SMK-20

A





Test Coupling with Ball Check SMK-20

A



Fast Coupling for

- Monitoring and control of pressure
- Venting
- Sampling in high- and low-pressure systems
- Connection Thread according to ISO 15171-2

Advantages

- Test system at working pressure
- Leak proof connection before **Ball Check** is open
- Simple connection to measurement, control and switching devices
- Self locking metal protective cap

Working Pressure

- Max. working pressure 630 bar / 9137 PSI
For SMK Type G and K the recommended working pressure of fitting manufacturer should be noted.
- Connection under pressure up to 400 bar / 5801 PSI max.

Materials

- **Metal Parts:**
Standard material: Steel, zinc/nickel-plated = **W3**
Optional:
Stainless Steel **W4** (1.4305 / AISI 303) on request
Stainless Steel **W5** (1.4571 / AISI 316Ti) on request
- **Ball:** Stainless Steel

• Seal Types:

B = NBR (Buna-N®)

(Temperature range -20 °C ... +100 °C / -4 °F ... +212 °F)

Note: Internal Seal Types made of FKM, even for standard NBR-type.

V = FKM (Viton®)*

(Temperature range -20 °C ... +200 °C / -4 °F ... +392 °F)

E = EPDM Ethylene Propylene Diene Monomer Rubber

(for Brake fluid,

Temperature range -40 °C ... +150 °C / -40 °F ... +302 °F)

Vibration safety O-ring made of NBR (Buna-N®).

Media

- Suitable for hydraulic oils and other Mineral oil based fluids (Check compatibility of Seal Type material)
- For use with other liquid media please contact STAUFF

Protection Cap

- The complete STAUFF-Test-20-type-SMK range is also available with a hexagonal protection cap made of steel or plastic protection cap.

SMK-20 Test Coupling with Male Threaded Stud	SMK-20 Type G Test Coupling with Straight 24° Fitting	SMK-20 Type K Test Coupling With 24° Taper / O-ring (DKO)	SMK-20-JIC Test Coupling with 37° JIC Connection	SSK-20 Bulkhead



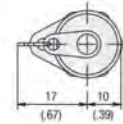
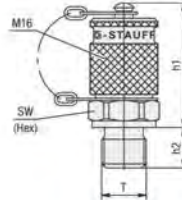


Test Couplings



Test Coupling with Male Threaded Stud SMK-20

A



Ordering Codes

SMK-20*-G1/4*-B*-C*-SK*-W3

* Type	Test Coupling with Ball Check	SMK
* Series	STAUFF Test 20 (Connection Thread M16x2)	-20
* Port Connection	acc. to dimension table	-G1/4
* Seal Material	NBR (Buna-N®)	-B
	FKM (Viton®)	-V
	EPDM	-E
* Seal Type	O-ring Type A	-A
	Metal Joint Type B	-B
	Elastomeric Sealing Type C	-C
	Taper Type D	-D
	O-ring Type E	-E
* Protection Cap	Knurled protection cap	-
	Hexagonal protection cap	-SK
	Plastic protection cap	-KK
* Material Code	Steel, zinc/nickel-plated	-W3
	Stainless Steel V2A - 1.4305 (AISI 303)	-W4
	Stainless Steel V4A - 1.4571 (AISI 316 Ti)	-W5

Seal Type



O-ring Type A



Metal Joint Type B



Elastomeric Sealing Type C



Taper Type D¹



O-ring Type E

For further information on Seal Types,
please see page 74-77.

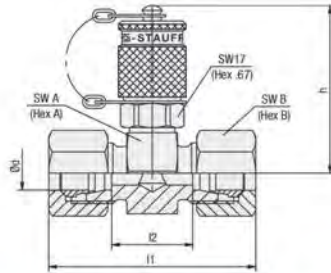
Thread	Seal Type	Working Pressure (^{MPa} / _{psi})	Dimensions (^{mm} / _{in})			Torque (^{Nm} / _{lbf·ft}) ca.	Weight (^g / _{oz}) ca.	Ordering Codes (Standard Option)
			h1	h2	Hex			
T								
M8 x 1	Type A	250	38	8.5	17	6	6.10	SMK-20-M8x1-B-A-W3
		3625	1.50	.33	.67	4.4	13.42	
		630	38	9.8	17	12	6.70	
M10 x 1	Type A	9137	1.50	.39	.67	8.8	14.74	SMK-20-M10x1-B-A-W3
		400	37	8	17	18	6.60	
		5801	1.46	.31	.67	13.3	14.52	
M10 x 1	Type A	630	37	12	17	35	7.00	SMK-20-M10x1-B-B-W3
		9137	1.46	.47	.67	25.8	15.40	
		630	37	12	17	55	7.50	
M12 x 1.5	Type B	9137	1.46	.47	.67	25.8	15.40	SMK-20-M12x1.5-B-B-W3
		630	37	12	17	35	7.00	
		9137	1.46	.47	.67	25.8	15.40	
M14 x 1.5	Type B	630	37	12	19	55	7.50	SMK-20-M14x1.5-B-B-W3
		9137	1.46	.47	.75	40.6	16.50	
		630	37	12	22	70	8.40	
M16 x 1.5	Type B	9137	1.46	.47	.87	51.6	18.48	SMK-20-M16x1.5-B-B-W3
		400	39	8	17	18	6.90	
		5801	1.54	.31	.67	13.3	15.18	
G1/8	Type B	630	37	12	19	55	7.30	SMK-20-G1/8-B-B-W3
		9137	1.46	.47	.75	40.6	16.06	
		630	37	12	22	90	8.90	
G3/8	Type B	9137	1.46	.47	.87	66.4	19.58	SMK-20-G3/8-B-B-W3
		400	39	8	17	18	6.80	
		5801	1.54	.31	.67	13.3	14.96	
M10 x 1	Type C	630	37	12	17	35	6.90	SMK-20-M10x1-B-C-W3
		9137	1.46	.47	.67	25.8	15.18	
		630	37	12	19	50	7.70	
M12 x 1.5	Type C	9137	1.46	.47	.75	36.9	16.94	SMK-20-M12x1.5-B-C-W3
		630	37	12	22	60	8.70	
		9137	1.46	.47	.87	44.2	19.14	
G1/8	Type C	400	39	8	17	18	6.80	SMK-20-G1/8-B-C-W3
		5801	1.54	.31	.67	13.3	14.96	
		630	37	12	19	45	8.10	
G1/4	Type C	9137	1.46	.47	.75	33.2	17.82	SMK-20-G1/4-B-C-W3
		630	37	12	22	80	8.90	
		9137	1.46	.47	.87	59	19.58	
G3/8	Type C	630	39	14	27	110	12.80	SMK-20-G3/8-B-C-W3
		9137	1.54	.55	1.06	81.1	28.16	
		630	37	12	22	80	8.90	
G1/2	Type C	9137	1.46	.47	.87	59	19.58	SMK-20-G1/2-B-C-W3
		400	37	8	17	18	6.70	
		5801	1.46	.31	.67	14.74	14.74	
R1/8 K	Type D ¹	630	35	12	17	15	7.10	SMK-20-R1/8K-B-D-W3
		9137	1.38	.47	.67	15.62	15.62	
		400	36	10	17	6.40	6.40	
1/8 NPT	Type D ¹	5801	1.42	.39	.67	14.08	14.08	SMK-20-1/8NPT-B-D-W3
		630	35	15	17	7.30	7.30	
		9137	1.38	.59	.67	16.06	16.06	
1/4 NPT	Type D ¹	400	38	7.5	17	8	6.70	SMK-20-1/4NPT-B-D-W3
		5.801	1.50	.30	.67	5.9	14.74	
		630	38	9.1	17	20	7.00	
5/16-24 UNF	Type E	9137	1.50	.36	.67	14.7	15.40	SMK-20-5/16UNF-B-E-W3
		630	38	9.2	17	25	7.20	
		9137	1.50	.36	.67	18.4	15.84	
7/16-20 UNF	Type E	630	37	10	19	35	7.60	SMK-20-7/16UNF-B-E-W3
		9137	1.46	.39	.75	25.8	16.72	
		630	37	11.1	19	70	9.58	
1/2-20 UNF	Type E	9137	1.46	.44	.75	51.6	21.08	SMK-20-1/2UNF-B-E-W3
		630	37	10	19	35	7.60	
		9137	1.46	.39	.75	25.8	16.72	
3/4-16 UNF	Type E	630	37	11	17	35	6.90	SMK-20-3/4UNF-B-E-W3
		9137	1.46	.44	.75	51.6	21.08	
		630	38	9.5	17	18	6.60	
M10 x 1	Type E	9137	1.50	.37	.67	13.3	14.52	SMK-20-M10x1-B-E-W3
		630	37	11	17	35	6.90	
		9137	1.46	.43	.67	25.8	15.18	
M12 x 1.5	Type E	630	38	11	19	45	7.80	SMK-20-M12x1.5-B-E-W3
		9137	1.50	.43	.75	33.2	17.16	
		630	38	11	19	45	7.80	
M14 x 1.5	Type E	9137	1.50	.43	.75	33.2	17.16	SMK-20-M14x1.5-B-E-W3
		630	38	11	19	45	7.80	
		9137	1.50	.43	.75	33.2	17.16	

¹ Suitable liquid / plastic sealant required.

Alternative materials and surface finishings are available upon request. Contact STAUFF for further information.
Torque recommendations for Steel mating material.

Dimensional drawings: All dimensions in mm (in).





Test Coupling with Straight 24° Fitting SMK-20 Type G



A

Series	PN (¹ W/PN)	Pipe Ød	Dimensions (² mm/ ³ in)					Weight (⁴ kg/m) ca. per 100 ¹	Ordering Codes (Standard Option) ²
			-l1 ³	l2	h	Hex A	Hex B		
L	315 4568	6	51	21	49	24	14	14,80	SMK-20-06L-B-G-W3-MS
			2.01	.83	1.93	.94	.55	32.56	
		8	51	21	49	24	17	15,80	SMK-20-08L-B-G-W3-MS
			2.01	.83	1.93	.94	.67	34.76	
		10	53	23	49	24	19	16,70	SMK-20-10L-B-G-W3-MS
			2.09	.91	1.93	.94	.75	36.74	
		12	53	23	50,5	27	22	20,00	SMK-20-12L-B-G-W3-MS
			2.09	.91	1.99	1.06	.87	44.00	
		15	55	25	52	30	27	26,00	SMK-20-15L-B-G-W3-MS
	2.17		.98	2.05	1.18	1.06	57.20		
	18	57	24	53	32	32	32,20	SMK-20-18L-B-G-W3-MS	
		2.24	.94	2.09	1.26	1.26	70.84		
	160 2320	22	61	28	55	36	36	38,90	SMK-20-22L-B-G-W3-MS
			2.40	1.10	2.17	1.42	1.42	85.58	
		28	61	28	57,5	41	41	45,20	SMK-20-28L-B-G-W3-MS
			2.40	1.10	2.26	1.61	1.61	99.44	
		35	69	26	60	46	50	63,80	SMK-20-35L-B-G-W3-MS
			2.72	1.02	2.36	1.81	1.97	140.36	
42	71	25	64,5	55	60	88,40	SMK-20-42L-B-G-W3-MS		
	2.80	.98	2.54	2.17	2.36	194.48			
S	630 9137	6	55	25	49	24	17	17,10	SMK-20-06S-B-G-W3-MS
			2.17	.98	1.93	.94	.67	37.62	
		8	55	25	49	24	19	18,10	SMK-20-08S-B-G-W3-MS
			2.17	.98	1.93	.94	.75	39.82	
		10	57	24	49	24	22	20,40	SMK-20-10S-B-G-W3-MS
			2.24	.94	1.93	.94	.87	44.88	
	12	57	24	49	24	24	22,10	SMK-20-12S-B-G-W3-MS	
		2.24	.94	1.93	.94	.94	48.62		
	14	63	27	50,5	27	27	28,20	SMK-20-14S-B-G-W3-MS	
		2.50	1.06	1.99	1.06	1.06	62.04		
	400 5801	16	63	26	52	30	30	32,20	SMK-20-16S-B-G-W3-MS
			2.50	1.02	2.05	1.18	1.18	70.84	
20		69	26	55	36	36	47,30	SMK-20-20S-B-G-W3-MS	
		2.72	1.02	2.17	1.42	1.42	104.06		
25		75	27	57,5	41	46	76,40	SMK-20-25S-B-G-W3-MS	
		2.95	1.06	2.26	1.61	1.81	168.08		
30	81	28	60	46	50	86,80	SMK-20-30S-B-G-W3-MS		
	3.19	1.10	2.36	1.81	1.97	190.96			
315 4568	38	91	29	64,5	55	60	127,70	SMK-20-38S-B-G-W3-MS	
		3.58	1.14	2.54	2.17	2.36	280.94		

Ordering Codes

SMK-20*-18L*-B*-G*-SK*-W3*-MS

* Type	Test Coupling with Ball Check	SMK
* Series	STAUFF Test 20 (Connection Thread M16x2)	-20
* Outside Tube Diameter	acc. to dimension table	-18
* Series	Light Series Heavy Series	L S
* Seal Material	NBR (Buna-N®) FKM (Viton®) EPDM	-B -V -E
* Connection	Straight 24° Fitting	-G
* Protection Cap	Knurled protection cap Hexagonal protection cap Plastic protection cap	- -SK -KK
* Material Code	Steel, zinc/nickel-plated Stainless Steel V2A - 1.4305 (AISI 303) Stainless Steel V4A - 1.4571 (AISI 316 Ti)	-W3 -W4 -W5
* Assembling / Kitting	Fitting body only Fitting body supplied with Cutting rings and union nuts Fitting body supplied with soft-sealing cutting rings and union nuts	- -MS -MSV

¹ Weight including cutting rings and union nuts.

² Standard option: Fitting body supplied with Cutting rings and union nuts.

³ Approximate dimension in assembled condition.

Port acc. to ISO 8434-1 / DIN 2353

Alternative materials and surface finishings are available upon request. Contact STAUFF for further information.

Dimensional drawings: All dimensions in mm (in).



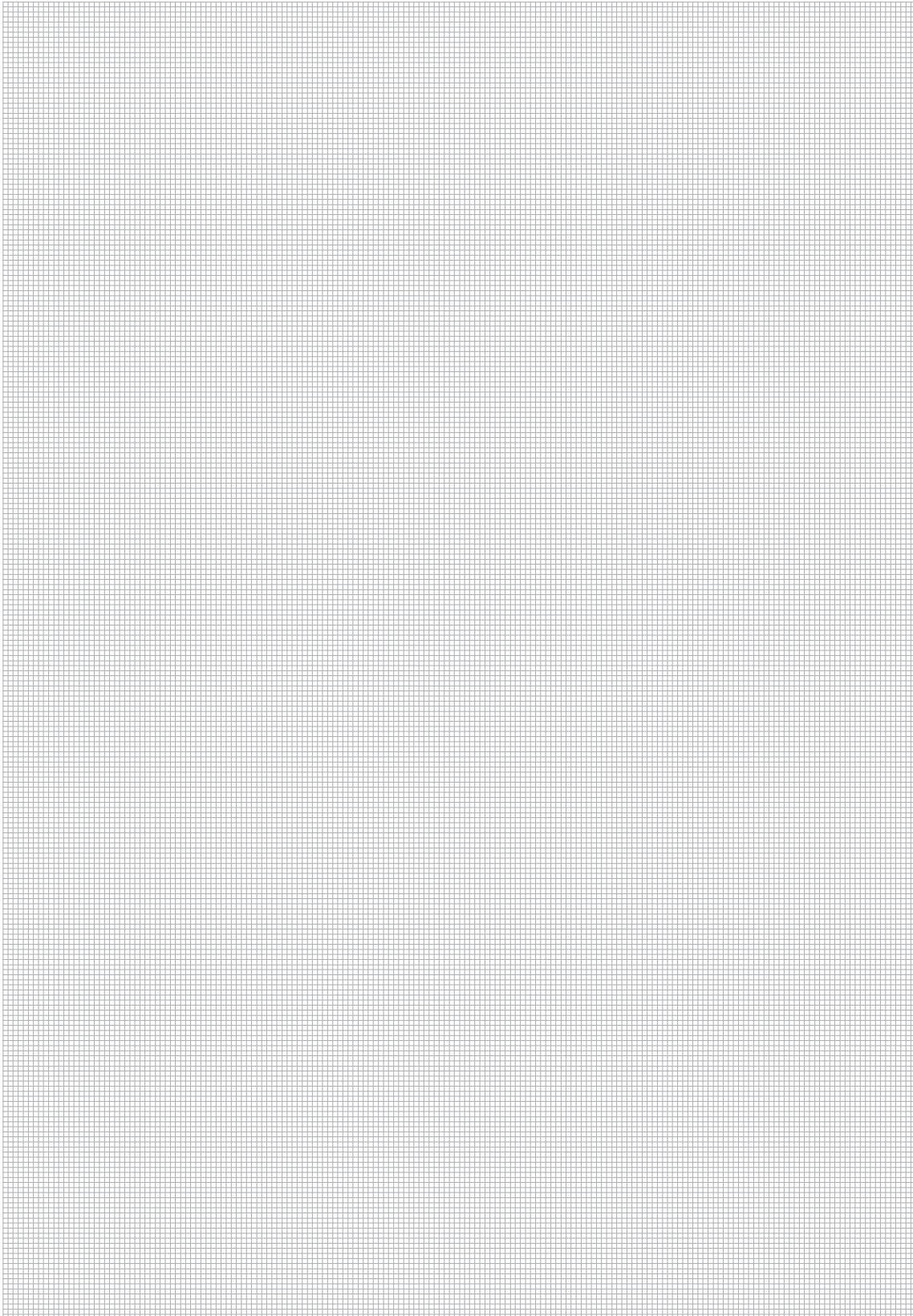
www.stauff.com/7/en/#17

Catalogue 7 • Edition 08/2019

17

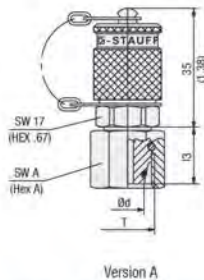
Archivierung: 01/2022

A

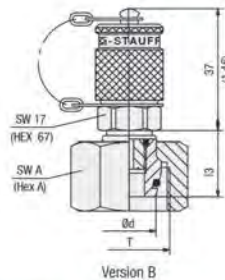




Test Couplings



Version A



Version B

Test Coupling with 24° Taper / O-ring (DKO) SMK-20 Type K



A

Series	PN <small>DN / PN</small>	Pipe Ød	Dimensions <small>(mm/in)</small>			Thread	Version	Weight <small>(kg/lb) ca.</small>	Ordering Codes <small>(Standard Option)</small>
			I3	Hex A	T				
L	315 4568	6	15,5	14	M12 x 1,5	A	8,00	SMK-20-06L-B-K-W3	
			.61	.55			17,60		
		8	15,5	17	M14 x 1,5	A	8,10	SMK-20-08L-B-K-W3	
			.61	.67			17,82		
		10	16,5	19	M16 x 1,5	A	9,30	SMK-20-10L-B-K-W3	
			.65	.75			20,46		
	12	17,5	22	M18 x 1,5	A	10,60	SMK-20-12L-B-K-W3		
		.69	.87			23,32			
	160 2320	15	21	27	M22 x 1,5	B	12,80	SMK-20-15L-B-K-GS-W3	
			.83	1.06			28,16		
18		19,5	32	M26 x 1,5	B	16,20	SMK-20-18L-B-K-GS-W3		
		.77	1,26			35,64			
630 9137	22	20,5	36	M30 x 2	B	19,40	SMK-20-22L-B-K-GS-W3		
		.81	1,42			42,68			
	28	25	41	M36 x 2	B	25,10	SMK-20-28L-B-K-GS-W3		
		.98	1,61			55,22			
400 5801	35	30	50	M45 x 2	B	40,50	SMK-20-35L-B-K-GS-W3		
		1,18	1,97			89,10			
	42	31	60	M52 x 2	B	58,10	SMK-20-42L-B-K-GS-W3		
		1,22	2,36			127,82			
S	630 9137	6	14,5	17	M14 x 1,5	A	7,50	SMK-20-06S-B-K-W3	
			.57	.67			16,50		
		8	16,5	19	M16 x 1,5	A	8,70	SMK-20-08S-B-K-W3	
			.65	.75			19,14		
		10	16,5	22	M18 x 1,5	A	10,20	SMK-20-10S-B-K-W3	
			.65	.87			22,44		
	12	17,5	24	M20 x 1,5	A	11,70	SMK-20-12S-B-K-W3		
		.69	.94			25,74			
	400 5801	14	19,5	27	M22 x 1,5	B	13,10	SMK-20-14S-B-K-GS-W3	
			.77	1,06			28,82		
16		18	30	M24 x 1,5	B	15,40	SMK-20-16S-B-K-GS-W3		
		.71	1,18			33,88			
315 4568	20	24	36	M30 x 2	B	22,00	SMK-20-20S-B-K-GS-W3		
		.94	1,42			48,40			
	25	26	46	M36 x 2	B	36,60	SMK-20-25S-B-K-GS-W3		
		1,02	1,81			80,52			
30	30	50	M42 x 2	B	42,70	SMK-20-30S-B-K-GS-W3			
	1,18	1,97			93,94				

Ordering Codes

SMK-20*-18L*-B*-K*-GS*-SK*-W3

* Type	Test Coupling with Ball Check	SMK
* Series	STAUFF Test 20 (Connection Thread M16x2)	-20
* Outside Tube Diameter	acc. to dimension table	-18
* Series	Light Series	L
	Heavy Series	S
* Seal Material	NBR (Buna-N®)	-B
	FKM (Viton®)	-V
	EPDM	-E
* Connection	24° Taper / O-ring (DKO)	-K
* Design	One-piece design (Version A)	-
	Screwed design (Version B)	-GS
* Protection Cap	Knurled protection cap	-
	Hexagonal protection cap	-SK
	Plastic protection cap	-KK
* Material Code	Steel, zinc/nickel-plated	-W3
	Stainless Steel V2A - 1.4305 (AISI 303)	-W4
	Stainless Steel V4A - 1.4571 (AISI 316 Ti)	-W5

With 24° Taper / O-ring (DKO) Connection acc. to ISO 8434-1 / DIN 2353
Alternative materials and surface finishings are available upon request. Contact STAUFF for further information.

Dimensional drawings: All dimensions in mm (in).



www.stauff.com/7/en/#19

Catalogue 7 • Edition 08/2019

19

Archivierung: 01/2022

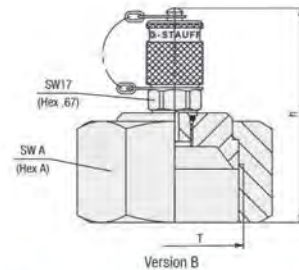
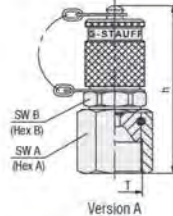


Test Couplings



Test Coupling with 37° JIC Connection SMK-20-JIC Type K

A



Ordering Codes

***SMK*-20*-JIC3/4*-B*-K*-GS*-SK*-W3**

* Type	Test Coupling with Ball Check	SMK
* Series	STAUFF Test 20 (Connection Thread M16x2)	-20
* Connection	37° JIC Connection	-JIC
* Outside Tube Diameter	acc. to dimension table	3/4
* Seal Material	NBR (Buna-N®)	-B
	FKM (Viton®)	-V
	EPDM	-E
* Connection	37° JIC Taper	-K
* Design	One-piece design (Version A)	-
	Screwed design (Version B)	-GS
* Protection Cap	Knurled protection cap	-
	Hexagonal protection cap	-SK
	Plastic protection cap	-KK
* Material Code	Steel, zinc/nickel-plated	-W3
	Stainless Steel V2A - 1.4305 (AISI 303)	-W4
	Stainless Steel V4A - 1.4571 (AISI 316 Ti)	-W5

Pipe Ø	JIC- Size	Dimensions			Thread	Version	Weight (^{kg} / _{pc}) ca. per 100	Ordering Codes (Standard Option)
		h	Hex A	Hex B				
1/4	-4	53	17	17	7/16-20 UNF	A	8,40	SMK-20-JIC1/4-B-K-W3
		2.09	.67	.67				
5/16	-5	53,5	17	17	1/2-20 UNF	A	8,30	SMK-20-JIC5/16-B-K-W3
		2.11	.67	.67				
3/8	-6	55,5	19	17	9/16-18 UNF	A	9,10	SMK-20-JIC3/8-B-K-W3
		2.19	.75	.67				
1/2	-8	56,5	22	19	3/4-16 UNF	A	10,40	SMK-20-JIC1/2-B-K-W3
		2.22	.87	.75				
5/8	-10	60	27	22	7/8-14 UNF	A	14,20	SMK-20-JIC5/8-B-K-W3
		2.36	1.06	.87				
3/4	-12	70,5	32	-	1-1/16-12 UN	B	17,70	SMK-20-JIC3/4-B-K-GS-W3
		2.78	1.26	-				
1	-16	69	38	-	1-5/16-12 UN	B	26,90	SMK-20-JIC1-B-K-GS-W3
		2.72	1.50	-				
1-1/4	-20	73,5	50	-	1-5/8-12 UN	B	40,20	SMK-20-JIC1-1/4-B-K-GS-W3
		2.89	1.97	-				
1-1/2	-24	76	60	-	1-7/8-12 UN	B	63,50	SMK-20-JIC1-1/2-B-K-GS-W3
		2.99	2.36	-				

With 37° JIC Connection acc. to SAE J514

Alternative materials and surface finishings are available upon request. Contact STAUFF for further information.

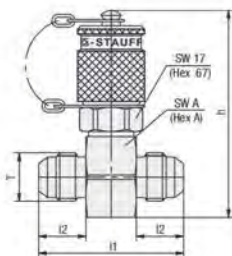
Dimensional drawings: All dimensions in mm (in).





Test Coupling with Straight 37° JIC Connection
SMK-20-JIC Type G

A



Pipe Ø inch	JIC- Size	Dimensions (mm/°)				Thread		Weight (kg/lb) ca. per 100	Ordering Codes (Standard Option)
		l1	l2	h	Hex A	T			
1/4	-4	43	14	61	24	7/16-20 UNF	13,70	SMK-20-JIC1/4-B-G-W3	
		1.69	.55	2.40	.94		30.14		
5/16	-5	43	14	61	24	1/2-20 UNF	12,90	SMK-20-JIC5/16-B-G-W3	
		1.69	.55	2.40	.94		28.38		
3/8	-6	43	14	61	24	9/16-18 UNF	13,00	SMK-20-JIC3/8-B-G-W3	
		1.69	.55	2.40	.94		28.60		
1/2	-8	48,5	16,5	67	30	3/4-16 UNF	17,90	SMK-20-JIC1/2-B-G-W3	
		1.91	.65	2.64	1.18		39.38		
5/8	-10	53,5	19,5	67	30	7/8-14 UNF	20,70	SMK-20-JIC5/8-B-G-W3	
		2.11	.77	2.64	1.18		45.54		
3/4	-12	59	22	73	36	1-1/16-12 UN	27,00	SMK-20-JIC3/4-B-G-W3	
		2.32	.87	2.87	1.42		59.40		
1	-16	61	23	78	41	1-5/16-12 UN	32,60	SMK-20-JIC1-B-G-W3	
		2.40	.91	3.07	1.61		71.72		
1-1/4	-20	65,5	24,5	83	46	1-5/8-12 UN	45,30	SMK-20-JIC1-1/4-B-G-W3	
		2.58	.96	3.26	1.81		99.66		
1-1/2	-24	72	27,5	92	55	1-7/8-12 UN	58,30	SMK-20-JIC1-1/2-B-G-W3	
		2.83	1.08	3.62	2.17		128.26		

With Straight 37° JIC Connection acc. to SAE J514
Alternative materials and surface finishings are available upon request. Contact STAUFF for further information.

Ordering Codes

***SMK*-20*-JIC3/4*-B*-G*-SK*-W3**

* Type	Test Coupling with Ball Check	SMK
* Series	STAUFF Test 20 (Connection Thread M16x2)	-20
* Connection	37° JIC Connection	-JIC
* Outside Tube Diameter	acc. to dimension table	3/4
* Seal Material	NBR (Buna-N®)	-B
	FKM (Viton®)	-V
	EPDM	-E
* Connection	Straight Fitting	-G
* Protection Cap	Knurled protection cap	-
	Hexagonal protection cap	-SK
	Plastic protection cap	-KK
* Material Code	Steel, zinc/nickel-plated	-W3
	Stainless Steel V2A - 1.4305 (AISI 303)	-W4
	Stainless Steel V4A - 1.4571 (AISI 316 Ti)	-W5

Dimensional drawings: All dimensions in mm (in).



www.stauff.com/7/en/#21

Catalogue 7 • Edition 08/2019

21

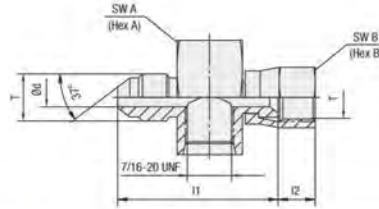
Archivierung: 01/2022

Test Couplings



Swivel Run Tee with 37° JIC Connection SGV-JIC Type FM

A



Ordering Codes

***SGV*-7/16UNF*-12*-JIC3/4*-FM*-W3**

* Type	Swivel Run Tee	SGV
* Port Connection	acc. to dimension table	-7/16UNF
* JIC Size	acc. to dimension table	-12
* Connection	37° JIC Connection	-JIC
* Outside Tube Diameter	acc. to dimension table	3/4
* Connection	Female/Male Thread	-FM
* Material Code	Steel, zinc/nickel-plated	-W3

Pipe Ø	JIC- Size	Dimensions (mm/in)						Thread T	Weight (g/lb) ca. per 100	Ordering Codes (Standard Option)
		Ø d	I1	I2	Hex A	Hex B	Inch			
1/4	04	4,37 .17	37,74 1,49	8,74 .34	27 1,06	14,29 .56	7/16-20 UNF	8,96 19,71	SGV-7/16UNF-04-JIC1/4-FM-W3	
3/8	06	7,54 .30	40,01 1,58	9,53 .38	27 1,06	17,46 .69	9/16-18 UNF	9,60 21,12	SGV-7/16UNF-06-JIC3/8-FM-W3	
1/2	08	9,93 .39	44,65 1,76	10,72 .42	27 1,06	22,23 .88	3/4-16 UNF	11,20 24,64	SGV-7/16UNF-08-JIC1/2-FM-W3	
5/8	10	12,29 .48	48,26 1,90	12,70 .50	28,58 1,13	25,40 1,00	7/8-14 UNF	17,10 37,62	SGV-7/16UNF-10-JIC5/8-FM-W3	
3/4	12	15,47 .61	51,33 2,02	14,45 .57	31,75 1,25	31,75 1,25	1-1/16-12 UN	20,40 44,88	SGV-7/16UNF-12-JIC3/4-FM-W3	
1	16	21,44 .84	57,30 2,26	15,09 .59	38,10 1,50	38,10 1,50	1-5/16-12 UN	30,80 67,76	SGV-7/16UNF-16-JIC1-FM-W3	

Alternative materials and surface finishings are available upon request. Contact STAUFF for further information.

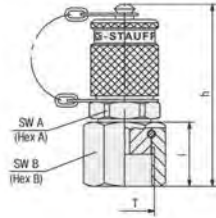
Dimensional drawings: All dimensions in mm (in).





Test Coupling with ORFS Connection SMK-20 Type ORFS

A



Thread T	ORFS- Size	Dimensions (^{mm} / _{in})				Weight (^{kg} / _{in}) ca. per 100	Ordering Codes (Standard Option)
		h	l	Hex A	Hex B		
9/16-18 UNF	04	54	19	17	19	9.50	SMK-20-04-ORFS-B-W3
		2.1	.75	.67	.75	20.90	
11/16-16 UN	06	54	19	19	21	9.80	SMK-20-06-ORFS-B-W3
		2.1	.75	.75	.80	21.60	
13/16-16 UN	08	54	19	22	24	11.69	SMK-20-08-ORFS-B-W3
		2.1	.75	.87	.87	25.73	

Alternative materials and surface finishings are available upon request. Contact STAUFF for further information.

Ordering Codes

SMK-20*-06*-ORFS*-B*-SK*-W3

* Type	Test Coupling with Ball Check	SMK
* Series	STAUFF Test 20 (Connection Thread M16x2)	-20
* ORFS-Size	acc. to dimension table	-06
* Connection	ORFS	-ORFS
* Seal Material	NBR (Buna-N®) FKM (Viton®) EPDM	-B -V -E
* Protection Cap	Knurled protection cap Hexagonal protection cap Plastic protection cap	- -SK -KK
* Material Code	Steel, zinc/nickel-plated Stainless Steel V2A - 1.4305 (AISI 303) Stainless Steel V4A - 1.4571 (AISI 316 Ti)	-W3 -W4 -W5

Dimensional drawings: All dimensions in mm (in).



www.stauff.com/7/en/#23

Catalogue 7 • Edition 08/2019

23

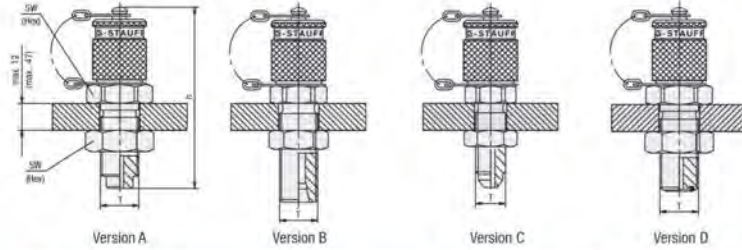
Archivierung: 01/2022

Test Couplings



Bulkhead SSK-20

A



Ordering Codes

SSK-20*-JIC1/4*-M*-B*-SK*-W3

* Type	Bulkhead with Ball Check	SSK
* Series	STAUFF Test 20 (Connection Thread M16x2)	-20
* Connection	3/8" JIC Connection	-JIC
* Outside Tube Diameter	acc. to dimension table	1/4
* Connection	Male Thread	-M
* Seal Material	NBR (Buna-N®) FKM (Viton®) EPDM	-B -V -E
* Protection Cap	Knurled protection cap Hexagonal protection cap Plastic protection cap	- -SK -KK
* Material Code	Steel, zinc/nickel-plated Stainless Steel V2A - 1.4305 (AISI 303) Stainless Steel V4A - 1.4571 (AISI 316 Ti)	-W3 -W4 -W5

Thread	Dimensions (mm/in)		Version	Weight (g/lb) ca. per 100	Ordering Codes (Standard Option)
	T	h			
M16 x 2	72	19	A	10,80	SSK-20-B-W3
	2,83	,75		23,76	
M14 x 1,5 ¹	72	19	B	10,10	SSK-20/08L-B-W3
	2,83	,75		22,22	
M16 x 1,5 ¹	72	22	B	12,30	SSK-20/08S-B-W3
	2,83	,87		27,06	
M18 x 1,5 ¹	72	22	B	11,00	SSK-20/12L-B-W3
	2,83	,87		26,18	
7/16-20 UNF ²	66	17	C	12,30	SSK-20-JIC1/4-M-B-W3
	2,60	,67		27,11	
9/16-18 UNF ²	67	22	D	12,00	SSK-20-04-ORFS-B-W3
	2,64	,87		26,40	
11/16-16 UN ³	72	27	D	16,10	SSK-20-06-ORFS-B-W3
	2,83	1,06		35,42	
13/16-16 UNF ³	75	30	D	10,00	SSK-20-08-ORFS-B-W3
	2,95	1,18		22,04	

Also available for gaseous media: Type SSKK

¹ Compression ring assembly 08L/08S/12L according to ISO 8434-1 / DIN 2353

² JIC cone fitting according to SAE J514

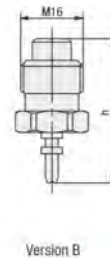
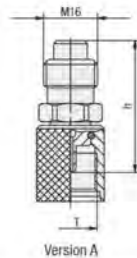
³ O-ring face sealing according to SAE J1453

Standard option - With Hexagon Lock Nut.

Standard option - Version B: Excluding cutting rings and union nuts

Alternative materials and surface finishings are available upon request. Contact STAUFF for further information.

Test Adaptor SAD-20



Ordering Codes

SAD-20/15*-B*-W3

* Type	Test Adaptor	SAD
* Connection Type	Version A Version A Version B	-20/15 -20/12 -20/10
* Seal Material	NBR (Buna-N®) FKM (Viton®) EPDM	-B -V -E
* Material Code	Steel, zinc/nickel-plated Stainless Steel V2A - 1.4305 (AISI 303) Stainless Steel V4A - 1.4571 (AISI 316 Ti)	-W3 -W4 -W5

Thread	Dimensions (mm/in)		Version	Weight (g/lb) ca. per 100	Ordering Codes (Standard Option)
	T	h			
M16 x 1,5	39	1,54	A	5,80	SAD-20/15-B-W3
	39	1,54		12,76	
S12 ¹	39	1,54	A	5,30	SAD-20/12-B-W3
	37	1,46		11,66	
Plug in	37	1,46	B	3,40	SAD-20/10-B-W3
	37	1,46		7,48	

¹ Special thread: buttress thread S12,65 x 1,5

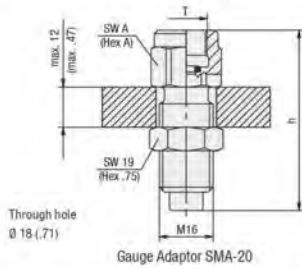
Alternative materials and surface finishings are available upon request. Contact STAUFF for further information.

Dimensional drawings: All dimensions in mm (in).

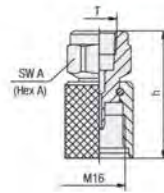




Test Couplings



Gauge Adaptor SMA-20



Direct Gauge Adaptor SMD-20

Gauge Adaptor
SMA-20

Direct Gauge Adaptor
SMD-20



A

Thread	Dimensions (mm/in)		Weight (g/lb.) ca. per 100	Ordering Codes (Standard Option)
	T	h Hex A		
G1/4	54	19	7,20	SMA-20-G1/4-B-OR-W3
	2.13	.75	15.84	
G1/2	64	27	12,40	SMA-20-G1/2-B-OR-W3
	2.52	1.06	27.28	
1/4 NPT	54	19	7,20	SMA-20-1/4NPT-B-W3
	2.13	.75	15.84	
1/2 NPT	64	27	13,50	SMA-20-1/2NPT-B-W3
	2.52	1.06	29.70	
7/16-20 UNF	54	19	7,60	SMA-20-7/16UNF-B-W3
	2.16	.75	16.76	
9/16-18 UNF	57	19	7,50	SMA-20-9/16UNF-B-W3
	2.24	.75	16.53	
G1/4	41	19	5,70	SMD-20-G1/4-B-OR-W3
	1.61	.75	12.54	
G1/2	51	27	10,10	SMD-20-G1/2-B-OR-W3
	2.01	1.06	22.22	
1/4 NPT	41	19	5,80	SMD-20-1/4NPT-W3
	1.61	.75	12.76	
1/2 NPT	51	27	10,80	SMD-20-1/2NPT-W3
	2.01	1.06	23.76	
7/16-20 UNF	41	19	6,00	SMD-20-7/16UNF-W3
	1.61	.75	13.20	
9/16-18 UNF	43	19	5,25	SMD-20-9/16UNF-W3
	1.69	.75	11.55	

Ordering Codes

***SMA*-20*-G1/4*-B*-OR*-W3**

* Type	Gauge Adaptor	SMA
* Series	STAUFF Test 20 (Connection Thread M16x2)	-20
* Thread	acc. to dimension table	-G1/4
* Seal Material	NBR (Buna-N®)	-B
	FKM (Viton®)	-V
	EPDM	-E
* Seal Type	with O-ring	-OR
* Material Code	Steel, zinc/nickel-plated	-W3
	Stainless Steel V2A - 1.4305 (AISI 303)	-W4
	Stainless Steel V4A - 1.4571 (AISI 316 Ti)	-W5

Standard option - SMA-20: With Hexagon Lock Nut.

Alternative materials and surface finishings are available upon request. Contact STAUFF for further information.
Snubber on request.

Dimensional drawings: All dimensions in mm (in).



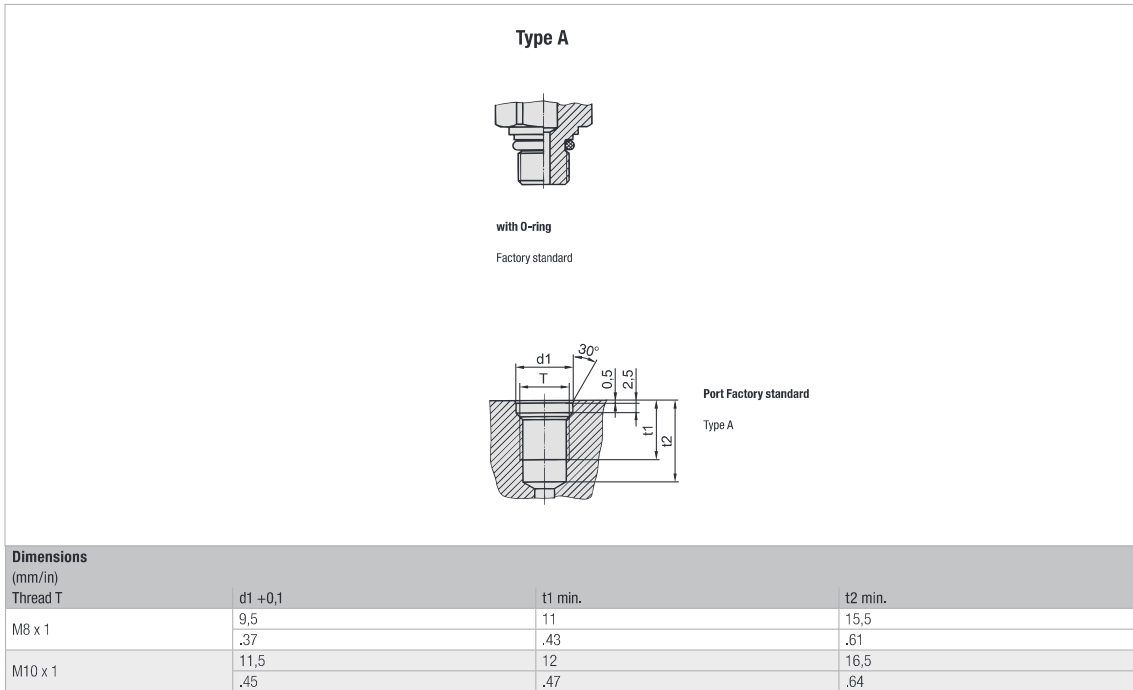
www.stauff.com/7/en/#25

Catalogue 7 • Edition 08/2019

25

Archivierung: 01/2022

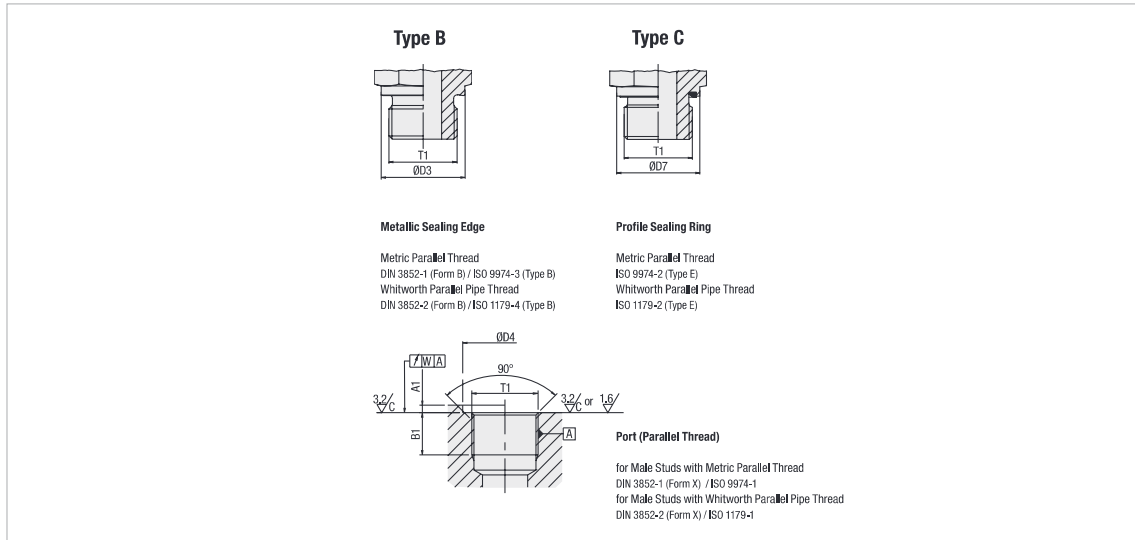
Port Dimensions and Seal Types

D


Dimensional drawings: All dimensions in mm (in).



Port Dimensions and Seal Types



D

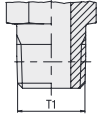
Dimensions (mm/in)							
Thread T1 ¹	D3	D7 _{-0.2}	D4 small _{min}	D4 wide _{min}	A1 _{max}	B1 _{min}	W
M 10 x 1	14 .55	13,9 .55	15 .59	20 .79	1 .04	8 .31	0,1 .0039
M 12 x 1,5	17 .67	16,9 .67	18 .71	25 .98	1,5 .06	12 .47	0,1 .0039
M 14 x 1,5	19 .75	18,9 .74	20 .79	25 .98	1,5 .06	12 .47	0,1 .0039
M 16 x 1,5	21 .83	21,9 .86	23 .91	28 1,10	1,5 .06	12 .47	0,1 .0039
M 18 x 1,5	23 .91	23,9 .94	25 .98	30 1,18	2 .08	12 .47	0,1 .0039
M 20 x 1,5	24 .94	25,9 1,02	27 1,06	34 1,34	2 .08	14 .55	0,1 .0039
M 22 x 1,5	27 1,06	26,9 1,06	28 1,10	34 1,34	2,5 .10	14 .55	0,1 .0039
G 1/8 A	14 .55	13,9 .55	15 .59	19 .75	1 .04	8,5 .33	0,1 .0039
G 1/4 A	18 .71	18,9 .74	20 .79	25 .98	1,5 .06	12,5 .49	0,1 .0039
G 3/8 A	22 .87	21,9 .86	23 .91	28 1,10	2 .08	12,5 .49	0,1 .0039
G 1/2 A	26 1,02	26,9 1,06	28 1,10	34 1,34	2,5 .10	15 .59	0,1 .0039

¹ Appendix A in the thread description does not apply to (female) threaded ports.

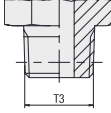


Port Dimensions and Seal Types
D

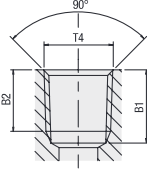
Type D



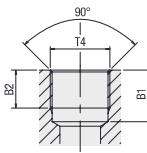
Taper Thread
National Pipe Thread (NPT)
ANSI/ASME B1.20.1-1983



Taper Thread
Metric Taper Thread
DIN 3852-1 (Form C)
Whitworth Taper Pipe Thread
DIN 3852-2 (Form C)



Port (Taper Thread)
for Male Studs with National Pipe NPT Thread
ANSI/ASME B1.20.1-1983



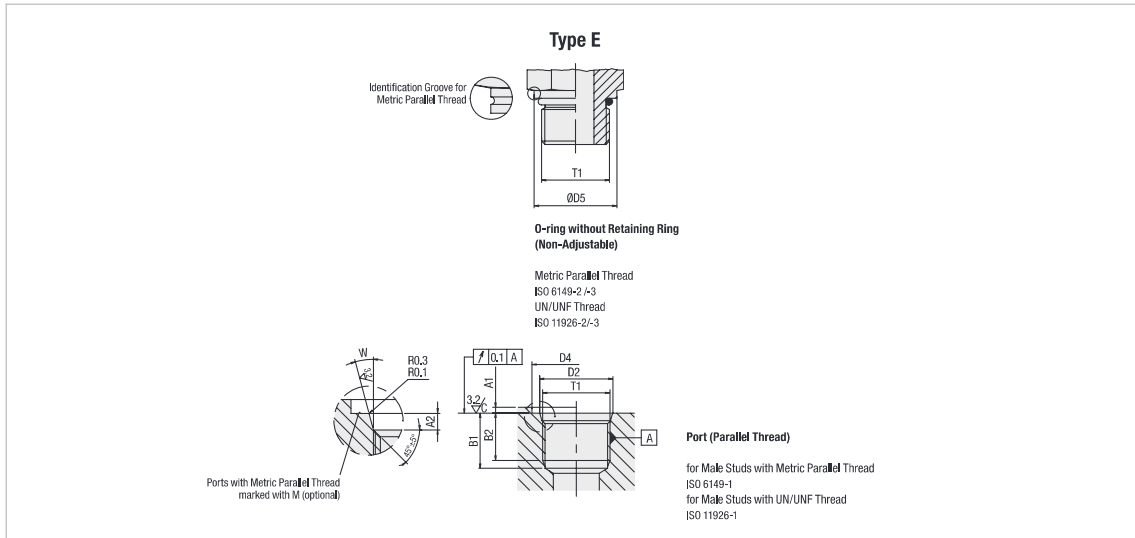
Port (Parallel Thread)
for Male Studs with Metric Taper Thread
DIN 3852-1 (Form Z)
for Male Studs with Whitworth Taper Pipe Thread
DIN 3852-2 (Form Z)

Dimensions (mm/in)				
Thread T1	Thread T3	Thread T4	B1 _{min}	B2 _{min}
1/8-27 NPT		1/8-27 NPT		6,9 .27
1/4-18 NPT		1/4-18 NPT		10 .39
1/2-14 NPT		1/2-14 NPT		13,6 .54
	R 1/8 keg.	Rp 1/8	8,5 .33	5,5 .22
	R 1/4 keg.	Rp 1/4	12,5 .49	8,5 .33
	R 3/8 keg.	Rp 3/8	12,5 .49	8,5 .33
	R 1/2 keg.	Rp 1/2	16,5 .65	10,5 .41

Suitable liquid / plastic sealant required to achieve leak-tightness.

Dimensional drawings: All dimensions in mm (in).



Port Dimensions and Seal Types

D

Dimensions (mm/in)										
Thread T1 ¹	D5	D4 small _{min}	D4 wide _{min}	D2 _{+0,1 (UNF:±0,05)}	A1 _{max}	A2 _{+0,4}	B1 _{min}	B2 _{min}	W _{+1*}	
M 10 x 1	13,8 .54	16 .63	20 .79	11,1 .44	1 .04	1,6 .06	11,5 .45	10 .39	12 .47	
M 12 x 1,5	16,8 .66	19 .75	23 .91	13,8 .54	1,5 .06	2,4 .09	14 .55	11,5 .45	15 .59	
M 14 x 1,5	18,8 .74	21 .83	25 .98	15,8 .62	1,5 .06	2,4 .09	14 .55	11,5 .45	15 .59	
M 16 x 1,5	21,8 .86	24 .94	28 1.10	17,8 .70	1,5 .06	2,4 .09	15,5 .61	13 .51	15 .59	
M 22 x 1,5	26,8 1.06	29 1.14	33 1.30	23,8 .94	2 .08	2,4 .09	18 .71	15,5 .61	15 .59	
M 27 x 2	31,8 1.25	34 1.34	40 1.57	29,4 1.16	2 .08	3,1 .12	22 .87	19 .75	15 .59	
5/16-24 UNF-2A	11,1 .43	17 .66		9,1 .35	1,6 .06	1,9 .07	10 .39	12 .47	12 .47	
7/16-20 UNF-2A	14,4 .57	21 .83		12,45 .49	1,6 .06	2,4 .09	14 .55	11,5 .45	12 .47	
1/2-20 UNF-2A	16 .63	23 .91		14,05 .55	1,6 .06	2,4 .09	14 .55	11,5 .45	12 .47	
9/16-18 UNF-2A	17,6 .69	25 .98		15,7 .62	1,6 .06	2,5 .10	15,5 .61	12,7 .50	12 .47	
3/4-16 UNF-2A	21,8 .86	30 1.18		20,65 .81	2,4 .09	2,5 .10	17,5 .69	14,3 .56	15 .59	
7/8-14 UNF-2A	26,8 1.06	34 1.34		24,0 .94	2,4 .09	2,5 .10	20 .79	16,7 .66	15 .59	

¹ Appendix -2B instead of -2A applies for (female) threaded ports.

Dimensional drawings: All dimensions in mm (in).


www.stauff.com/7/en/#77

Catalogue 7 • Edition 08/2019

77

Archivierung: 01/2022