

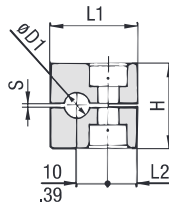
Standard Series according to DIN 3015, Part 1



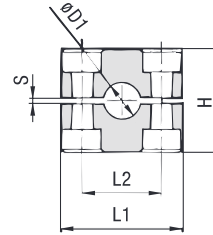
Clamp Body - Profiled Design

Profiled Inside Surface with Tension Clearance

A



STAUFF Group 1



STAUFF Group 1A to 8

Ordering Codes

Clamp Body *1*06-*PP
Clamp Body, STAUFF Group 1A *1*06A-*PP

One clamp body is consisting of two clamp halves.

- * STAUFF Group **1**
- * Exact outside diameter Ø D1 (mm) **06**
- * Material code (see below) **PP**

Standard Materials

 **Polypropylene**
 Colour: Green
 Material code: **PP**

 **Polypropylene**
 Colour: Black
 Material code: **PP-BK**

 **Polyamide**
 Colour: Black
 Material code: **PA**

 **Thermoplastic Elastomer (87 Shore-A)**
 Colour: Black
 Material code: **SA**

 **Aluminium**
 Colour: Self-Colour
 Material code: **AL** (STAUFF Group 1A to 6)

See pages 154 / 155 for material properties and technical information.

Special Materials

Please contact STAUFF for further details on fire-proof clamp body materials, tested and approved according to several international fire-protection standards (such as BS 6853, EN 45545-2, UL 94 and many more).

See pages 156 / 157 for material properties and technical information.

Product Features

- Proven, tested and trusted product in various markets
- Recommended for the safe installation of rigid pipes and tubes
- Available for all commonly used pipe and tube outside diameters
- Environmental protection due to vibration/noise reducing design
- Excellent weathering resistance, even under extreme conditions

Group	STAUFF	DIN	Outside Diameter		Nominal Bore		Ordering Codes (2 Clamp Halves) (* = Material)	Dimensions (mm/in)							
			Pipe / Tube Ø D1 (mm)	(in)	Pipe (in)	Copper Tube ASTM B88 (in)		L1	L2	H	S min.	Width			
1	0		6				106-*								
			6,4	1/4			106,4-***								
			8	5/16			108-*	28	9,5	27	0,4	30			
			9,5	3/8		1/4	109,5-***	1.10	.37	1.06	.02	1.18			
			10		1/8		110-*								
			12				112-*								
1A	1		6				106A-*								
			6,4	1/4			106,4A-***								
			8	5/16			108A-***	37	20	27	0,4	30			
			9,5	3/8		1/4	109,5A-***	1.46	.79	1.06	.02	1.18			
			10		1/8		110A-***								
			12				112A-***								
2	2		12,7	1/2		3/8	212,7-***								
			13,5		1/4		213,5-***								
			14				214-***	42	26	33	0,6	30			
			15				215-***	1.65	1.02	1.30	.02	1.18			
			16	5/8		1/2	216-***								
			17,2		3/8		217,2-***								
3	3		18				218-***								
			19	3/4			319-***								
			20				320-***								
			21,3		1/2		321,3-***	50	33	36	0,6	30			
			22	7/8		3/4	322-***	1.97	1.30	1.42	.02	1.18			
			25				325-***								
4	4		25,4	1			325,4-***								
			26,9		3/4		426,9-***								
			28				428-***								
			28,6			1	428,6-***	59	40	42	0,6	30			
			30				430-***	2.32	1.57	1.65	.02	1.18			
			32				432-***								
5	5		32	1-1/4			532-***								
			33,7		1		533,7-***								
			35			1-1/4	535-***								
			38	1-1/2			538-***	71	52	58	0,8	30			
			40				540-***	2.80	2.05	2.28	.03	1.18			
			41,3			1-1/2	541,3-***								
6	6		42			1-1/4	542-***								
			44,5	1-3/4			644,5-***								
			48,3		1-1/2		648,3-***	86	66	66	0,8	30			
			50,8	2			650,8-***	3.39	2.60	2.60	.03	1.18			
			54			2	654-***								
			57,2	2-1/4			757,2-***								
7	7		60,3			2	760,3-***								
			63,5	2-1/2			763,5-***	121	94	93	0,8	30			
			70	2-3/4			770-***	4.76	3.70	3.66	.03	1.18			
			73		2-1/2 (ANSI B 36-10)		773-***								
			76,1	3	2-1/2 (DIN EN 10220)		776,1-***								
			88,9		3		888,9-***	147	120	118	0,8	30			
8	8		102	4	3-1/2		8102L-***	5.79	4.72	4.65	.03	1.18			

Additional outside diameters are available upon request. Please contact STAUFF for further information.

Dimensional drawings: All dimensions in mm (in).

