

The direct operated pressure relief valves series RDM are in sandwich design for easy configuration of stock systems.

They relieve the pressure of the hydraulic system to the adjusted value.

Function

PT... pressure is relieved from P to T.

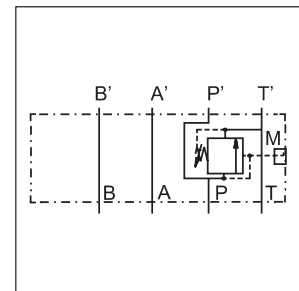
TT... pressure pre-loading in T.

Features

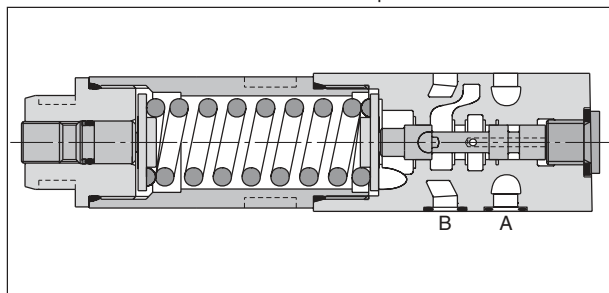
- The direct operated, cushioned piston design results in fast response, low leakage and minimal hysteresis.
- Pressure settings:
bar 25, 64, 160, 210, 350 for RDM2,
bar 19, 50, 100, 150, 210 for RDM3.
- Adjustment modes:
- Hexagon socket
- Cylinder lock
- Turning knob
- Gauge port
- RDM2 - NG06 (CETOP 03)
RDM3 - NG10 (CETOP 05)



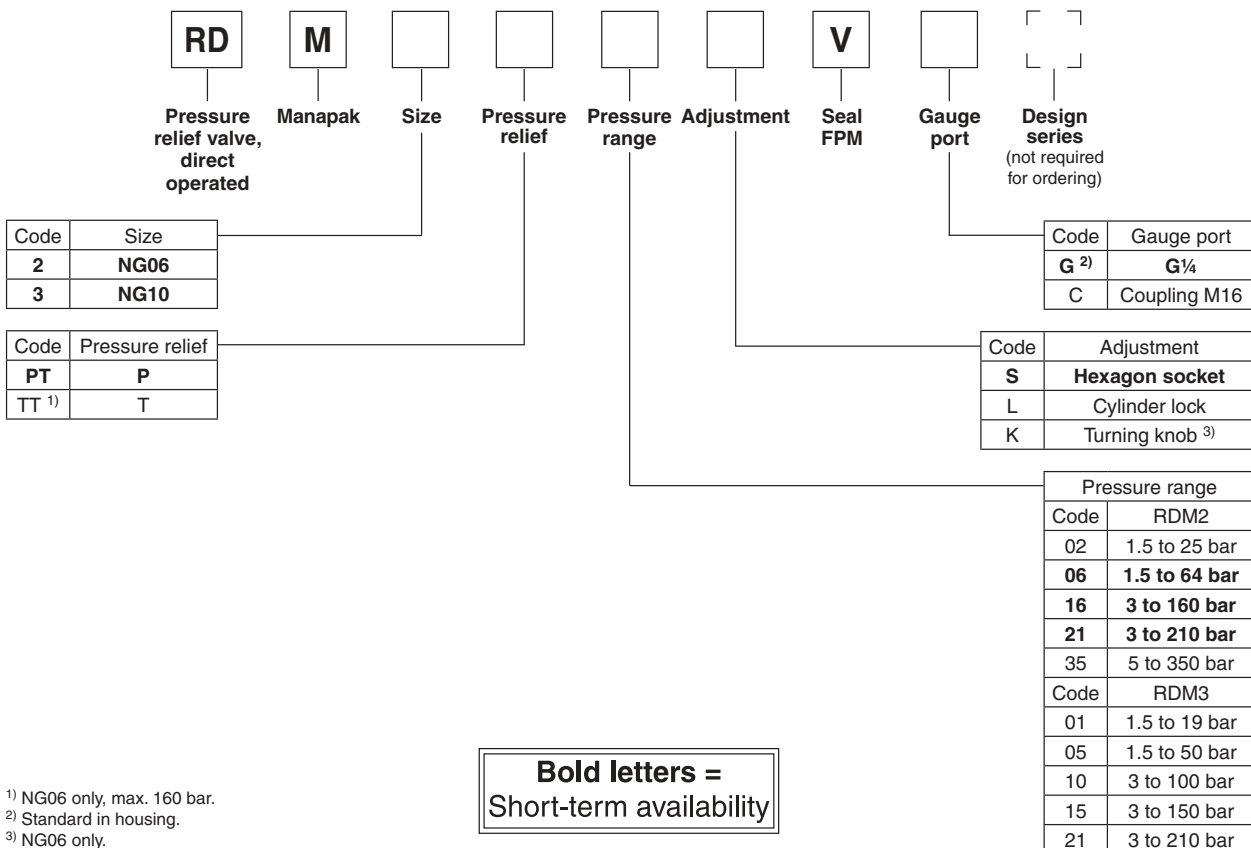
RDM2



Example PT



RDM2

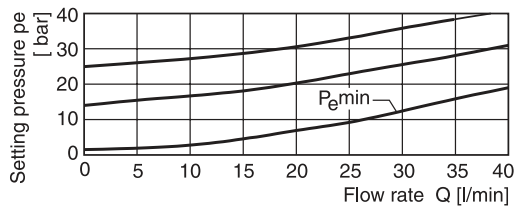
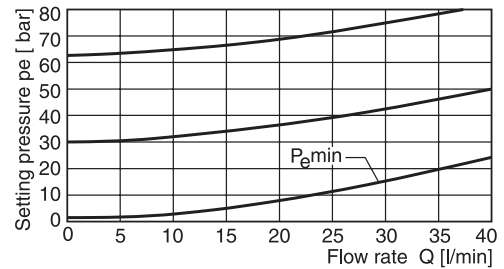
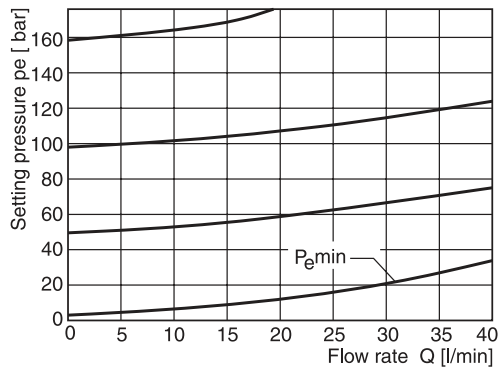
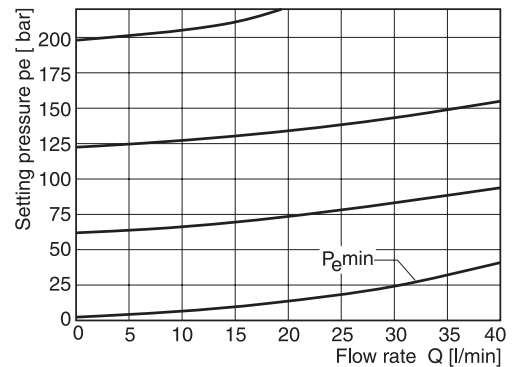
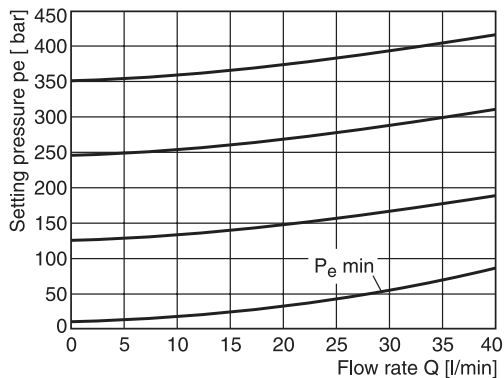
Ordering code

¹⁾ NG06 only, max. 160 bar.

²⁾ Standard in housing.

³⁾ NG06 only.

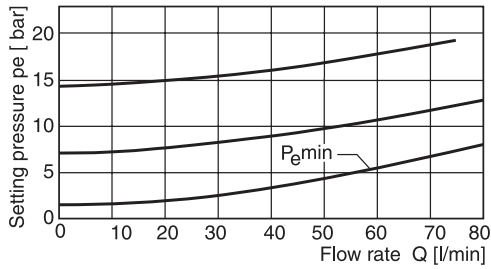
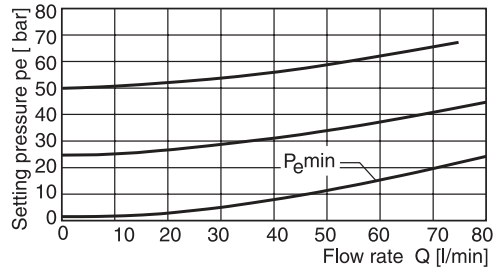
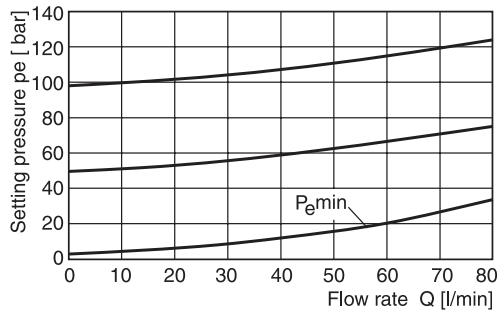
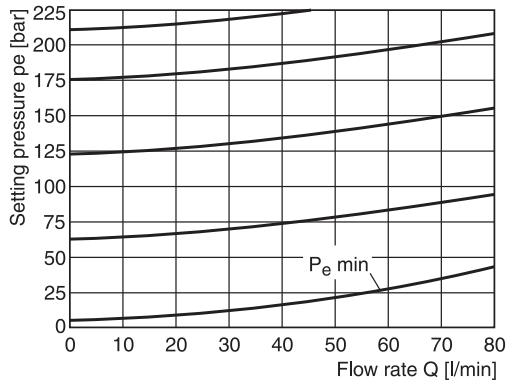
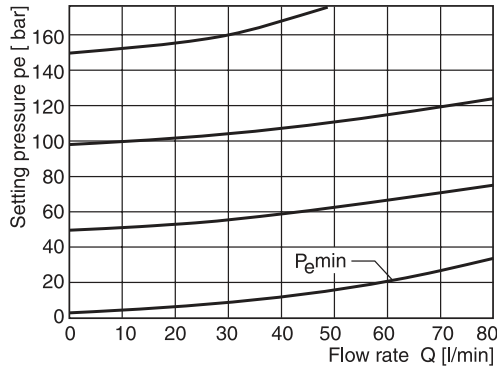
Technical Data / Performance Curves
Technical data

General			RDM2	RDM3
Series			NG06	NG10
Size				
Mounting interface		ISO 4401		
Weight	[kg]		1.3	2.6
MTTF _D value	[years]	150		
Ambient temperature	[°C]	-20...+60		
Hydraulic				
Max. operating pressure	P, A, B [bar]		350	315
	T [bar]		50	10
Fluid		Hydraulic oil according to DIN 51524		
Fluid temperature	[°C]	-20...+70		
Viscosity, permitted	[cSt] / [mm ² /s]	20 ... 400		
Viscosity, recommended	[cSt] / [mm ² /s]	30 ... 80		
Filtration		ISO 4406 (1999); 18/16/13		
Max. flow	[l/min]		40	80

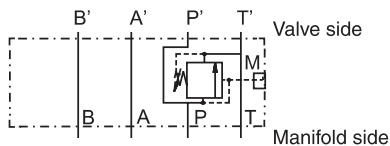
Performance curves
RDM2 02

RDM2 06

RDM2 16

RDM2 21

RDM2 35


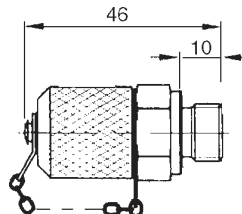
All characteristic curves measured with HLP46 at 50 °C.

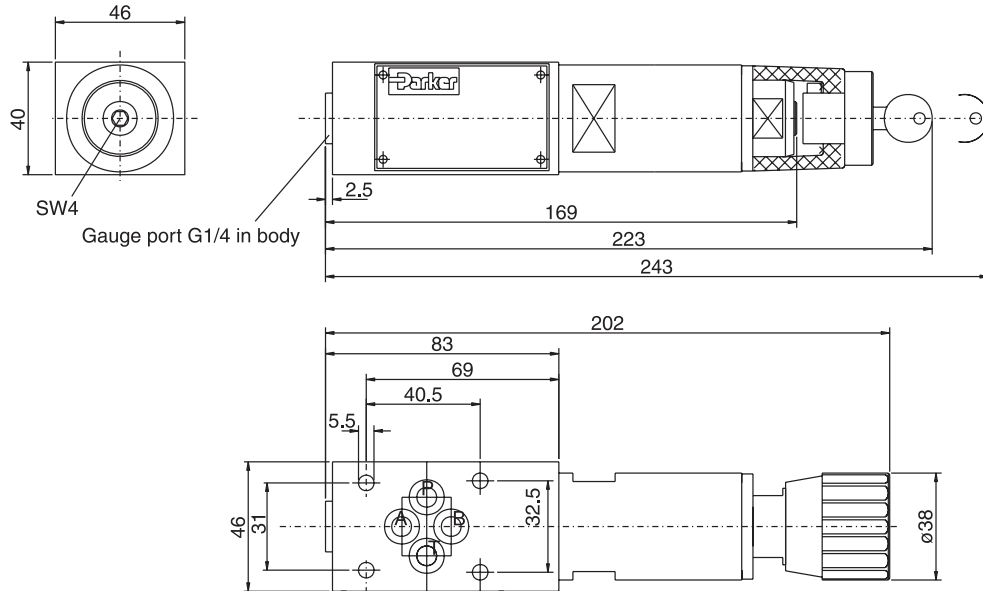
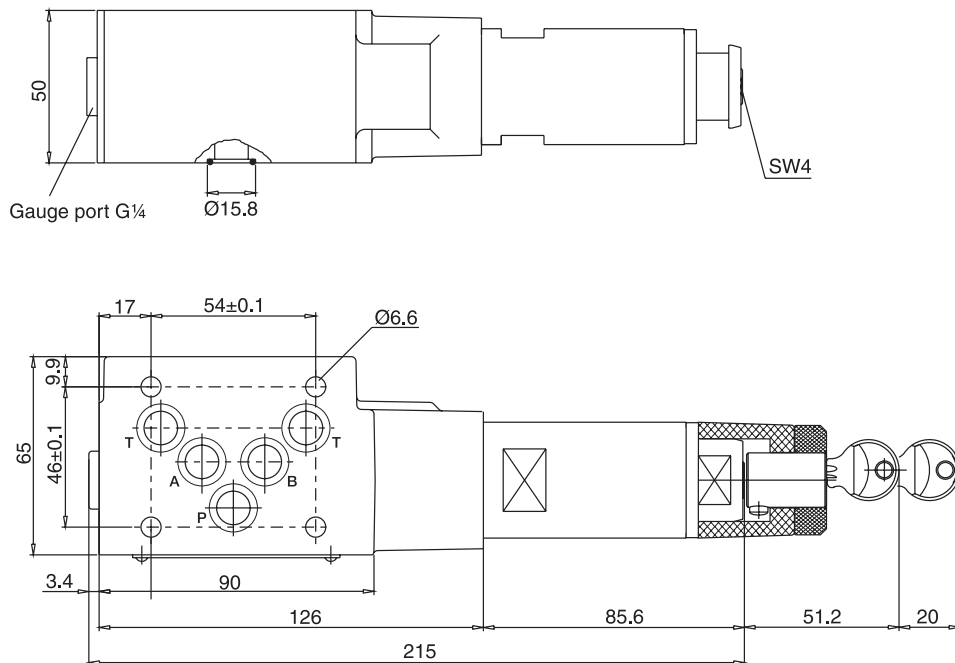
RDM UK.INDD CM 20.01.16

RDM3 01

RDM3 05

RDM3 10

RDM3 21

RDM3 15


All characteristic curves measured with HLP46 at 50 °C.

7
Schematics
RDM*PT

RDM*TT

Gauge port option C


RDM2

7
RDM3

Seal kit order code

Seal	RDM2	RDM3
V	SK-RDM2-V	SK-RDM3-V



RDM UK.INDD CM 20.01.16

