

Catalogue MSG11-3500/UK

**Characteristics / Ordering Code**
**Pilot Operated Check Valve  
Series CPOM**

Pilot operated check valves from the Parker series CPOM are in sandwich design for easy configuration of stack systems. Depending on the function required, one or two pilot operated check valves are arranged in the ports A and/or B. The free flow direction is always from the valve side to the manifold side.

**Function**

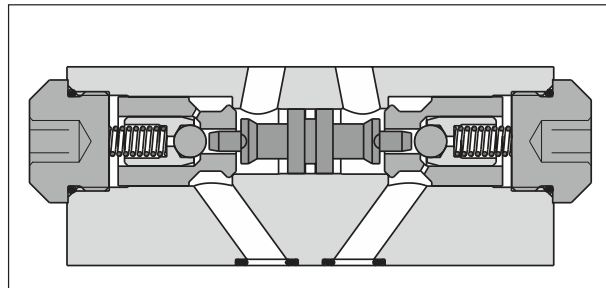
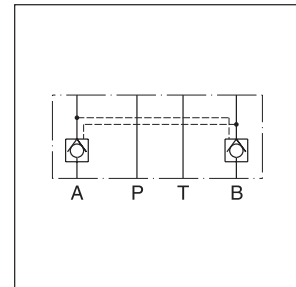
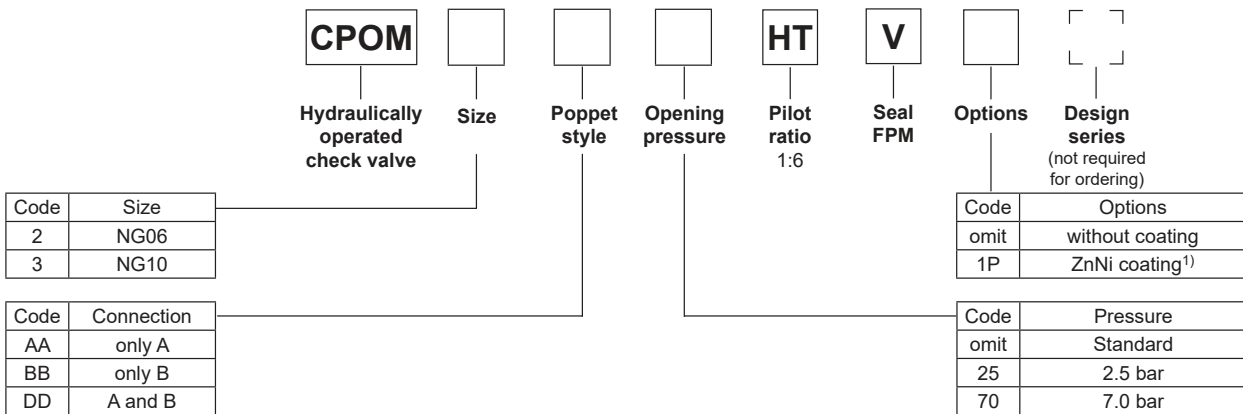
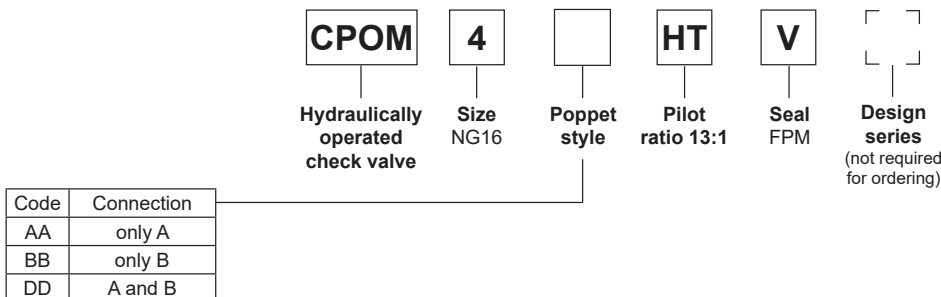
The check valves open when flowing to the consumer side, where the opposing check valve is hydraulically-mechanically pilot operated simultaneously by a control spool, and thus the return flow is enabled from other consumer sides.

**Features**

- The valve bodies of the Parker valve series CPOM are made of steel.
- The valve poppet is precisely guided into the steel sleeve and ensures a good seal on the seat.
- When the valve poppet is open, the large cross-section allows high flow rates at low differential pressure.
- Pre-opening for CPOM\*HT to achieve smooth opening.

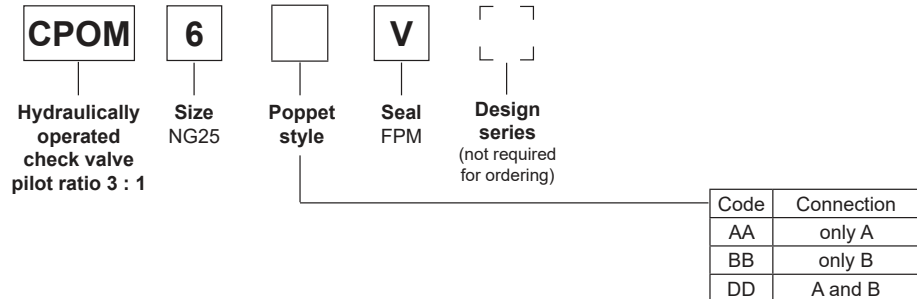


CPOM3


**Ordering code**
**With pre-opening**

**With pre-opening**

<sup>1)</sup> On request.

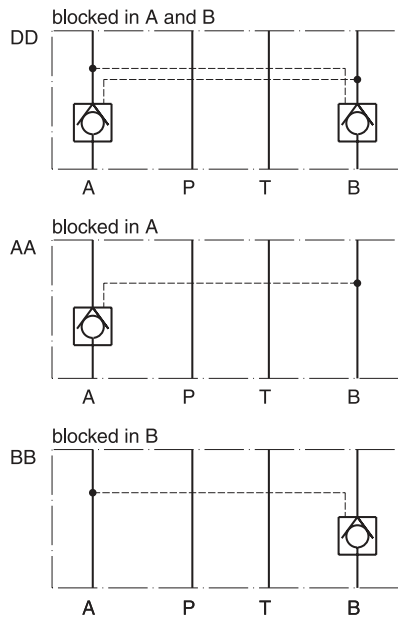
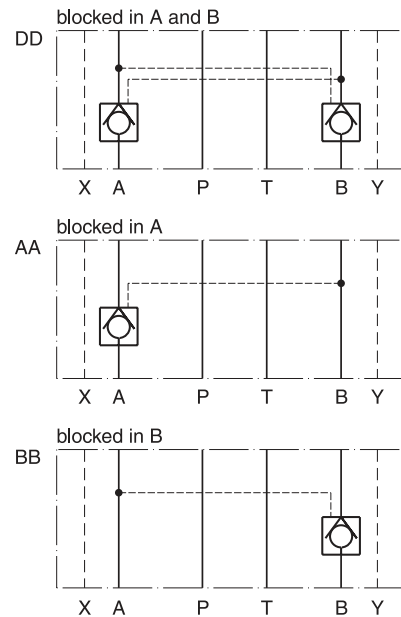
CPOM UK.indd 01.08.22



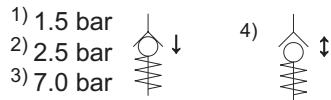
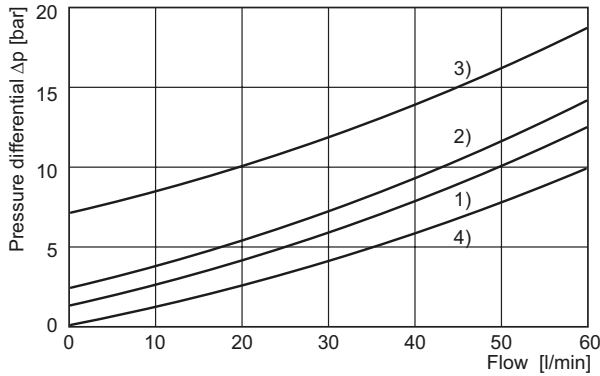
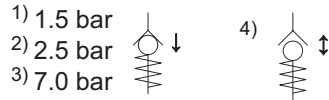
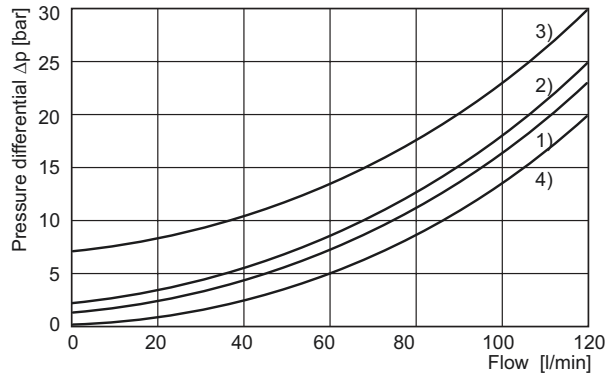
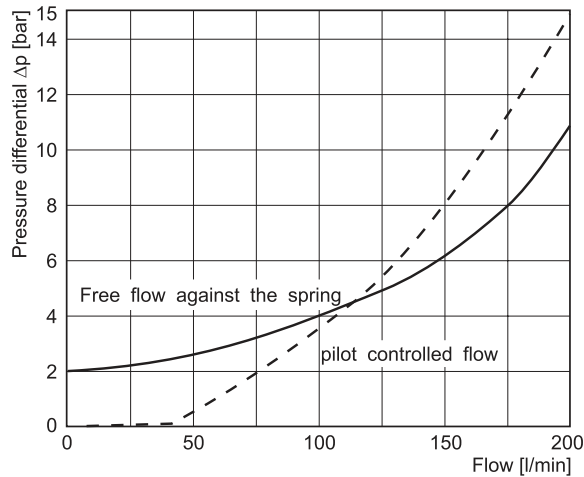
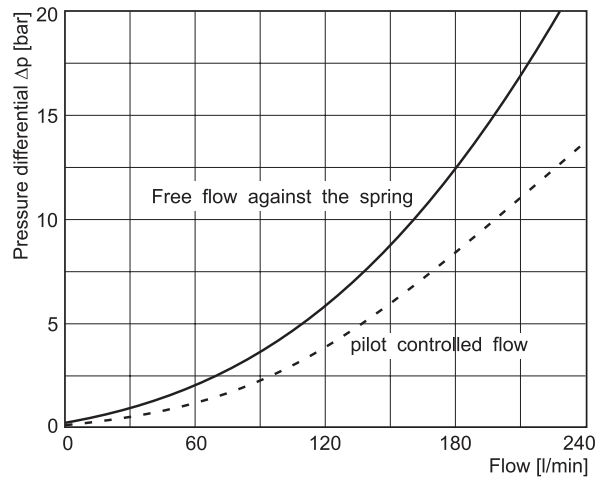
**Without pre-opening**

**Technical data**

General			CPOM2	CPOM3	CPOM4	CPOM6
Series			CPOM2	CPOM3	CPOM4	CPOM6
Nominal size			NG06	NG10	NG16	NG25
Mounting interface			ISO 4401			
Ambient temperature	[°C]		-20...+70			
MTTF <sub>D</sub> value	[years]		150			
Weight	[kg]		1.2	3.1	7.65	9.5
Hydraulic						
Max. operating pressure	[bar]		350	350	350	210
Standard opening pressure	[bar]		1.5	1.5	2.0	0.4
Opening ratio			1 : 6	1 : 6	1 : 13	1 : 3
Fluid			Hydraulic oil according to DIN 51524			
Fluid temperature	[°C]		-20...+70			
Viscosity,	permitted	[cSt] / [mm <sup>2</sup> /s]	20...400			
	recommended	[cSt] / [mm <sup>2</sup> /s]	30...80			
Filtration			ISO 4406; 18/16/13			

7

**Schematics**
**CPOM2 / CPOM3**

**CPOM4 / CPOM6**


CPOM UK.indd 01.08.22

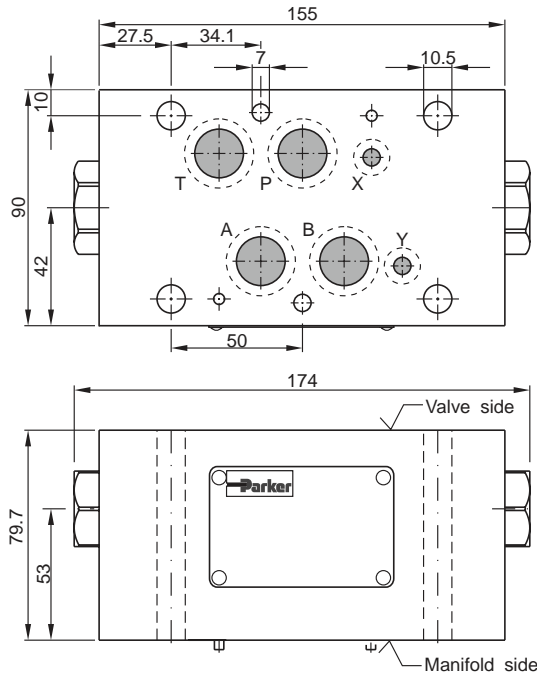
**$\Delta p/Q$  performance curves**
**CPOM2**

**CPOM3**

**CPOM4 (type HT)**

**CPOM6**

**7**

 All characteristic curves measured with oil viscosity 33.0 mm<sup>2</sup>/s (cSt)

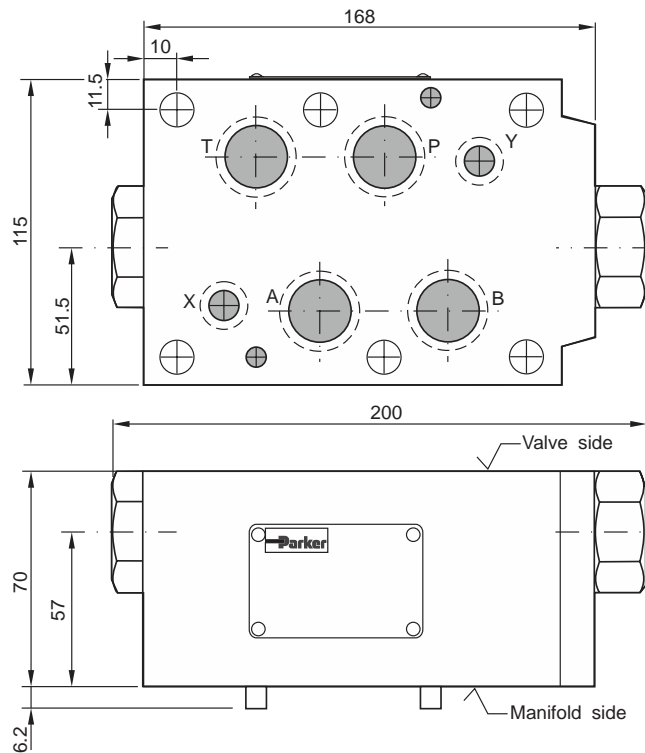
CPOM UK.indd 01.08.22





**CPOM4**


Seal kit CPOM4	
Seal	Order code
V	SK-CPOM4HTV

**CPOM6**


Seal kit CPOM6	
Seal	Order code
V	SK-CPOM6-V-20

**7**
