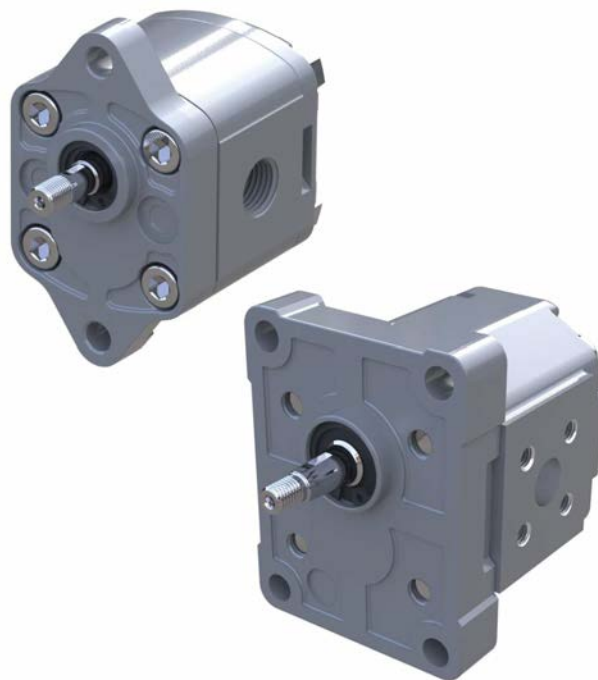


Technical Information

# GearMe

## Aluminum Group 0 and Group 1 Pump



**Revision history***Table of revisions*

<b>Date</b>	<b>Changed</b>	<b>Rev</b>
February 2023	Fixed typo	0203
January 2023	Renamed product	0202
April 2021	Content correction throughout document	0201
October 2019	First edition	0101

**Contents**
**General Information**

Overview.....	5
Features and benefits.....	6

**Group 0**

Design.....	7
Features.....	7
Product Code.....	8
Model code.....	8
A Family.....	8
B Displacement.....	8
C Rotation.....	9
D Project version.....	9
E Mounting flange.....	9
F Drive gear.....	9
G Rear cover.....	9
H Inlet size; I Outlet size.....	9
J Ports positions & Special body.....	10
K Seals.....	10
L Screws.....	10
M Set valve.....	10
N Type mark.....	10
O Mark position.....	10
Dimensions.....	11
TFP0NN-01FA.....	11

**Group 1**

Pump design.....	12
SNP1NN.....	12
SKP1NN.....	13
SKP1IN AND SNP1IN.....	13
Pump displacements.....	14

**General Information**

Technical data.....	15
---------------------	----

**Product Code**

Model code.....	17
A Family.....	17
B Displacement.....	17
C Rotation.....	17
D Project version.....	17
E Mounting flange.....	18
F Drive gear.....	18
G Rear cover.....	18
H Inlet size; I Outlet size.....	18
J Ports positions & Special body.....	19
K Seals.....	19
L Screws.....	20
M Set valve.....	20
N Type mark.....	20
O Mark position.....	20

**Determination of Nominal Pump Sizes**

Determination of nominal pump sizes.....	21
--	----

**System Requirements**

Pressure.....	22
Speed.....	22
Hydraulic fluids.....	23
Temperature and viscosity.....	23
Filtration.....	24

**Contents**

Filters.....	24
Selecting a filter.....	24
Reservoir.....	24
Line sizing.....	25
Pump drive.....	25
Pump drive data form.....	26
Pump Life.....	27
Sound levels.....	27

**Pump Performance**

Pump performance graphs.....	28
------------------------------	----

**Product Options**

Flange, shaft and port configurations.....	31
Shaft options.....	31
Inlet/Outlet port configurations.....	32
Ports.....	33
SNP1IN.....	34
Variant codes for ordering integral relief valves.....	35
Integral relief valve schematic.....	36

**Dimensions**

SNP1NN - 01BA and 01DA.....	37
SKP1NN - 02BB and 02FA.....	38
SNP1NN - 03CA.....	39
SKP1NN - 06GA and 06SA.....	40

## General Information

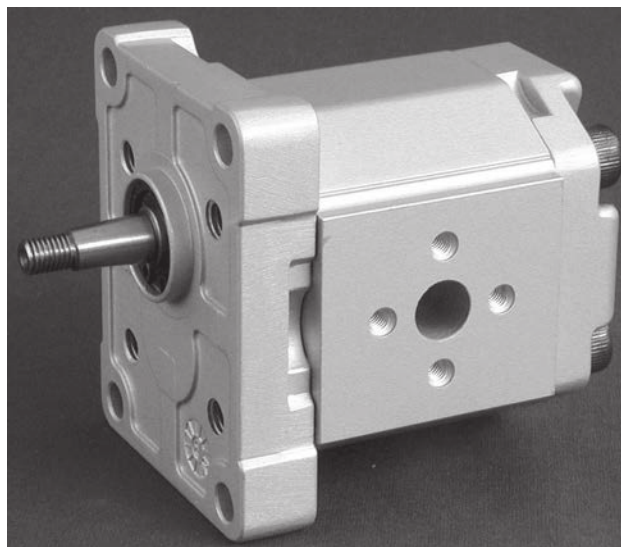
### Overview

The Danfoss Group 0 and Group 1 is a range of peak performance fixed-displacement gear pumps. Constructed of a high strength extruded aluminum body with aluminum cover and flange, all pumps are pressure-balanced for exceptional efficiency. The flexibility of the range, combined with high efficiency and low noise, makes the pumps in this series ideal for a wide range of applications, including: turf care, aerial lifts, material handling, and power packs.

*TFP0NN 01FA*

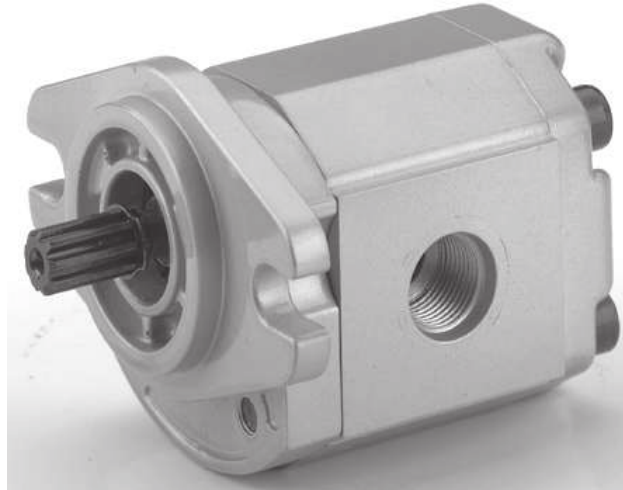


*SNP1NN 01BA*

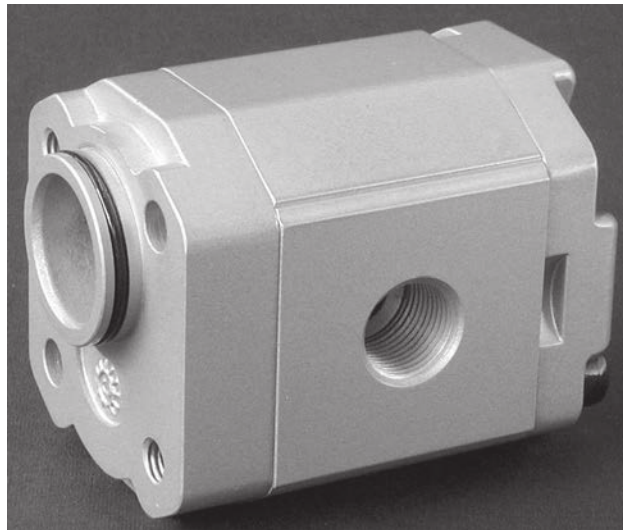


### General Information

SKP1NN 06SA



SNP1NN 03CA



### Features and benefits

#### **Gear pump attributes:**

- Up to 16 displacements from 0,25 to 12 cm<sup>3</sup>/rev [from 0.015 to 0.732 in<sup>3</sup>/rev]
- Continuous pressure rating up to 250 bar [3625 psi]
- Speeds up to 4000 min<sup>-1</sup> (rpm)
- SAE, ISO, and DIN mounting flanges and shafts
- Compact, lightweight, quiet operation
- Group 1 units are available as unidirectional and bi-directional motors, also with integral relief valve
- You can combine groups 1, 2 and 3 to make multi-stage pump

## Group 0

TFP0NN pumps provide flexibility, numerous displacements, features, and shaft/port options. The TFP0NN series has earned an excellent reputation for rugged, dependable performance at continuous pressures and speeds.

*TFP0NN 01FA*



TFP0NN pumps are available in five displacements from 0.25 to 1.27 cm<sup>3</sup>/rev [0.015 to 0.075 in<sup>3</sup>/rev]. Complete information can be found by referring to the specific sections in this technical manual.

## Design

Constructed of high strength aluminum, the TFP0NN rotation is either clockwise or counterclockwise.

## Features

Special features of Group 0 pumps include:

- Wide range of displacements
- Parallel shaft ends
- Standard mounting flange (European, 2-bolt)
- European port options

**Group 0**
*Technical data – Group 0 gear pumps*

		Frame size				
		,25	,45	,57	,76	1,3
<b>Displacement</b>	cm <sup>3</sup> /rev [in <sup>3</sup> /rev]	0.25 [0.015]	0.45 [0.027]	0.57 [0.034]	0.76 [0.045]	1.27 [0.075]
<b>Peak pressure</b>	bar [psi]	200 [2900]	200 [2900]	200 [2900]	200 [2900]	200 [2900]
<b>Rated pressure</b>		180 [2600]	180 [2600]	180 [2600]	180 [2600]	180 [2600]
<b>Minimum pressure at maximum speed</b>		103 [1500]	103 [1500]	103 [1500]	103 [1500]	103 [1500]
<b>Minimum speed at 103 bar [1500 psi]</b>	min <sup>-1</sup> (rpm)	500	500	500	500	500
<b>Maximum speed</b>		8000	8000	8000	7000	5000
<b>Weight</b>	kg [lb]	0.40 [0.88]	0.45 [1.00]	0.46 [1.01]	0.47 [1.03]	0.48 [1.06]
<b>Moment of inertia of rotating components</b>	x 10 <sup>-6</sup> kg·m <sup>2</sup> [x 10 <sup>-6</sup> lb·ft <sup>2</sup> ]	0.425 [10.09]	0.544 [12.91]	0.621 [14.74]	0.737 [17.49]	1.049 [24.89]
<b>Theoretical flow at maximum speed</b>	l/min [US gal/min]	2.00 [0.53]	3.60 [0.95]	4.56 [1.20]	5.32 [1.41]	6.35 [1.68]

$$1 \text{ kg}\cdot\text{m}^2 = 23.68 \text{ lb}\cdot\text{ft}^2$$

For applications requiring parameters beyond those listed above, contact Danfoss.

**Product Code**
**Model code**
**A Family**

A	B	C	D	E	F	G	H	I	J	K	L	M	N	O
• • • • • /														

<b>TFP0NN</b>	Std gear pump
<b>TFR0NN</b>	Reversible pump

**B Displacement**

A	B	C	D	E	F	G	H	I	J	K	L	M	N	O
	• • • /													

<b>,25</b>	Displacement 0,25cc
<b>,45</b>	Displacement 0,45cc
<b>,57</b>	Displacement 0,57cc
<b>,76</b>	Displacement 0,76cc
<b>1,3</b>	Displacement 1,3cc



## Technical Information

**GearMe Aluminum Group 0 and Group 1 Pump**
**Group 0**
**C Rotation**

A	B	C	D	E	F	G	H	I	J	K	L	M	N	O
		•												

<b>L</b>	Left rotation
<b>R</b>	Right rotation
<b>B</b>	Reversible pump

**D Project version**

A	B	C	D	E	F	G	H	I	J	K	L	M	N	O
		•												

<b>N</b>	Std gear version
----------	------------------

**E Mounting flange**

A	B	C	D	E	F	G	H	I	J	K	L	M	N	O
				•	•									

Code	Description (Type of flange • Type of drive gear • Preferred ports for configuration)
<b>01</b>	European 2-bolt flange

**F Drive gear**

A	B	C	D	E	F	G	H	I	J	K	L	M	N	O
					•	•								

<b>CA</b>	Tang drive 5xØ7
<b>FA</b>	Parallel shaft 7,0 mm [0.276 in]

**G Rear cover**

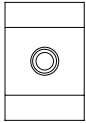
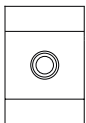
A	B	C	D	E	F	G	H	I	J	K	L	M	N	O
						•	•							

<b>P1</b>	Standard cover for pump
<b>R1</b>	Standard cover for reversible pump

**H Inlet size; I Outlet size**

A	B	C	D	E	F	G	H	I	J	K	L	M	N	O
							•	•	•	•				

**Group 0**

<b>D1</b>	M10x1- Threaded metric port	
<b>D3</b>	M14x1,5- Threaded metric port	
<b>F2</b>	1/4 GAS - Threaded BSP port	

**J Ports positions & Special body**

A	B	C	D	E	F	G	H	I	J	K	L	M	N	O	
	/									•	•	/			

<b>NN</b>	Std position from catalog
-----------	---------------------------

**K Seals**

A	B	C	D	E	F	G	H	I	J	K	L	M	N	O
	/									•	/			

<b>N</b>	Standard Buna seal
----------	--------------------

**L Screws**

A	B	C	D	E	F	G	H	I	J	K	L	M	N	O
	/										•	/		

<b>N</b>	Std screws
----------	------------

**M Set valve**

A	B	C	D	E	F	G	H	I	J	K	L	M	N	O
	/										/	•	•	•

<b>NNN</b>	No valve
------------	----------

**N Type mark**

A	B	C	D	E	F	G	H	I	J	K	L	M	N	O
	/										/		•	

<b>N</b>	Standard Danfoss Marking
----------	--------------------------

<b>A</b>	Standard Danfoss Marking+Customer Code
----------	--

**O Mark position**

A	B	C	D	E	F	G	H	I	J	K	L	M	N	O
	/										/			•

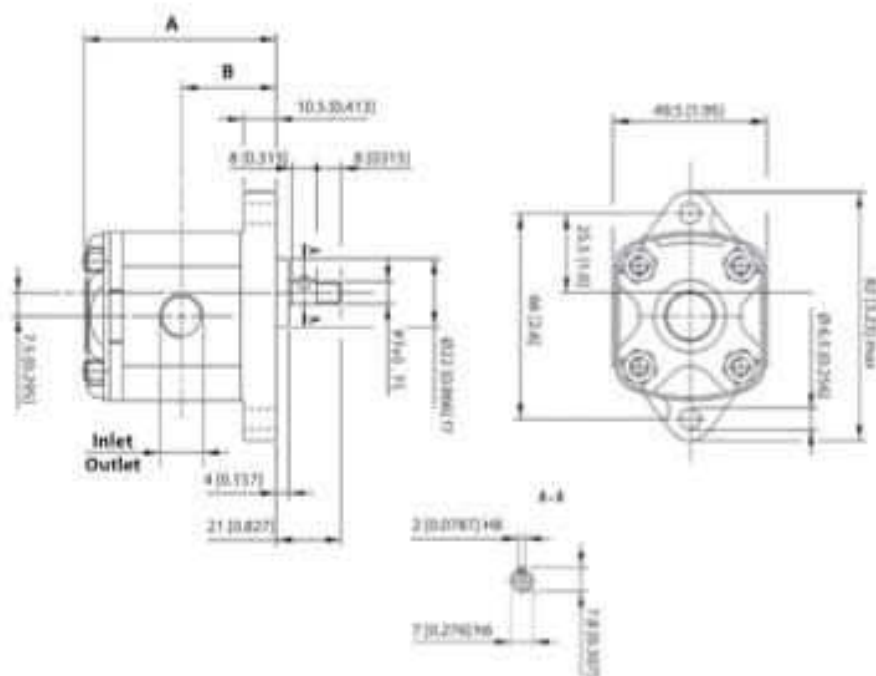
## Technical Information

**GearMe Aluminum Group 0 and Group 1 Pump**
**Group 0**

<b>N</b>	Std Marking position (on top)
<b>A</b>	Special Marking position on the bottom

**Dimensions**
**TFP0NN-01FA**

Available 01FA configuration only.


*TFP0NN dimensions*

Frame size		,25	,45	,57	,76	1,3
<b>Dimension</b>	<b>A</b>	53.5 [2.10]	55.0 [2.16]	56.0 [2.20]	61.5 [2.42]	61.5 [2.42]
	<b>B</b>	26.5 [1.04]	27.3 [1.07]	27.8 [1.09]	30.5 [1.20]	30.5 [1.20]
<b>Inlet/Outlet</b>		M10 x 1				

*Model code examples and maximum shaft torque*

Flange/drive gear	Model code example	Maximum shaft torque
<b>01FA</b>	TFP0NN/,57RN01FAP1D1D1NNNN/NNNNN	4.5 N·m [39.8 lb·in]

 For further details on ordering, see [Product Code](#) on page 8.

Technical Information

**GearMe Aluminum Group 0 and Group 1 Pump**

---

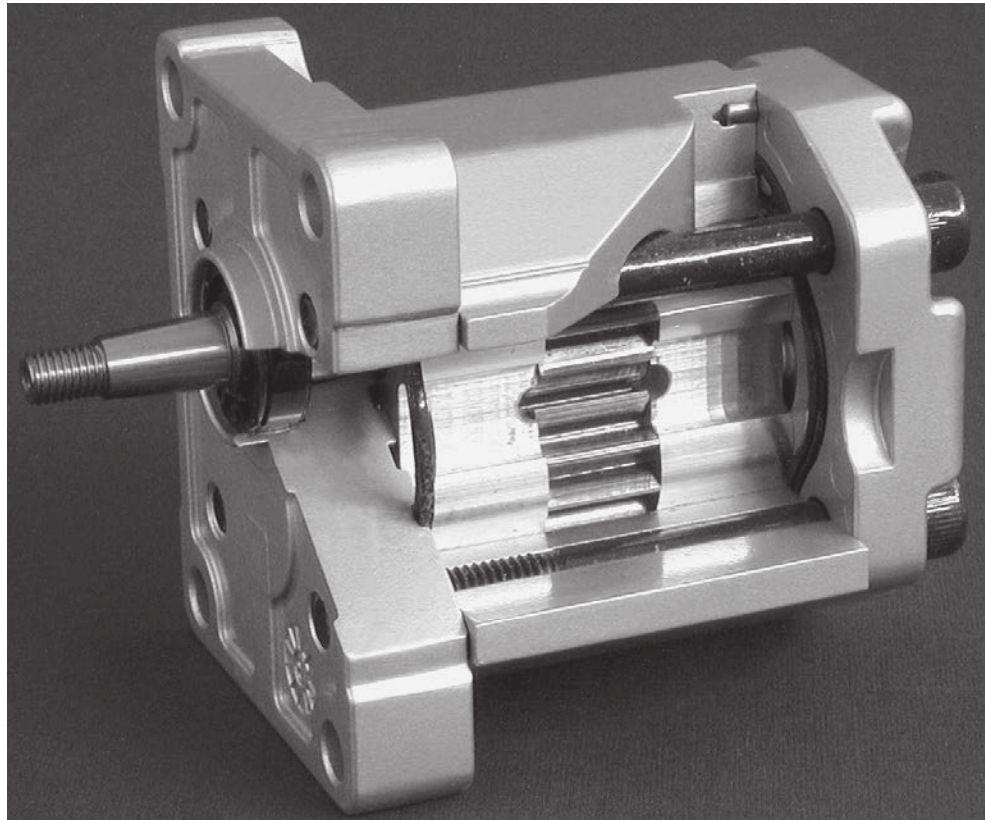
**Group 1**

**Pump design**

**SNP1NN**

SNP1NN pumps only include European flange and shaft configurations (code 01BA, 01DA, and 03CA).

*SNP1NN 01BA (cut away)*



## Group 1

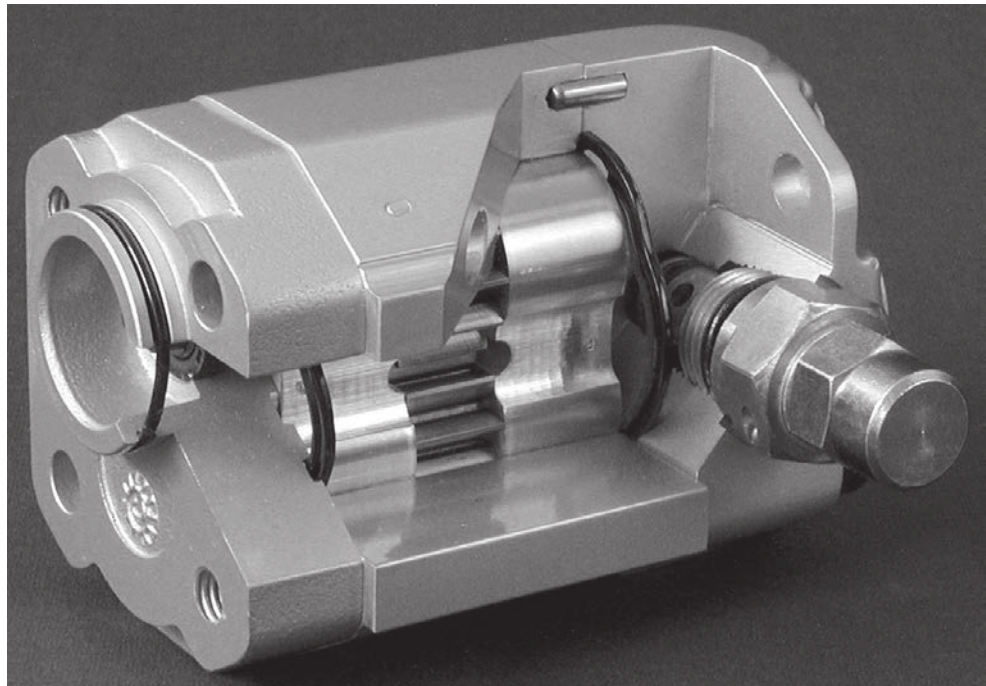
### SKP1NN

SKP1NN has a larger diameter shaft than the SNP1NN. It spans the complete displacement range at higher pressures than the SNP1IN and the SNP1NN. Configurations include European and SAE flanges and shafts (code 02BB, 02FA, 06SA, and 06GA).

### SKP1IN AND SNP1IN

Danfoss offers an optional integral relief valve integrated in the rear cover. It is drained internally and directs all flow from the pump outlet to the inlet when the outlet pressure reaches the valve setting. SNI1 pumps only include European flange and shaft configurations (code 01BA, 01DA, and 03CA).

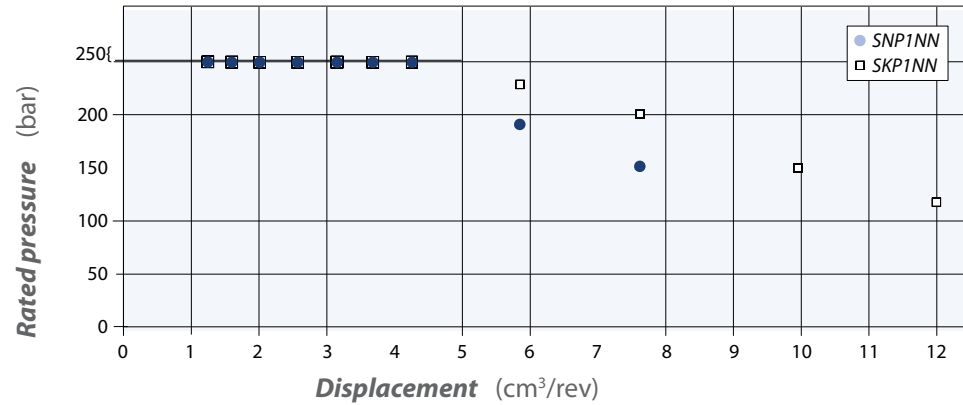
*SNP1IN 03CA (cut away)*



Technical Information

**GearMe Aluminum Group 0 and Group 1 Pump**
**Group 1**
**Pump displacements**

Quick reference chart for pump displacements vs. rated pressure

 Quick reference chart for *pump* displacements vs. rated pressure


Technical Information  
**GearMe Aluminum Group 0 and Group 1 Pump**
**General Information**
**Technical data**

		Frame size										
		1,2	1,7	2,2	2,6	3,2	3,8	4,3	6,0	7,8	010	012
<b>Displacement</b>	cm <sup>3</sup> /rev	1.18	1.57	2.09	2.62	3.14	3.66	4.19	5.89	7.59	9.94	12.00
	[in <sup>3</sup> /rev]	[0.072]	[0.096]	[0.128]	[0.160]	[0.192]	[0.223]	[0.256]	[0.359]	[0.463]	[0.607]	[0.732]
<b>SNP1NN</b>												
<b>Peak pressure</b>	bar	270	270	270	270	270	270	270	210	170		
	[psi]	[3915]	[3915]	[3915]	[3915]	[3915]	[3915]	[3915]	[3045]	[2465]		
<b>Rated pressure</b>	bar	250	250	250	250	250	250	250	190	150		
	[psi]	[3625]	[3625]	[3625]	[3625]	[3625]	[3625]	[3625]	[2760]	[2175]		
<b>Minimum speed at 0-150 bar</b>	min <sup>-1</sup>	800	800	600	600	600	600	500	500	500	-	-
	(rpm)											
<b>Min. speed at 150 bar to rated pressure</b>	min <sup>-1</sup>	1200	1200	1000	1000	1000	1000	800	800	800		
	(rpm)											
<b>Maximum speed</b>	min <sup>-1</sup>	4000	4000	4000	4000	4000	4000	3000	3000	3000		
	(rpm)											
<b>SKP1NN*</b>												
<b>Peak pressure</b>	bar	270	270	270	270	270	270	270	250	220	170	140
	[psi]	[3915]	[3915]	[3915]	[3915]	[3915]	[3915]	[3915]	[3625]	[3190]	[2465]	[2030]
<b>Rated pressure</b>	bar	250	250	250	250	250	250	250	230	200	150	120
	[psi]	[3625]	[3625]	[3625]	[3625]	[3625]	[3625]	[3625]	[3335]	[2900]	[2175]	[1740]
<b>Minimum speed at 0-150 bar</b>	min <sup>-1</sup>	800	800	800	800	800	800	600	600	600	600	600
	(rpm)											
<b>Min. speed at 150 bar to rated pressure</b>	min <sup>-1</sup>	1200	1200	1000	1000	1000	1000	1000	800	800	800	-
	(rpm)											
<b>Maximum speed</b>	min <sup>-1</sup>	4000	4000	4000	4000	4000	4000	3000	3000	3000	2000	2000
	(rpm)											
<b>All (SNP1NN, SKP1NN)</b>												
<b>Weight</b>	kg [lb]	1.02	1.05	1.09	1.11	1.14	1.18	1.20	1.30	1.39	1.55	1.65
		[2.26]	[2.31]	[2.40]	[2.45]	[2.51]	[2.60]	[2.65]	[2.87]	[3.06]	[3.42]	[3.64]
<b>Moment of inertia of rotating components</b>	x 10 <sup>-6</sup> kg·m <sup>2</sup>	3.2	3.7	4.4	5.1	5.7	6.4	7.1	9.3	11.4	14.6	17.1
	[x 10 <sup>-6</sup> lb·ft <sup>2</sup> ]	[77]	[89]	[105]	[120]	[136]	[152]	[168]	[220]	[271]	[347]	[407]
<b>Theoretical flow at maximum speed</b>	l/min	4.72	6.28	8.36	10.48	12.56	14.64	12.57	17.67	22.77	19.88	24
	[US gal/min]	[1.25]	[1.66]	[2.21]	[2.77]	[3.32]	[3.87]	[3.32]	[4.67]	[6.02]	[5.25]	[6.34]

\* SKP1NN is a special version of the SNP1NN. It is designed to accommodate an SAE 9T 20/40 DP tooth splined shaft for higher torque applications.

$$1 \text{ kg}\cdot\text{m}^2 = 23.68 \text{ lb}\cdot\text{ft}^2$$



Hydraulik · Automation

*Danfoss*

Technical Information

## GearMe Aluminum Group 0 and Group 1 Pump

---

### General Information

**! Caution**

---

The rated and peak pressure mentioned are for pumps with flanged ports only. When threaded ports are required a derated performance has to be considered. To verify the compliance of an high pressure application with a threaded ports pump apply to a Danfoss representative.

---



## Technical Information

**GearMe Aluminum Group 0 and Group 1 Pump**
**Product Code**
**Model code**
**A Family**

A							B	C	D	E	F	G	H	I	J	K	L	M	N	O	
•	•	•	•	•	•	•	/											/			

<b>SNB1NN</b>	Gear pump with inlet port on cover and outlet port on flange
<b>SNP1NN</b>	Standard gear pump
<b>SNC1NN</b>	Gear pump with inlet and outlet ports on rear cover
<b>SNP1IN</b>	Gear pump with internal drain relief valve
<b>SKP1NN</b>	High torque gear pump
<b>SKP1IN</b>	High torque gear pump with internal drain relief valve

**B Displacement**

A							B	C	D	E	F	G	H	I	J	K	L	M	N	O	
							/	•	•	•								/			

<b>1,2</b>	1,18 cc
<b>1,7</b>	1,57 cc
<b>2,2</b>	2,09 cc
<b>2,6</b>	2,62 cc
<b>3,2</b>	3,14 cc
<b>3,8</b>	3,66 cc
<b>4,3</b>	4,19 cc
<b>6,0</b>	5,89 cc
<b>7,8</b>	7,59 cc
<b>010</b>	9,94 cc
<b>012</b>	12,00 cc

**C Rotation**

A							B	C	D	E	F	G	H	I	J	K	L	M	N	O	
							/			•								/			

<b>L</b>	Left rotation
<b>R</b>	Right rotation

**D Project version**

A							B	C	D	E	F	G	H	I	J	K	L	M	N	O	
							/			•								/			

<b>N</b>	Standard gear pump
----------	--------------------

**Product Code**
**E Mounting flange**

A	B	C	D	E	F	G	H	I	J	K	L	M	N	O
				•	•									

Code	Description (Type of flange • Type of drive gear • Preferred ports for configuration)
01	pilot Ø25,4+4 holes
02	pilot Ø30+4 holes
03	pilot Ø32+O-ring+2 holes through body
04	pilot Ø32+2 holes through body
06	SAE A-A pilot Ø50,8+ 2 holes

**F Drive gear**

A	B	C	D	E	F	G	H	I	J	K	L	M	N	O
					•	•								

AA	Taper 1:5-M6-Key 2
BA	Taper 1:8-M7-Key 2,41
BB	Taper 1:8-M10x1-Key 3
CA	Tang 5x Ø10
CE	Tang 6,63x Ø11 - for SKP1xN
CM	Tang 5x Ø10-type 03 + w/o coupling
DA	SplinedZ15-m0,75-alfa 30°-L14 - for SNP1xx
DB	SplinedZ15-m0,75-alfa 30°-L14 - for SKP1xx
FA	Parallel Ø12-Thread M10x1-Key 3
GA	Parallel Ø12,7-Key 3.2
SA	SAE spline J498-9T-20/40

**G Rear cover**

A	B	C	D	E	F	G	H	I	J	K	L	M	N	O
						•	•							

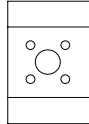
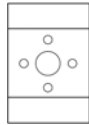
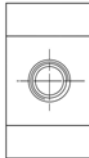
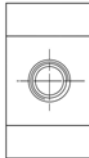
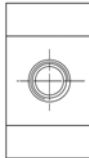

03	Cover 03 (used with flange 03-04)
08	Cover 08 with Inlet port 3/8" Gas
C1	Cover pump with front GAS Thread Inlet 3/8 ; Outlet 3/8
I1	Cover pump with relief valve
I3	Cover 03 with relief valve (used with flange 03)
P1	Std Cover pump

**H Inlet size; I Outlet size**

A	B	C	D	E	F	G	H	I	J	K	L	M	N	O
							•	•	•	•				

## Technical Information

**GearMe Aluminum Group 0 and Group 1 Pump**
**Product Code**

<b>NN</b>	Without inlet	
<b>B1</b>	8x30xM6	
<b>B2</b>	13x30xM6	
<b>C1</b>	8x26xM5	
<b>C2</b>	12x26xM5	
<b>C3</b>	13, 5x30xM6	
<b>D3</b>	M14x1,5	
<b>D5</b>	M18x1,5	
<b>D7</b>	M22x1,5	
<b>E3</b>	9/16-18UNF	
<b>E4</b>	¾-16UNF	
<b>E5</b>	7/8-14UNF	
<b>F2</b>	¼ GAS	
<b>F3</b>	3/8 GAS	
<b>F4</b>	½ GAS	
<b>H2</b>	10xM12x1,5-ISO6149	
<b>H4</b>	12xM16x1,5-ISO6149	
<b>H5</b>	12xM18x 1, 5-ISO6149	
<b>H7</b>	13, 5xM22x 1, 5-ISO6149	

**J Ports positions & Special body**

A	B	C	D	E	F	G	H	I	J	K	L	M	N	O
									•	•				

<b>NN</b>	Std from catalogue
-----------	--------------------

**K Seals**

A	B	C	D	E	F	G	H	I	J	K	L	M	N	O
										•				

<b>N</b>	Standard NBR seal
<b>A</b>	Without shaft seal
<b>B</b>	With VITON seals

## Technical Information

**GearMe Aluminum Group 0 and Group 1 Pump**
**Product Code**
**L Screws**

A				B	C	D	E	F	G	H	I	J	K	L	M	N	O	
				/											•	/		

<b>N</b>	Std screws
<b>B</b>	GEOMET screws

**M Set valve**

A				B	C	D	E	F	G	H	I	J	K	L	M	N	O	
				/											/	•	•	•

<b>NNN</b>	No valve
<b>V*</b>	not defined-pressure no setting :oil ISO VG68-45°

\* For details see *Variant codes for ordering integral relief valves* on page 35.

**N Type mark**

A				B	C	D	E	F	G	H	I	J	K	L	M	N	O
				/											/		•

<b>N</b>	Standard Danfoss Marking
<b>A</b>	Standard Danfoss Marking+Customer Code
<b>Z</b>	Without Marking

**O Mark position**

A				B	C	D	E	F	G	H	I	J	K	L	M	N	O
				/											/		•

<b>N</b>	Std Marking position (on top)
<b>A</b>	Special Marking position on the bottom

**Determination of Nominal Pump Sizes**
**Determination of nominal pump sizes**

Use these formula to determine the nominal pump size for a specific application:

**Based on SI units**
**Based on US units**

$$\text{Output flow: } Q = \frac{Vg \cdot n \cdot \eta_v}{1000} \quad \text{l/min}$$

$$Q = \frac{Vg \cdot n \cdot \eta_v}{231} \quad \text{[US gal/min]}$$

$$\text{Input torque: } M = \frac{Vg \cdot \Delta p}{20 \cdot \pi \cdot \eta_m} \quad \text{N}\cdot\text{m}$$

$$M = \frac{Vg \cdot \Delta p}{2 \cdot \pi \cdot \eta_m} \quad \text{[lbf}\cdot\text{in]}$$

$$\text{Input power: } P = \frac{M \cdot n}{9550} = \frac{Q \cdot \Delta p}{600 \cdot \eta_t} \quad \text{kW}$$

$$P = \frac{M \cdot n}{63.025} = \frac{Q \cdot \Delta p}{1714 \cdot \eta_t} \quad \text{[hp]}$$

<b>Vg =</b>	Displacement per rev.	cm <sup>3</sup> /rev [in <sup>3</sup> /rev]
<b>pHD =</b>	Outlet pressure	bar [psi]
<b>pND =</b>	Inlet pressure	bar [psi]
<b>Δp =</b>	pHD – pND	bar [psi]
<b>n =</b>	Speed	min <sup>-1</sup> (rpm)
<b>η<sub>v</sub> =</b>	Volumetric efficiency	
<b>η<sub>m</sub> =</b>	Mechanical (torque) efficiency	
<b>η<sub>t</sub> =</b>	Overall efficiency (η <sub>v</sub> · η <sub>m</sub> )	

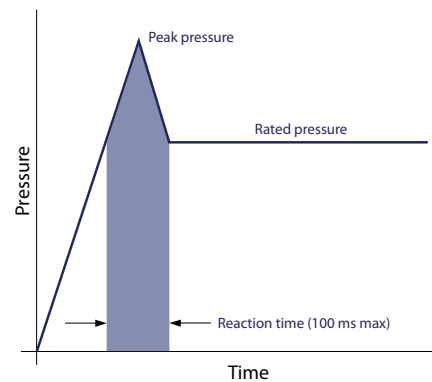
## System Requirements

### Pressure

The inlet vacuum must be controlled in order to realize expected pump life and performance. The system design must meet inlet pressure requirements during all modes of operation. Expect lower inlet pressures during cold start. It should improve quickly as the fluid warms.

<b>Max. continuous vacuum</b>	bar abs. [in. Hg]	0.8 [23.6]
<b>Max. intermittent vacuum</b>		0.6 [17.7]
<b>Max. pressure</b>		4.0 [118.1]

**Peak pressure** is the highest intermittent pressure allowed. The relief valve overshoot (reaction time) determines peak pressure. It is assumed to occur for less than 100 ms. The accompanying illustration shows peak pressure in relation to rated pressure and reaction time (100 ms maximum).



**Rated pressure** is the average, regularly occurring, operating pressure that should yield satisfactory product life. The maximum machine load demand determines rated pressure. For all systems, the load should move below this pressure.

**System pressure** is the differential of pressure between the outlet and inlet ports. It is a dominant operating variable affecting hydraulic unit life. High system pressure, resulting from high load, reduces expected life. System pressure must remain at, or below, rated pressure during normal operation to achieve expected life.

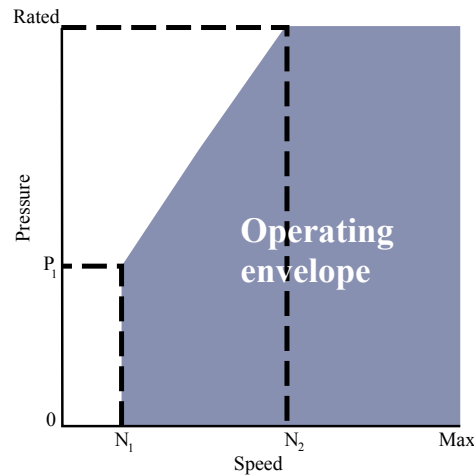
### Speed

**Maximum speed** is the limit recommended by Danfoss for a particular gear pump when operating at rated pressure. It is the highest speed at which normal life can be expected.

The lower limit of operating speed is the **minimum speed**. It is the lowest speed at which normal life can be expected. The minimum speed increases as operating pressure increases. When operating under higher pressures, a higher minimum speed must be maintained, as illustrated here.

## System Requirements

Speed versus pressure



Where:

$N_1$  = Minimum speed at 100 bar

$N_2$  = Minimum speed at 180 bar

## Hydraulic fluids

Ratings and data for SNP1NN, and SKP1NN gear pumps are based on operating with premium hydraulic fluids containing oxidation, rust, and foam inhibitors. These fluids must possess good thermal and hydrolytic stability to prevent wear, erosion, and corrosion of internal components. They include:

- Hydraulic fluids following DIN 51524, part 2 (HLP) and part 3 (HVLP) specifications
- API CD engine oils conforming to SAE J183
- M2C33F or G automatic transmission fluids
- Certain agricultural tractor fluids

Use only clean fluid in the pump and hydraulic circuit.

### Caution

Never mix hydraulic fluids.

## Temperature and viscosity

**Temperature and viscosity requirements** must be concurrently satisfied. Use petroleum / mineral-based fluids.

High temperature limits apply at the inlet port to the pump. The pump should run at or below the maximum continuous temperature. The peak temperature is based on material properties. Don't exceed it.

Cold oil, generally, doesn't affect the durability of pump components. It may affect the ability of oil to flow and transmit power. For this reason, keep the temperature at 16 °C [60 °F] above the pour point of the hydraulic fluid.

Minimum (cold start) temperature relates to the physical properties of component materials.

Minimum viscosity occurs only during brief occasions of maximum ambient temperature and severe duty cycle operation. You will encounter maximum viscosity only at cold start. During this condition, limit speeds until the system warms up. Size heat exchangers to keep the fluid within these limits. Test regularly to verify that these temperatures and viscosity limits aren't exceeded. For maximum unit efficiency and bearing life, keep the fluid viscosity in the recommended viscosity range.

## System Requirements

### Fluid viscosity

<b>Maximum (cold start)</b>	mm <sup>2</sup> /s [SUS]	1000 [1600]
<b>Recommended range</b>		12-60 [66-290]
<b>Minimum</b>		10 [60]

### Temperature (with standard NBR seals)

<b>Minimum (cold start)</b>	°C [°F]	-20 [-4]
<b>Maximum continuous</b>		80 [176]
<b>Peak (intermittent)</b>		90 [194]

## Filtration

### Filters

Use a filter that conforms to Class 22/18/13 of ISO 4406 (or better). It may be on the pump outlet (pressure filtration), inlet (suction filtration), or reservoir return (return-line filtration).

### Selecting a filter

When selecting a filter, please consider:

- contaminant ingress rate (determined by factors such as the number of actuators used in the system)
- generation of contaminants in the system
- required fluid cleanliness
- desired maintenance interval
- filtration requirements of other system components

Measure filter efficiency with a Beta ratio ( $\beta_x$ ). For:

- suction filtration, with controlled reservoir ingress, use a  $\beta_{35-45} = 75$  filter
- return or pressure filtration, use a pressure filtration with an efficiency of  $\beta_{10} = 75$

$\beta_x$  ratio is a measure of filter efficiency defined by ISO 4572. It is the ratio of the number of particles greater than a given diameter ("x" in microns) upstream of the filter to the number of these particles downstream of the filter.

### Fluid cleanliness level and $\beta_x$ ratio

<b>Fluid cleanliness level (per ISO 4406)</b>	Class 22/18/13 or better
<b><math>\beta_x</math> ratio (suction filtration)</b>	$\beta_{35-45} = 75$ and $\beta_{10} = 2$
<b><math>\beta_x</math> ratio (pressure or return filtration)</b>	$\beta_{10} = 75$
<b>Recommended inlet screen size</b>	100-125 $\mu\text{m}$ [0.004-0.005 in]

The filtration requirements for each system are unique. Evaluate filtration system capacity by monitoring and testing prototypes.

### Reservoir

The **reservoir** provides clean fluid, dissipates heat, removes entrained air, and allows fluid volume changes associated with fluid expansion and cylinder differential volumes. A correctly sized reservoir accommodates maximum volume changes during all system operating modes. It promotes deaeration of the fluid as it passes through, and accommodates a fluid dwell-time between 60 and 180 seconds, allowing entrained air to escape.



## System Requirements

**Minimum reservoir capacity** depends on the volume required to cool and hold the oil from all retracted cylinders, allowing for expansion due to temperature changes. A fluid volume of 1 to 3 times the pump output flow (per minute) is satisfactory. The minimum reservoir capacity is 125% of the fluid volume.

Install the suction line above the bottom of the reservoir to take advantage of gravity separation and prevent large foreign particles from entering the line. Cover the line with a 100-125 micron screen. The pump should be below the lowest expected fluid level. Put the return-line below the lowest expected fluid level to allow discharge into the reservoir for maximum dwell and efficient deaeration. A baffle (or baffles) between the return and suction lines promotes deaeration and reduces fluid surges.

## Line sizing

Choose pipe sizes that accommodate minimum fluid velocity to reduce system noise, pressure drops, and overheating. This maximizes system life and performance.

Design inlet piping that maintains continuous pump inlet pressure above 0.8 bar absolute during normal operation. The line velocity should not exceed the values in this table:

### Maximum line velocity

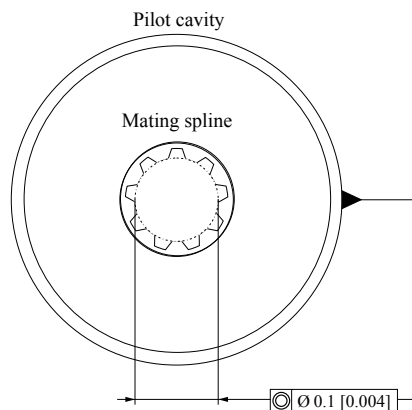
<b>Inlet</b>	m/s [ft/sec]	2.5 [8.2]
<b>Outlet</b>		5.0 [16.4]
<b>Return</b>		3.0 [9.8]

Most systems use hydraulic oil containing 10% dissolved air by volume. Under high inlet vacuum conditions the oil releases bubbles. They collapse when subjected to pressure, resulting in cavitation, causing adjacent metal surfaces to erode. **Over-aeration** is the result of air leaks on the inlet side of the pump, and flow-line restrictions. These include inadequate pipe sizes, sharp bends, or elbow fittings, causing a reduction of flow line cross sectional area. This problem will not occur if inlet vacuum and rated speed requirements are maintained, and reservoir size and location are adequate.

## Pump drive

Shaft options for Group 1 gear pumps include tapered, tang, splined, or parallel shafts. They are suitable for a wide range of direct and indirect drive applications for radial and thrust loads.

**Plug-in drives**, acceptable only with a splined shaft, can impose severe radial loads when the mating spline is rigidly supported. Increasing spline clearance does not alleviate this condition.



Use **plug-in drives** if the concentricity between the mating spline and pilot diameter is within 0.1 mm [0.004 in]. Lubricate the drive by flooding it with oil. A 3-piece coupling minimizes radial or thrust shaft loads.

**System Requirements**
 **Caution**

In order to avoid spline shaft damages it is recommended to use carburized and hardened steel couplings with 80-82 HRA surface hardness.

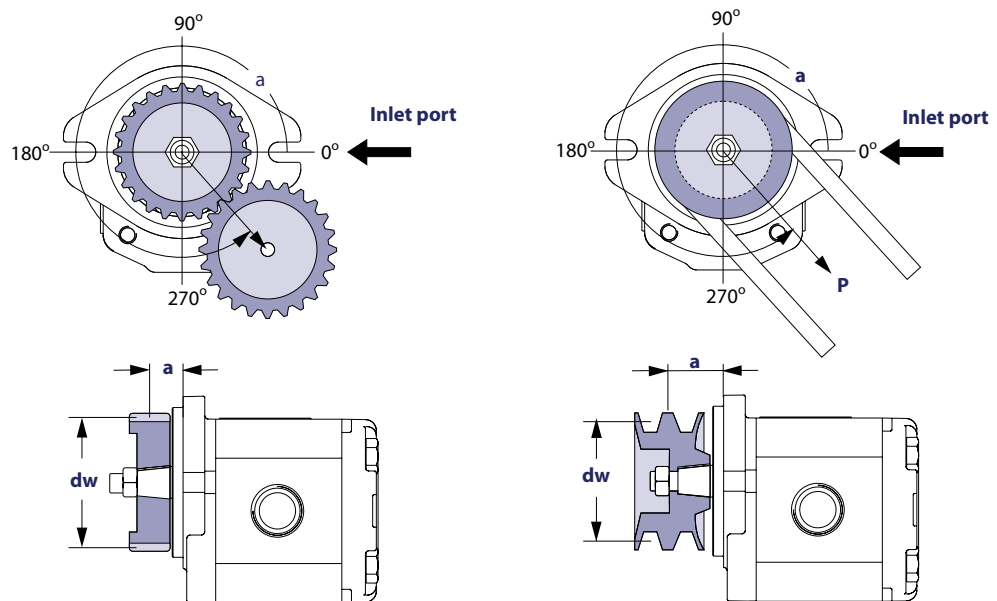
Allowable **radial shaft loads** are a function of the load position, load orientation, and operating pressure of the hydraulic pump. All external shaft loads have an effect on bearing life, and may affect pump performance.

In applications where external shaft loads can't be avoided, minimize the impact on the pump by optimizing the orientation and magnitude of the load. Use a tapered input shaft; don't use splined shafts for belt or gear drive applications. A spring-loaded belt tension-device is recommended for belt drive applications to avoid excessive tension. Avoid thrust loads in either direction.

**Pump drive data form**

Contact Danfoss if continuously applied external radial or thrust loads occur. Fill out this page and send the complete form to your Danfoss representative for an assistance in applying pumps with belt or gear drive. This illustration shows a pump with counterclockwise orientation:

*Optimal radial load position*



*Application data*

Item	Value	Unit
Pump displacement		cm <sup>3</sup> /rev [in <sup>3</sup> /rev]
Rated system pressure		bar psi
Relief valve setting		
Pump shaft rotation		left right
Pump minimum speed		min <sup>-1</sup> (rpm)
Pump maximum speed		
Drive gear helix angle (gear drive only)		degree
Belt type (gear drive only)		V notch
Belt tension (gear drive only)	<b>P</b>	N lbf

## System Requirements

*Application data (continued)*

Item		Value	Unit
Angular orientation of gear or belt to inlet port	<b>α</b>		degree
Pitch diameter of gear or pulley	<b>dw</b>		mm in
Distance from flange to center of gear or pulley	<b>a</b>		

## Pump Life

Pump life is a function of speed, system pressure, and other system parameters (such as fluid quality and cleanliness).

All Danfoss gear pumps use hydrodynamic journal bearings that have an oil film maintained between the gear/shaft and bearing surfaces at all times. If the oil film is sufficiently sustained through proper system maintenance and operating within recommended limits, long life can be expected.

[B<sub>10</sub> life expectancy number is generally associated with rolling element bearings. It does not exist for hydrodynamic bearings.](#)

High pressure, resulting from high loads, impacts pump life. When submitting an application for review, provide machine duty cycle data that includes percentages of time at various loads and speeds. We strongly recommend a prototype testing program to verify operating parameters and their impact on life expectancy before finalizing any system design.

## Sound levels

Noise is unwanted sound. Fluid power systems create noise. There are many techniques available to minimize noise. Understanding how it's generated and transmitted is necessary to apply these methods effectively.

Noise energy is transmitted as fluid borne noise (pressure ripple) or structure borne noise. **Pressure ripple** is the result of the number of pumping elements (gear teeth) delivering oil to the outlet and the pump's ability to gradually change the volume of each pumping element from low to high pressure. Pressure ripple is affected by the compressibility of the oil as each pumping element discharges into the outlet of the pump. Pressure pulsations travel along hydraulic lines at the speed of sound (about 1400 m/s in oil) until there is a change in the system (as with an elbow fitting). Thus, the pressure pulsation amplitude varies with overall line length and position.

**Structure borne noise** may be transmitted wherever the pump casing is connected to the rest of the system.

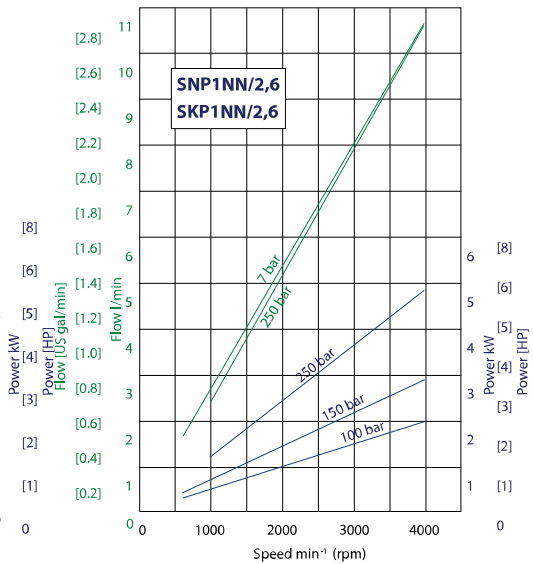
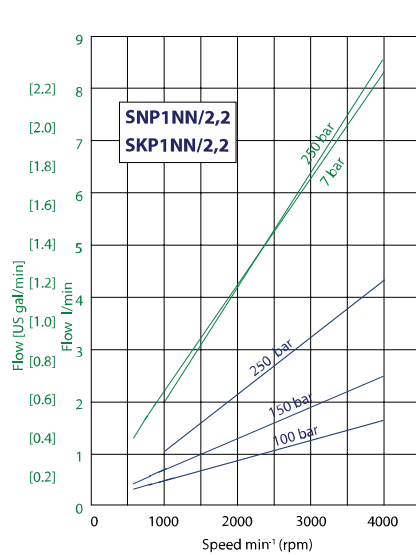
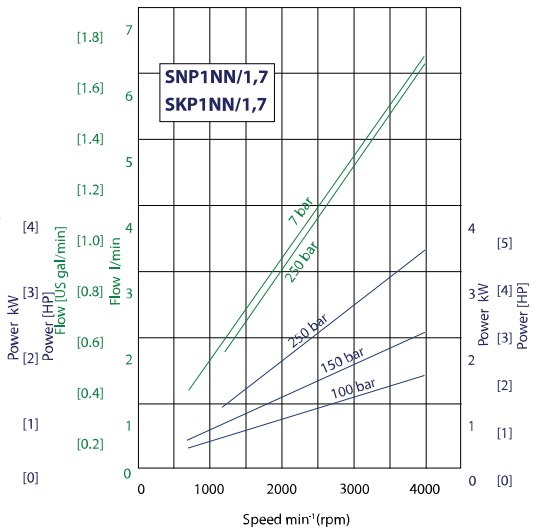
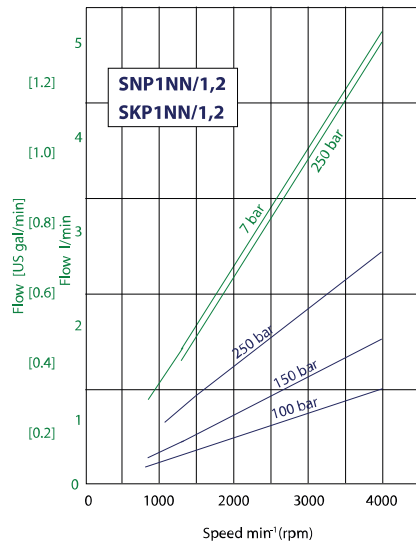
The way circuit components respond to excitation depends on their size, form, and mounting. Because of this, a system line may actually have a greater noise level than the pump. To minimize noise, use:

- flexible hoses (if you must use steel plumbing, clamp the lines).
- flexible (rubber) mounts to minimize other structure borne noise.

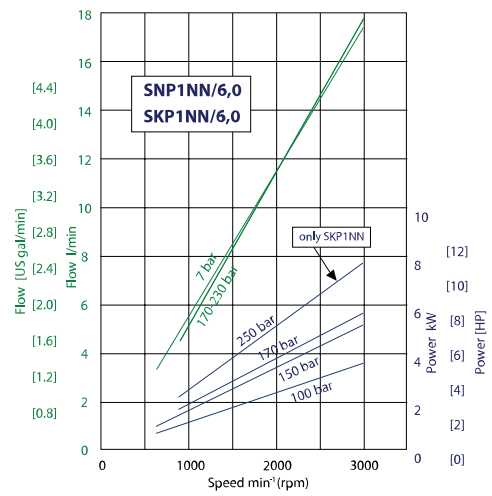
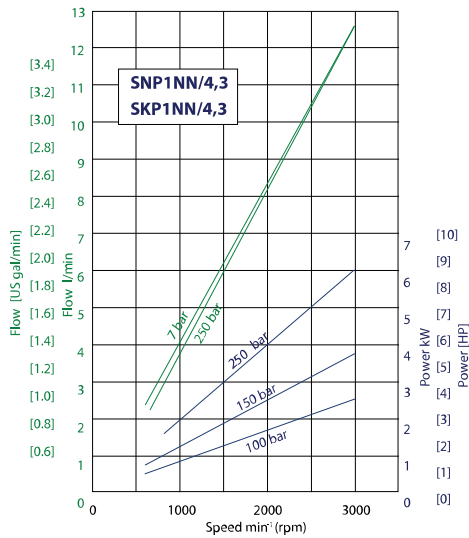
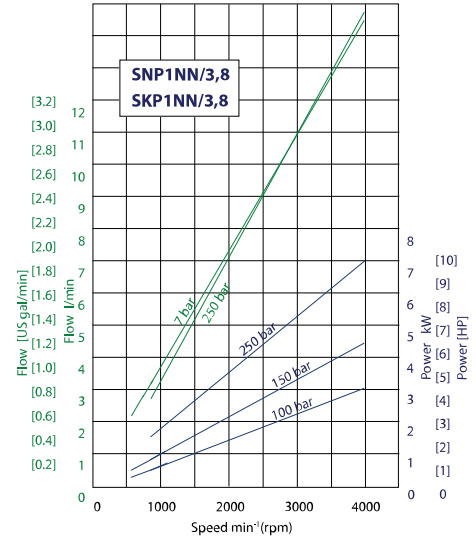
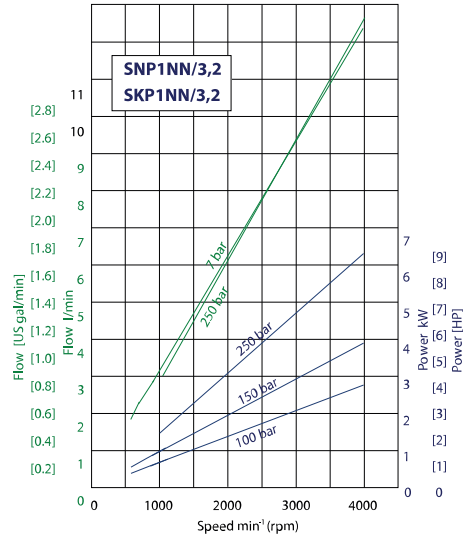
## Technical Information

**GearMe Aluminum Group 0 and Group 1 Pump**
**Pump Performance**
**Pump performance graphs**

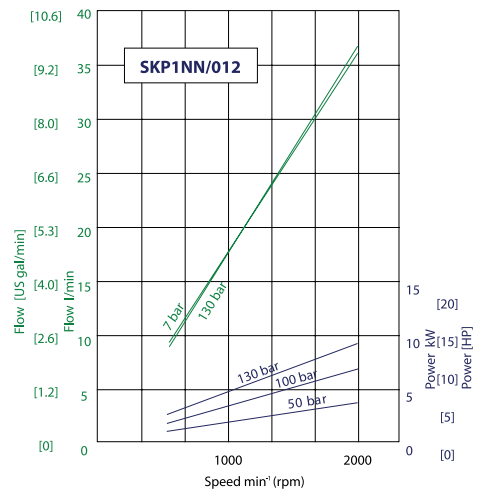
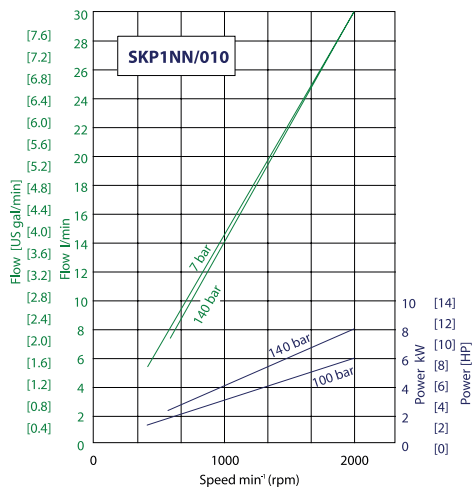
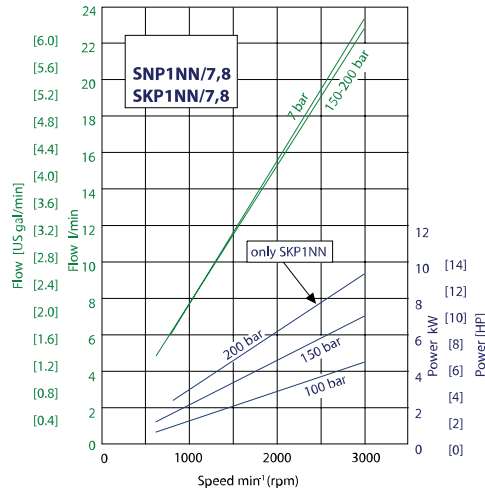
The following graphs provide typical output flow and input power for Group 1 pumps at various working pressures. Data were taken using ISO VG46 petroleum / mineral based fluid at 50°C (viscosity at 28 mm<sup>2</sup>/s [cSt]).



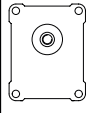
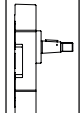
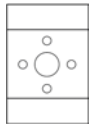
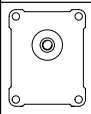
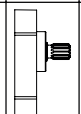
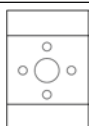

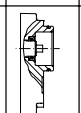
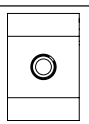

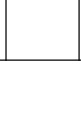

## Technical Information

**GearMe Aluminum Group 0 and Group 1 Pump**
**Pump Performance**


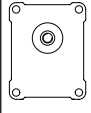
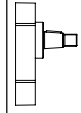
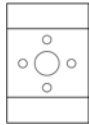
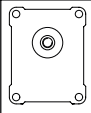
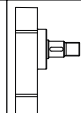
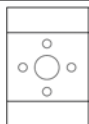
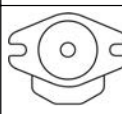
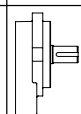
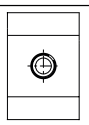
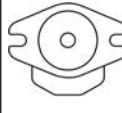
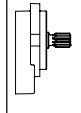
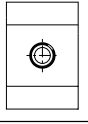
## Technical Information

**GearMe Aluminum Group 0 and Group 1 Pump**
**Pump Performance**


**Product Options**
**Flange, shaft and port configurations**

Code	Flange	Shaft	Port
<b>01BA</b>	25.4 mm [1.0 in] pilot Ø European 4-bolt 	1:8 tapered 	European flanged in + pattern 
<b>01DA</b>	25.4 mm [1.0 in] pilot Ø European 4-bolt 	15-teeth splined m = 0.75 a = 30o 	European flanged in + pattern 
<b>03CA</b>	pilot Ø32 + O-ring + 2 holes through body 	Danfoss tang 	Threaded metric port 
<b>04AA</b>	pilot Ø32 + O-ring + 2 holes through body 	1:5 tapered 	Threaded metric port 

*Flange, shaft and port configurations for SKP1NN*

Code	Flange	Shaft	Port
<b>02BB</b>	30 mm [1.181] pilot Ø European 4-bolt 	1:8 tapered 	European flanged in + pattern 
<b>02FA</b>	30 mm [1.181] pilot Ø European 4-bolt 	12 mm [0.472 in] parallel 	European flanged in + pattern 
<b>06GA</b>	SAE A-A 2-bolt 	12.7 mm [0.5 in] parallel 	Threaded SAE O-Ring boss 
<b>06SA</b>	SAE A-A 2-bolt 	9-teeth splined SAE spline J 498-9T-20/40DP 	Threaded SAE O-Ring boss 

**Shaft options**

Direction is viewed facing the shaft. Group 1 pumps are available with a variety of tang, splined, parallel, and tapered shaft ends. Not all shaft styles are available with all flange styles.

**Shaft availability and nominal torque capability**

A	B	C	D	E	F	G	H	I	J	K	L	M	N	O
					•	•								

**Product Options**

Shaft		Mounting flange code with maximum torque in Nm [lb-in]				
Code	Description	01	02	03	04	06
AA	Taper 1:5-M6				25 [221]	
BA	Taper 1:8-M7	25 [221]				
BB	Taper 1:8-M10		50 [442]			
CA	Tang 5x Ø10			14 [124]		
CE	Tang 6,63x Ø11					21 [186]
CM	Tang 5x Ø10-type 03 + w/o coupling			14 [124]		
DA	Splined Z15-m0,75-alfa 30°-L14	35 [309]				
DB	Splined Z15-m0,75-alfa 30°-L14		35 [309]			
FA	Parallel Ø12-Thread M10x1		24 [212]			
GA	Parallel Ø12,7-Key 3.2					32 [283]
SA	SAE spline J498-9T-20/40					34 [301]

Danfoss recommends mating splines conform to SAE J498 or DIN 5482.

Danfoss external SAE splines have a flat root side fit with circular tooth thickness reduced by 0.127 mm [0.005 in] in respect to class 1 fit. Dimensions are modified to assure a clearance fit with the mating spline.

**! Caution**

Shaft torque capability may limit allowable pressure. Torque ratings assume no external radial loading. Applied torque must not exceed these limits, regardless of stated pressure parameters. Maximum torque ratings are based on shaft torsional fatigue strength.

Various port configurations are available on Group 1 pumps. They include:

- European standard flanged ports
- German standard flanged ports
- Gas threaded ports (BSPP)
- O-Ring boss (following SAE J1926/1 [ISO 11926-1] UNF threads, standard)

For a table of dimensions, see [Ports](#) on page 33.

**Inlet/Outlet port configurations**

A	B	C	D	E	F	G	H	I	J	K	L	M	N	O
	/						•	•	•	•		/		

<b>B1</b>	8x30xM6	Flanged port with threaded holes in X pattern, in center of body
<b>B2</b>	13x30xM6	
<b>C1</b>	8x26xM5	Flanged port with threaded holes in + pattern (European standard ports)
<b>C2</b>	12x26xM5	
<b>C3</b>	13,5x30xM6	
<b>D3</b>	M14x1,5	Threaded metric port
<b>D5</b>	M18x1,5	
<b>D7</b>	M22x1,5	



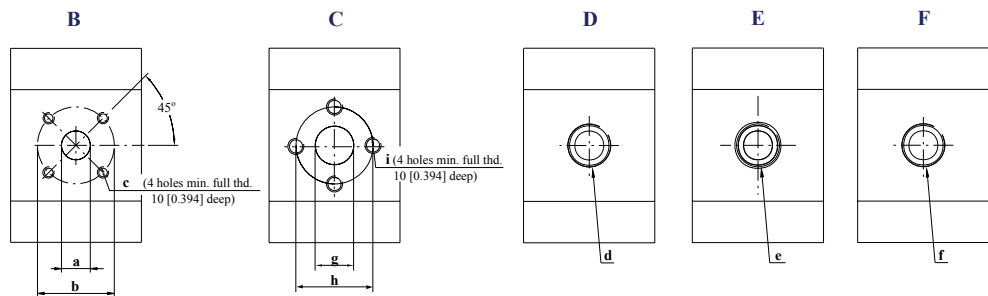
## Technical Information

**GearMe Aluminum Group 0 and Group 1 Pump**
**Product Options**

<b>E3</b>	9/16-18UNF	Threaded SAE, O-Ring boss port
<b>E4</b>	¾-16UNF	
<b>E5</b>	7/8-14UNF	
<b>F2</b>	¼ GAS	Threaded GAS (BSPP) port
<b>F3</b>	3/8 GAS	
<b>F4</b>	½ GAS	
<b>H2</b>	M12x1,5	Threaded metric port ISO 6149
<b>H4</b>	M16x1,5	
<b>H5</b>	M18x1,5	
<b>H7</b>	M22x1,5	

**Ports**

## Available ports



## Dimensions of Group 1 pump ports

Port type		B			C			D	E	F
Port dimension		a	b	c	g	h	i	d	e	f
1,2	Inlet	13 [0.512]	30 [1.181]	M6	12 [0.462]	26 [1.024]	M5	M18x1.5	¾-16UNF-2B	3/8 Gas (BSPP)
	Outlet	8 [0.315]	30 [1.181]	M6	12 [0.462]	26 [1.024]	M5	M14x1.5	9/16-18UNF-2B	3/8 Gas (BSPP)
1,7	Inlet	13 [0.512]	30 [1.181]	M6	12 [0.462]	26 [1.024]	M5	M18x1.5	¾-16UNF-2B	3/8 Gas (BSPP)
	Outlet	8 [0.315]	30 [1.181]	M6	12 [0.462]	26 [1.024]	M5	M14x1.5	9/16-18UNF-2B	3/8 Gas (BSPP)
2,2	Inlet	13 [0.512]	30 [1.181]	M6	12 [0.462]	26 [1.024]	M5	M18x1.5	¾-16UNF-2B	3/8 Gas (BSPP)
	Outlet	8 [0.315]	30 [1.181]	M6	12 [0.462]	26 [1.024]	M5	M14x1.5	9/16-18UNF-2B	3/8 Gas (BSPP)
2,6	Inlet	13 [0.512]	30 [1.181]	M6	12 [0.462]	26 [1.024]	M5	M18x1.5	¾-16UNF-2B	3/8 Gas (BSPP)
	Outlet	8 [0.315]	30 [1.181]	M6	12 [0.462]	26 [1.024]	M5	M14x1.5	9/16-18UNF-2B	3/8 Gas (BSPP)
3,2	Inlet	13 [0.512]	30 [1.181]	M6	12 [0.462]	26 [1.024]	M5	M18x1.5	¾-16UNF-2B	3/8 Gas (BSPP)
	Outlet	8 [0.315]	30 [1.181]	M6	12 [0.462]	26 [1.024]	M5	M14x1.5	9/16-18UNF-2B	3/8 Gas (BSPP)
3,8	Inlet	13 [0.512]	30 [1.181]	M6	12 [0.462]	26 [1.024]	M5	M18x1.5	¾-16UNF-2B	3/8 Gas (BSPP)
	Outlet	8 [0.315]	30 [1.181]	M6	12 [0.462]	26 [1.024]	M5	M18x1.5	9/16-18UNF-2B	3/8 Gas (BSPP)
4,3	Inlet	13 [0.512]	30 [1.181]	M6	12 [0.462]	26 [1.024]	M5	M18x1.5	¾-16UNF-2B	3/8 Gas (BSPP)
	Outlet	8 [0.315]	30 [1.181]	M6	12 [0.462]	26 [1.024]	M5	M18x1.5	9/16-18UNF-2B	3/8 Gas (BSPP)
6,0	Inlet	13 [0.512]	30 [1.181]	M6	12 [0.462]	26 [1.024]	M5	M18x1.5	¾-16UNF-2B	3/8 Gas (BSPP)
	Outlet	13 [0.512]	30 [1.181]	M6	12 [0.462]	26 [1.024]	M5	M18x1.5	9/16-18UNF-2B	3/8 Gas (BSPP)

**Product Options**
*Dimensions of Group 1 pump ports (continued)*

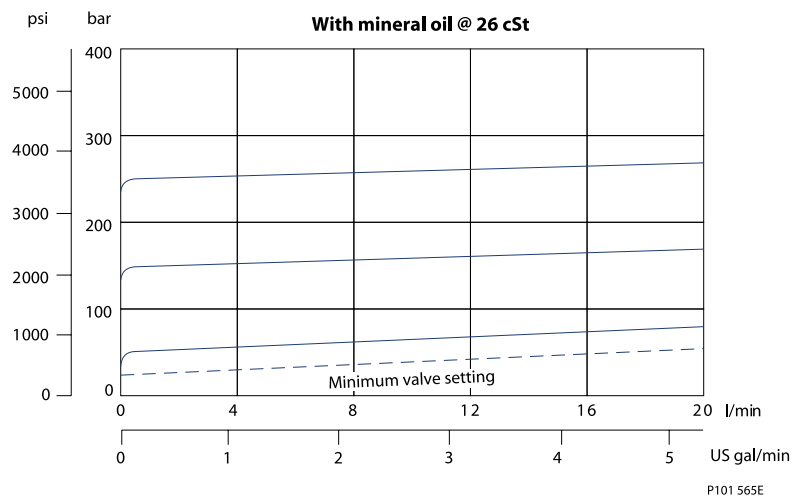
Port type		B			C			D	E	F
Port dimension		a	b	c	g	h	i	d	e	f
7,8	Inlet	13 [0.512]	30 [1.181]	M6	12 [0.462]	26 [1.024]	M5	M18x1.5	¾-16UNF-2B	3/8 Gas (BSPP)
	Outlet	13 [0.512]	30 [1.181]	M6	12 [0.462]	26 [1.024]	M5	M18x1.5	9/16-18UNF-2B	3/8 Gas (BSPP)
010	Inlet	13 [0.512]	30 [1.181]	M6	12 [0.462]	26 [1.024]	M5	M18x1.5	¾-16UNF-2B	3/8 Gas (BSPP)
	Outlet	13 [0.512]	30 [1.181]	M6	12 [0.462]	26 [1.024]	M5	M18x1.5	9/16-18UNF-2B	3/8 Gas (BSPP)
012	Inlet	13 [0.512]	30 [1.181]	M6	12 [0.462]	26 [1.024]	M5	M18x1.5	¾-16UNF-2B	3/8 Gas (BSPP)
	Outlet	13 [0.512]	30 [1.181]	M6	12 [0.462]	26 [1.024]	M5	M18x1.5	9/16-18UNF-2B	3/8 Gas (BSPP)

**SNP11N**

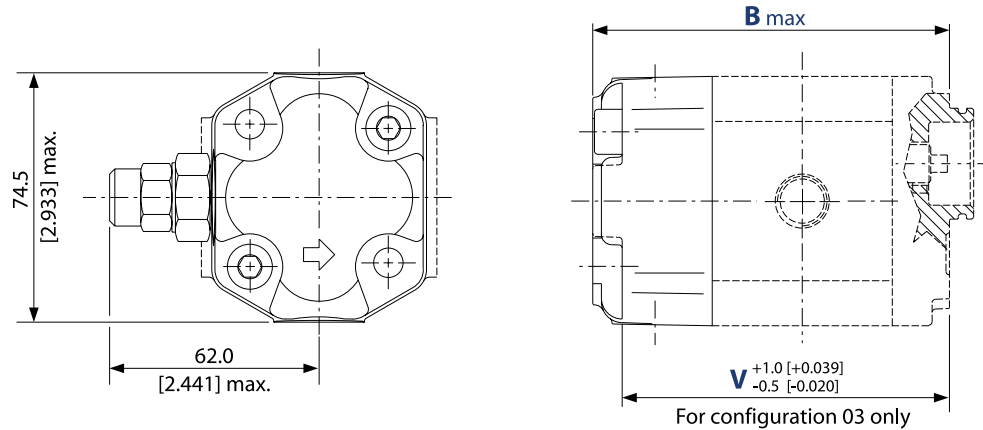
Danfoss offers an optional integral relief valve integrated in the rear cover. It is drained internally and directs all flow from the pump outlet to the inlet when the outlet pressure reaches the valve setting.

 **Caution**

When the relief valve is operating in bypass condition, rapid heat generation occurs. If this bypass condition continues, the pump prematurely fails. The reason for this is that it is a rule, not an exception.

*Valve performance graph*


## Technical Information

**GearMe Aluminum Group 0 and Group 1 Pump**
**Product Options**
*Dimensions*


For configuration 06 (SAE A-A) dimension B and V have to be increased 4.5 mm [0.177 in].

*Integral relief valve and covers dimensions*

Type (displacement)	1,2	1,7	2,2	2,6	3,2	3,8	4,3	6,0	7,8	010	012	
Dimensions mm [in]	<b>B</b>	95.5 [3.760]	97 [3.819]	99 [3.989]	101 [3.976]	103 [4.055]	105 [4.134]	107 [4.213]	113.5 [4.468]	120 [4.724]	129 [5.079]	137 [5.394]
	<b>V</b>	85.0 [3.346]	86.5 [3.406]	88.5 [3.484]	90.5 [3.563]	92.5 [3.642]	94.5 [3.720]	96.5 [3.799]	103.0 [4.055]	109.5 [4.311]	118.5 [4.665]	126.5 [4.980]

**Variant codes for ordering integral relief valves**

These tables detail the various codes for ordering integral relief valves:

A	B	C	D	E	F	G	H	I	J	K	L	M	N	O
												•	•	•

Code	Pump speed for RV setting min-1 (rpm)
<b>A</b>	Not defined
<b>C</b>	500
<b>E</b>	1000
<b>F</b>	1250
<b>G</b>	1500
<b>K</b>	2000
<b>I</b>	2250
<b>L</b>	2500
<b>M</b>	2800
<b>N</b>	3000
<b>O</b>	3250

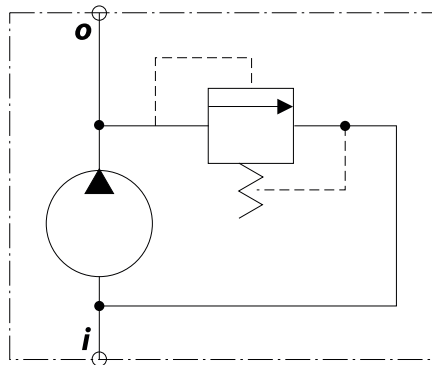
Technical Information

**GearMe Aluminum Group 0 and Group 1 Pump**
**Product Options**

Code	Pressure setting bar [psi]
<b>A</b>	No setting
<b>B</b>	No valve
<b>C</b>	18 [261]
<b>D</b>	25 [363]
<b>E</b>	30 [435]
<b>F</b>	35 [508]
<b>G</b>	40 [580]
<b>K</b>	50 [725]
<b>L</b>	60 [870]
<b>M</b>	70 [1015]
<b>N</b>	80 [1160]
<b>O</b>	90 [1305]
<b>P</b>	100 [1450]
<b>Q</b>	110 [1595]
<b>R</b>	120 [1740]
<b>S</b>	130 [1885]
<b>T</b>	140 [2030]
<b>U</b>	160 [2320]
<b>V</b>	170 [2465]
<b>W</b>	180 [2611]
<b>X</b>	210 [3045]
<b>Y</b>	240 [3480]
<b>Z</b>	250 [3626]

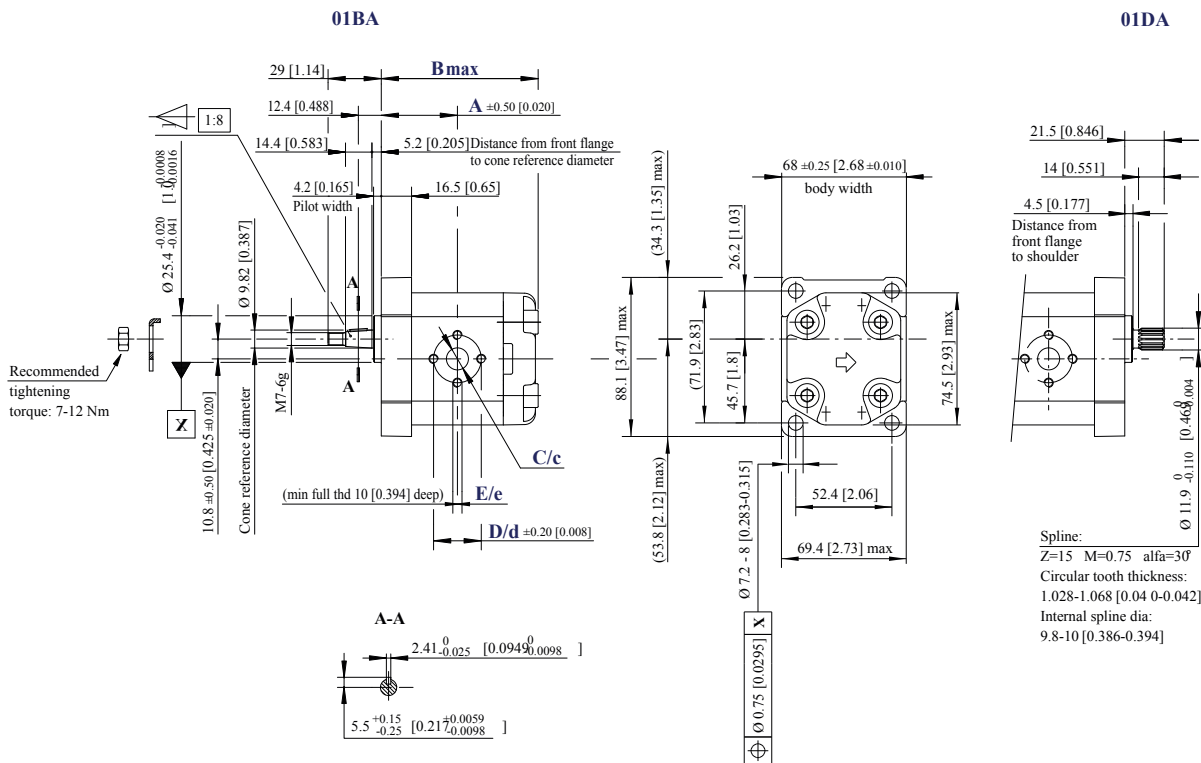
**Integral relief valve schematic**

Valve schematic



Technical Information  
**GearMe Aluminum Group 0 and Group 1 Pump**
**Dimensions**
**SNP1NN - 01BA and 01DA**

This drawing shows the standard porting for 01BA and 01DA. Available in Series SNP1NN only.



SNP1NN – 01BA and 01DA dimensions

Frame size		1,2	1,7	2,2	2,6	3,2	3,8	4,3	6,0	7,8
Dimension	<b>A</b>	37.75 [1.486]	38.5 [1.516]	39.5 [1.555]	40.5 [1.634]	41.5 [1.634]	42.5 [1.673]	43.5 [1.713]	46.75 [1.841]	50.0 [1.969]
	<b>B</b>	79.5 [3.130]	81.0 [3.189]	83.0 [3.268]	85.0 [3.346]	87.0 [3.425]	89.0 [3.504]	91.0 [3.583]	97.5 [3.839]	104.0 [4.094]
Inlet/Outlet	<b>C/c</b>	12 [0.472]								
	<b>D/d</b>	26 [1.024]								
	<b>E/e</b>	M5								

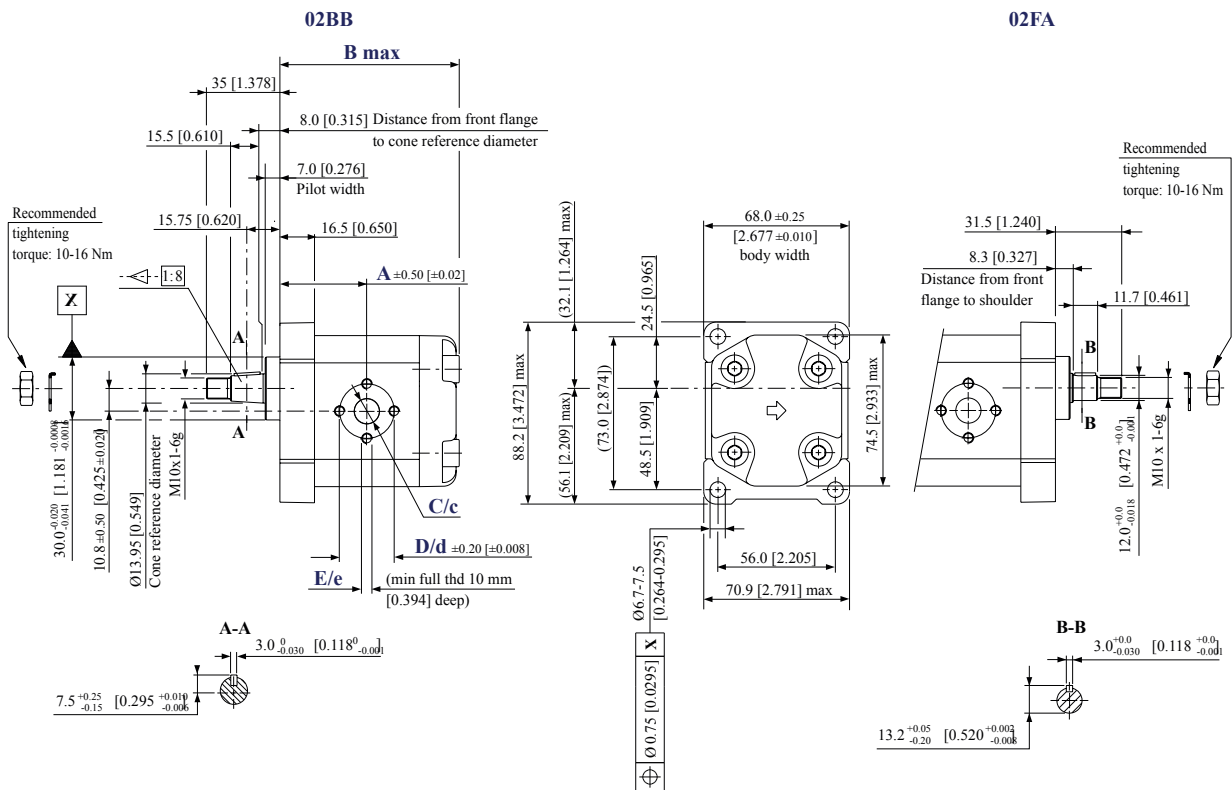
## Model code examples and maximum shaft torque

Flange/drive gear	Model code example	Maximum shaft torque
<b>01BA</b>	SNP1NN/3,8RN01BAP1C2C2NNNN/NNNNN	25 N·m [221 lb·in]
<b>01DA</b>	SNP1NN/6,0LN01DAP1C2C2NNNN/NNNNN	35 N·m [310 lb·in]

 For further details on ordering, see [Model code](#).

Technical Information  
**GearMe Aluminum Group 0 and Group 1 Pump**
**Dimensions**
**SKP1NN – 02BB and 02FA**

This drawing shows the standard porting for 02BB and 02FA. Available in Series SKP1NN only.



SKP1NN – 02BB and 02FA dimensions

Frame size	1,2	1,7	2,2	2,6	3,2	3,8	4,3	6,0	7,8	010	012	
Dimension	A	37.75 [1.486]	38.5 [1.516]	39.5 [1.555]	40.5 [1.634]	41.5 [1.634]	42.5 [1.673]	43.5 [1.713]	46.75 [1.841]	50.0 [1.969]	54.5 [2.146]	58.5 [2.303]
	B	79.5 [3.130]	81.0 [3.189]	83.0 [3.268]	85.0 [3.346]	87.0 [3.425]	89.0 [3.504]	91.0 [3.583]	97.5 [3.839]	104.0 [4.094]	113.0 [4.449]	121.0 [4.764]
Inlet/Outlet	C/c	12 [0.472]										
	D/d	26 [1.024]										
	E/e	M5										

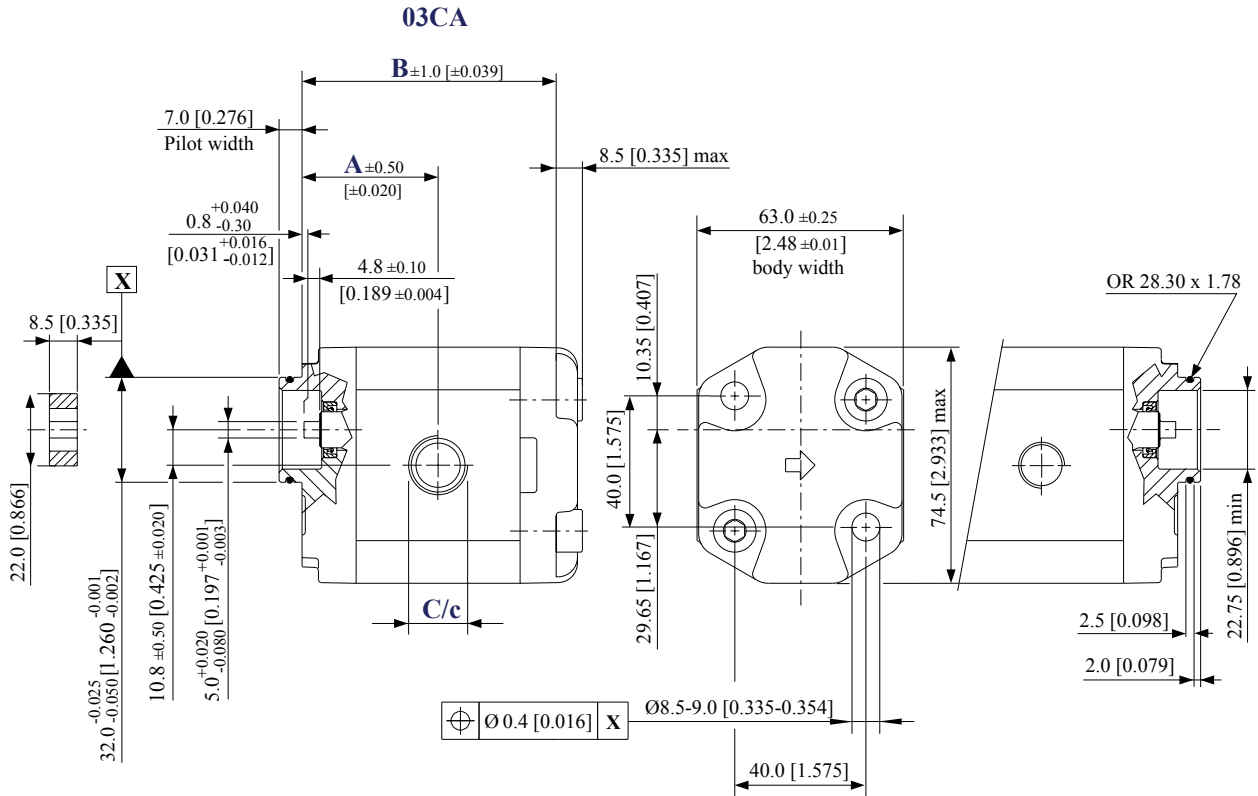
## Model code examples and maximum shaft torque

Flange/drive gear	Model code example	Maximum shaft torque
02BB	SKP1NN/6,0RN02BBP1C2C2NNNN/NNNN	50 N·m [442 lb·in]
02FA	SKP1NN/2,2LN02FAP1C2C2NNNN/NNNN	24 N·m [212 lb·in]

 For further details on ordering, see [Model code](#).

Technical Information  
**GearMe Aluminum Group 0 and Group 1 Pump**
**Dimensions**
**SNP1NN – 03CA**

This drawing shows the standard porting for 03CA.



SNP1NN – 03CA dimensions

Frame size	1,2	1,7	2,2	2,6	3,2	3,8	4,3	6,0	7,8	
Dimension	A	37.75 [1.486]	38.5 [1.516]	39.5 [1.555]	40.5 [1.634]	41.5 [1.634]	42.5 [1.673]	43.5 [1.713]	46.75 [1.841]	50 [1.969]
	B	70 [2.756]	71.5 [2.815]	73.5 [2.894]	75.5 [2.972]	77.5 [3.051]	79.5 [3.130]	81.5 [3.209]	88.0 [3.465]	94.5 [3.720]
Inlet	C	M18 x 1.5 THD 12 [0.472] deep								
Outlet	c	M14 x 1.5, THD 12 [0.472] deep				M18 x 1.5, THD 12 [0.472] deep				

## Model code examples and maximum shaft torque

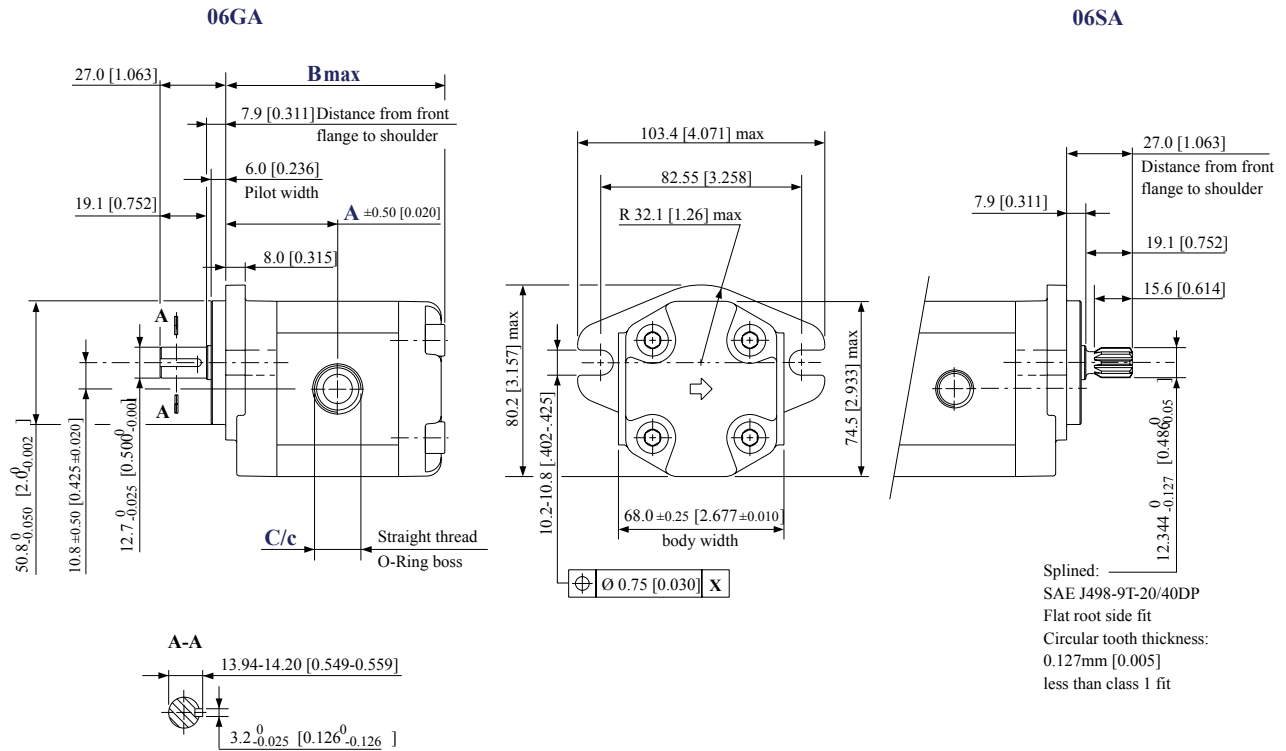
Flange/drive gear	Model code example	Maximum shaft torque
03CA	SNP1NN/1,7RN03CA03D5D3N>NNN	14 N·m [124 lb·in]

 For further details ordering, see [Model code](#).

## Technical Information

**GearMe Aluminum Group 0 and Group 1 Pump**
**Dimensions**
**SKP1NN – 06GA and 06SA**

This drawing shows the standard porting for 06GA and 06SA. Available in Series SKP1NN only.


**SKP1NN – 06GA and 06SA dimensions**

Frame size		1,2	1,7	2,2	2,6	3,2	3,8	4,3	6,0	7,8	010	012
Dimension	A	42.25 [1.663]	43 [1.693]	44 [1.732]	45.0 [1.772]	46.0 [1.811]	47 [1.850]	48 [1.890]	51.25 [2.018]	54.5 [2.146]	59 [2.323]	63.5 [2.50]
	B	84 [3.307]	85.5 [3.366]	87.5 [3.445]	89.5 [3.524]	91.5 [3.602]	93.5 [3.681]	95.5 [3.760]	102 [4.016]	108.5 [4.272]	117.5 [4.626]	125.5 [4.941]
Inlet	C	3/4-16UNF-2B, THD 14.3 [0.563] deep										
Outlet	c	9/16-18UNF-2B, THD 12.7 [0.500] deep										

Flange/drive gear	Model code example	Maximum shaft torque
<b>06GA</b>	SKP1NN/3,2RN06GAP1E4E3NNNN/NNNN	32 N·m [283 lb·in]
<b>06SA</b>	SKP1NN/012LN06SAP1E4E3NNNN/NNNN	34 N·m [301 lb·in]

 For further details on ordering, see [Model code](#).



**Products we offer:**

- Cartridge valves
- DCV directional control valves
- Electric converters
- Electric machines
- Electric motors
- Gear motors
- Gear pumps
- Hydraulic integrated circuits (HICs)
- Hydrostatic motors
- Hydrostatic pumps
- Orbital motors
- PLUS+1® controllers
- PLUS+1® displays
- PLUS+1® joysticks and pedals
- PLUS+1® operator interfaces
- PLUS+1® sensors
- PLUS+1® software
- PLUS+1® software services, support and training
- Position controls and sensors
- PVG proportional valves
- Steering components and systems
- Telematics

**Danfoss Power Solutions** is a global manufacturer and supplier of high-quality hydraulic and electric components. We specialize in providing state-of-the-art technology and solutions that excel in the harsh operating conditions of the mobile off-highway market as well as the marine sector. Building on our extensive applications expertise, we work closely with you to ensure exceptional performance for a broad range of applications. We help you and other customers around the world speed up system development, reduce costs and bring vehicles and vessels to market faster.

Danfoss Power Solutions – your strongest partner in mobile hydraulics and mobile electrification.

**Go to [www.danfoss.com](http://www.danfoss.com) for further product information.**

We offer you expert worldwide support for ensuring the best possible solutions for outstanding performance. And with an extensive network of Global Service Partners, we also provide you with comprehensive global service for all of our components.

**Hydro-Gear**

[www.hydro-gear.com](http://www.hydro-gear.com)

**Daikin-Sauer-Danfoss**

[www.daikin-sauer-danfoss.com](http://www.daikin-sauer-danfoss.com)

Local address:

**Danfoss  
Power Solutions (US) Company**  
2800 East 13th Street  
Ames, IA 50010, USA  
Phone: +1 515 239 6000

**Danfoss  
Power Solutions GmbH & Co. OHG**  
Krokamp 35  
D-24539 Neumünster, Germany  
Phone: +49 4321 871 0

**Danfoss  
Power Solutions ApS**  
Nordborgvej 81  
DK-6430 Nordborg, Denmark  
Phone: +45 7488 2222

**Danfoss  
Power Solutions Trading  
(Shanghai) Co., Ltd.**  
Building #22, No. 1000 Jin Hai Rd  
Jin Qiao, Pudong New District  
Shanghai, China 201206  
Phone: +86 21 2080 6201

Danfoss can accept no responsibility for possible errors in catalogues, brochures and other printed material. Danfoss reserves the right to alter its products without notice. This also applies to products already on order provided that such alterations can be made without subsequent changes being necessary in specifications already agreed. All trademarks in this material are property of the respective companies. Danfoss and the Danfoss logotype are trademarks of Danfoss A/S. All rights reserved.