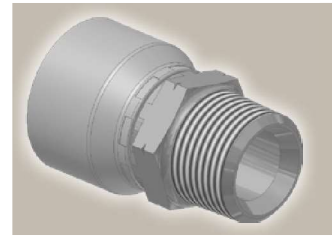
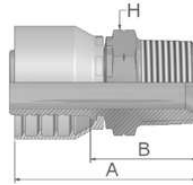


91

BSP-Einschraubzapfen kegelig

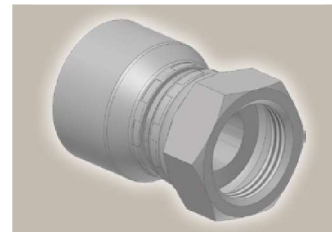
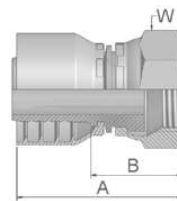
BS5200 – AGR-K



Bestell-Nr.		Schlauch ID				Gewinde	A	B	H
Serie 46	Serie 48	DN	Zoll	Size	mm	BSP	mm	mm	mm
19146-4-4	19148-4-4	6	1/4	-4	6,4	1/4x19	49	26	14
	19148-6-4	6	1/4	-4	6,4	3/8x19	51	28	17
19146-4-5	19148-4-5	8	5/16	-5	7,9	1/4x19	49	25	14
19146-6-5	19148-6-5	8	5/16	-5	7,9	3/8x19	48	24	19
	19148-4-6	10	3/8	-6	9,5	1/4x19	46	24	14
19146-6-6	19148-6-6	10	3/8	-6	9,5	3/8x19	52	27	19
19146-8-6	19148-8-6	10	3/8	-6	9,5	1/2x14	57	34	22
	19148-6-8	12	1/2	-8	12,7	3/8x19	48	25	19
19146-8-8	19148-8-8	12	1/2	-8	12,7	1/2x14	57	33	22
	19148-12-10	16	5/8	-10	15,9	3/4x14	63	37	30
19146-12-12	19148-12-12	19	3/4	-12	19,1	3/4x14	63	37	30
19146-16-16	19148-16-16	25	1	-16	25,4	1x11	72	42	36

B5

Dichtbund mit BSP-Überwurfmutter (flachdichtend)



Bestell-Nr.		Schlauch ID				Gewinde	A	B	W
Serie 46	Serie 48	DN	Zoll	Size	mm	BSP	mm	mm	mm
1B546-4-4	1B548-4-4	6	1/4	-4	6,4	1/4x19	41	17	19
1B546-4-5	1B548-4-5	8	5/16	-5	7,9	1/4x19	41	17	19
1B546-6-5	1B548-6-5	8	5/16	-5	7,9	3/8x19	38	14	22
1B546-8-5	1B548-8-5	8	5/16	-5	7,9	1/2x14	44	21	27
1B546-6-6	1B548-6-6	10	3/8	-6	9,5	3/8x19	37	14	22
1B546-8-6	1B548-8-6	10	3/8	-6	9,5	1/2x14	43	20	27
1B546-8-8	1B548-8-8	12	1/2	-8	12,7	1/2x14	43	19	27
1B546-12-8	1B548-12-8	12	1/2	-8	12,7	3/4x14	43	19	32
1B546-12-10	1B548-12-10	16	5/8	-10	15,9	3/4x14	43	18	32
1B546-12-12	1B548-12-12	19	3/4	-12	19,1	3/4x14	44	18	32
1B546-16-16	1B548-16-16	25	1	-16	25,4	1x11	51	21	41

 Geprüfte **Armaturenserien** für Schlauchtypen, je nach size:

Auch in Edelstahl erhältlich. Details siehe CAT 4400.1/DE

46 oder 48	441	461LT	462	462TC	462ST	629PU	692PU Twin										
46	463	492	492ST	492TC	692	692Twin	692TC	BCH1									
48	301SN	304	387	387ST	387TC	421RH	421SN	426	421TC	436	441RH	462PU	462PU Twin	BCH2	HT2	...	
	471TC	477	477ST	477TC	477RH	487	487ST	487TC	493	787	787TC	787ST	797	797TC	797ST	811	881