

Catalogue MSG11-3500/UK

Characteristics / Ordering Code
**Pilot Operated Check Valve
Series CPOM**

Pilot operated check valves from the Parker series CPOM are in sandwich design for easy configuration of stack systems. Depending on the function required, one or two pilot operated check valves are arranged in the ports A and/or B. The free flow direction is always from the valve side to the manifold side.

Function

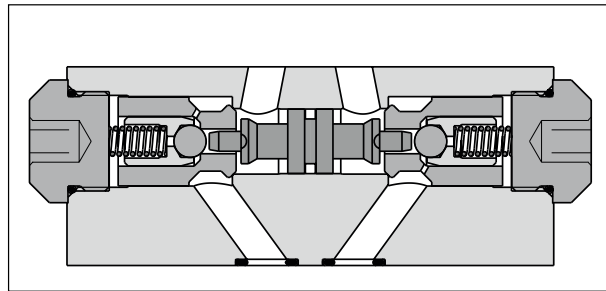
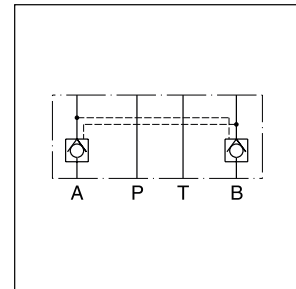
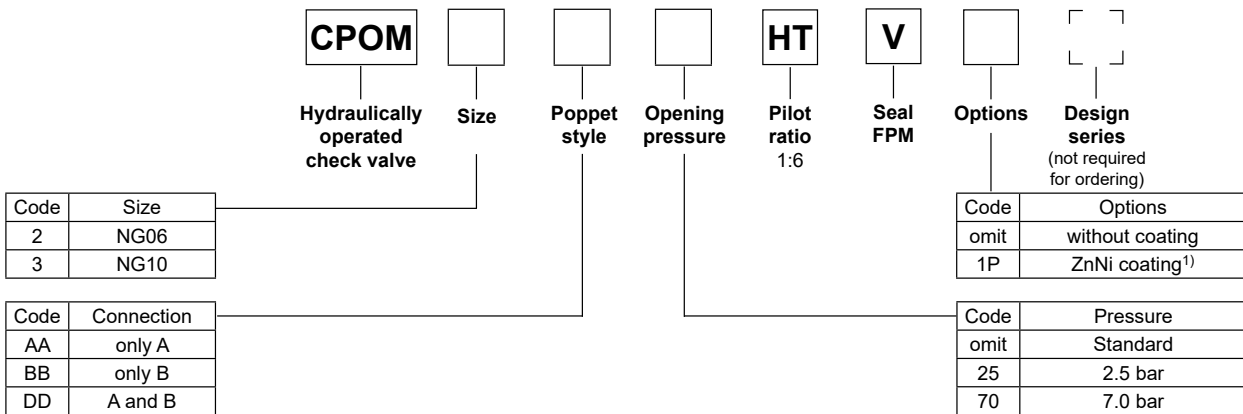
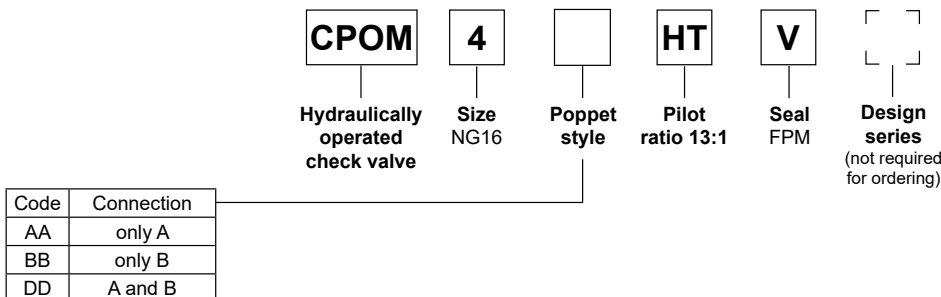
The check valves open when flowing to the consumer side, where the opposing check valve is hydraulically-mechanically pilot operated simultaneously by a control spool, and thus the return flow is enabled from other consumer sides.

Features

- The valve bodies of the Parker valve series CPOM are made of steel.
- The valve poppet is precisely guided into the steel sleeve and ensures a good seal on the seat.
- When the valve poppet is open, the large cross-section allows high flow rates at low differential pressure.
- Pre-opening for CPOM*HT to achieve smooth opening.

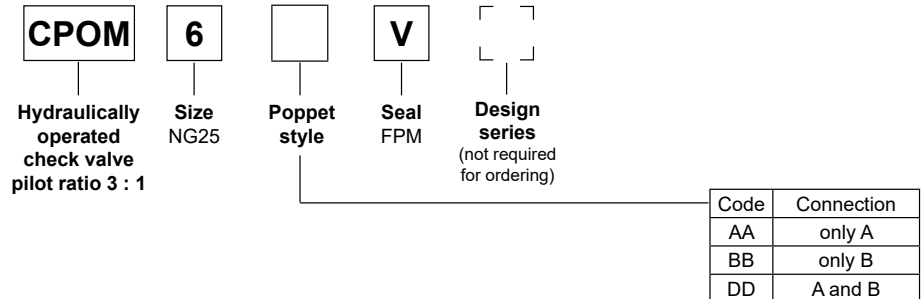


CPOM3

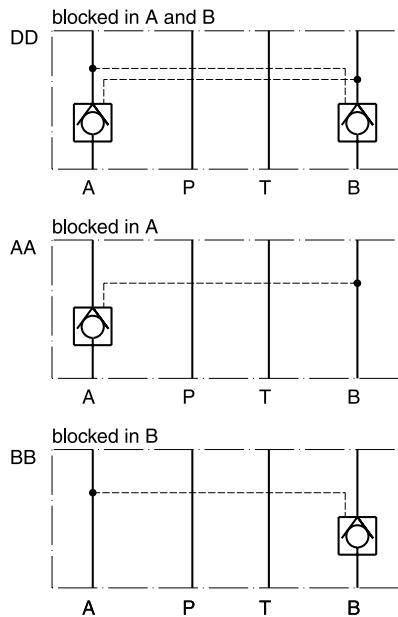
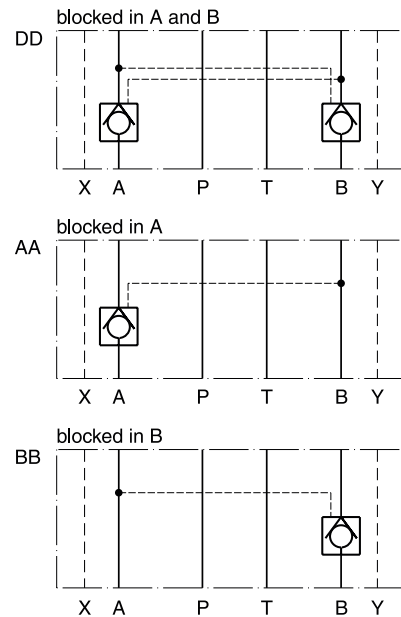

Ordering code
With pre-opening

With pre-opening

¹⁾ On request.

CPOM UK.indd 27.03.24

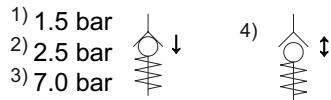
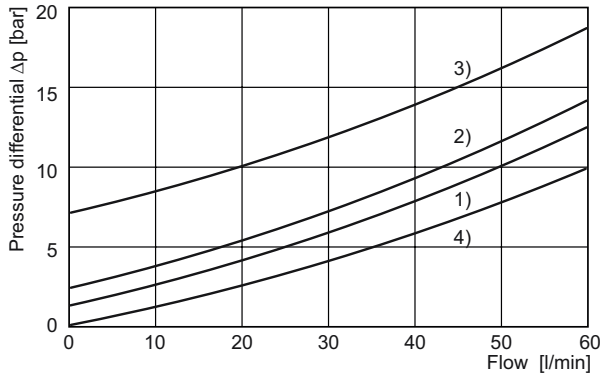
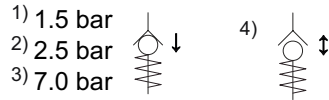
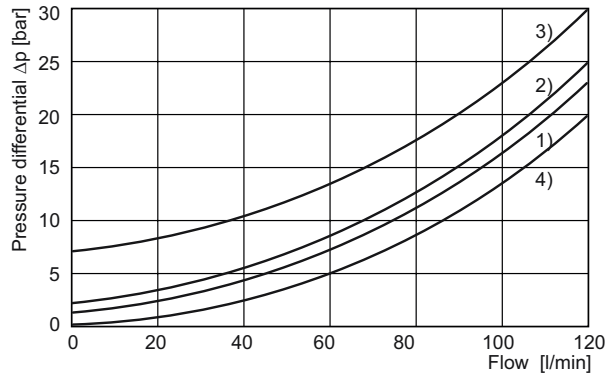
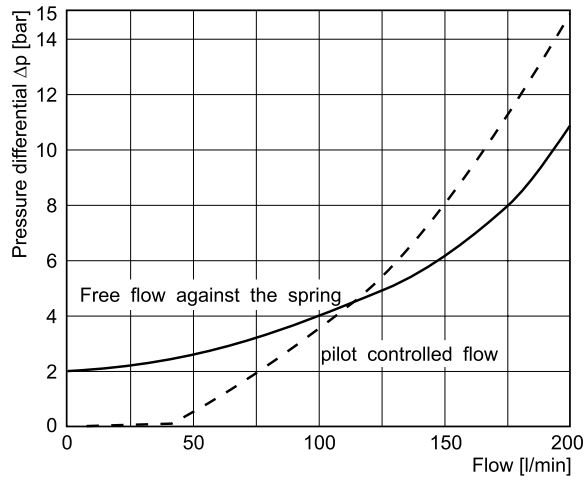
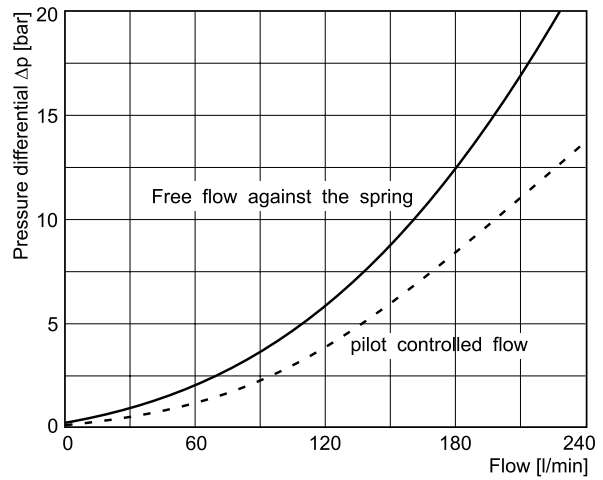


Without pre-opening

Technical data

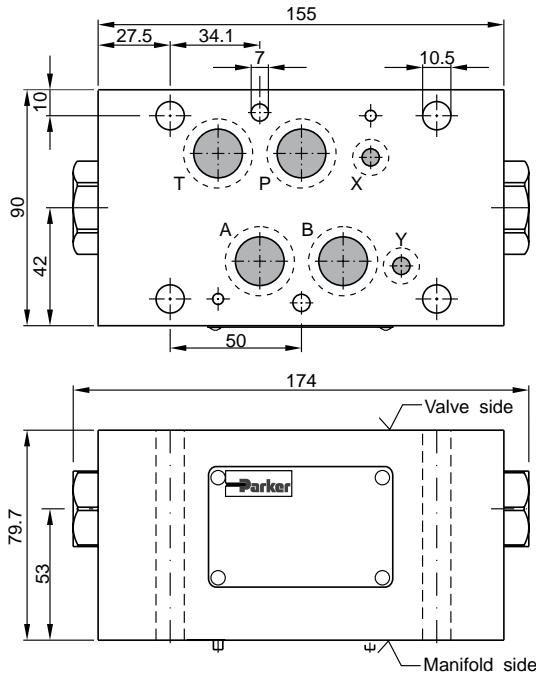
General		CPOM2	CPOM3	CPOM4	CPOM6
Series		CPOM2	CPOM3	CPOM4	CPOM6
Nominal size		NG06	NG10	NG16	NG25
Mounting interface		ISO 4401			
Ambient temperature	[°C]	-20...+70			
MTTF _D value	[years]	150			
Weight	[kg]	1.2	3.1	7.65	9.5
Hydraulic					
Max. operating pressure	[bar]	350	350	350	210
Standard opening pressure	[bar]	1.5	1.5	2.0	0.4
Opening ratio		1 : 6	1 : 6	1 : 13	1 : 3
Fluid		Hydraulic oil according to DIN 51524			
Fluid temperature	[°C]	-20...+70			
Viscosity,	permitted	20...400			
	recommended	30...80			
Filtration		ISO 4406; 18/16/13			

7
Schematics
CPOM2 / CPOM3

CPOM4 / CPOM6


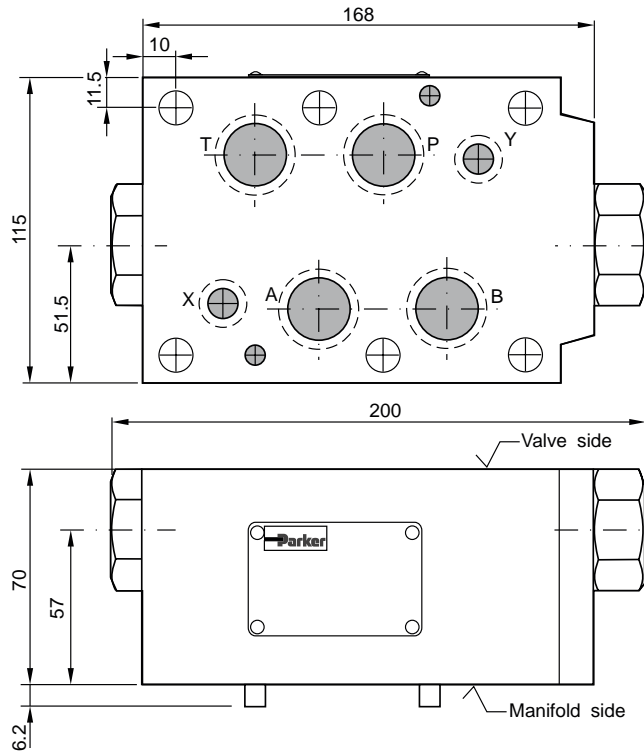
CPOM UK.indd 27.03.24

$\Delta p/Q$ performance curves
CPOM2

CPOM3

CPOM4 (type HT)

CPOM6

 All characteristic curves measured with oil viscosity 33.0 mm²/s (cSt)

CPOM UK.indd 27.03.24

CPOM4


Seal kit CPOM4	
Seal	Order code
V	SK-CPOM4HTV

CPOM6


Seal kit CPOM6	
Seal	Order code
V	SK-CPOM6-V-20

7
