

MOTORS

Technical Information

Orbital Motors Type OMP X and OMR X

White is a leading global provider of
motor and steering solutions that power
the evolution of mobile and industrial
applications around the world.

Contents

Revision history	6
Chapter 1 General Information	7
Orbital Motors Features	8
Orbital Motors Application Areas	8
Operating Parameters Diagrams	8
Speed	9
Torque	10
Output	11
Chapter 2 OMP X Technical Data	12
OMP X motor capacity	13
Maximum pressure	13
High Pressure Shaft Seal in OMP X and OMR X motors	14
OMP X/ OMR X with drain connection	14
OMP X/OMR X without drain connection	14
Permissible shaft pressure	14
Pressure drop in OMP X motor	14
w in drain line	15
Direction of shaft rotation: clockwise	15
Shaft loads	15
OMP X and OMR X	15
OMP X N and OMR X N	16
OMPW X with slide bearings	17
OMPW X N with needle bearings	17
OMP X Model Code	18
EMD Speed Sensor	20
Features	20
Types	20
Chapter 3 OMP X function diagrams	21
OMP X 25	22
OMP X 32	22
OMP X 36	23
OMP X 40	23
OMP X 50	24
OMP X 80	24
OMP X 100	25
OMP X 125	25
OMP X 160	26
OMP X 200	26

WHITE can accept no responsibility for possible errors in catalogues, brochures, and other printed material. WHITE reserves the right to alter its products without notice. This also applies to products already on order provided that such alterations can be made without subsequent changes being necessary in specifications already agreed.

All trademarks in this material are the property of the respective companies. WHITE and the WHITE logotype are trademarks of WHITE Drive Motors & Steering LLC and WHITE Drive Motors and Steering Sp. z o.o..

All rights reserved.

[May 2025], Rev. 02

Archivierung: 11/2025

OMP X 250 _____	27
OMP X 315 _____	27
OMP X 400 _____	28
Chapter 4 OMP X dimensions _____	29
EU version side port set with 2-hole oval mounting flange (A2) _____	30
EU version end port with 2-hole oval mounting flange (A2) _____	31
EU version OMPW X and OMPW X N motors wheel type _____	32
US version side port set with 2-hole oval mounting flange (A2) _____	33
US version side port aligned with 2-hole oval mounting flange (A2) _____	34
US version side port aligned with square mounting flange (C-flange) _____	35
Chapter 5 OMR X Technical Data _____	36
OMR X motor capacity _____	37
Maximum pressure _____	37
High Pressure Shaft Seal in OMP X and OMR X motors _____	38
Pressure drop _____	38
in drain line _____	38
Direction of shaft rotation: clockwise _____	38
OMR X and OMR X shafts _____	38
OMR X Model Code _____	39
Chapter 6 OMR X function diagrams _____	41
OMR X 36 _____	42
OMR X 50 _____	42
OMR X 65 _____	43
OMR X 80 _____	43
OMR X 100 _____	44
OMR X 125 _____	44
OMR X 160 _____	45
OMR X 200 _____	45
OMR X 250 _____	46
OMR X 315 _____	46
OMR X 375 _____	47
OMR X 400 _____	47
Chapter 7 OMR X dimensions _____	48
EU version side port set with 2-hole oval mounting flange (A2) _____	49
EU version end port version with 2-hole oval mounting flange (A2) _____	50
US version side port set with 2-hole oval mounting flange (A2) _____	51
US version side port aligned with 2-hole oval mounting flange (A2) _____	52
US version side port aligned with square mounting flange (C-flange) _____	53

WHITE can accept no responsibility for possible errors in catalogues, brochures, and other printed material. WHITE reserves the right to alter its products without notice. This also applies to products already on order provided that such alterations can be made without subsequent changes being necessary in specifications already agreed.

All trademarks in this material are the property of the respective companies. WHITE and the WHITE logotype are trademarks of WHITE Drive Motors & Steering LLC and WHITE Drive Motors and Steering Sp. z o.o..

All rights reserved.

[May 2025], Rev. 02

Archivierung: 11/2025

Chapter 8 OMP X shaft and port thread version	54
OMP X and OMR X shaft versions	55
OMP X port thread versions	58
OMP X manifold mount	59
Seal guard	59
Figures	60
Tables	61

WHITE can accept no responsibility for possible errors in catalogues, brochures, and other printed material. WHITE reserves the right to alter its products without notice. This also applies to products already on order provided that such alterations can be made without subsequent changes being necessary in specifications already agreed.

All trademarks in this material are the property of the respective companies. WHITE and the WHITE logotype are trademarks of WHITE Drive Motors & Steering LLC and WHITE Drive Motors and Steering Sp. z o.o..

All rights reserved.

[May 2025], Rev. 02

Archivierung: 11/2025

Chapter 1

General Information

Topics:

- Orbital Motors Features
- Orbital Motors Application Areas
- Operating Parameters Diagrams

WHITE can accept no responsibility for possible errors in catalogues, brochures, and other printed material. WHITE reserves the right to alter its products without notice. This also applies to products already on order provided that such alterations can be made without subsequent changes being necessary in specifications already agreed.

All trademarks in this material are the property of the respective companies. WHITE and the WHITE logotype are trademarks of WHITE Drive Motors & Steering LLC and WHITE Drive Motors and Steering Sp. z o.o..

All rights reserved.

[May 2025], Rev. 02

Archivierung: 11/2025

Orbital Motors Features

- Smooth running over the entire speed range
- Constant operating torque over a wide speed range
- High starting torque
- High return pressure without the use of drain line (high pressure shaft seal)
- High efficiency
- High radial and axial bearing capacity
- Long life under extreme operating conditions
- Robust and compact design
- For applications in both open and closed loop hydraulic systems
- Suitable for a wide variety of hydraulic fluids
- Seal guard availability
- EMD Sensor availability

Orbital Motors Application Areas

The orbital motors are used in the following application areas:

- Construction equipment
- Agricultural equipment
- Material handling & lifting equipment
- Forestry equipment
- Lawn and turf equipment
- Machine tools and stationary equipment
- Marine equipment
- Special purpose

Operating Parameters Diagrams

The bar diagrams are useful for a quick determination of relevant motor size for the application. The final motor size can be determined by using the function diagram for each motor size.

Note:

The function diagrams are based on actual tests on a representative number of motors from our production. The diagrams apply to a return pressure between 5 and 10 bar [75 and 150 psi] when using mineral based hydraulic oil with a viscosity of 35 mm²/s [165 SUS] and a temperature of 50°C [120°F].

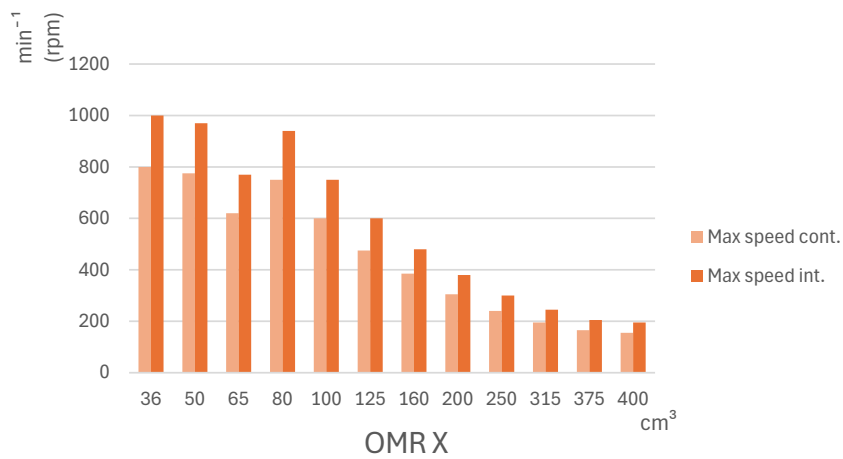
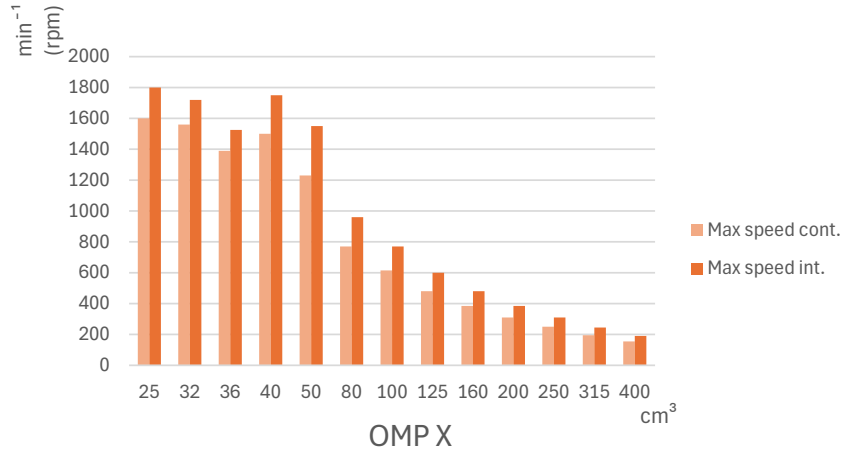
Speed


Figure 1 Maximum speed

WHITE can accept no responsibility for possible errors in catalogues, brochures, and other printed material. WHITE reserves the right to alter its products without notice. This also applies to products already on order provided that such alterations can be made without subsequent changes being necessary in specifications already agreed.

All trademarks in this material are the property of the respective companies. WHITE and the WHITE logotype are trademarks of WHITE Drive Motors & Steering LLC and WHITE Drive Motors and Steering Sp. z o.o..

All rights reserved.

[May 2025], Rev. 02

Archivierung: 11/2025

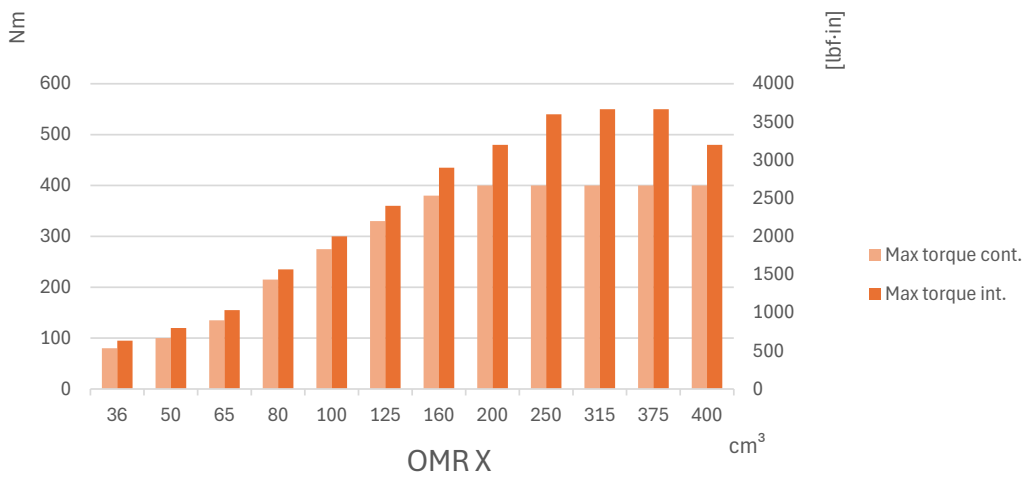
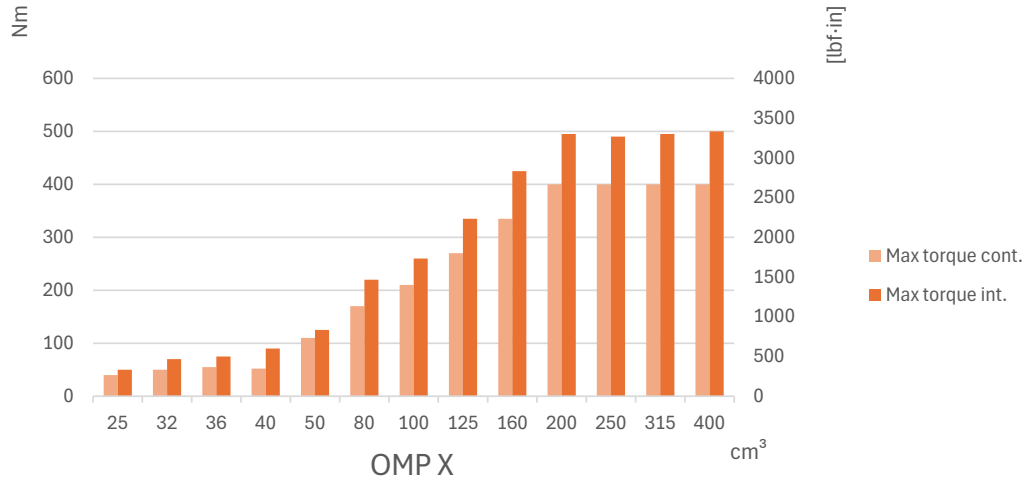
Torque


Figure 2 Maximum torque

WHITE can accept no responsibility for possible errors in catalogues, brochures, and other printed material. WHITE reserves the right to alter its products without notice. This also applies to products already on order provided that such alterations can be made without subsequent changes being necessary in specifications already agreed.

All trademarks in this material are the property of the respective companies. WHITE and the WHITE logotype are trademarks of WHITE Drive Motors & Steering LLC and WHITE Drive Motors and Steering Sp. z o.o..

All rights reserved.

[May 2025], Rev. 02

Archivierung: 11/2025

Output

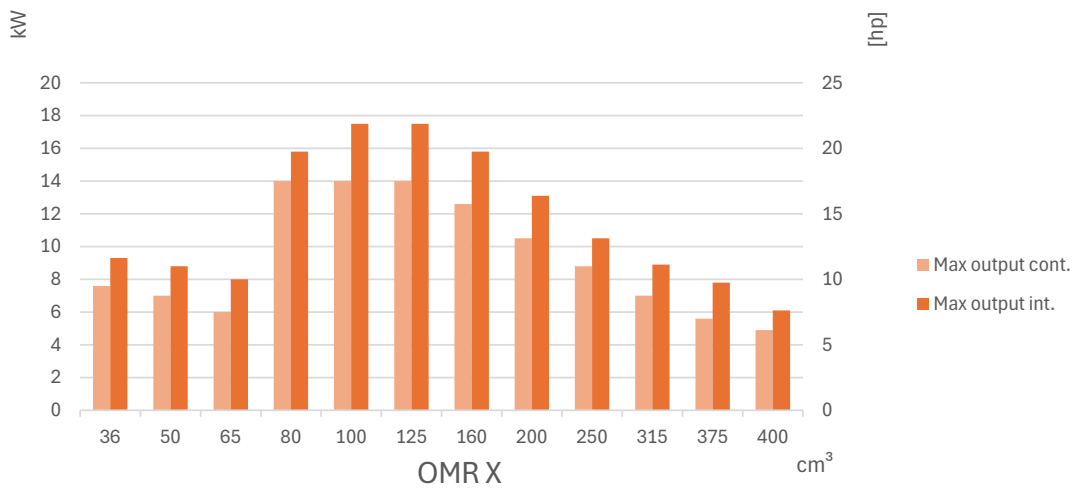
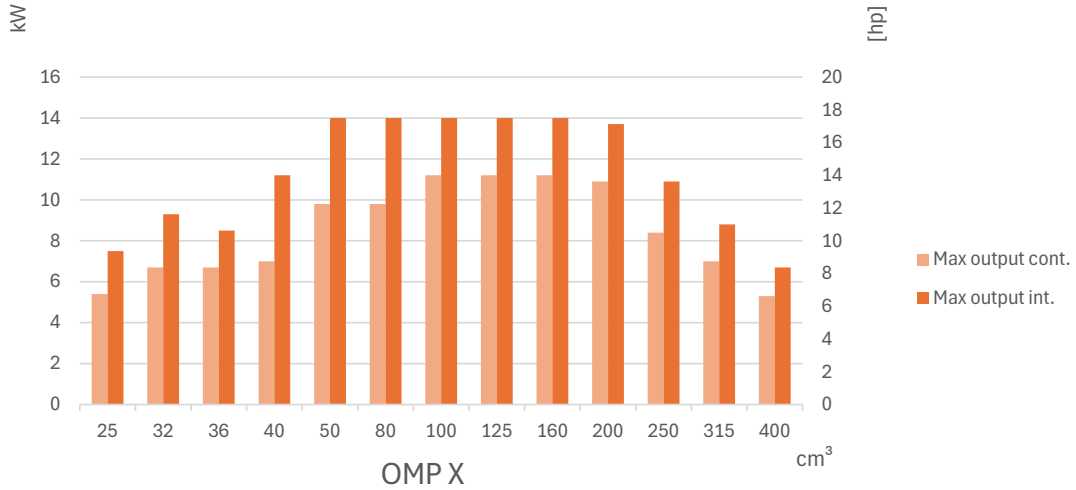


Figure 3 Maximum output

For more information about OMP X and OMPW X, please see [OMP X function diagrams](#).

For more information about OMR X, please see [OMR X function diagrams](#).

WHITE can accept no responsibility for possible errors in catalogues, brochures, and other printed material. WHITE reserves the right to alter its products without notice. This also applies to products already on order provided that such alterations can be made without subsequent changes being necessary in specifications already agreed.

All trademarks in this material are the property of the respective companies. WHITE and the WHITE logotype are trademarks of WHITE Drive Motors & Steering LLC and WHITE Drive Motors and Steering Sp. z o.o..

All rights reserved.

[May 2025], Rev. 02

Archivierung: 11/2025

Chapter 2

OMP X Technical Data

Topics:

- OMP X motor specification
- High Pressure Shaft Seal in OMP X and OMR X motors
- Permissible shaft seal pressure
- Pressure drop in OMP X motor
- Oil flow in drain line
- Direction of shaft rotation: clockwise
- *Shaft loads*
- OMP X Model Code
- EMD Speed Sensor

WHITE can accept no responsibility for possible errors in catalogues, brochures, and other printed material. WHITE reserves the right to alter its products without notice. This also applies to products already on order provided that such alterations can be made without subsequent changes being necessary in specifications already agreed.

All trademarks in this material are the property of the respective companies. WHITE and the WHITE logotype are trademarks of WHITE Drive Motors & Steering LLC and WHITE Drive Motors and Steering Sp. z o.o..

All rights reserved.

[May 2025], Rev. 02

Archivierung: 11/2025

OMP X motor specification

Type			OMP X												
Motor size			25	32	36	40	50	80	100	125	160	200	250	315	400
Geometric displacement	cm ³		25.0	32.0	36	40.0	48.6	77.8	97.3	125	155.7	194.6	242.3	306.1	389.2
	[in ³]		[1.53]	[1.96]	[2.20]	[2.45]	[2.97]	[4.76]	[5.95]	[7.65]	[9.53]	[11.91]	[14.83]	[18.73]	[23.82]
Maximum speed	min ⁻¹	cont.	1600	1560	1390	1500	1230	770	615	480	385	310	250	195	155
	[rpm]	int. ¹⁾	1800	1720	1525	1750	1550	960	770	600	480	385	310	245	190
Maximum torque	N•m [lbf•in]	cont.	40	50	55	52	110	170	210	270	335	400	400	400	400
			[355]	[445]	[485]	[460]	[975]	[1505]	[1860]	[2390]	[2965]	[3540]	[3540]	[3540]	[3540]
		int. ¹⁾	50	70	75	90	125	220	260	335	425	495	490	495	500
		[445]	[620]	[665]	[795]	[1105]	[1950]	[2300]	[2965]	[3760]	[4380]	[4335]	[4380]	[4425]	
Maximum output	kW [hp]	cont.	5.4	6.7	6.7	7.0	9.8	9.8	11.2	11.2	11.2	10.9	8.4	7.0	5.3
			[7.2]	[9.0]	[9.0]	[9.4]	[13.1]	[13.1]	[15.0]	[15.0]	[15.0]	[14.5]	[11.3]	[9.4]	[7.0]
		int. ¹⁾	7.5	9.3	8.5	11.2	14.0	14.0	14.0	14.0	14.0	13.7	10.9	8.8	6.7
		[10.0]	[12.5]	[11.4]	[15.0]	[18.8]	[18.8]	[18.8]	[18.8]	[18.8]	[18.3]	[14.5]	[11.7]	[8.9]	
Maximum pressure drop.	bar [psi]	cont.	115	115	115	115	160	160	160	160	160	155	120	100	75
			[1670]	[1670]	[1670]	[1670]	[2320]	[2320]	[2320]	[2320]	[2320]	[2250]	[1740]	[1450]	[1090]
		int. ¹⁾	160	160	160	160	200	200	200	200	200	195	155	125	95
		[2320]	[2320]	[2320]	[2320]	[2900]	[2900]	[2900]	[2900]	[2900]	[2830]	[2250]	[1810]	[1380]	
Maximum oil flow	l/min [US gal/ min]	cont.	40	50	50	60	60	60	60	60	60	60	60	60	60
			[10.6]	[13.2]	[13.2]	[15.9]	[15.9]	[15.9]	[15.9]	[15.9]	[15.9]	[15.9]	[15.9]	[15.9]	[15.9]
		int. ¹⁾	45	55	55	70	75	75	75	75	75	75	75	75	75
		[11.9]	[14.5]	[14.5]	[18.5]	[19.8]	[19.8]	[19.8]	[19.8]	[19.8]	[19.8]	[19.8]	[19.8]	[19.8]	
Maximum starting pressure with unloaded shaft	bar [psi]	cont.	10	10	10	10	10	10	10	9	7	5	5	5	5
			[145]	[145]	[145]	[145]	[145]	[145]	[145]	[145]	[130]	[100]	[75]	[75]	[75]
Minimum starting torque	N•m [lbf•in]	cont.	35	45	50	55	155	135	190	240	320	375	375	380	370
			[310]	[400]	[440]	[485]	[1370]	[1200]	[1680]	[2125]	[2830]	[3320]	[3320]	[3365]	[3275]
		int. ¹⁾	50	65	70	75	190	170	240	300	400	470	480	475	470
		[440]	[575]	[620]	[660]	[1680]	[1510]	[2125]	[2655]	[3540]	[4160]	[4250]	[4205]	[4160]	

Table 1 OMP X motor specification

- 1) Maximum torque values for the different output shaft can be found in *OMP X and OMR X shaft versions*.
- 2) Intermittent operation, permissible values may occur for max. 10% of every minute.

Maximum pressure

Type			Maximum inlet pressure	Maximum return pressure with drain line
OMP X	bar [psi]	cont.	200 [2900]	200 [2900]
		int.	225 [3260]	225 [3260]

Table 2 Pressure limits

WHITE can accept no responsibility for possible errors in catalogues, brochures, and other printed material. WHITE reserves the right to alter its products without notice. This also applies to products already on order provided that such alterations can be made without subsequent changes being necessary in specifications already agreed.

All trademarks in this material are the property of the respective companies. WHITE and the WHITE logotype are trademarks of WHITE Drive Motors & Steering LLC and WHITE Drive Motors and Steering Sp. z o.o..

All rights reserved.

[May 2025], Rev. 02

Archivierung: 11/2025

High Pressure Shaft Seal in OMP X and OMR X motors

OMP X and OMR X motors feature options with High Pressure Shaft Seal (HPS), with check valves and with or without drain connection.

OMP X/ OMR X with drain connection

The seal pressure equals the pressure in the drain line.

OMP X/OMR X without drain connection

The seal pressure **never exceeds** the pressure in the return line.

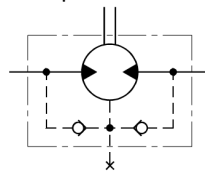


Figure 4 OMP X/ OMR X without drain connection

Permissible shaft seal pressure

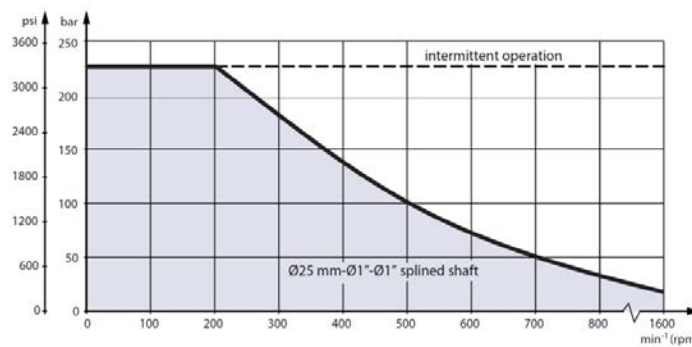
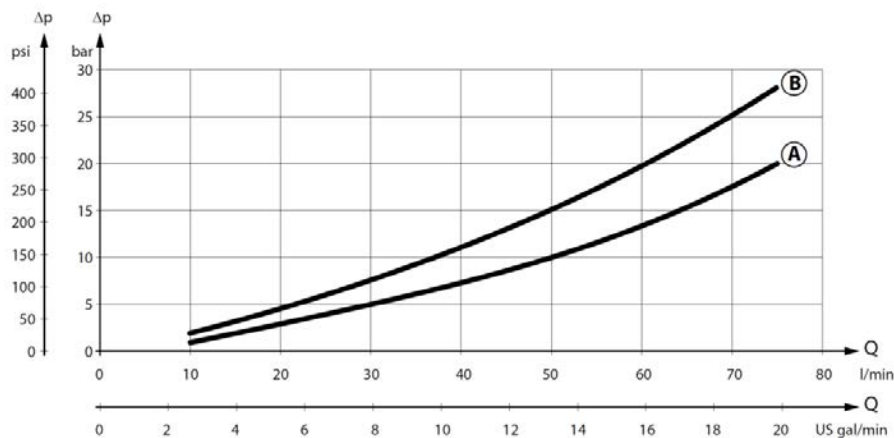


Figure 5 OMP X Maximum permissible shaft seal pressure

Pressure drop in OMP X motor

The curve applies to an unloaded motor and an oil viscosity of 35 mm²/s [165 SUS].



- A: OMP X 50 - 400
- B: OMP X 25 - 40 / OMPW X

Figure 6 OMP X Motors Pressure drop

WHITE can accept no responsibility for possible errors in catalogues, brochures, and other printed material. WHITE reserves the right to alter its products without notice. This also applies to products already on order provided that such alterations can be made without subsequent changes being necessary in specifications already agreed.

All trademarks in this material are the property of the respective companies. WHITE and the WHITE logotype are trademarks of WHITE Drive Motors & Steering LLC and WHITE Drive Motors and Steering Sp. z o.o..

All rights reserved.

[May 2025], Rev. 02

Archivierung: 11/2025

Oil flow in drain line

Pressure drop bar [psi]	Viscosity mm ² /s [SUS]	Oil flow in drain line l/min [US gal/min]
100 [1450]	20 [100]	2.5 [0.66]
	35 [165]	1.8 [0.78]
140 [2030]	20 [100]	3.5 [0.78]
	35 [165]	2.8 [0.74]

Table 3 Max. oil flow in the drain line at return pressure less 5-10 bar

Direction of shaft rotation: clockwise

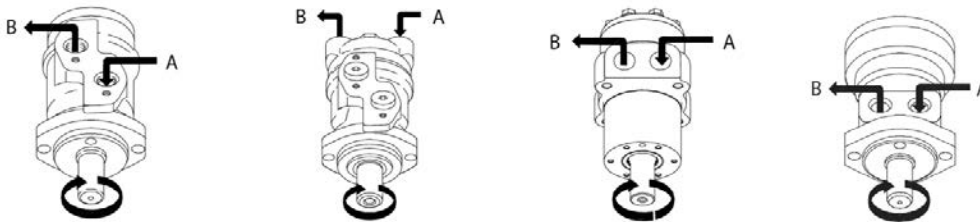


Figure 7 OMP X Direction of shaft rotation: clockwise

Shaft loads

OMP X and OMR X

The permissible radial shaft load (P_R) depends on a distance from the point of load to the mounting flange (L), speed (n), mounting flange and shaft version.

Mounting flange	Shaft version	Metric formula	Imperial formula
2-hole oval flange (European version)	25 mm cylindrical 28.5 mm tapered 1 in cylindrical 1 in splined	$\frac{800}{n} \cdot \frac{250000 N^*}{95 + L}$	$\frac{800}{n} \cdot \frac{2215 lbf^*}{3.74 + L}$
Square flange ** 2-hole oval flange (US)	25 mm cylindrical 1 in splined	$\frac{800}{n} \cdot \frac{250000 N^*}{101 + L}$	$\frac{800}{n} \cdot \frac{2215 lbf^*}{3.98 + L}$

Table 4 OMP X and OMR X Permissible shaft load (P_R) in N [lbf]

* $n \geq 200 \text{ min}^{-1}$ [rpm]; $\leq 55 \text{ mm}$ [2.2 in]. $n < 200 \text{ min}^{-1}$ [rpm]; $= > P_{Rmax} = 8000 \text{ N}$ [1800 lbf]

** For both European and US-version

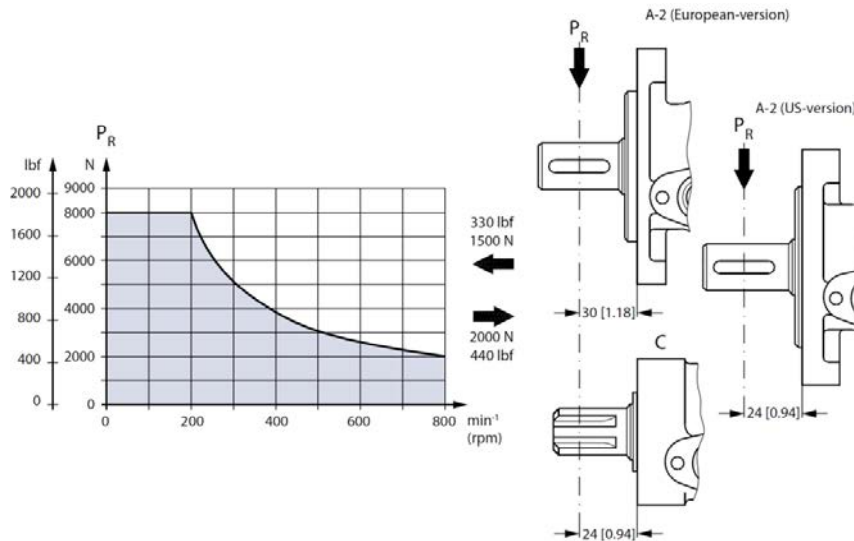


Figure 8 OMP X and OMR X shaft loads

The curve shows the relation between P_R and n :

- when $l = 30 \text{ mm}$ [1.18 in] for motors with A2 (European version)
- when $l = 24 \text{ mm}$ [0.94 in] for motors with square mounting flange and A2 (US version)

For applications with special performance requirements, we recommend OMP X and OMR X with the output shaft mounted in needle bearings.

OMP X N and OMR X N

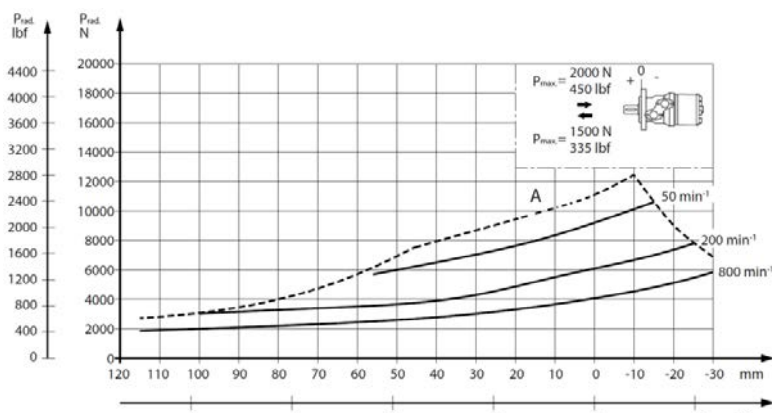


Figure 9 OMP X N shaft loads

The output shaft on OMP X N can be ordered in needle bearings. These bearings and the recessed mounting flange allow a higher permissible radial load in comparison to OMP X motors.

The permissible radial load on the shaft is shown for different speeds as a function of the distance from the mounting flange to the point of load application.

Curve A indicates the max. radial load. Any shaft load exceeding the values quoted in curve A will involve risk of breakage.

The other curves apply to a B_{10} bearing life of 2000 hours at the number of revolutions indicated by the curve letter. Mineral based hydraulic oil with a low ash content of an anti-wear additive must be used.

OMPW X with slide bearings

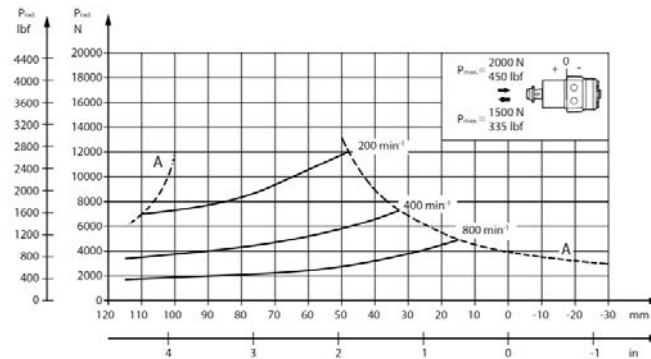


Figure 10 OMPW X with slide bearings shaft loads

The output shaft on OMPW X can be ordered in slide bearings like the other OMP X motors. The permissible higher radial load is therefore due to the recessed mounting flange moving the point of load closer to the motor bearings.

The permissible radial load on the shaft is shown for different speeds as a function of the distance from the mounting flange to the point of load application.

The curves are not based on calculations of B10 bearing life. They represent absolute limits that must not be exceeded.

Curve A indicates the max. radial load. Any shaft load exceeding the values quoted in curve A will involve risk of breakage.

OMPW X N with needle bearings

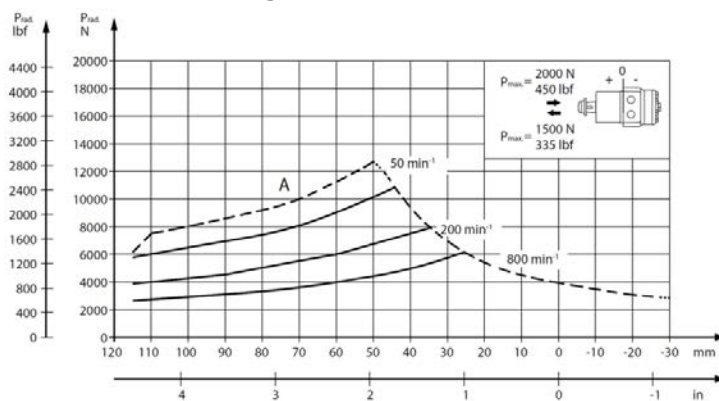


Figure 11 OMPW X N with needle bearings shaft loads

The output shaft on OMPW X N can be ordered in needle bearings. These bearings and the recessed mounting flange allow a higher permissible radial load in comparison to OMP X motors.

The permissible radial load on the shaft is shown for different speeds as a function of the distance from the mounting flange to the point of load application.

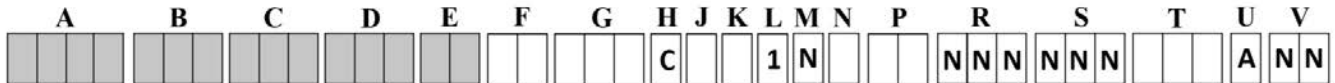
Curve A indicates the max. radial load. Any shaft load exceeding the values quoted in curve A will involve risk of breakage.

The other curves apply to a B₁₀ bearing life of 2000 hours at the number of revolutions indicated by the curve letter. Mineral based hydraulic oil with a sulfur content of an -we es must be used.

OMP X Model Code

The coding system has been developed to identify the construction options for the OMP X motors. The model code begins with the motor family and the remaining digits are added in to configure the motor with the desired features, all digits must be filled in.

Example: OMPX-200-NNN-B11-SO-A3-A11-C-E-B-1-N-N-NN-NN-NNN-NNN-NNN-A-NN.



A – Main motor family

OMPX OMP X motor series

B – Motor displacement

Code	Displacement, cm ³ /rev [in ³ /rev]	Code	Displacement, cm ³ /rev [in ³ /rev]
025	25.0 [1.53]	100	97.3 [5.94]
032	32.0 [1.95]	125	125.0 [7.63]
036	36.0 [2.20]	160	155.7 [9.50]
040	40.0 [2.44]	200	194.6 [11.88]
050	48.6 [2.97]	250	242.3 [14.79]
060	59.1 [3.61]	315	306.1 [18.68]
080	77.8 [4.75]	400	389.1 [23.74]

C – Motor type (Align with options: D, E and F)

NNN	Standard motor
A10	Wheel motor
B13	Standard motor with needle bearing
L11	Wheel motor with needle bearing

D – Mounting type (Align with options: E and F)

B11	A2 flange; 82.5 Dia x 8 Pilot; 106.4 Dia. B.C.
B12	A2 flange; 82.5 Dia x 2.6 Pilot; 106.4 Dia. B.C.
C10	C flange; 44 Dia x 2.6 Pilot; 83 Dia. B.C.; 3/8-16 mounting
C11	C flange int.; PD44-BC83-met
C20	W flange; PD80-BC103

E – Port type (Align with options: D, F and G)

SO	Side port – Offset
SA	Side port – Aligned
EA	End port

F – Main ports thread type

A3	G 1/2
A8	7/8-14 UNF
A9	1/2-14 NPTF
B7	M22 x 1,5 according to ISO 6149
C1	Manifold

WHITE can accept no responsibility for possible errors in catalogues, brochures, and other printed material. WHITE reserves the right to alter its products without notice. This also applies to products already on order provided that such alterations can be made without subsequent changes being necessary in specifications already agreed.

All trademarks in this material are the property of the respective companies. WHITE and the WHITE logotype are trademarks of WHITE Drive Motors & Steering LLC and WHITE Drive Motors and Steering Sp. z o.o..

All rights reserved.

| May 2025 |, Rev. 02

Archivierung: 11/2025

G – Shaft type (Align with options: C, F and K)

A11	<i>Cylindrical 25 mm with 8 mm key; M8 hole in shaft end</i>
B11	<i>Cylindrical 1 inch with 1/4 in key; M8 hole in shaft end</i>
B12	<i>Cylindrical 1 inch with 1/4 in key; 1/4-20UNC hole in shaft end</i>
B13	<i>Cylindrical 1 inch with Woodruff key; 1/4-20UNC hole in shaft end</i>
B14	<i>Cylindrical 1 inch with cross hole 10.3; 1/4-20UNC hole in shaft end</i>
B15	<i>Cylindrical 1 inch with cross hole 8.0</i>
C11	<i>Spline 7/8" – 13T</i>
C13	<i>1 inch 6B Spline; M8 hole in shaft end</i>
C14	<i>1 inch 6B Spline; 1/4-20UNC hole in shaft end</i>
E10	<i>Tapered 28.5 mm – 1:10</i>
F10	<i>Tapered 1" – 1:8, WK3/16x3/4</i>

H – Shaft seal

C	<i>High pressure shaft seal - NBR</i>
----------	---------------------------------------

J- Dust seal

B	<i>Dust seal integrated in shaft seal plus seal guard</i>
E	<i>Dust seal integrated in shaft seal</i>

K – Drain port (Align with options: F and G)

B	<i>G1/4</i>
D	<i>7/16 – 20 UNF</i>
K	<i>M12 x 1,5 according to ISO 6149</i>
M	<i>No drain port due to EMD</i>

L – Check valve

1	<i>Yes</i>
----------	------------

M – Brake release port

N	<i>None</i>
----------	-------------

N- Speed sensor

N	<i>None</i>
A	<i>Prepared for EMD speed sensor</i>

P - Painting

NN	<i>No paint</i>
AA	<i>Black, 9005; Corr. class C3; Standard covering</i>
AB	<i>Black, 9005; Corr. class C3; Surface covering</i>

R - Valve option

NNN	<i>None</i>
------------	-------------

S – Specific visible features

NNN	<i>None</i>
------------	-------------

T – Specific non-visible features

NNN	<i>None</i>
G10	<i>Gear set – Free running</i>

U – Packaging

A	<i>Single pack</i>
----------	--------------------

V – Name tags: Motor and box

NN	<i>Name tag</i>
-----------	-----------------

In case of features not included in model code, please contact with White customer service department.

WHITE can accept no responsibility for possible errors in catalogues, brochures, and other printed material. WHITE reserves the right to alter its products without notice. This also applies to products already on order provided that such alterations can be made without subsequent changes being necessary in specifications already agreed.

All trademarks in this material are the property of the respective companies. WHITE and the WHITE logotype are trademarks of WHITE Drive Motors & Steering LLC and WHITE Drive Motors and Steering Sp. z o.o..

All rights reserved.

[May 2025], Rev. 02

Archivierung: 11/2025

EMD Speed Sensor

Features

- EMD speed sensor up to 180 pulse/rev
- Rotation speed and direction output available
- Speed range up to 2500 rpm
- Push-pull arm
- CAN output signal
- DEUTSCH DT connector – 6 pins

Types

- Standard pulse mode
- 90 pulse mode
- Quadrature mode
- CAN mode
- OEM configurable sensor
- Compatibility OMS
- Compatibility OMM
- Compatibility OMP/R

For more detailed information about EMD speed sensors, please see EMD – Catalogue.

WHITE can accept no responsibility for possible errors in catalogues, brochures, and other printed material. WHITE reserves the right to alter its products without notice. This also applies to products already on order provided that such alterations can be made without subsequent changes being necessary in specifications already agreed.

All trademarks in this material are the property of the respective companies. WHITE and the WHITE logotype are trademarks of WHITE Drive Motors & Steering LLC and WHITE Drive Motors and Steering Sp. z o.o..

All rights reserved.

| May 2025 |, Rev. 02

Archivierung: 11/2025

Chapter 3

OMP X function diagrams

Topics:

- OMP X 25
- OMP X 32
- OMP X 36
- OMP X 40
- OMP X 50
- OMP X 80
- OMP X 100
- OMP X 125
- OMP X 160
- OMP X 200
- OMP X 250
- OMP X 315
- OMP X 400

WHITE can accept no responsibility for possible errors in catalogues, brochures, and other printed material. WHITE reserves the right to alter its products without notice. This also applies to products already on order provided that such alterations can be made without subsequent changes being necessary in specifications already agreed.

All trademarks in this material are the property of the respective companies. WHITE and the WHITE logotype are trademarks of WHITE Drive Motors & Steering LLC and WHITE Drive Motors and Steering Sp. z o.o..

All rights reserved.

| May 2025 |, Rev. 02

Archivierung: 11/2025

OMP X 25

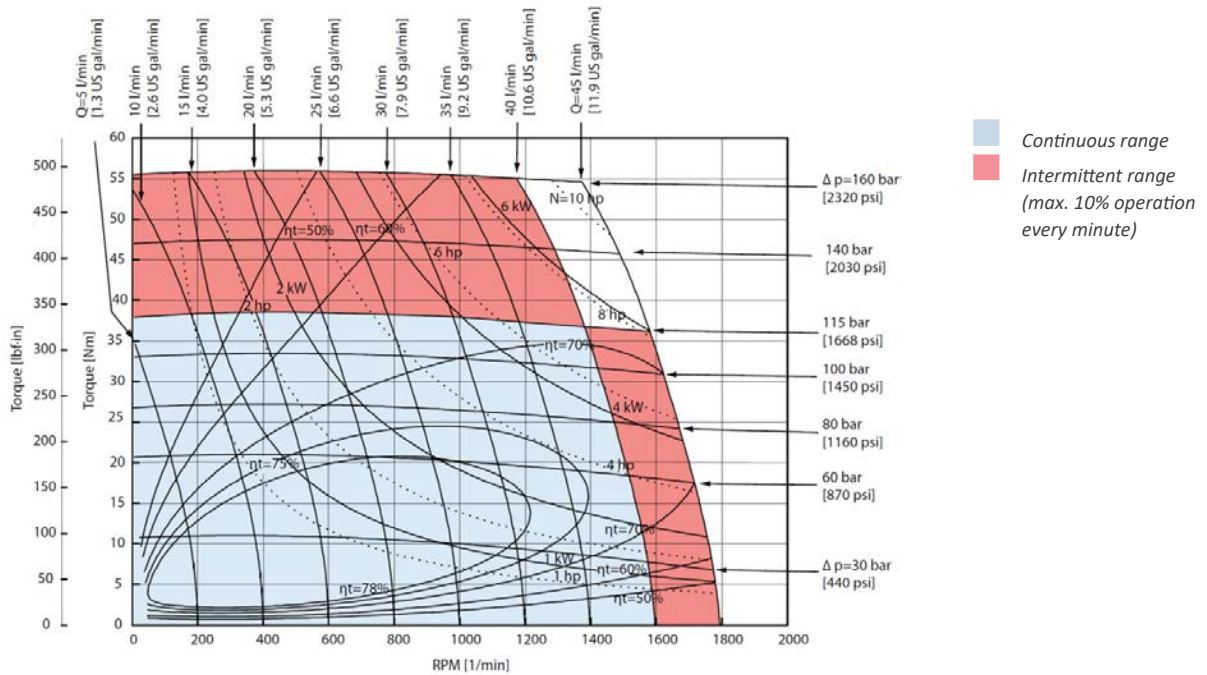


Figure 12 OMP X 25 function diagram

OMP X 32

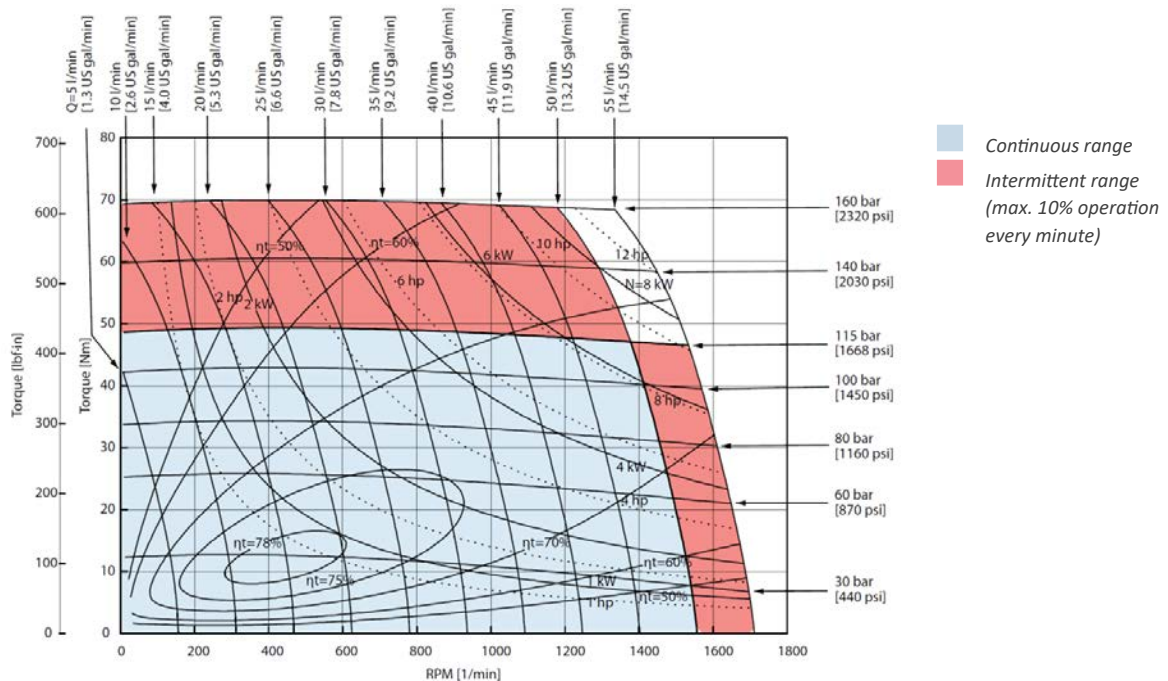


Figure 13 OMP X 32 function diagram

WHITE can accept no responsibility for possible errors in catalogues, brochures, and other printed material. WHITE reserves the right to alter its products without notice. This also applies to products already on order provided that such alterations can be made without subsequent changes being necessary in specifications already agreed.

All trademarks in this material are the property of the respective companies. WHITE and the WHITE logotype are trademarks of WHITE Drive Motors & Steering LLC and WHITE Drive Motors and Steering Sp. z o.o..

All rights reserved.

[May 2025], Rev. 02

Archivierung: 11/2025

OMP X 36

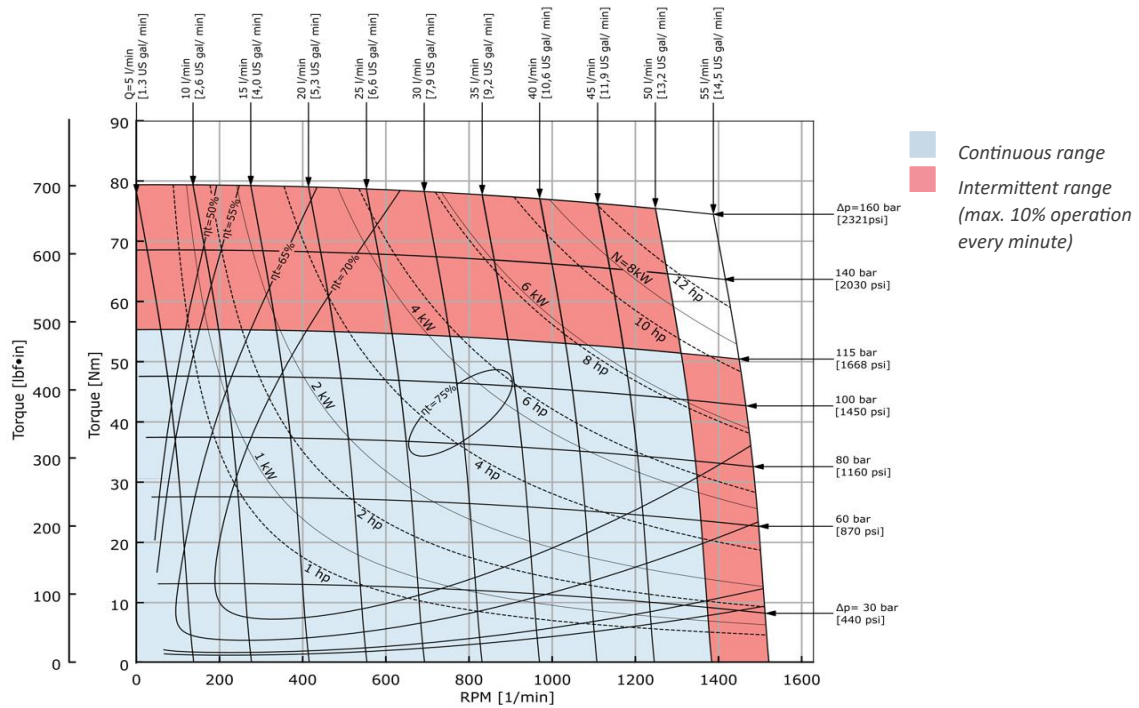


Figure 14 OMP X 36 function diagram

OMP X 40

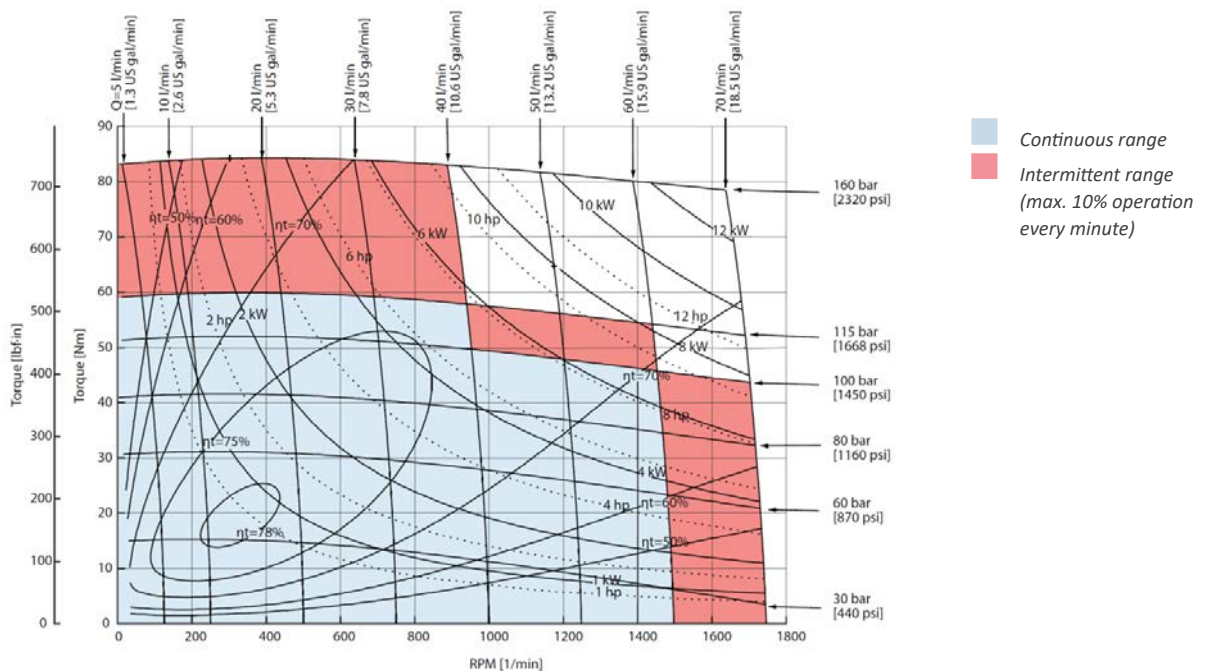


Figure 15 OMP X 40 function diagram

WHITE can accept no responsibility for possible errors in catalogues, brochures, and other printed material. WHITE reserves the right to alter its products without notice. This also applies to products already on order provided that such alterations can be made without subsequent changes being necessary in specifications already agreed.

All trademarks in this material are the property of the respective companies. WHITE and the WHITE logotype are trademarks of WHITE Drive Motors & Steering LLC and WHITE Drive Motors and Steering Sp. z o.o..

All rights reserved.

[May 2025], Rev. 02

Archivierung: 11/2025

OMP X 50

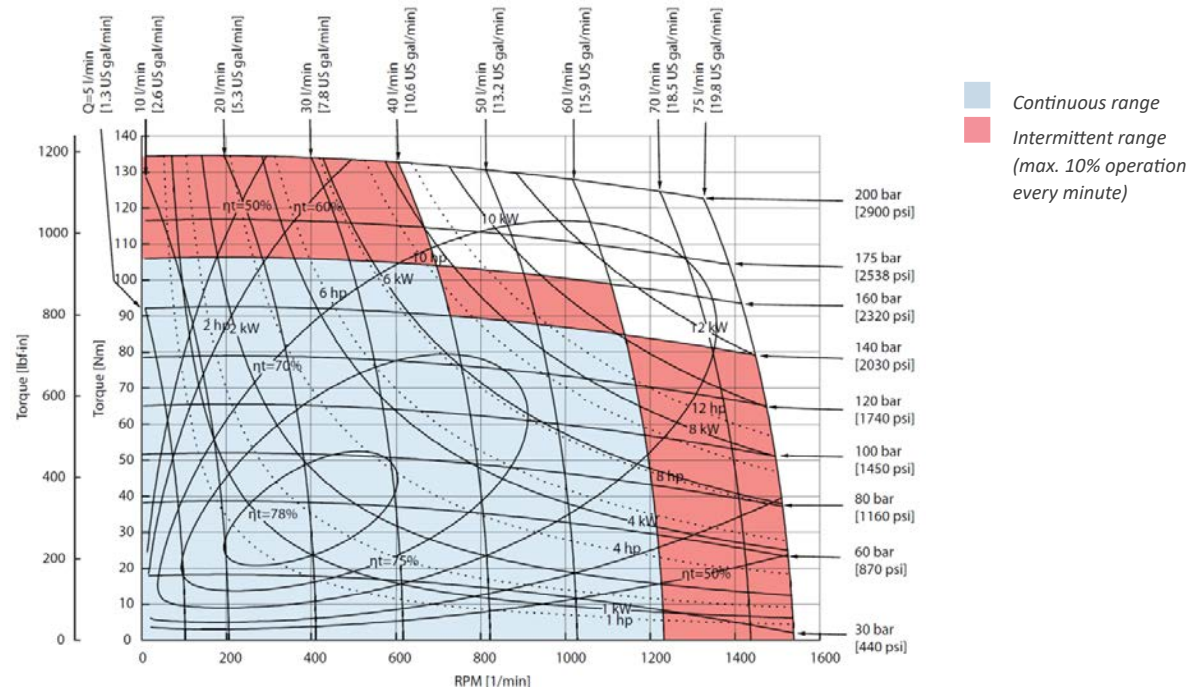


Figure 16 OMP X 50 function diagram

OMP X 80

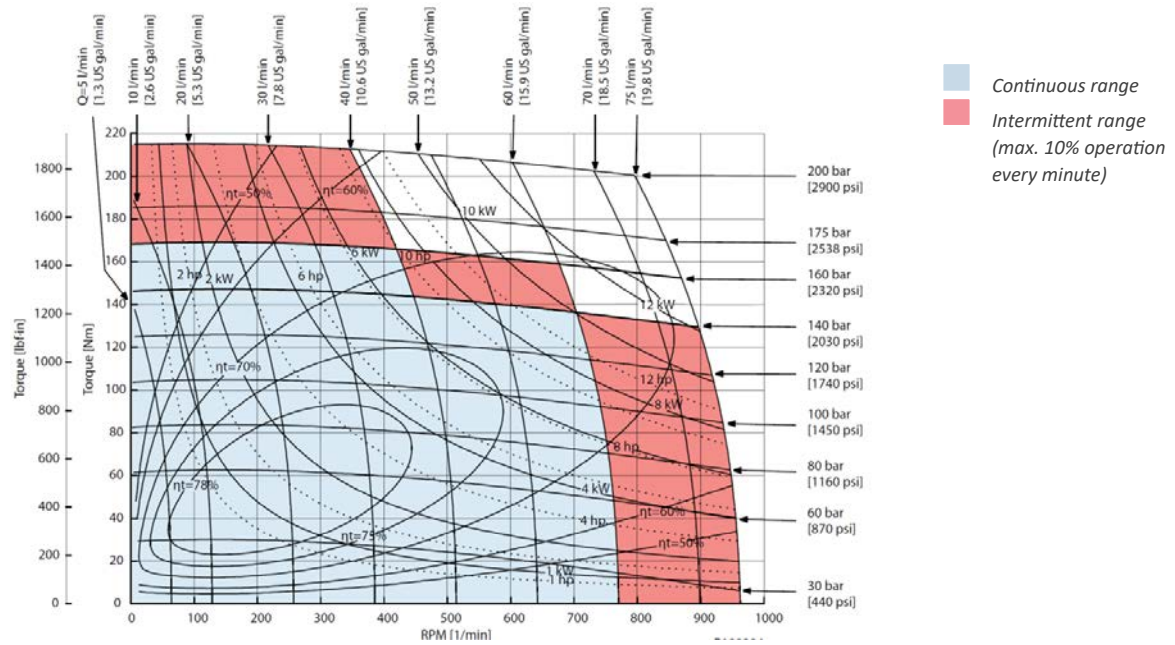


Figure 17 OMP X 80 function diagram

WHITE can accept no responsibility for possible errors in catalogues, brochures, and other printed material. WHITE reserves the right to alter its products without notice. This also applies to products already on order provided that such alterations can be made without subsequent changes being necessary in specifications already agreed.

All trademarks in this material are the property of the respective companies. WHITE and the WHITE logotype are trademarks of WHITE Drive Motors & Steering LLC and WHITE Drive Motors and Steering Sp. z o.o..

All rights reserved.

[May 2025], Rev. 02

Archivierung: 11/2025

OMP X 100

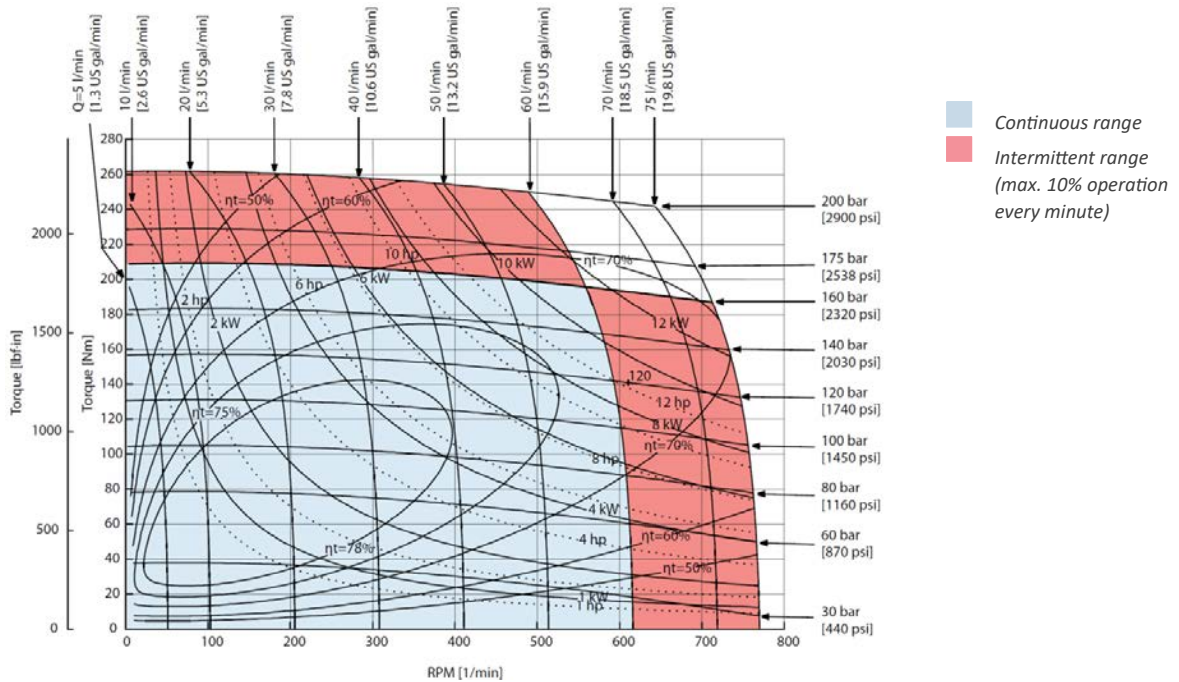


Figure 18 OMP X 100 function diagram

OMP X 125

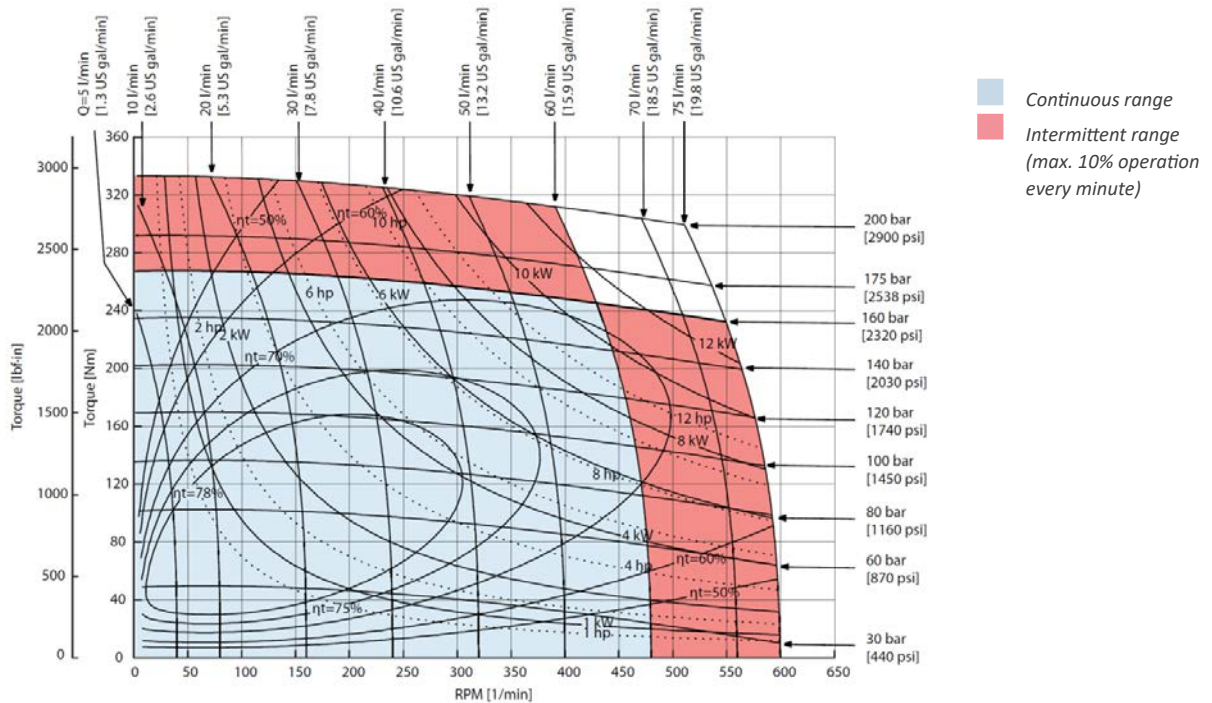


Figure 19 OMP X 125 function diagram

WHITE can accept no responsibility for possible errors in catalogues, brochures, and other printed material. WHITE reserves the right to alter its products without notice. This also applies to products already on order provided that such alterations can be made without subsequent changes being necessary in specifications already agreed.

All trademarks in this material are the property of the respective companies. WHITE and the WHITE logotype are trademarks of WHITE Drive Motors & Steering LLC and WHITE Drive Motors and Steering Sp. z o.o.

All rights reserved.

[May 2025], Rev. 02

Archivierung: 11/2025

OMP X 160

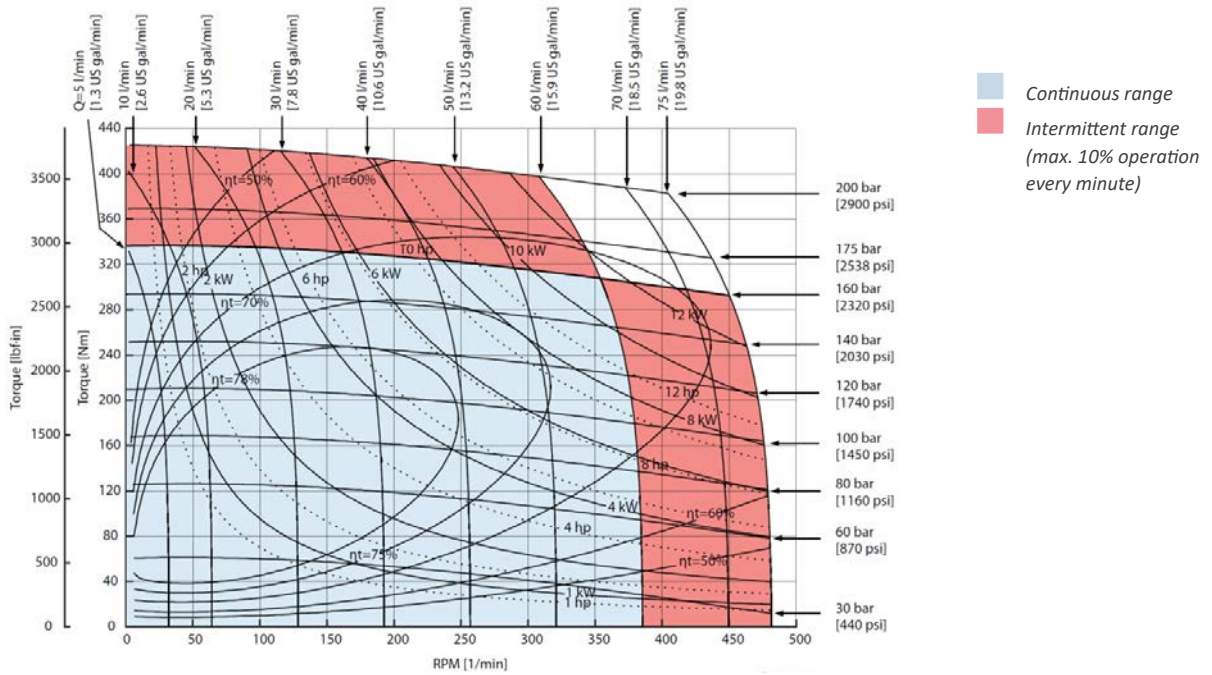


Figure 20 OMP X 160 function diagram

OMP X 200

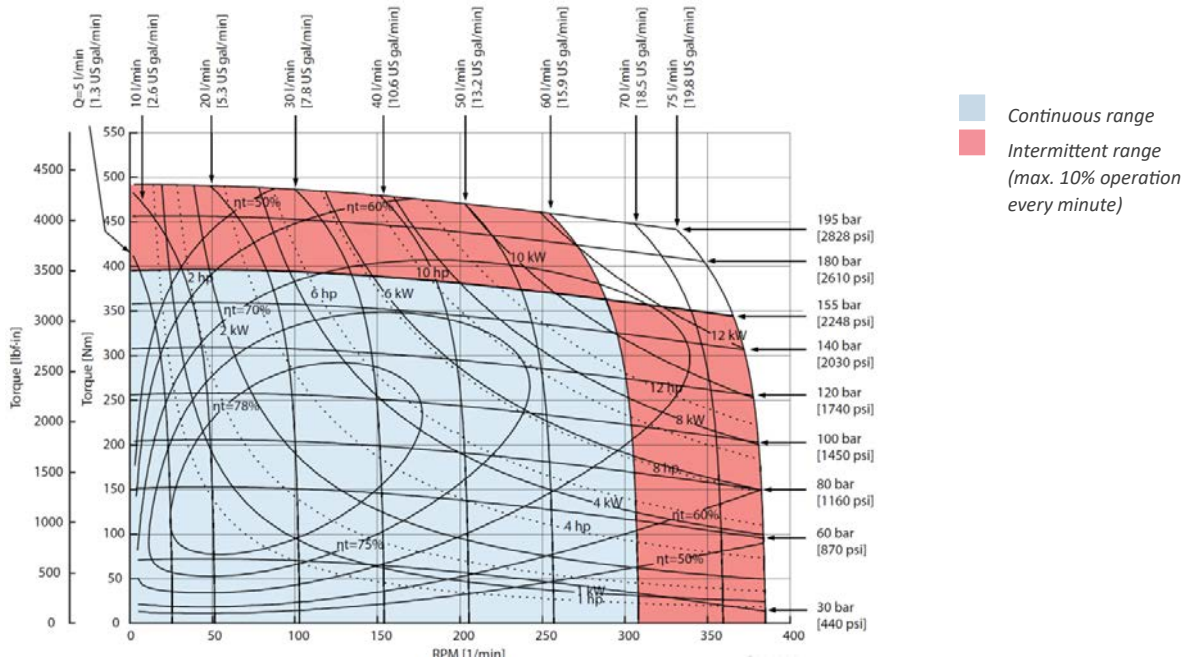


Figure 21 OMP X 200 function diagram

WHITE can accept no responsibility for possible errors in catalogues, brochures, and other printed material. WHITE reserves the right to alter its products without notice. This also applies to products already on order provided that such alterations can be made without subsequent changes being necessary in specifications already agreed.

All trademarks in this material are the property of the respective companies. WHITE and the WHITE logotype are trademarks of WHITE Drive Motors & Steering LLC and WHITE Drive Motors and Steering Sp. z o.o.

All rights reserved.

[May 2025], Rev. 02

Archivierung: 11/2025

OMP X 250

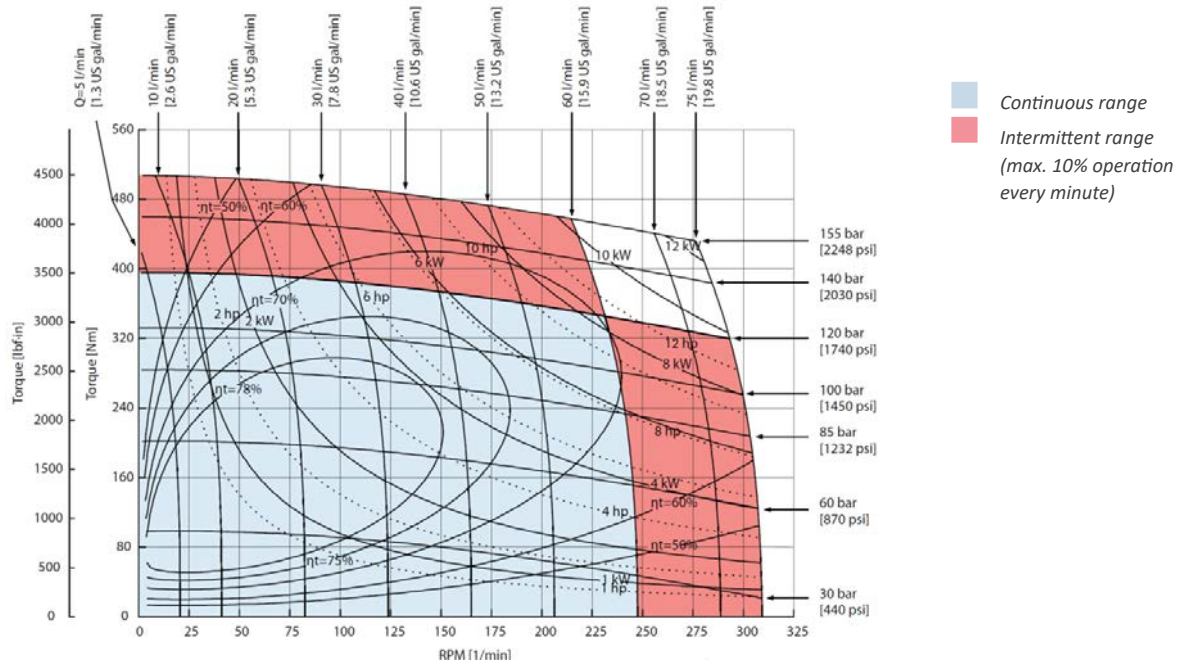


Figure 22 OMP X 250 function diagram

OMP X 315

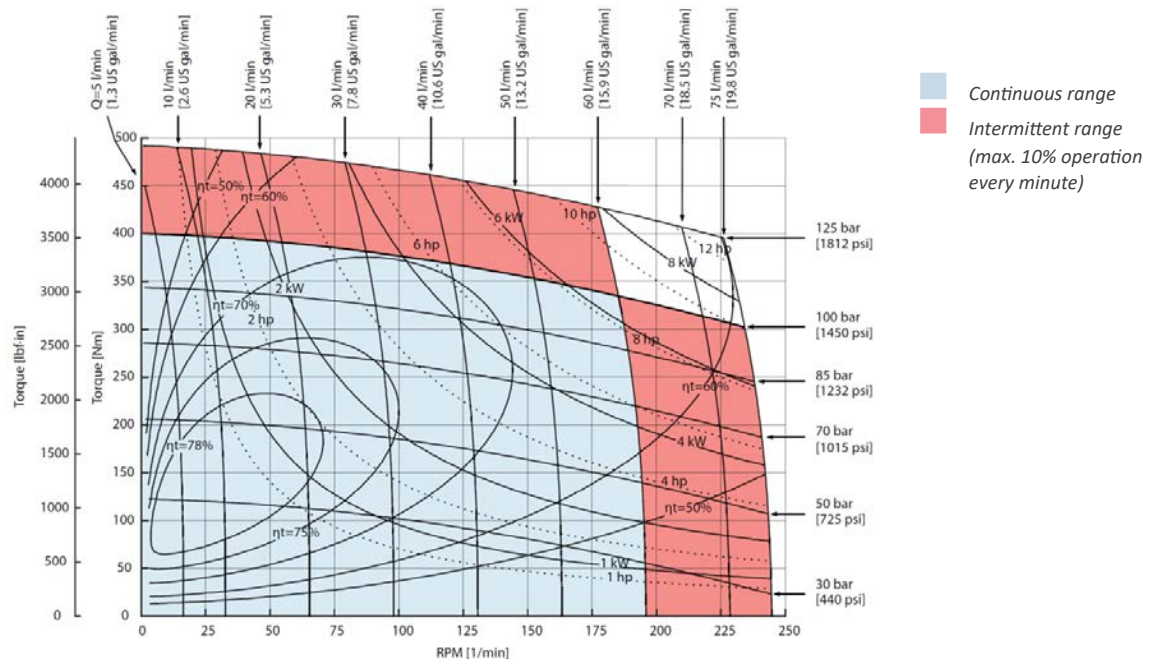


Figure 23 OMP X 315 function diagram

WHITE can accept no responsibility for possible errors in catalogues, brochures, and other printed material. WHITE reserves the right to alter its products without notice. This also applies to products already on order provided that such alterations can be made without subsequent changes being necessary in specifications already agreed.

All trademarks in this material are the property of the respective companies. WHITE and the WHITE logotype are trademarks of WHITE Drive Motors & Steering LLC and WHITE Drive Motors and Steering Sp. z o.o..

All rights reserved.

[May 2025], Rev. 02

Archivierung: 11/2025

OMP X 400

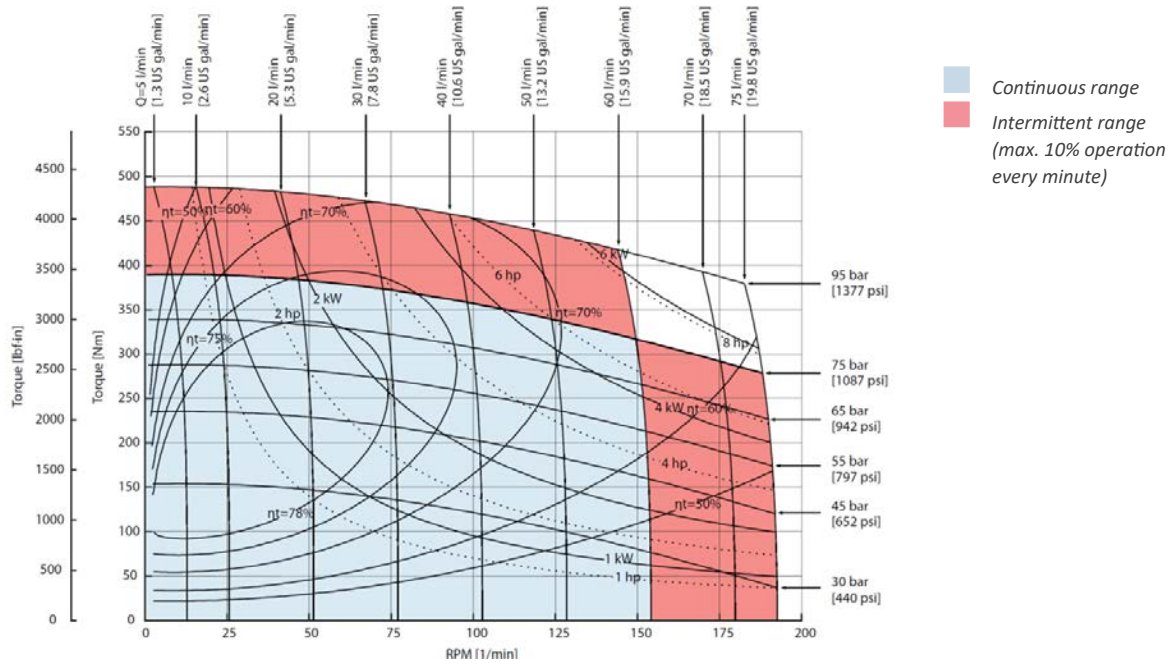


Figure 24 OMP X 400 function diagram

WHITE can accept no responsibility for possible errors in catalogues, brochures, and other printed material. WHITE reserves the right to alter its products without notice. This also applies to products already on order provided that such alterations can be made without subsequent changes being necessary in specifications already agreed.

All trademarks in this material are the property of the respective companies. WHITE and the WHITE logotype are trademarks of WHITE Drive Motors & Steering LLC and WHITE Drive Motors and Steering Sp. z o.o..

All rights reserved.

| May 2025 |, Rev. 02

Archivierung: 11/2025

Chapter 4

OMP X dimensions

Topics:

- EU version side port offset with 2-hole oval mounting flange (A2)
- EU version end port with 2-hole oval mounting flange (A2)
- EU version OMPW X and OMPW X N motors wheel type
- US version side port offset with 2-hole oval mounting flange (A2)
- US version side port aligned with 2-hole oval mounting flange (A2)
- US version side port aligned with square mounting flange (C-flange)

WHITE can accept no responsibility for possible errors in catalogues, brochures, and other printed material. WHITE reserves the right to alter its products without notice. This also applies to products already on order provided that such alterations can be made without subsequent changes being necessary in specifications already agreed.

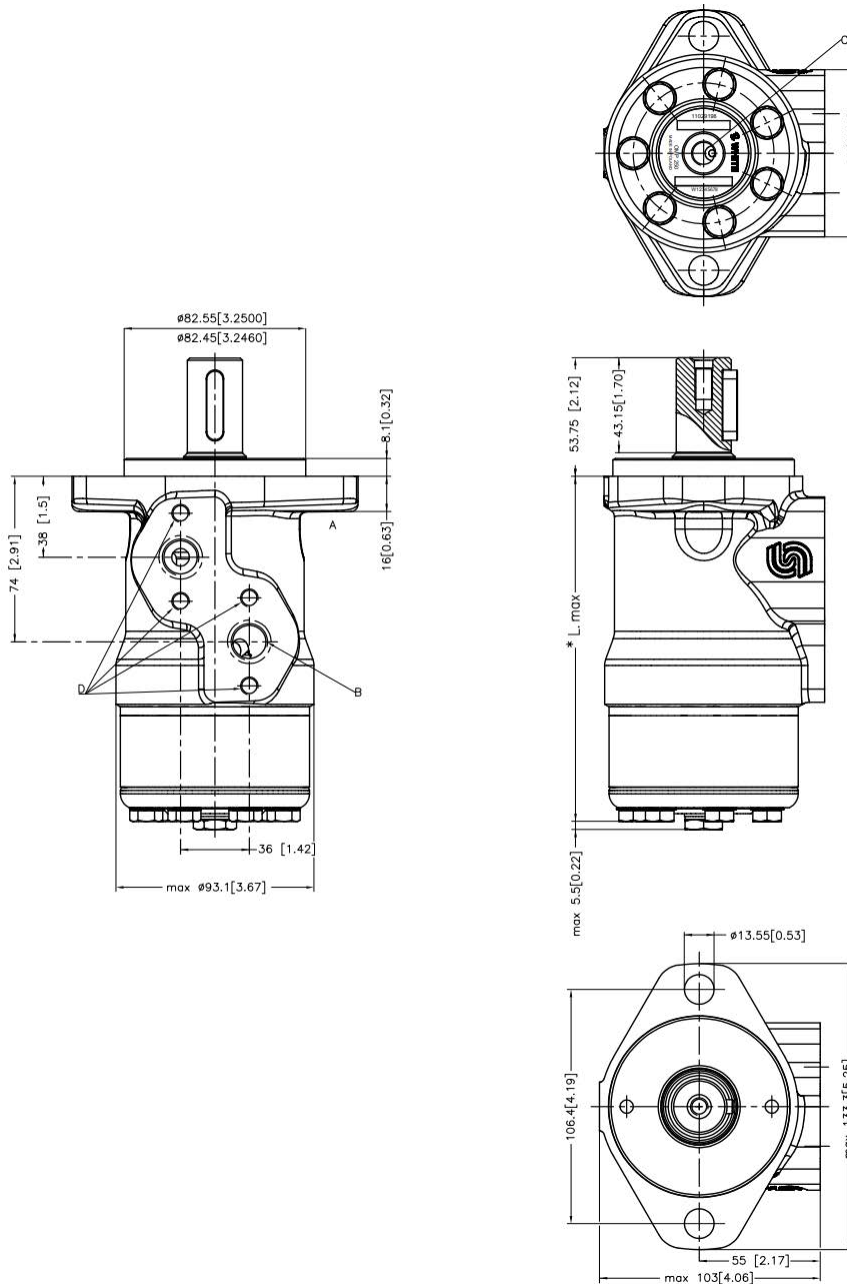
All trademarks in this material are the property of the respective companies. WHITE and the WHITE logotype are trademarks of WHITE Drive Motors & Steering LLC and WHITE Drive Motors and Steering Sp. z o.o..

All rights reserved.

| May 2025 |, Rev. 02

Archivierung: 11/2025

EU version side port offset with 2-hole oval mounting flange (A2)



Port connections:

- A, B** Main ports: G 1/2; min 15 mm [0.59 in] deep
- C** Drain port: G 1/4; 11.5 mm [0.45 in]
- D** Thread: M8; 13 mm [0.51 in] deep

Figure 25 OMP X side port offset A2-flange EU version

Dimension mm [in]	OMP X													
	25	32	36	40	50	60	80	100	125	160	200	250	315	400
L_{max.}	130.8 [5.15]	131.9 [5.2]	132.5 [5.22]	133.2 [5.25]	133.2 [5.25]	134.6 [5.30]	137.1 [5.40]	139.7 [5.50]	143.4 [5.65]	147.5 [5.81]	152.7 [6.02]	159.2 [6.27]	167.6 [6.6]	178.7 [7.04]

Table 5 OMP X side port offset A2-flange EU version dimensions

WHITE can accept no responsibility for possible errors in catalogues, brochures, and other printed material. WHITE reserves the right to alter its products without notice. This also applies to products already on order provided that such alterations can be made without subsequent changes being necessary in specifications already agreed.

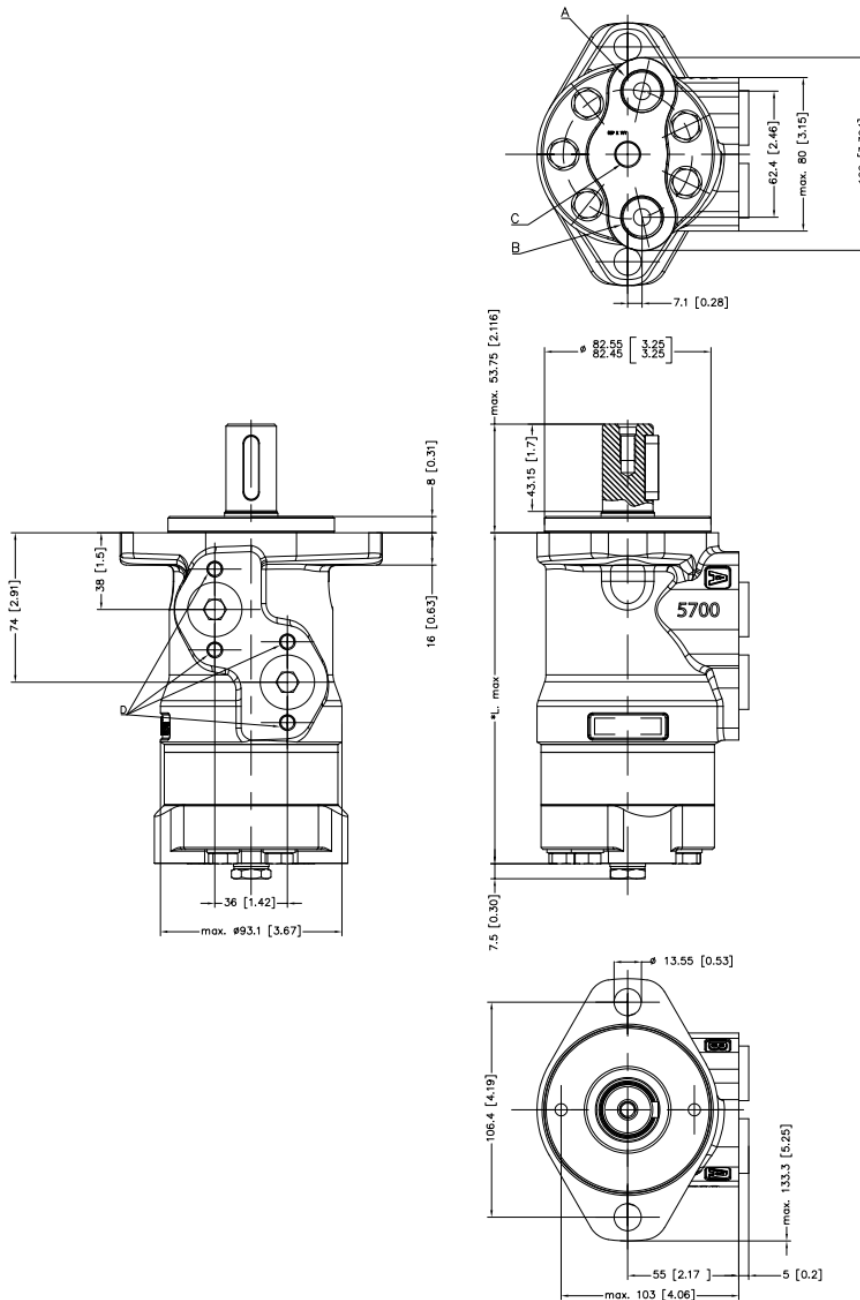
All trademarks in this material are the property of the respective companies. WHITE and the WHITE logotype are trademarks of WHITE Drive Motors & Steering LLC and WHITE Drive Motors and Steering Sp. z o.o.

All rights reserved.

| May 2025 |, Rev. 02

Archivierung: 11/2025

EU version end port with 2-hole oval mounting flange (A2)



Port connections:

- A, B** Main ports: G 1/2; min 15 mm [0.59 in] deep
- C** Drain port: G 1/4; 11.5 mm [0.45 in]
- D** Thread: M8; 13 mm [0.51 in] deep

Figure 26 OMP X end port A2-flange EU version

Dimension mm [in]	OMP X								
	40	50	80	100	160	200	250	315	400
L_{max.}	146.8 [5.78]	146.8 [5.78]	150.7 [5.94]	153.3 [6.04]	161.1 [6.35]	166.3 [6.55]	172.8 [6.81]	181.2 [7.14]	192.2 [7.58]

Table 6 OMP X end port A2-flange EU version dimensions

WHITE can accept no responsibility for possible errors in catalogues, brochures, and other printed material. WHITE reserves the right to alter its products without notice. This also applies to products already on order provided that such alterations can be made without subsequent changes being necessary in specifications already agreed.

All trademarks in this material are the property of the respective companies. WHITE and the WHITE logotype are trademarks of WHITE Drive Motors & Steering LLC and WHITE Drive Motors and Steering Sp. z o.o..

All rights reserved.

|May 2025|, Rev. 02

Archivierung: 11/2025

EU version OMPW X and OMPW X N motors wheel type

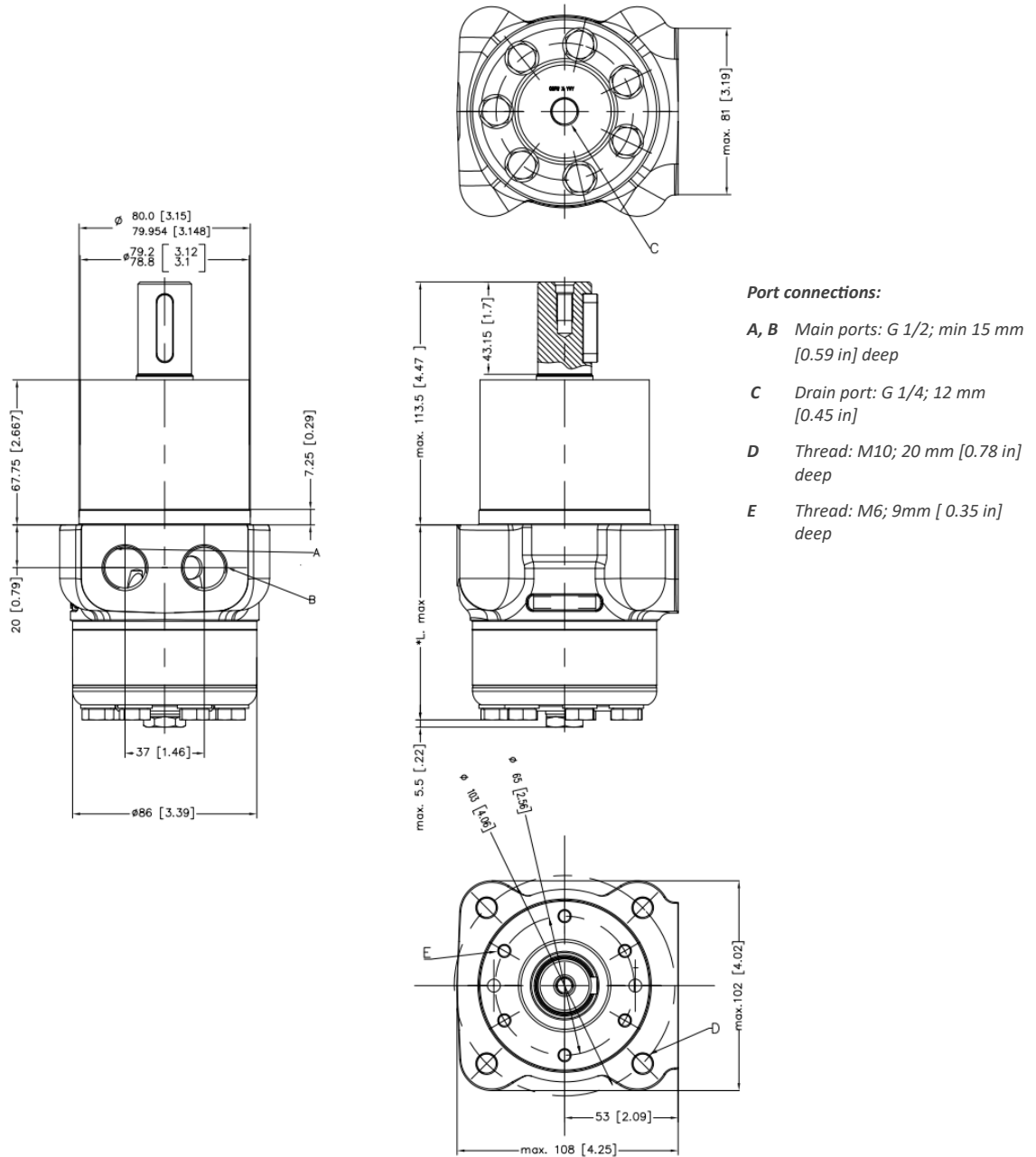


Figure 27 OMPW X and OMPW X N EU version

Dimension mm [in]	OMPW X OMPW X N								
	50	80	100	125	160	200	250	315	400
L_{max.}	73.4 [2.89]	77.3 [3.05]	79.9 [3.15]	83.7 [3.30]	87.7 [3.46]	92.9 [3.66]	99.4 [3.92]	107.8 [4.25]	118.9 [4.69]

Table 7 OMPW X and OMPW X N EU version dimensions

WHITE can accept no responsibility for possible errors in catalogues, brochures, and other printed material. WHITE reserves the right to alter its products without notice. This also applies to products already on order provided that such alterations can be made without subsequent changes being necessary in specifications already agreed.

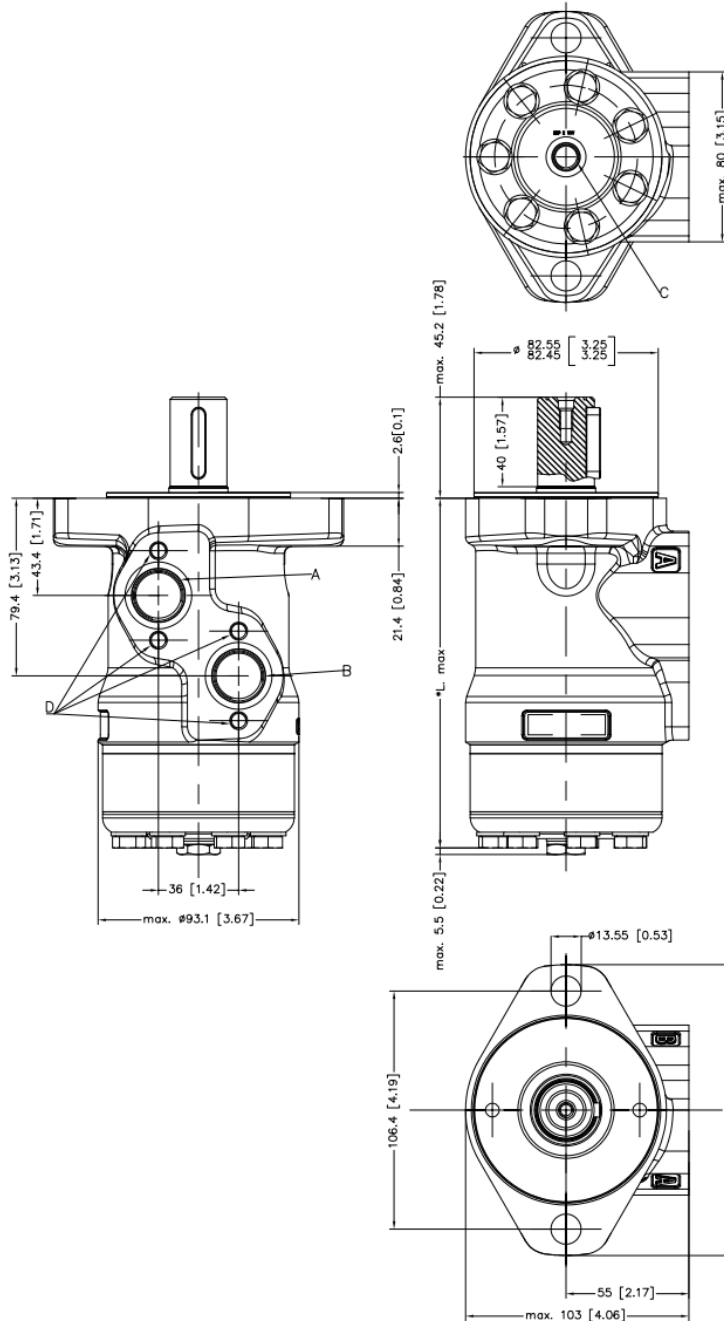
All trademarks in this material are the property of the respective companies. WHITE and the WHITE logotype are trademarks of WHITE Drive Motors & Steering LLC and WHITE Drive Motors and Steering Sp. z o.o..

All rights reserved.

[May 2025], Rev. 02

Archivierung: 11/2025

US version side port offset with 2-hole oval mounting flange (A2)



Port connections:

- A, B** Main ports: 7/8 - 14 UNF;
min. 16.7 mm [0.66 in] deep
- C** Drain port: 7/16 - 20 UNF;
11.5 mm [0.45 in] deep
- D** Thread: M8; 13 mm [0.51 in] deep

Figure 28 OMP X side port offset A2- flange (US version)

Dimension mm [in]	OMP X										
	25	32	36	40	50	80	100	160	200	315	400
L_{max}	136.2 [5.37]	137.3 [5.41]	137.9 [5.43]	138.6 [5.46]	138.6 [5.46]	142.5 [5.62]	145.1 [5.72]	152.9 [6.02]	158.1 [6.82]	173 [6.82]	184.1 [7.25]

Table 8 OMP X side port offset A2- flange (US version) dimensions

WHITE can accept no responsibility for possible errors in catalogues, brochures, and other printed material. WHITE reserves the right to alter its products without notice. This also applies to products already on order provided that such alterations can be made without subsequent changes being necessary in specifications already agreed.

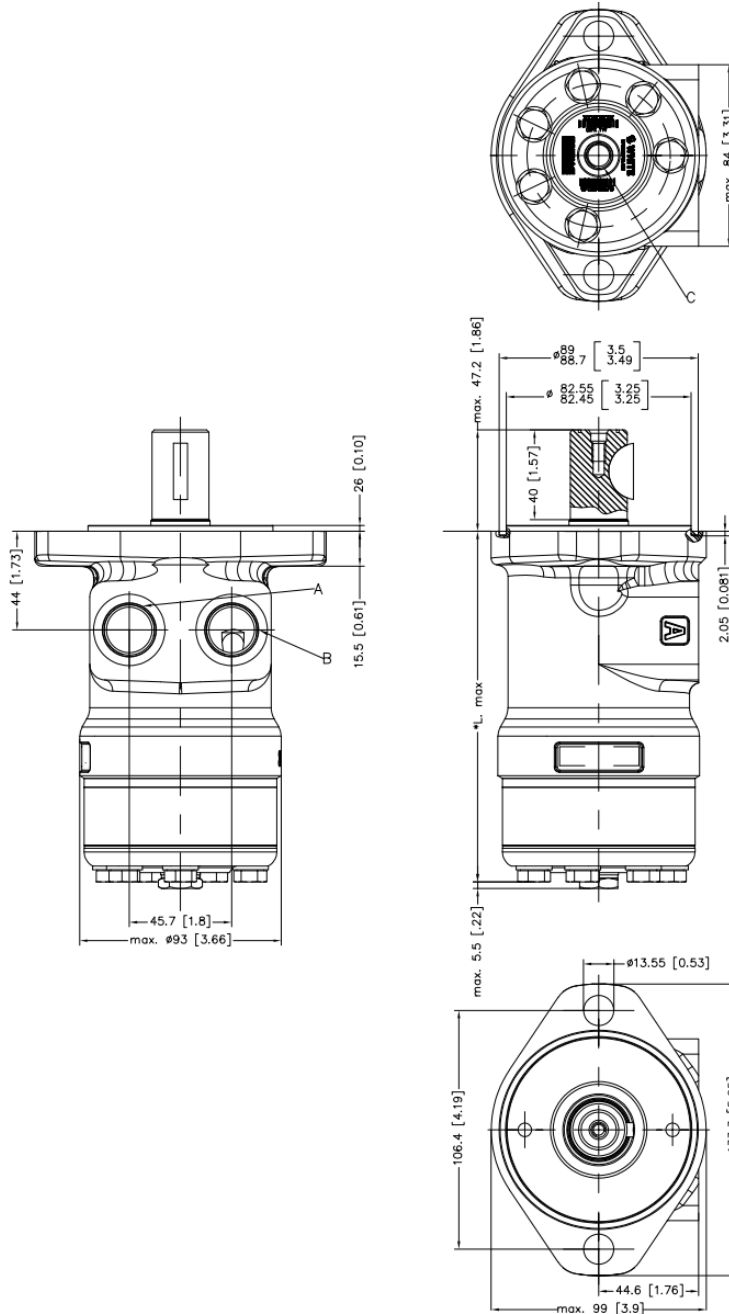
All trademarks in this material are the property of the respective companies. WHITE and the WHITE logotype are trademarks of WHITE Drive Motors & Steering LLC and WHITE Drive Motors and Steering Sp. z o.o..

All rights reserved.

| May 2025 |, Rev. 02

Archivierung: 11/2025

US version side port aligned with 2-hole oval mounting flange (A2)



Port connections:

A, B Main ports: 7/8 - 14 UNF;
min. 16.7 mm [0.66 in] deep

C Drain port: 7/16 - 20 UNF;
11.5 mm [0.45 in] deep

Figure 29 OMP X side port aligned A2-flange (US version)

Dimension mm [in]	OMP X										
	32	36	40	50	80	100	125	160	200	315	400
L_{max.}	137.25 [5.4]	137.9 [5.43]	138.6 [5.46]	138.6 [5.46]	142.5 [5.62]	145.1 [5.72]	148.8 [5.86]	152.9 [6.02]	158.1 [6.82]	173 [6.82]	184.1 [7.25]

Table 9 OMP X side port aligned A2-flange (US version) dimensions

WHITE can accept no responsibility for possible errors in catalogues, brochures, and other printed material. WHITE reserves the right to alter its products without notice. This also applies to products already on order provided that such alterations can be made without subsequent changes being necessary in specifications already agreed.

All trademarks in this material are the property of the respective companies. WHITE and the WHITE logotype are trademarks of WHITE Drive Motors & Steering LLC and WHITE Drive Motors and Steering Sp. z o.o..

All rights reserved.

|May 2025|, Rev. 02

Archivierung: 11/2025

Chapter 5

OMR X Technical Data

Topics:

- OMR X motor specifications
- High Pressure Shaft Seal in OMP X and OMR X motors
- Pressure drop
- Oil flow in drain line
- Direction of shaft rotation: clockwise
- OMP X and OMR X shaft loads
- OMR X Model Code

WHITE can accept no responsibility for possible errors in catalogues, brochures, and other printed material. WHITE reserves the right to alter its products without notice. This also applies to products already on order provided that such alterations can be made without subsequent changes being necessary in specifications already agreed.

All trademarks in this material are the property of the respective companies. WHITE and the WHITE logotype are trademarks of WHITE Drive Motors & Steering LLC and WHITE Drive Motors and Steering Sp. z o.o..

All rights reserved.

| May 2025 |, Rev. 02

Archivierung: 11/2025

OMR X motor specifications

Type			OMR X											
Motor size			36	50	65	80	100	125	160	200	250	315	375	400
Geometric displacement	cm ³		36.9	51.6	64.9	80.3	99.8	124.1	155.4	198.2	248.1	310.1	363.5	390.7
	[in ³]		[2.25]	[3.16]	[3.96]	[4.91]	[6.11]	[7.57]	[9.48]	[12.09]	[15.14]	[18.92]	[22.18]	[23.84]
Maximum speed	min ⁻¹	cont.	800	775	770	750	600	475	385	305	240	195	165	155
	[rpm]	int. ¹⁾	1000	970	620	940	750	600	480	380	300	245	205	195
Maximum torque	N•m [lbf•in]	cont.	80	100	135	215	275	330	380	400	400	400	400	400
			[710]	[890]	[1195]	[1900]	[2435]	[2920]	[3365]	[3540]	[3540]	[3540]	[3540]	[3540]
		int. ¹⁾	95	120	155	235	300	360	435	480	540	550	550	480
			[840]	[1060]	[1372]	[2080]	[2655]	[3185]	[3580]	[4250]	[4780]	[4870]	[4870]	[4250]
Maximum output	kW [hp]	cont.	7.6	7.0	6.0	14.0	14.0	14.0	12.6	10.5	8.8	7.0	5.6	4.9
			[10.2]	[9.4]	[8.2]	[18.8]	[18.8]	[18.8]	[16.9]	[14]	[11.7]	[9.4]	[7.5]	[6.6]
		int. ¹⁾	9.3	8.8	8.0	15.8	17.5	17.5	15.8	13.1	10.5	8.9	7.8	6.1
			[12.5]	[11.7]	[10.9]	[21.1]	[23.5]	[23.5]	[21.1]	[17.5]	[14.1]	[11.9]	[10.5]	[8.2]
Maximum pressure drop.	bar [psi]	cont.	150	150	150	200	200	200	180	150	125	100	80	70
			[2175]	[2175]	[2175]	[2900]	[2900]	[2900]	[2610]	[2175]	[1815]	[1450]	[1160]	[1015]
		int. ¹⁾	175	175	175	225	225	225	215	195	170	140	115	90
			[2540]	[2540]	[2540]	[3260]	[3260]	[3260]	[3120]	[2830]	[2465]	[2030]	[1670]	[1305]
Maximum oil flow	l/min [US gal/ min]	cont.	30	40	40	60	60	60	60	60	60	60	60	60
			[7.9]	[10.6]	[10.6]	[15.9]	[15.9]	[15.9]	[15.9]	[15.9]	[15.9]	[15.9]	[15.9]	[15.9]
		int. ¹⁾	37	50	50	75	75	75	75	75	75	75	75	75
			[9.8]	[13.2]	[13.2]	[19.8]	[19.8]	[19.8]	[19.8]	[19.8]	[19.8]	[19.8]	[19.8]	[19.8]
Maximum starting pressure with unloaded shaft	bar [psi]		10	10	10	10	10	10	10	10	7	7	7	5
			[145]	[145]	[145]	[145]	[145]	[145]	[145]	[145]	[145]	[100]	[100]	[100]
Minimum starting torque	N•m [lbf•in]	cont.	60	85	110	190	230	295	335	350	370	370	335	325
			[530]	[750]	[974]	[1680]	[2035]	[2610]	[2965]	[3100]	[3275]	[3275]	[2965]	[2875]
		int. ¹⁾	70	100	128	215	255	335	400	460	500	515	480	420
			[620]	[890]	[1133]	[1900]	[2255]	[2965]	[3540]	[4070]	[4425]	[4560]	[4250]	[3715]

Table 11 OMR X motor specification

- 1) Maximum torque values for the different output shaft can be found in [OMP X and OMR X shaft versions](#).
- 2) Intermittent operation, permissible values may occur for max. 10% of every minute.

Maximum pressure

Type			Maximum inlet pressure	Maximum return pressure with drain line
OMR X	bar [psi]	cont.	200 [2900]	200 [2900]
		int.	225 [3260]	225 [3260]

Table 12 OMR X Pressure limits

WHITE can accept no responsibility for possible errors in catalogues, brochures, and other printed material. WHITE reserves the right to alter its products without notice. This also applies to products already on order provided that such alterations can be made without subsequent changes being necessary in specifications already agreed.

All trademarks in this material are the property of the respective companies. WHITE and the WHITE logotype are trademarks of WHITE Drive Motors & Steering LLC and WHITE Drive Motors and Steering Sp. z o.o..

All rights reserved.

[May 2025], Rev. 02

Archivierung: 11/2025

High Pressure Shaft Seal in OMP X and OMR X motors

For information, see [OMP X shaft and port thread version](#).

Pressure drop

The curve applies to an unloaded motor and an oil viscosity of 35 mm²/s [165 SUS].

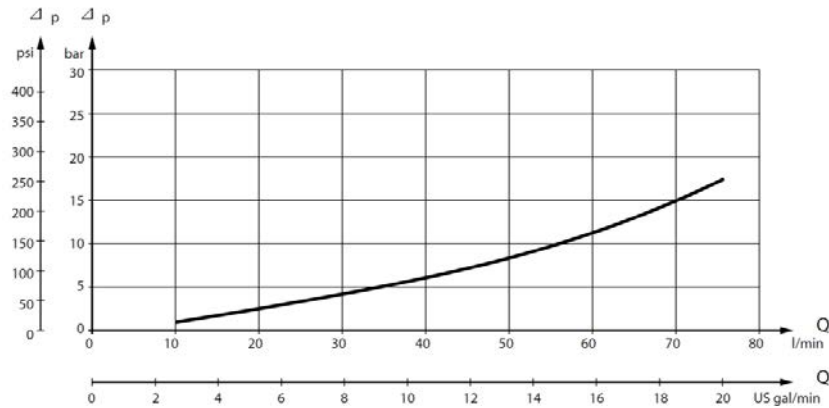


Figure 31 OMR X pressure drop

Oil flow in drain line

Pressure drop bar [psi]	Viscosity mm ² /s [SUS]	Oil flow in drain line l/min [US gal/min]
100 [1450]	20 [100]	2.5 [0.66]
	35 [165]	1.8 [0.78]
140 [2030]	20 [100]	3.5 [0.78]
	35 [165]	2.8 [0.74]
	165 [165]	1.8 [0.74]

Table 13 OMR X Max. oil flow in the drain line at return pressure less 5-10 bar

Direction of shaft rotation: clockwise

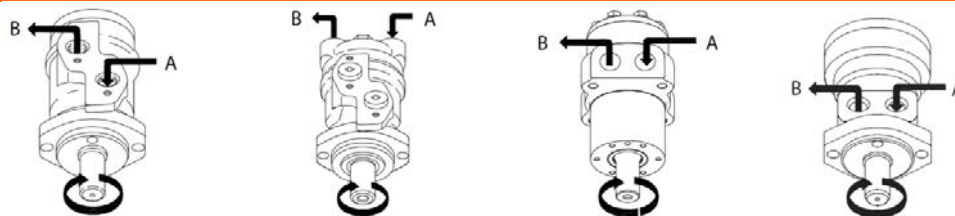


Figure 32 OMR X Direction of shaft rotation: clockwise

OMP X and OMR X shaft loads

For information see [Shaft loads](#)

WHITE can accept no responsibility for possible errors in catalogues, brochures, and other printed material. WHITE reserves the right to alter its products without notice. This also applies to products already on order provided that such alterations can be made without subsequent changes being necessary in specifications already agreed.

All trademarks in this material are the property of the respective companies. WHITE and the WHITE logotype are trademarks of WHITE Drive Motors & Steering LLC and WHITE Drive Motors and Steering Sp. z o.o..

All rights reserved.

| May 2025 |, Rev. 02

Archivierung: 11/2025

OMR X Model Code

The coding system has been developed to identify the construction options for the OMR X motors. The model code begins with the motor family and the remaining fields are defined to configure the motor with the desired features, all fields must be filled in.

Example: OMRX-200-NNN-B11-SO-A3-A11-C-E-B-1-N-N-NN-NNN-NNN-NNN-A-NN.

A – Main motor family

OMRX OMR X motor series

B – Motor displacement

Code	Displacement, cm ³ /rev [in ³ /rev]	Code	Displacement, cm ³ /rev [in ³ /rev]
036	36.9 [2.25]	200	198.2 [12.09]
050	51.6 [3.15]	250	248.1 [15.14]
080	80.3 [4.90]	315	310.1 [18.92]
100	99.8 [6.09]	375	363.5 [22.18]
125	124.1 [7.57]	400	390.7 [23.84]
160	155.4 [9.48]		

C – Motor type (Align with options: D, E and F)

NNN Standard motor
B13 Standard motor with needle bearing

D – Mounting type (Align with options: E and F)

B11 A2 flange; 82.5 Dia x 8 Pilot; 106.4 Dia. B.C.
B12 A2 flange; 82.5 Dia x 2.6 Pilot; 106.4 Dia. B.C.
C10 C flange; 44 Dia x 2.6 Pilot; 83 Dia. B.C.; 3/8-16 mounting

E – Port type (Align with options: D, F and G)

SO Side port – Offset
SA Side port – Aligned
EA End port

F – Main ports thread type

A3 G 1/2
A8 7/8-14 UNF
A9 1/2-14 NPTF
B7 M22 x 1,5 according to ISO 6149
C1 Manifold

G – Shaft type (Align with options: C, F and K)

A11 Cylindrical 25 mm with 8 mm key; M8 hole in shaft end
B11 Cylindrical 1 inch with 1/4 in key; M8 hole in shaft end
B12 Cylindrical 1 inch with 1/4 in key; 1/4-20UNC hole in shaft end
B13 Cylindrical 1 inch with Woodruff key; 1/4-20UNC hole in shaft end
B14 Cylindrical 1 inch with cross hole 10.3; 1/4-20UNC hole in shaft end
B15 Cylindrical 1 inch with cross hole 8.0
C11 Spline 7/8" – 13T
C13 1 inch 6B Spline; M8 hole in shaft end
C14 1 inch 6B Spline; 1/4-20UNC hole in shaft end
E10 Tapered 28.5 mm – 1:10
F10 Tapered 1" – 1:8, WK3/16x3/4

WHITE can accept no responsibility for possible errors in catalogues, brochures, and other printed material. WHITE reserves the right to alter its products without notice. This also applies to products already on order provided that such alterations can be made without subsequent changes being necessary in specifications already agreed.

All trademarks in this material are the property of the respective companies. WHITE and the WHITE logotype are trademarks of WHITE Drive Motors & Steering LLC and WHITE Drive Motors and Steering Sp. z o.o..

All rights reserved.

|May 2025|, Rev. 02

Archivierung: 11/2025

H – Shaft seal

C High pressure shaft seal - NBR

J- Dust seal

B Dust seal integrated in shaft seal plus seal guard

E Dust seal integrated in shaft seal

K – Drain port (Align with options: F and G)

B G1/4

D 7/16 – 20 UNF

K M12 x 1,5 according to ISO 6149

M No drain port due to EMD

L – Check valve

1 Yes

M – Brake release port

N None

N- Speed sensor

N None

A Prepared for EMD speed sensor

P - Painting

NN No paint

AA Black, 9005; Corr. class C3; Standard covering

AB Black, 9005; Corr. class C3; Surface covering

R - Valve option

NNN None

S – Specific visible features

NNN None

T – Specific non-visible features

NNN None

U – Packaging

A Single pack

V – Name tags: Motor and box

NN Name tag

In case of feature not included in model code, please contact with White customer service department.

WHITE can accept no responsibility for possible errors in catalogues, brochures, and other printed material. WHITE reserves the right to alter its products without notice. This also applies to products already on order provided that such alterations can be made without subsequent changes being necessary in specifications already agreed.

All trademarks in this material are the property of the respective companies. WHITE and the WHITE logotype are trademarks of WHITE Drive Motors & Steering LLC and WHITE Drive Motors and Steering Sp. z o.o..

All rights reserved.

| May 2025 |, Rev. 02

Archivierung: 11/2025

Chapter 6

OMR X function diagrams

Topics:

- OMR X 36
- OMR X 50
- OMR X 65
- OMR X 80
- OMR X 100
- OMR X 125
- OMR X 160
- OMR X 200
- OMR X 250
- OMR X 315
- OMR X 375
- OMR X 400

WHITE can accept no responsibility for possible errors in catalogues, brochures, and other printed material. WHITE reserves the right to alter its products without notice. This also applies to products already on order provided that such alterations can be made without subsequent changes being necessary in specifications already agreed.

All trademarks in this material are the property of the respective companies. WHITE and the WHITE logotype are trademarks of WHITE Drive Motors & Steering LLC and WHITE Drive Motors and Steering Sp. z o.o..

All rights reserved.

| May 2025 |, Rev. 02

Archivierung: 11/2025

OMR X 36

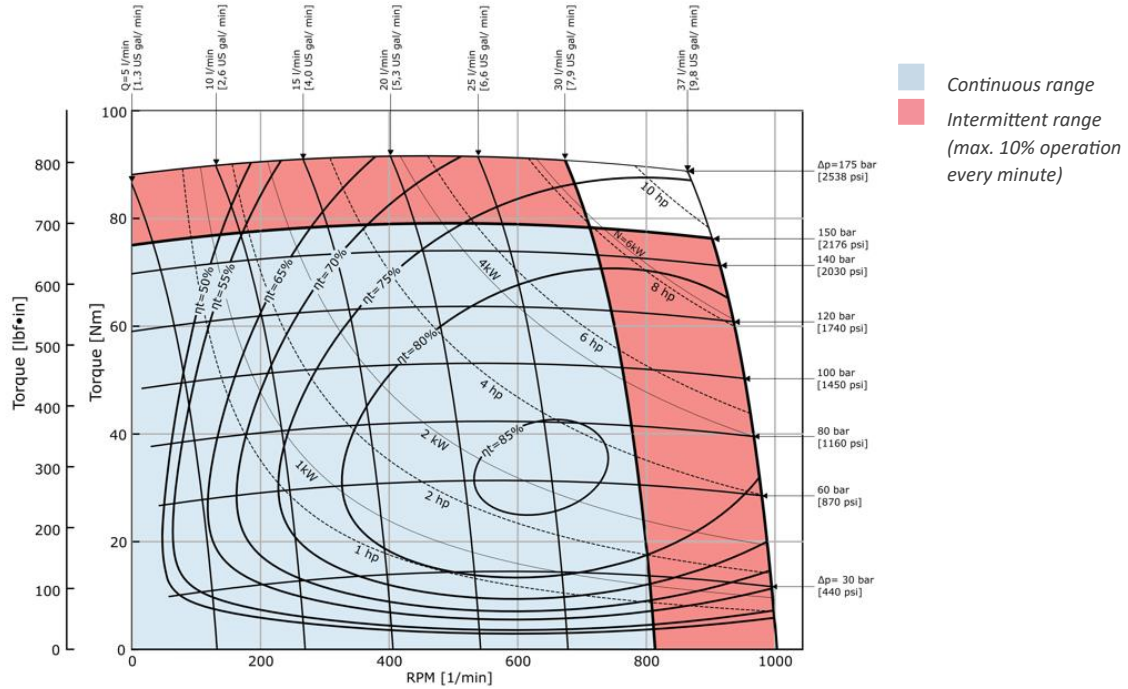


Figure 33 OMR X 36 function diagram

OMR X 50

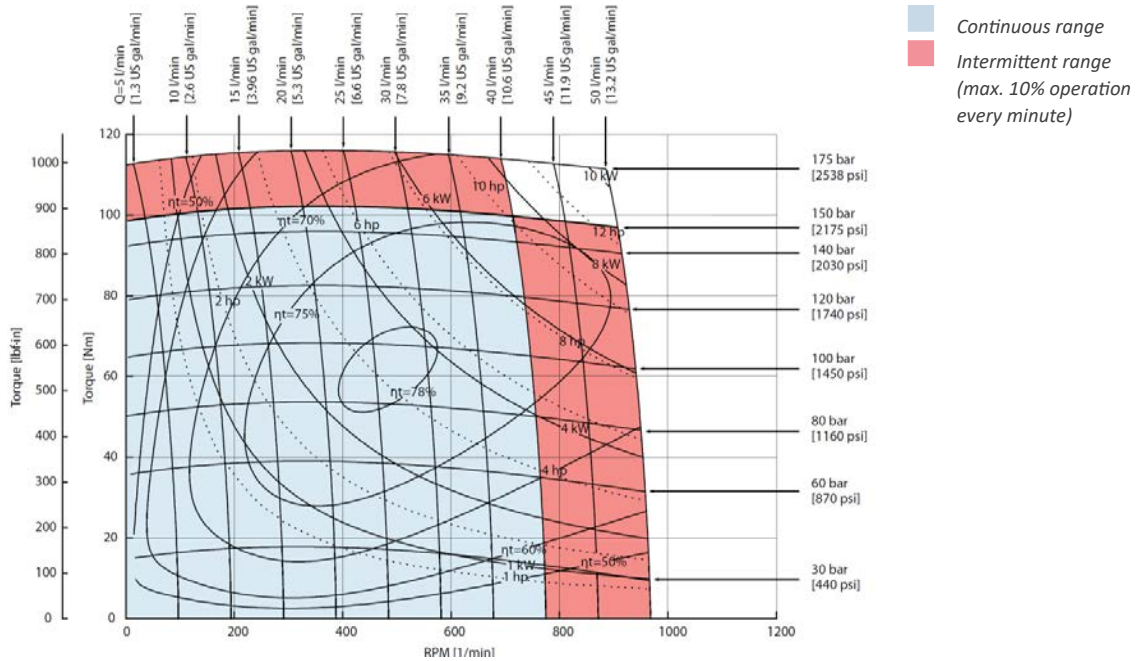


Figure 34 OMR X 50 function diagram

WHITE can accept no responsibility for possible errors in catalogues, brochures, and other printed material. WHITE reserves the right to alter its products without notice. This also applies to products already on order provided that such alterations can be made without subsequent changes being necessary in specifications already agreed.

All trademarks in this material are the property of the respective companies. WHITE and the WHITE logotype are trademarks of WHITE Drive Motors & Steering LLC and WHITE Drive Motors and Steering Sp. z o.o..

All rights reserved.

|May 2025|, Rev. 02

Archivierung: 11/2025

OMR X 65

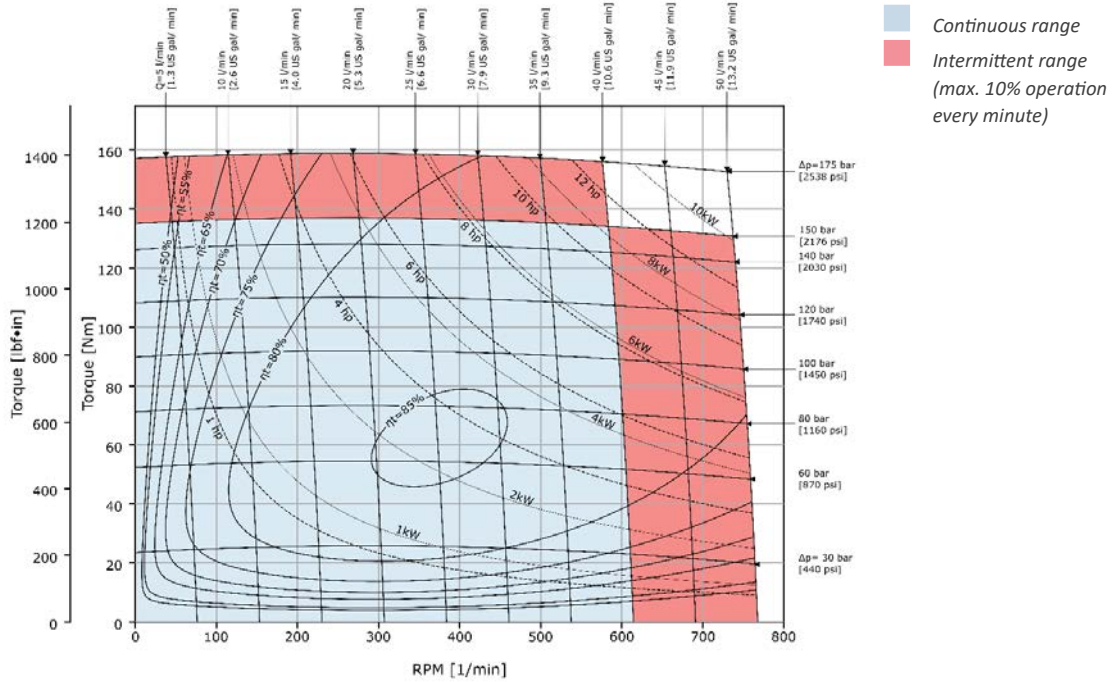


Figure 35 OMR X 65 function diagram

OMR X 80

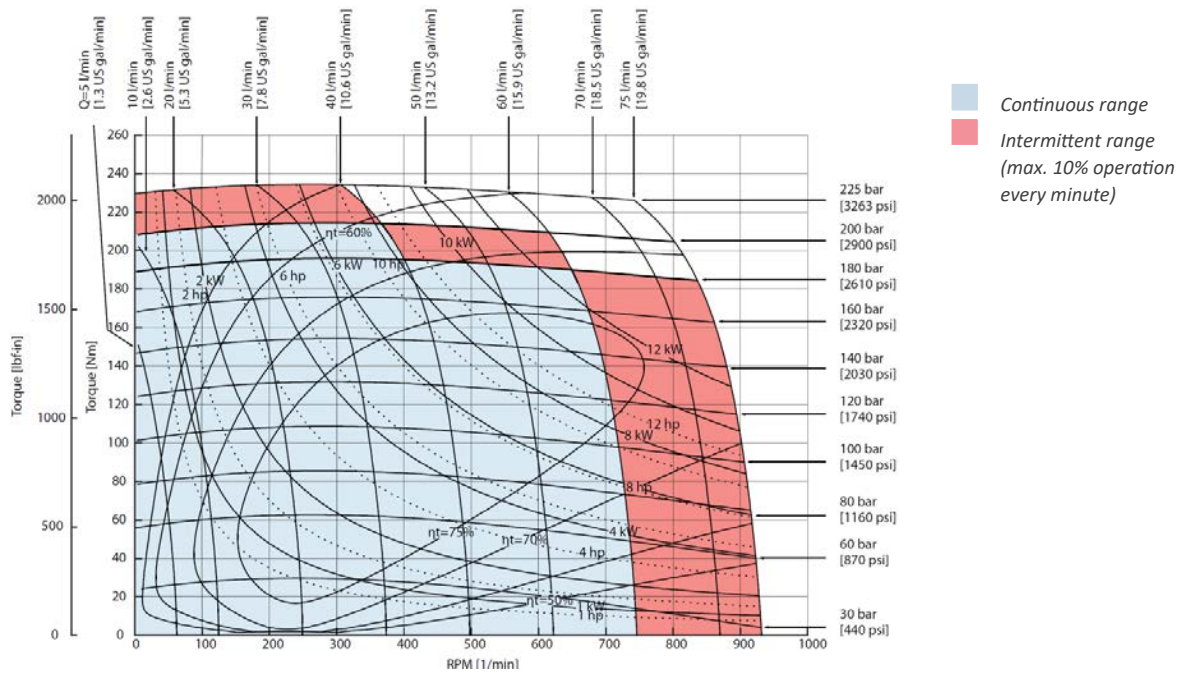


Figure 36 OMR X 80 function diagram

WHITE can accept no responsibility for possible errors in catalogues, brochures, and other printed material. WHITE reserves the right to alter its products without notice. This also applies to products already on order provided that such alterations can be made without subsequent changes being necessary in specifications already agreed.

All trademarks in this material are the property of the respective companies. WHITE and the WHITE logotype are trademarks of WHITE Drive Motors & Steering LLC and WHITE Drive Motors and Steering Sp. z o.o..

All rights reserved.

[May 2025], Rev. 02

Archivierung: 11/2025

OMR X 100

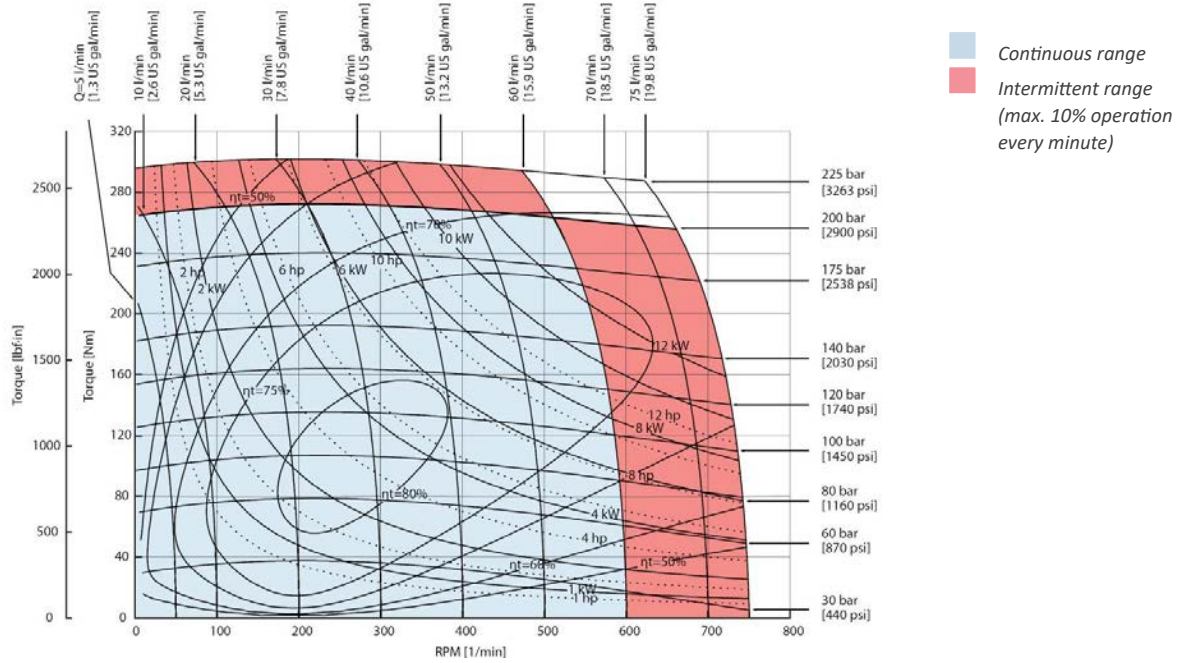


Figure 37 OMR X 100 function diagram

OMR X 125

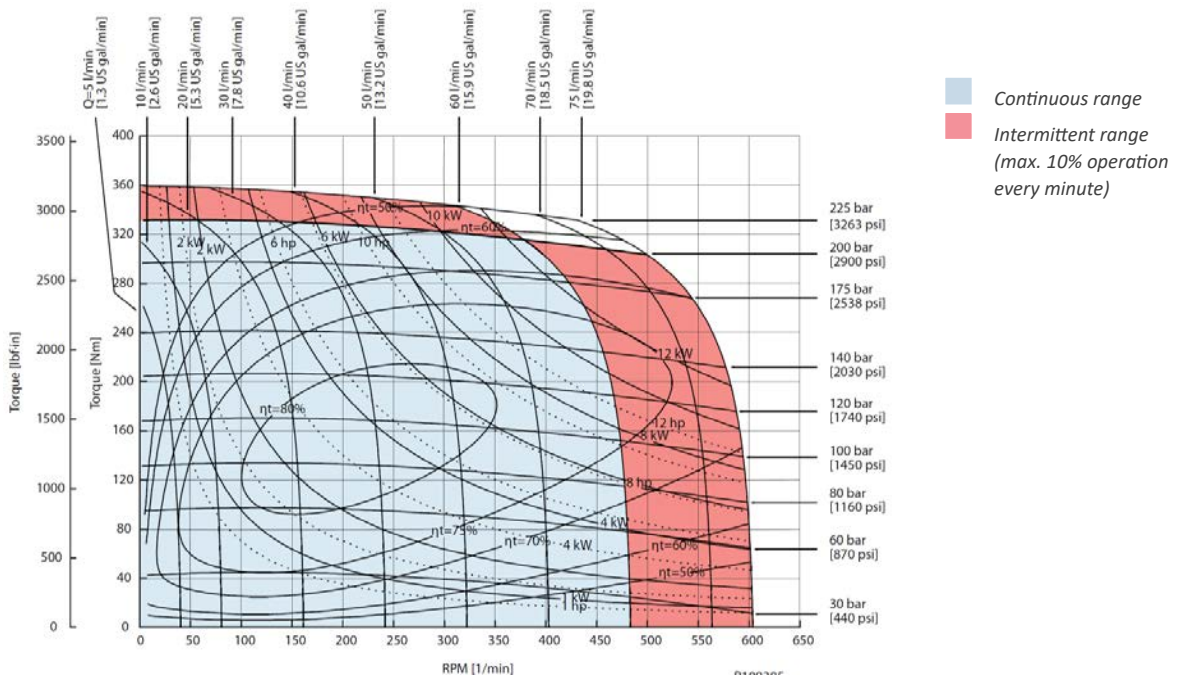


Figure 38 OMR X 125 function diagram

WHITE can accept no responsibility for possible errors in catalogues, brochures, and other printed material. WHITE reserves the right to alter its products without notice. This also applies to products already on order provided that such alterations can be made without subsequent changes being necessary in specifications already agreed.

All trademarks in this material are the property of the respective companies. WHITE and the WHITE logotype are trademarks of WHITE Drive Motors & Steering LLC and WHITE Drive Motors and Steering Sp. z o.o..

All rights reserved.

|May 2025|, Rev. 02

Archivierung: 11/2025

OMR X 160

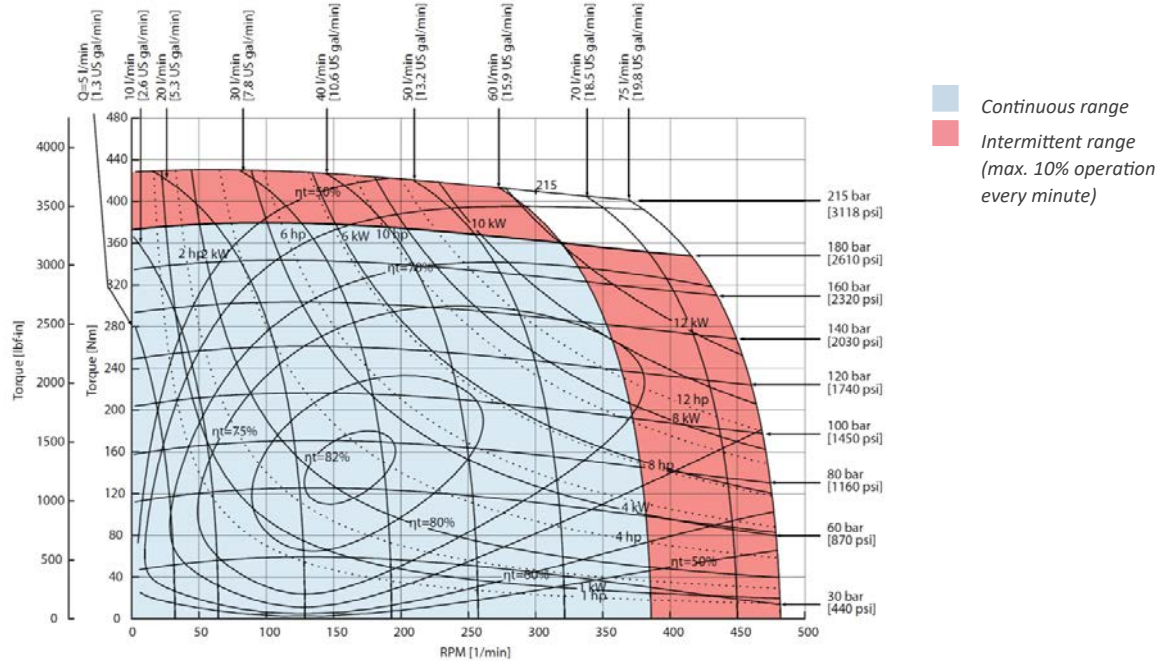


Figure 39 OMR X 160 function diagram

OMR X 200

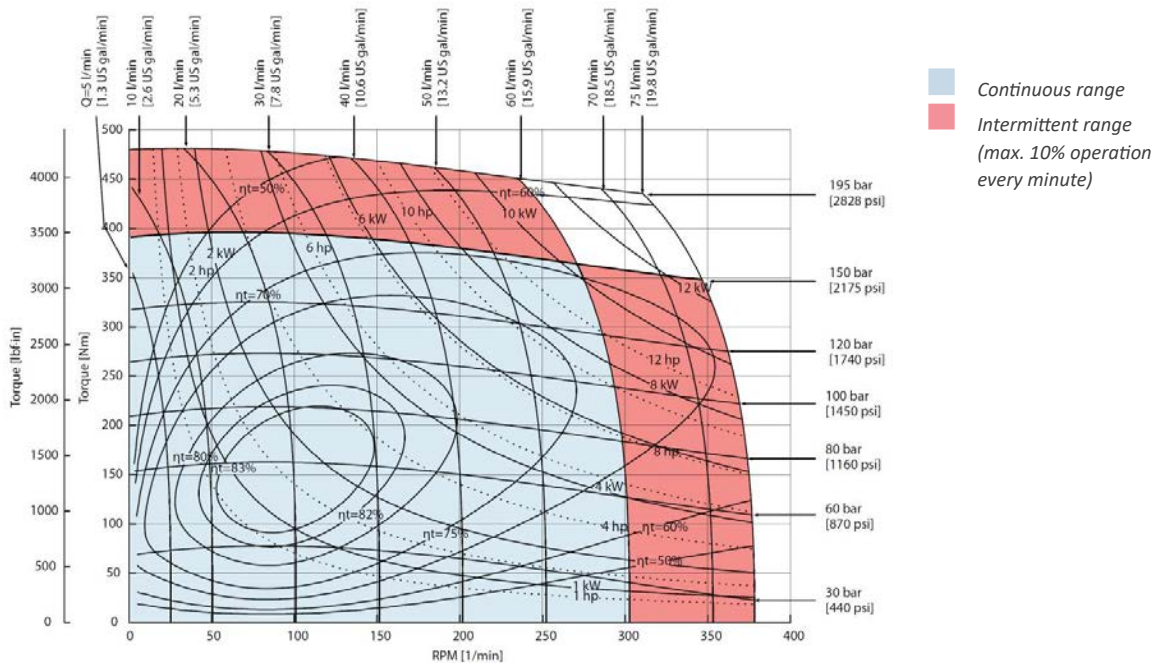


Figure 40 OMR X 200 function diagram

WHITE can accept no responsibility for possible errors in catalogues, brochures, and other printed material. WHITE reserves the right to alter its products without notice. This also applies to products already on order provided that such alterations can be made without subsequent changes being necessary in specifications already agreed.

All trademarks in this material are the property of the respective companies. WHITE and the WHITE logotype are trademarks of WHITE Drive Motors & Steering LLC and WHITE Drive Motors and Steering Sp. z o.o..

All rights reserved.

|May 2025|, Rev. 02

Archivierung: 11/2025

OMR X 250

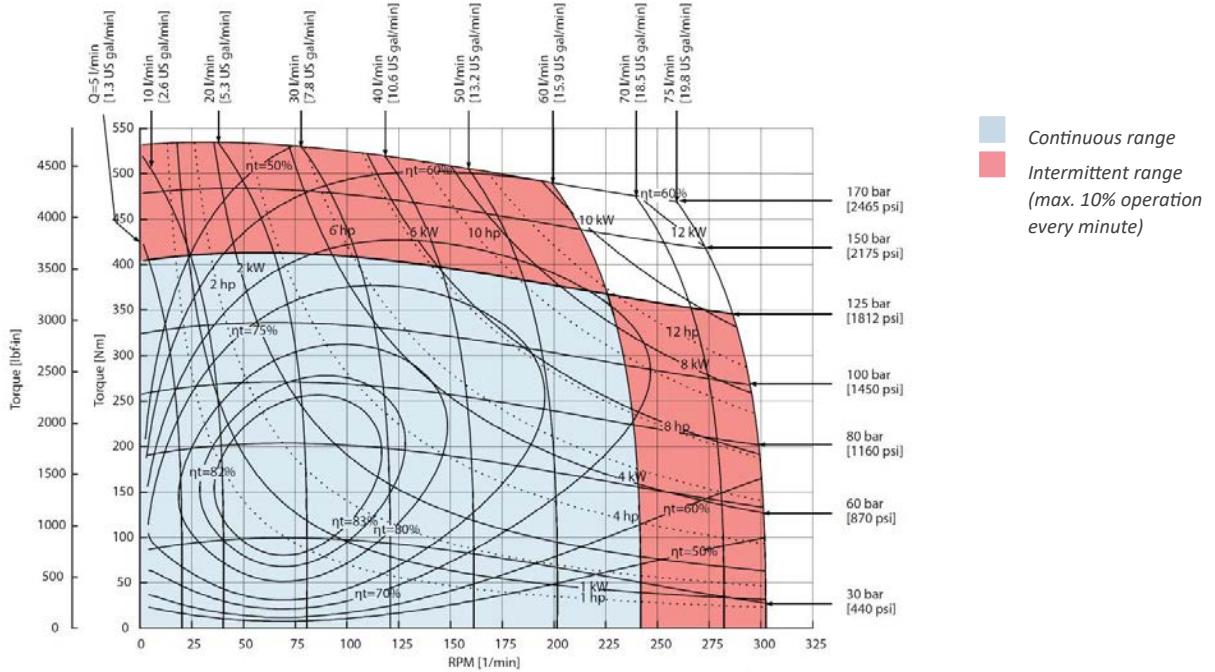


Figure 41 OMR X 250 function diagram

OMR X 315

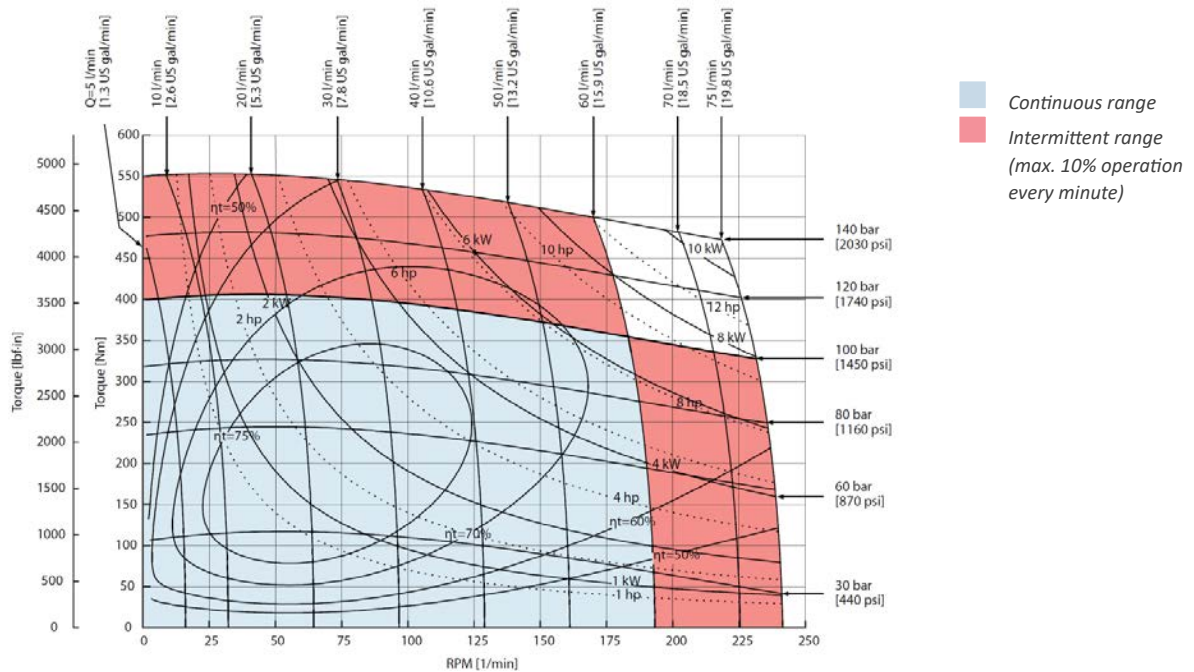


Figure 42 OMR X 315 function diagram

WHITE can accept no responsibility for possible errors in catalogues, brochures, and other printed material. WHITE reserves the right to alter its products without notice. This also applies to products already on order provided that such alterations can be made without subsequent changes being necessary in specifications already agreed.

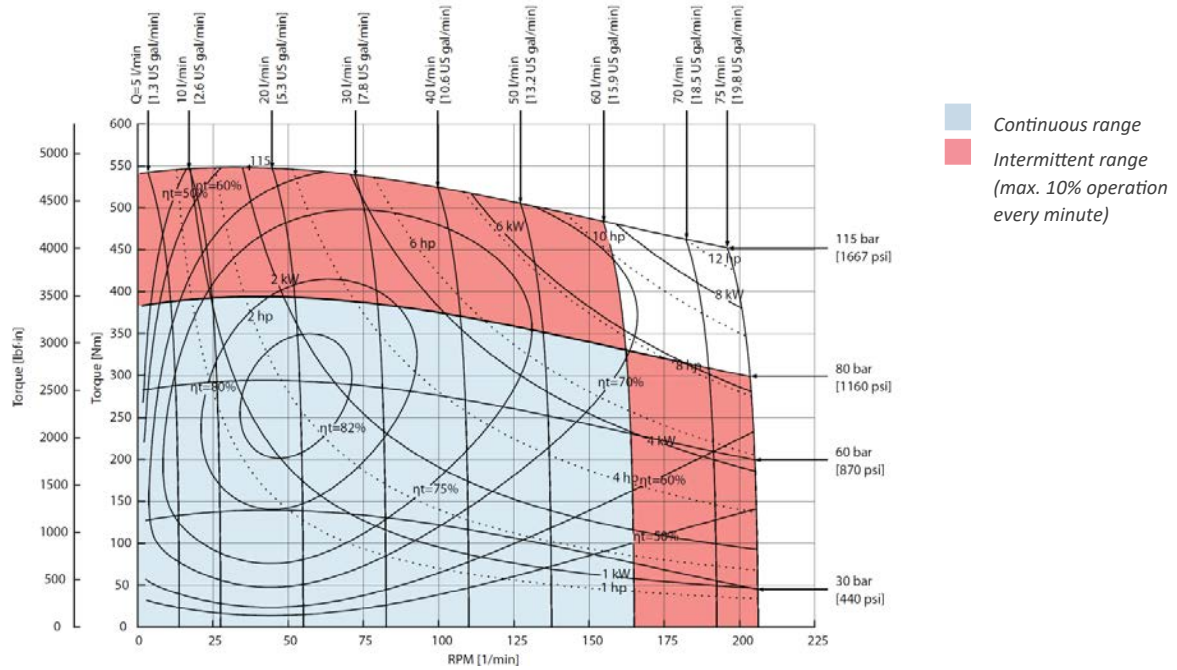
All trademarks in this material are the property of the respective companies. WHITE and the WHITE logotype are trademarks of WHITE Drive Motors & Steering LLC and WHITE Drive Motors and Steering Sp. z o.o..

All rights reserved.

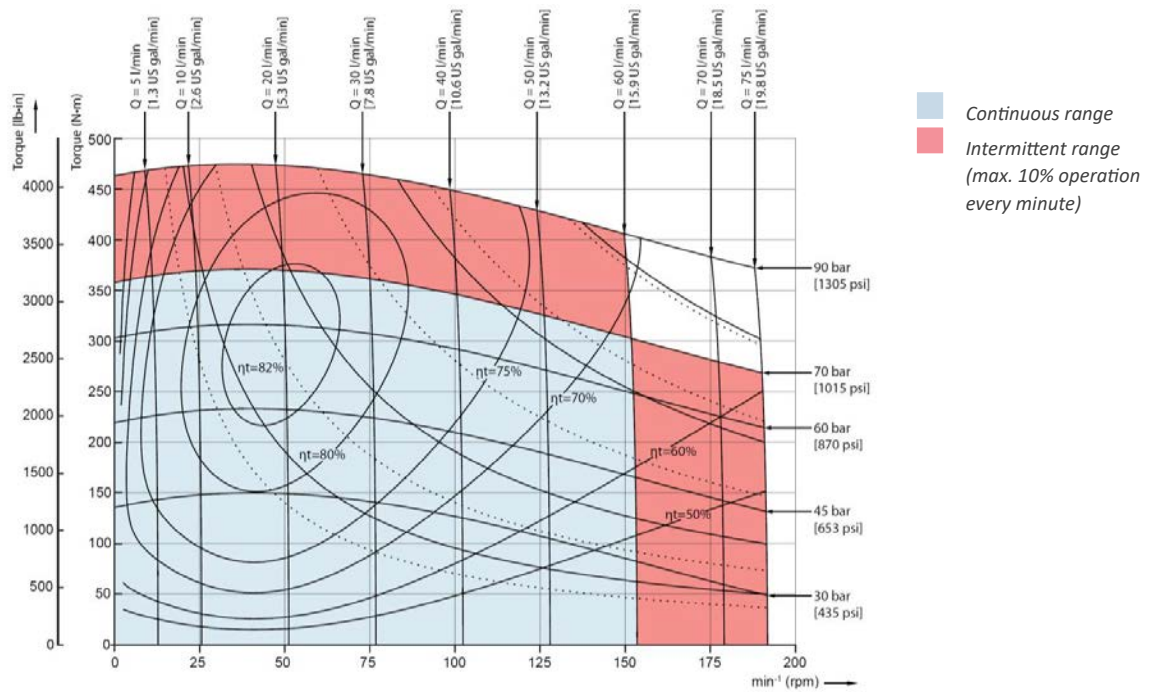
[May 2025], Rev. 02

Archivierung: 11/2025

OMR X 375



OMR X 400



WHITE can accept no responsibility for possible errors in catalogues, brochures, and other printed material. WHITE reserves the right to alter its products without notice. This also applies to products already on order provided that such alterations can be made without subsequent changes being necessary in specifications already agreed.

All trademarks in this material are the property of the respective companies. WHITE and the WHITE logotype are trademarks of WHITE Drive Motors & Steering LLC and WHITE Drive Motors and Steering Sp. z o.o..

All rights reserved.

| May 2025 |, Rev. 02

Archivierung: 11/2025

Chapter 7

OMR X dimensions

Topics:

- EU version side port offset with 2-hole oval mounting flange (A2)
- EU version end port version with 2-hole oval mounting flange (A2)
- US version side port offset with 2-hole oval mounting flange (A2)
- US version side port aligned with 2-hole oval mounting flange (A2)
- US version side port aligned with square mounting flange (C-flange)

WHITE can accept no responsibility for possible errors in catalogues, brochures, and other printed material. WHITE reserves the right to alter its products without notice. This also applies to products already on order provided that such alterations can be made without subsequent changes being necessary in specifications already agreed.

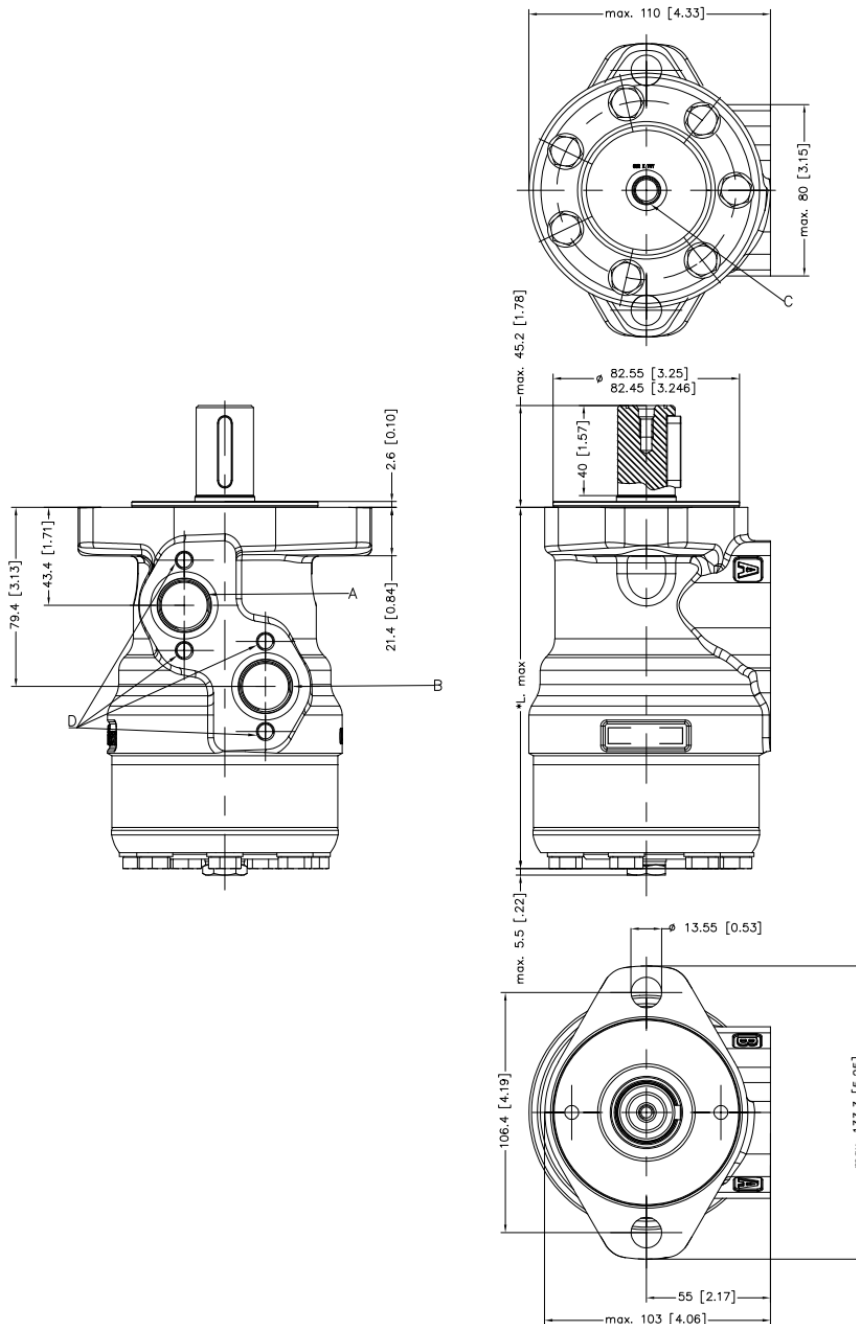
All trademarks in this material are the property of the respective companies. WHITE and the WHITE logotype are trademarks of WHITE Drive Motors & Steering LLC and WHITE Drive Motors and Steering Sp. z o.o..

All rights reserved.

| May 2025 |, Rev. 02

Archivierung: 11/2025

US version side port offset with 2-hole oval mounting flange (A2)



Port connections:

- A, B** Main ports: 7/8 - 14 UNF;
min. 16.7 mm [0.66 in] deep
- C** Drain port: 7/16 - 20 UNF;
12 mm [0.47 in] deep
- D** Thread: M8; 13 mm
[0.51 in] deep

Figure 47 OMR X side port offset (A2- flange) US version

Dimension mm [in]	OMR X										
	36	50	65	80	100	125	160	200	250	315	375
L_{max.}	143.2 [5.64]	143.2 [5.64]	152.6 [6.0]	148.2 [5.84]	148.2 [5.84]	151.6 [5.97]	156 [6.15]	162 [6.38]	169 [6.66]	177.7 [7.00]	185.2 [7.30]

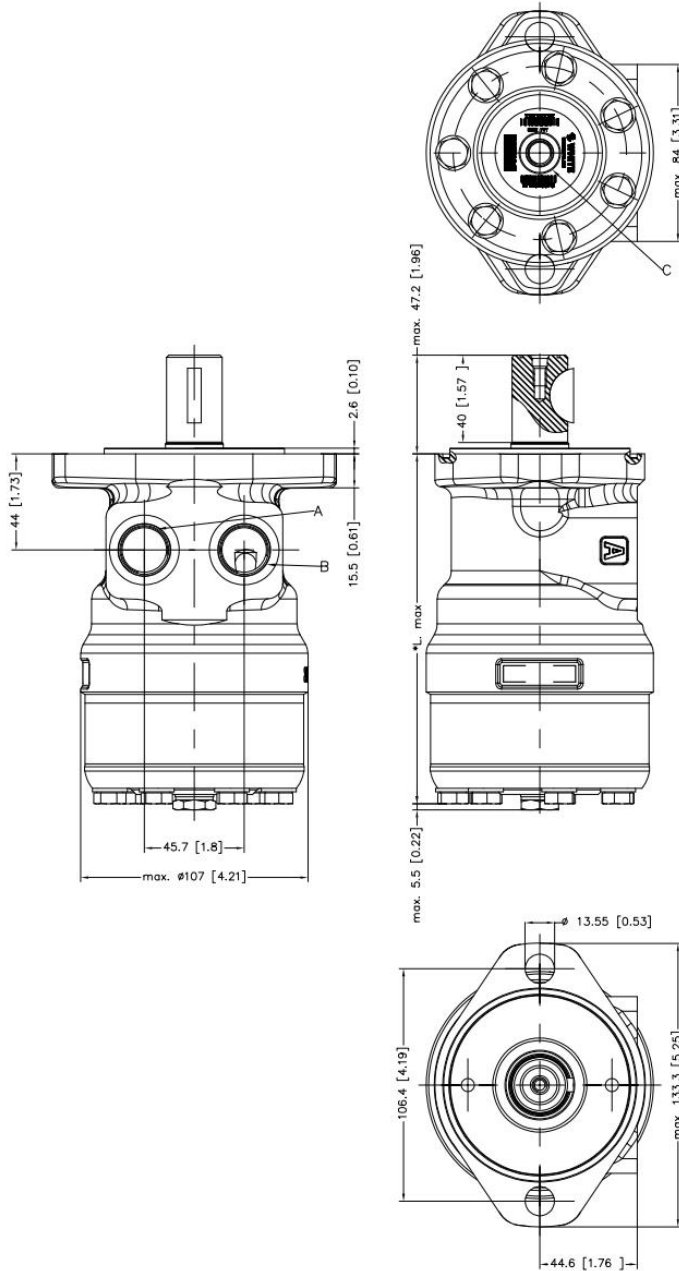
Table 16 OMR X side port offset (A2- flange) US version dimensions

WHITE can accept no responsibility for possible errors in catalogues, brochures, and other printed material. WHITE reserves the right to alter its products without notice. This also applies to products already on order provided that such alterations can be made without subsequent changes being necessary in specifications already agreed.

All trademarks in this material are the property of the respective companies. WHITE and the WHITE logotype are trademarks of WHITE Drive Motors & Steering LLC and WHITE Drive Motors and Steering Sp. z o.o..

All rights reserved.

US version side port aligned with 2-hole oval mounting flange (A2)



Port connections:

- A, B** Main ports: 7/8 - 14 UNF;
min. 16.7 mm [0.66 in] deep
- C** Drain port: 7/16 - 20 UNF;
12 mm [0.47 in] deep
- D** Thread: M8; 13 mm
[0.51 in] deep

Figure 48 OMR X side port (A2-flange) US version

Dimension mm [in]	OMR X										
	36	50	80	100	125	160	200	250	315	375	400
L_{max.}	143.2 [5.64]	143.2 [5.64]	148.2 [5.84]	148.2 [5.84]	151.6 [5.97]	156 [6.15]	162 [6.38]	169 [6.66]	177.7 [7.00]	185.2 [7.30]	189 [7.45]

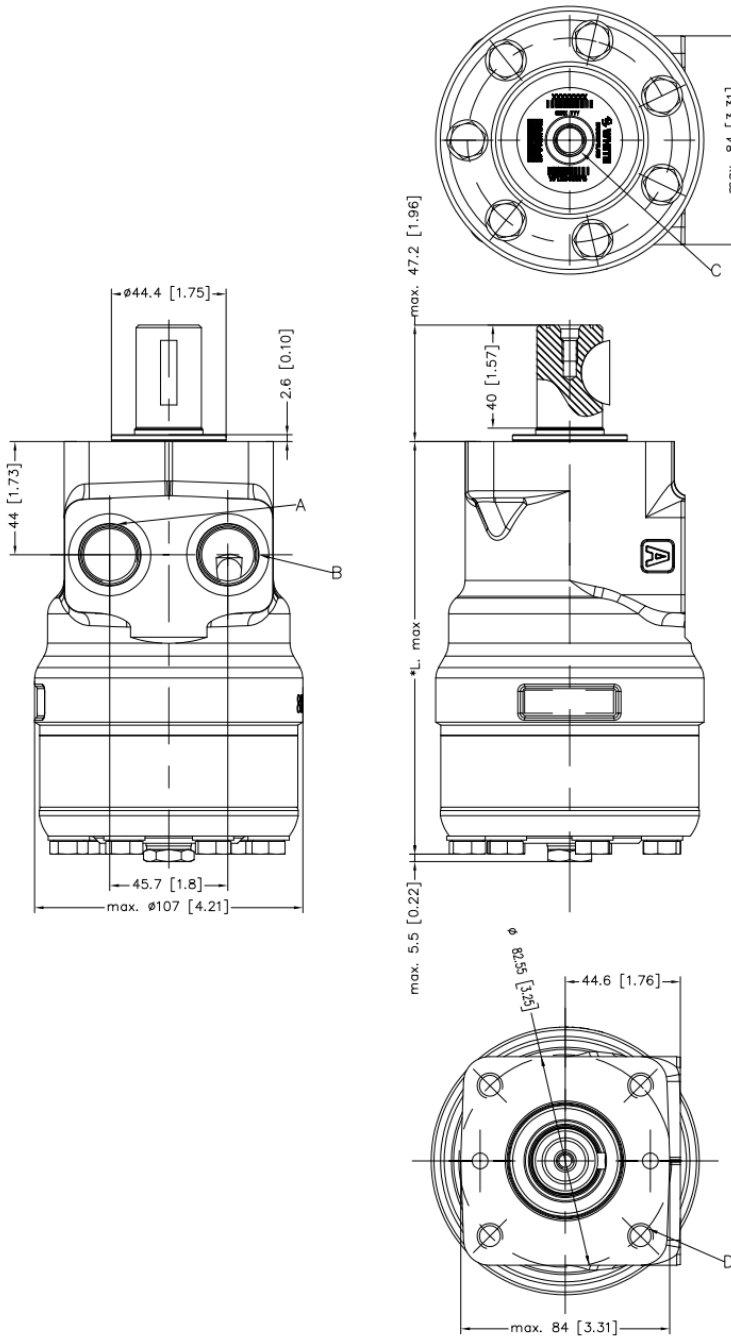
Table 17 OMR X side port (A2-flange) US version dimensions

WHITE can accept no responsibility for possible errors in catalogues, brochures, and other printed material. WHITE reserves the right to alter its products without notice. This also applies to products already on order provided that such alterations can be made without subsequent changes being necessary in specifications already agreed.

All trademarks in this material are the property of the respective companies. WHITE and the WHITE logotype are trademarks of WHITE Drive Motors & Steering LLC and WHITE Drive Motors and Steering Sp. z o.o..

All rights reserved.

US version side port aligned with square mounting flange (C-flange)



Port connections:

- A, B** Main ports: 7/8 - 14 UNF;
min. 16.7 mm [0.66 in] deep
- C** Drain port: 7/16 - 20 UNF;
12 mm [0.47 in] deep
- D** Thread: 3/8-16 UNC; 15 mm
[0.59 in] deep

Figure 49 OMR X side port (C-flange) US version

Dimension mm [in]	OMR X							
	80	100	125	160	200	250	315	375
L_{max}	148.2 [5.84]	148.2 [5.84]	151.6 [5.97]	156 [6.15]	162 [6.38]	169 [6.66]	177.7 [7.0]	189 [7.45]

Table 18 OMR X side port (A2-flange) US version dimensions

WHITE can accept no responsibility for possible errors in catalogues, brochures, and other printed material. WHITE reserves the right to alter its products without notice. This also applies to products already on order provided that such alterations can be made without subsequent changes being necessary in specifications already agreed.

All trademarks in this material are the property of the respective companies. WHITE and the WHITE logotype are trademarks of WHITE Drive Motors & Steering LLC and WHITE Drive Motors and Steering Sp. z o.o..

All rights reserved.

Chapter 8

OMP X shaft and port thread version

Topics:

- OMP X and OMR X shaft versions
- OMP X port thread versions
- OMP X manifold mount
- Seal guard

WHITE can accept no responsibility for possible errors in catalogues, brochures, and other printed material. WHITE reserves the right to alter its products without notice. This also applies to products already on order provided that such alterations can be made without subsequent changes being necessary in specifications already agreed.

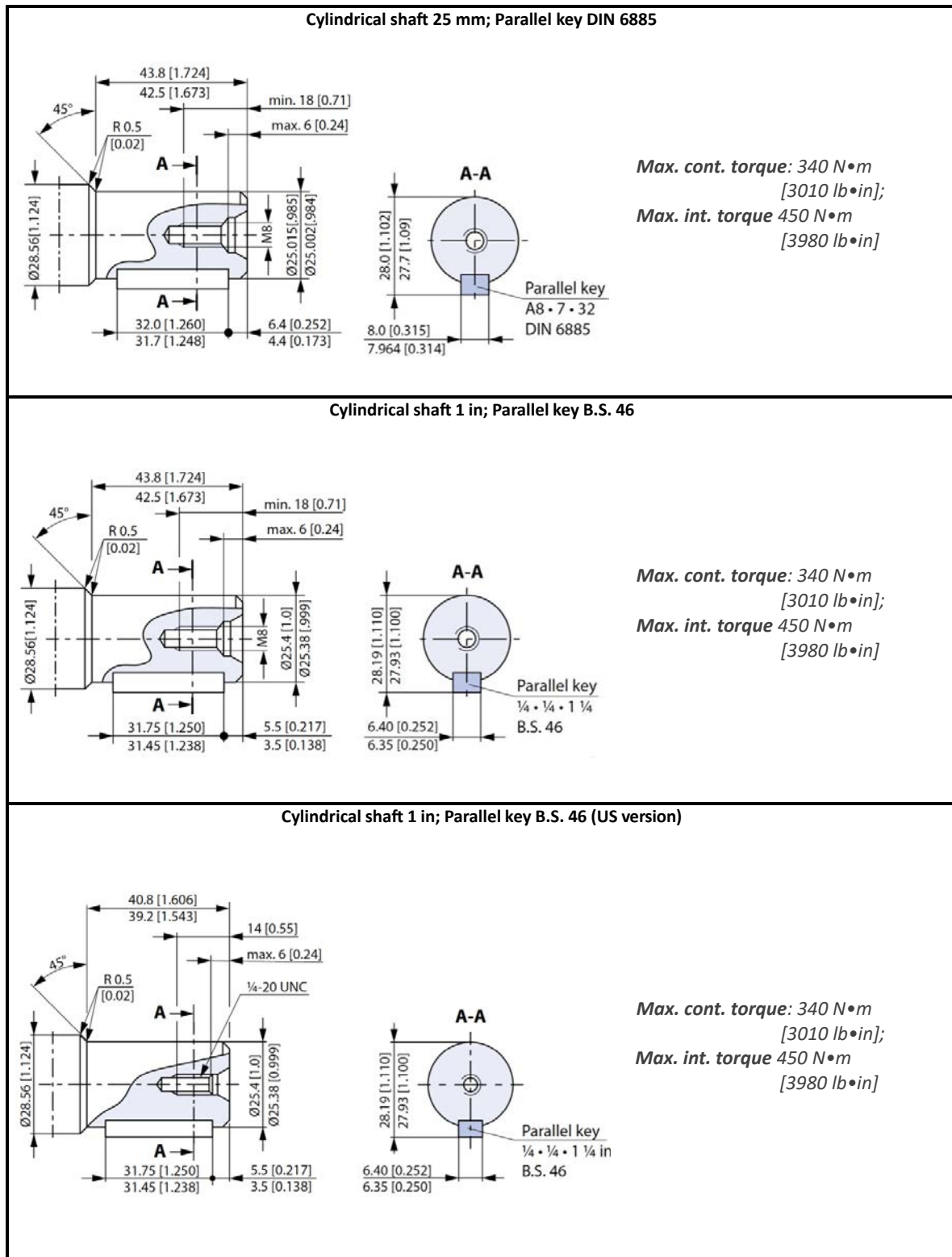
All trademarks in this material are the property of the respective companies. WHITE and the WHITE logotype are trademarks of WHITE Drive Motors & Steering LLC and WHITE Drive Motors and Steering Sp. z o.o..

All rights reserved.

[Feb. 2025], Rev. 02

Archivierung: 11/2025

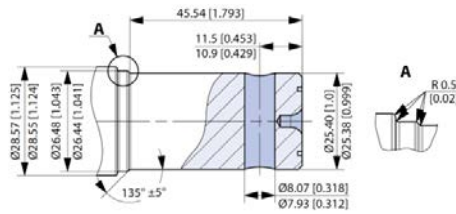
OMP X and OMR X shaft versions



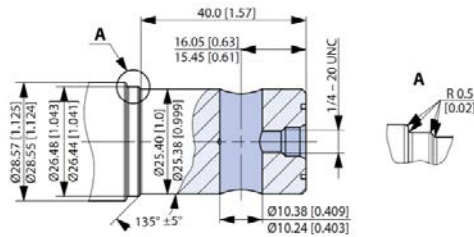
WHITE can accept no responsibility for possible errors in catalogues, brochures, and other printed material. WHITE reserves the right to alter its products without notice. This also applies to products already on order provided that such alterations can be made without subsequent changes being necessary in specifications already agreed.

All trademarks in this material are the property of the respective companies. WHITE and the WHITE logotype are trademarks of WHITE Drive Motors & Steering LLC and WHITE Drive Motors and Steering Sp. z o.o..

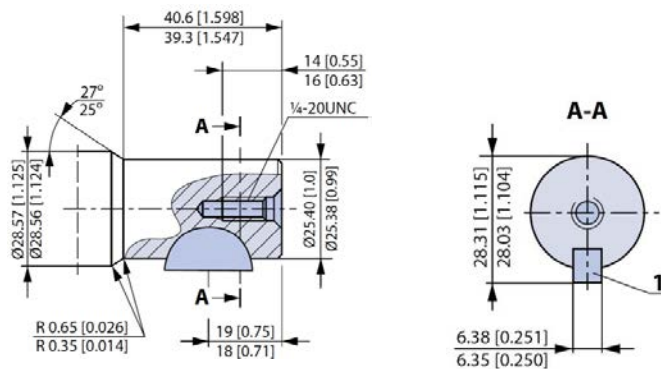
All rights reserved.

Cylindrical shaft 1 in; Cross hole 8 mm


Max. torque: 200 N•m
[1770 lb•in]

Cylindrical shaft 1 in; Cross hole 10.3 mm


Max. torque: 200 N•m
[1770 lb•in]

Cylindrical shaft 1 in (US version); SAE J502


1: Woodruff key 1/4 x 1 in SAE J502

WHITE can accept no responsibility for possible errors in catalogues, brochures, and other printed material. WHITE reserves the right to alter its products without notice. This also applies to products already on order provided that such alterations can be made without subsequent changes being necessary in specifications already agreed.

All trademarks in this material are the property of the respective companies. WHITE and the WHITE logotype are trademarks of WHITE Drive Motors & Steering LLC and WHITE Drive Motors and Steering Sp. z o.o..

All rights reserved.

[Feb. 2025], Rev. 02

Archivierung: 11/2025

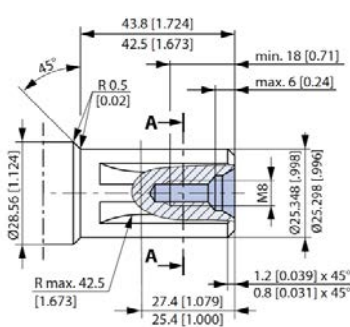
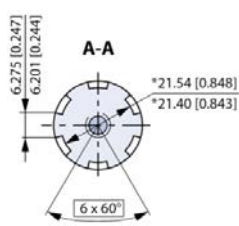
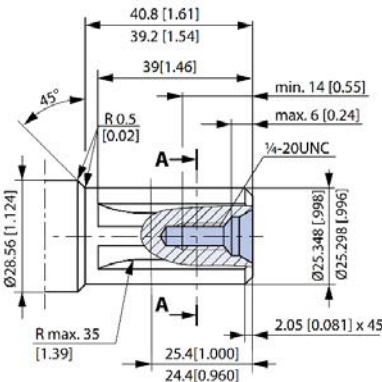
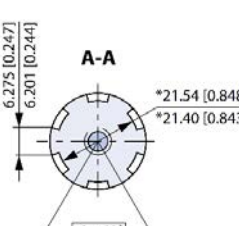
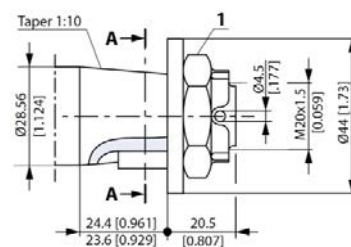
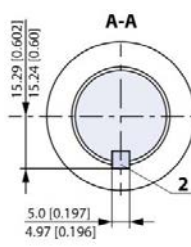
Splined shaft B.S. 2059 (SAE 6B)	
	<p style="text-align: center;">A-A</p> 
<p style="text-align: right;"><i>Straight-sided, bottom fitting, dep. Fit 2, Nom. size 1 in; * Deviates from B.S. 2059 (SAE 6B)</i></p> <p style="text-align: right;">Max. cont. torque: 400 N•m [3540 lb•in]</p>	
Splined shaft B.S. 2059 (SAE 6B); US version	
	<p style="text-align: center;">A-A</p> 
<p style="text-align: right;"><i>Straight-sided, bottom fitting, dep. Fit 2, Nom. size 1 in; * Deviates from B.S. 2059 (SAE 6B)</i></p> <p style="text-align: right;">Max. cont. torque: 400 N•m [3540 lb•in]</p>	
Tapered shaft (taper 1:10); Parallel key DIN 6885	
	<p style="text-align: center;">A-A</p> 
<p style="text-align: right;">1. DIN 937 NV 30; Tightening torque: 100 ± 10 N•m [885 ± 88.5 lb•in]</p> <p style="text-align: right;">2. Parallel key B5 • 5 • 14; DIN 6885</p> <p style="text-align: right;">Max. cont. torque: 400 N•m [3540 lb•in]</p>	

Table 19 OMP X and OMR X shaft versions

WHITE can accept no responsibility for possible errors in catalogues, brochures, and other printed material. WHITE reserves the right to alter its products without notice. This also applies to products already on order provided that such alterations can be made without subsequent changes being necessary in specifications already agreed.

All trademarks in this material are the property of the respective companies. WHITE and the WHITE logotype are trademarks of WHITE Drive Motors & Steering LLC and WHITE Drive Motors and Steering Sp. z o.o..

All rights reserved.

[Feb. 2025], Rev. 02

Archivierung: 11/2025

OMP X port thread versions

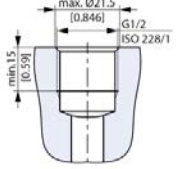
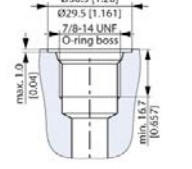
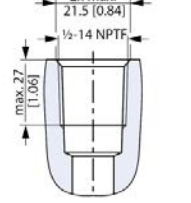
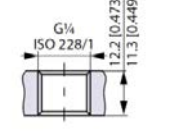
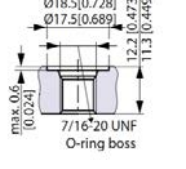
G ISO 228/1 – G1/2	UNF 7/8–14 UNF O-ring boss	NPTF 1/2–14 NPTF	G drain ISO 228/1 – G1/4	UNF drain 7/16–20 UNF O-ring boss
 <p>Figure 50 OMP port thread version: ISO 228/1 – G1/2</p>	 <p>Figure 51 OMP port thread version: 7/8-14 UNF O-ring boss</p>	 <p>Figure 52 OMP port thread version: 1/2–14 NPTF</p>	 <p>Figure 53 OMP port thread version: ISO 228/1 – G1/4</p>	 <p>Figure 54 OMP port thread version: 7/16-20 UNF O-ring boss</p>

Table 20 OMP main ports overview

WHITE can accept no responsibility for possible errors in catalogues, brochures, and other printed material. WHITE reserves the right to alter its products without notice. This also applies to products already on order provided that such alterations can be made without subsequent changes being necessary in specifications already agreed.

All trademarks in this material are the property of the respective companies. WHITE and the WHITE logotype are trademarks of WHITE Drive Motors & Steering LLC and WHITE Drive Motors and Steering Sp. z o.o..

All rights reserved.

[Feb. 2025], Rev. 02

Archivierung: 11/2025

OMP X manifold mount

For OMP X manifold mount versions please see the dimension drawings for given OMP X motors listed below.

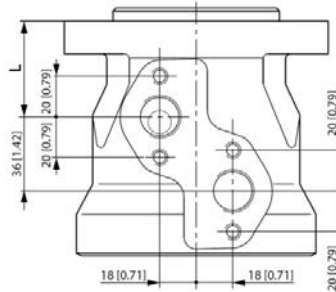


Figure 55 OMP X manifold mount

For L dimension please see the tables in:

- [OMP X dimensions](#)
- [OMR X dimensions](#)

Seal guard

Seal guard is an optional protection of the seal against contamination. Available for all types of shaft.

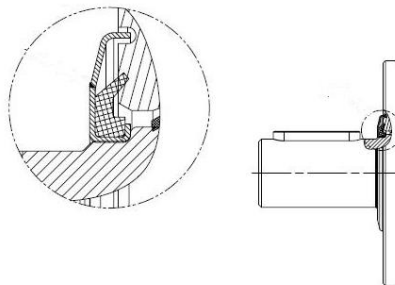


Figure 56 Seal guard

WHITE can accept no responsibility for possible errors in catalogues, brochures, and other printed material. WHITE reserves the right to alter its products without notice. This also applies to products already on order provided that such alterations can be made without subsequent changes being necessary in specifications already agreed.

All trademarks in this material are the property of the respective companies. WHITE and the WHITE logotype are trademarks of WHITE Drive Motors & Steering LLC and WHITE Drive Motors and Steering Sp. z o.o..

All rights reserved.

[Feb. 2025], Rev. 02

Archivierung: 11/2025

Figures

Figure 1 Maximum speed	9
Figure 2 Maximum torque	10
Figure 3 Maximum output	11
Figure 4 OMP X/ OMR X without drain connection	14
Figure 5 OMP X Maximum permissible shaft pressure	14
Figure 6 OMP X Motors Pressure drop	14
Figure 7 OMP X Direction: clockwise	15
Figure 8 OMP X and OMR X shafts	16
Figure 9 OMP X N shafts	16
Figure 10 OMPW X with slide bearings shafts	17
Figure 11 OMPW X with needle bearings shafts	17
Figure 12 OMP X 25 function diagram	22
Figure 13 OMP X 32 function diagram	22
Figure 14 OMP X 36 function diagram	23
Figure 15 OMP X 40 function diagram	23
Figure 16 OMP X 50 function diagram	24
Figure 17 OMP X 80 function diagram	24
Figure 18 OMP X 100 function diagram	25
Figure 19 OMP X 125 function diagram	25
Figure 20 OMP X 160 function diagram	26
Figure 21 OMP X 200 function diagram	26
Figure 22 OMP X 250 function diagram	27
Figure 23 OMP X 315 function diagram	27
Figure 24 OMP X 400 function diagram	28
Figure 25 OMP X side port offset A2-angle EU version	30
Figure 26 OMP X end port A2-angle EU version	31
Figure 27 OMPW X and OMPW X N EU version	32
Figure 28 OMP X side port offset A2-angle (US version)	33
Figure 29 OMP X side port aligned A2-angle (US version)	34
Figure 30 OMP X side port aligned C-angle US version	35
Figure 31 OMR X pressure drop	38
Figure 32 OMR X Direction: clockwise	38
Figure 33 OMR X 36 function diagram	42
Figure 34 OMR X 50 function diagram	42
Figure 35 OMR X 65 function diagram	Error! Bookmark not defined.
Figure 36 OMR X 80 function diagram	43
Figure 37 OMR X 100 function diagram	44
Figure 38 OMR X 125 function diagram	44
Figure 39 OMR X 160 function diagram	45
Figure 40 OMR X 200 function diagram	45
Figure 41 OMR X 250 function diagram	46
Figure 42 OMR X 315 function diagram	46
Figure 43 OMR X 375 function diagram	47
Figure 44 OMR X 400 function diagram	47
Figure 45 OMR X side port (A2-angle) EU version	49
Figure 46 OMR X end port version (A2-angle) EU version	50
Figure 47 OMR X side port offset (A2-angle) US version	51

WHITE can accept no responsibility for possible errors in catalogues, brochures, and other printed material. WHITE reserves the right to alter its products without notice. This also applies to products already on order provided that such alterations can be made without subsequent changes being necessary in specifications already agreed.

All trademarks in this material are the property of the respective companies. WHITE and the WHITE logotype are trademarks of WHITE Drive Motors & Steering LLC and WHITE Drive Motors and Steering Sp. z o.o..

All rights reserved.

Figure 48 OMR X side port (A2- e) US version	52
Figure 49 OMR X side port (C- e) US version	53
Figure 50 OMP port thread version: ISO 228/1 – G1/2	58
Figure 51 OMP port thread version: 7/8-14 UNF O-ring boss	58
Figure 52 OMP port thread version: 1/2–14 NPTF	58
Figure 53 OMP port thread version: ISO 228/1 – G1/4	58
Figure 54 OMP port thread version: 7/16-20 UNF O-ring boss	58
Figure 55 OMP X manifold mount	59

Tables

Table 1 OMP X moto ca n	13
Table 2 Pressure limits	13
Table 3 Max. ow in the drain line at return pressure less 5-10 bar	15
Table 4 OMP X and OMR X Permissible sha d (P _R) in N [lbf]	15
Table 5 OMP X side port o set A2- ersion dimensions	30
Table 6 OMP X end port A2- e EU version dimensions	31
Table 7 OMPW X and OMPW X N EU version dimensions	32
Table 8 OMP X side port o set A2- ge (US version) dimensions	33
Table 9 OMP X side port aligned A2- ge (US version) dimensions	34
Table 10 OMP X side port aligned A2- ange (US version) dimensions	35
Table 11 OMR X moto a n	37
Table 12 OMR X Pressure limits	37
Table 13 OMR X Max. ow in the drain line at return pressure less 5-10 bar	38
Table 14 OMR X side port (A2- e) EU version dimensions	49
Table 15 OMR X end port version (A2- e) EU version dimensions	50
Table 16 OMR X side port o set (A2- nge) US version dimensions	51
Table 17 OMR X side port (A2- e) US version dimensions	52
Table 18 OMR X side port (A2- e) US version dimensions	53
Table 19 OMP X and OMR X sha ersions	57
Table 20 OMP main ports overview	58

WHITE can accept no responsibility for possible errors in catalogues, brochures, and other printed material. WHITE reserves the right to alter its products without notice. This also applies to products already on order provided that such alterations can be made without subsequent changes being necessary in specifications already agreed.

All trademarks in this material are the property of the respective companies. WHITE and the WHITE logotype are trademarks of WHITE Drive Motors & Steering LLC and WHITE Drive Motors and Steering Sp. z o.o..

All rights reserved.

[Feb. 2025], Rev. 02

Archivierung: 11/2025



White Drive Motors & Steering, LLC
110 Bill Bryan Blvd, Hopkinsville, Kentucky, 42240

White Drive Motors and Steering sp. z o.o.
ul. Logistyczna 1, Bielany Wrocławskie, 55-040 Kobierzyce

whitedriveproducts.com