

MOTORS

Technical Information

OML and OMM Orbital Motors

White is a leading global provider of
motor and steering solutions that power
the evolution of mobile and industrial
applications around the world.

Contents

Chapter 1 General Information	5
Speed, torque and output	6
<i>Speed</i>	6
<i>Torque</i>	6
<i>Output</i>	6
Chapter 2 OML	7
Technical data	8
Shaft seal	9
<i>Maximum permissible shaft seal pressure</i>	9
Oil flow	10
<i>Direction of shaft rotation</i>	10
Shaft load	10
<i>Permissible shaft loads for OML</i>	10
Function diagram	10
<i>OML 8 function diagram</i>	10
<i>OML 12.5 function diagram</i>	11
<i>OML 20 function diagram</i>	11
<i>OML 32 function diagram</i>	11
Shaft	12
Port thread version	12
Dimensions	13
<i>OML End port, European version</i>	13
<i>OML End port, US version</i>	14
Chapter 3 OMM	15
Technical data	16
Shaft seal	17
<i>Max. permissible shaft seal pressure</i>	17
<i>Pressure Drop</i>	17
Oil flow	18
<i>Direction of shaft rotation</i>	18
Shaft load	18
<i>Permissible shaft loads for OMM</i>	18
Function diagrams	18
<i>OMM 8 function diagram</i>	18
<i>OMM 12.5 function diagram</i>	19
<i>OMM 20 function diagram</i>	19
<i>OMM 32 function diagram</i>	19
<i>OMM 50 function diagram</i>	20
Shaft	20
Port thread versions	21
Dimensions	22
<i>OMM end port, European version</i>	22
<i>OMM end port, US version</i>	23
<i>OMM side port version, European version</i>	24
<i>OMM side port, US version</i>	25
Chapter 4 Accessories	26

WHITE can accept no responsibility for possible errors in catalogues, brochures, and other printed material. WHITE reserves the right to alter its products without notice. This also applies to products already on order provided that such alterations can be made without subsequent changes being necessary in specifications already agreed.

All trademarks in this material are the property of the respective companies. WHITE and the WHITE logotype are trademarks of WHITE Drive Motors & Steering LLC and WHITE Drive Motors and Steering Sp. z o.o..

All rights reserved.

Archivierung: 11/2025

2 bolt flange kit, code no. 151G0211	27
Chapter 5 Hydraulic systems	28
Installation of the Orbital Motors	29
<i>About the design</i>	29
<i>About the assembly</i>	29
Starting up and running in the hydraulic system	29
Operation	30
Maintenance	30
Figures	31
Tables	31

WHITE can accept no responsibility for possible errors in catalogues, brochures, and other printed material. WHITE reserves the right to alter its products without notice. This also applies to products already on order provided that such alterations can be made without subsequent changes being necessary in specifications already agreed.

All trademarks in this material are the property of the respective companies. WHITE and the WHITE logotype are trademarks of WHITE Drive Motors & Steering LLC and WHITE Drive Motors and Steering Sp. z o.o..

All rights reserved.

Archivierung: 11/2025

Chapter 1

General Information

Topics:

- *Speed*
- *Torque*
- *Output*

WHITE can accept no responsibility for possible errors in catalogues, brochures, and other printed material. WHITE reserves the right to alter its products without notice. This also applies to products already on order provided that such alterations can be made without subsequent changes being necessary in specifications already agreed.

All trademarks in this material are the property of the respective companies. WHITE and the WHITE logotype are trademarks of WHITE Drive Motors & Steering LLC and WHITE Drive Motors and Steering Sp. z o.o..

All rights reserved.

Archivierung: 11/2025

Speed, torque and output

The following bar diagrams, are useful for a quick selection of relevant motor size for the application. The nominal motor size can be determined by using the function diagram for each motor size.

- OML can be found under function diagrams.
- OMM can be found under function diagrams.

The function diagrams are based on actual tests on a representative number of motors from our production. The diagrams apply to a return pressure between 5 and 10 bar [75 and 150 psi] when using mineral based hydraulic oil with a viscosity of 35 mm²/s [165 SUS] and a temperature of 50°C [120°F]. For further explanation concerning how to read and use the function diagrams, please consult the paragraph "Selection of motor size" in the technical information "General".

Speed

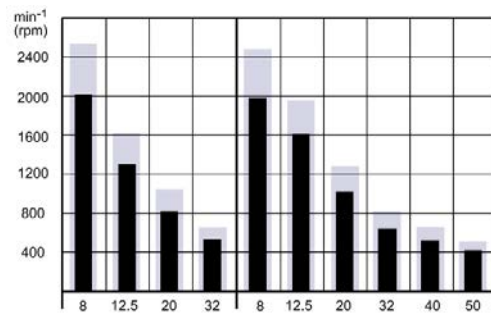


Figure 1 Speed

Torque

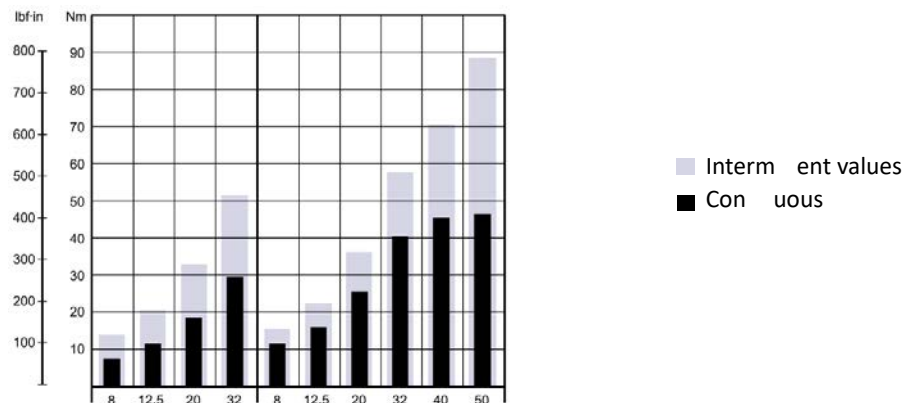


Figure 2 Torque

Output

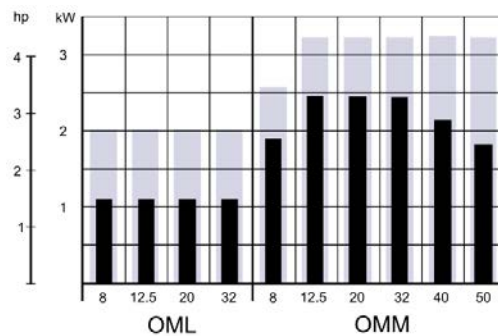


Figure 3 Output

WHITE can accept no responsibility for possible errors in catalogues, brochures, and other printed material. WHITE reserves the right to alter its products without notice. This also applies to products already on order provided that such alterations can be made without subsequent changes being necessary in specifications already agreed.

All trademarks in this material are the property of the respective companies. WHITE and the WHITE logotype are trademarks of WHITE Drive Motors & Steering LLC and WHITE Drive Motors and Steering Sp. z o.o..

All rights reserved.

Archivierung: 11/2025

Chapter 2

OML

Topics:

- *Technical data*
- *Shaft seal*
- *Oil flow*
- *Shaft load*
- *Function diagram*
- *Shaft*
- *Port thread version*
- *Dimensions*

WHITE can accept no responsibility for possible errors in catalogues, brochures, and other printed material. WHITE reserves the right to alter its products without notice. This also applies to products already on order provided that such alterations can be made without subsequent changes being necessary in specifications already agreed.

All trademarks in this material are the property of the respective companies. WHITE and the WHITE logotype are trademarks of WHITE Drive Motors & Steering LLC and WHITE Drive Motors and Steering Sp. z o.o..

All rights reserved.

Archivierung: 11/2025

Technical data

Type		OML	OML	OML	OML	
Motor Size		8	12.5	20	32	
Geometric displacement	cm ³	8.0	12.5	20.0	32.0	
	[in ³]	[0.49]	[0.77]	[1.22]	[1.96]	
Max. speed	cont.	2000	1280	800	500	
	int. ¹⁾	2500	1600	1000	625	
Max. torque	cont.	Nm	7	11	18	29
		[lbf•in]	[60]	[100]	[160]	[260]
	int. ¹⁾	Nm	13	20	32	51
		[lbf•in]	[120]	[180]	[280]	[450]
Max. output	cont.	kW	1.1	1.1	1.1	1.1
		[hp]	[1.5]	[1.5]	[1.5]	[1.5]
	int. ¹⁾	kW	2.0	2.0	2.0	2.0
		[hp]	[2.7]	[2.7]	[2.7]	[2.7]
Max. pressure drop	cont.	bar	70	70	70	70 (55) ³
		[psi]	[1020]	[1020]	[1020]	[1020] [800] ³
	int. ¹⁾	bar	125	125	125 (85) ³	125 (55) ³
		[psi]	[1810]	[1810]	[1810] [800] ³	[1810] [800] ³
	peak ²⁾	bar	140	140	125 (85) ³	140 (55) ³
		[psi]	[2030]	[2030]	[2030] [1230] ³	[2030] [800] ³
Max. oil flow	cont.	l/min	16	16	16	16
		[US gal/min]	[4.2]	[4.2]	[4.2]	[4.2]
	int. ¹⁾	l/min	20	20	20	20
		[US gal/min]	[5.3]	[5.3]	[5.3]	[5.3]
Max. starting pressure with unloaded shaft	bar	4	4	4	6	
	[psi]	[60]	[60]	[60]	[90]	
Min. starting torque	at max. press. drop cont.	Nm	5	9	15	24
		[lbf•in]	[45]	[80]	[135]	[210]
	at max. press. drop int. ¹⁾	Nm	10	16	27	42
		[lbf•in]	[90]	[140]	[240]	[370]
Min. speed ⁴⁾	min ⁻¹ [rpm]	50	50	50	50	

Table 1 Technical data for OML with 16 mm and 5/8 in cylindrical shaft

- 1) Intermittent operation: the permissible values may occur for max. 10% of every minute.
- 2) Peak load: the permissible values may occur for max. 1% of every minute.
- 3) Max. pressure drop in applications with a large moment of inertia and frequent stops or reversings.
- 4) Operation at lower speed may be slightly less smooth.

WHITE can accept no responsibility for possible errors in catalogues, brochures, and other printed material. WHITE reserves the right to alter its products without notice. This also applies to products already on order provided that such alterations can be made without subsequent changes being necessary in specifications already agreed.

All trademarks in this material are the property of the respective companies. WHITE and the WHITE logotype are trademarks of WHITE Drive Motors & Steering LLC and WHITE Drive Motors and Steering Sp. z o.o.

All rights reserved.

Archivierung: 11/2025

Type		Max. inlet pressure	
OML 8 - 32	bar [psi]	cont.	125 [1810]
		int. ¹⁾	140 [2030]
		peak ²⁾	140 [2030]

Table 2 Max. inlet pressure

Shaft seal

Maximum permissible shaft seal pressure

OML has incorporated check valves which ensure that the pressure on the shaft seal never exceeds the pressure in the return line.

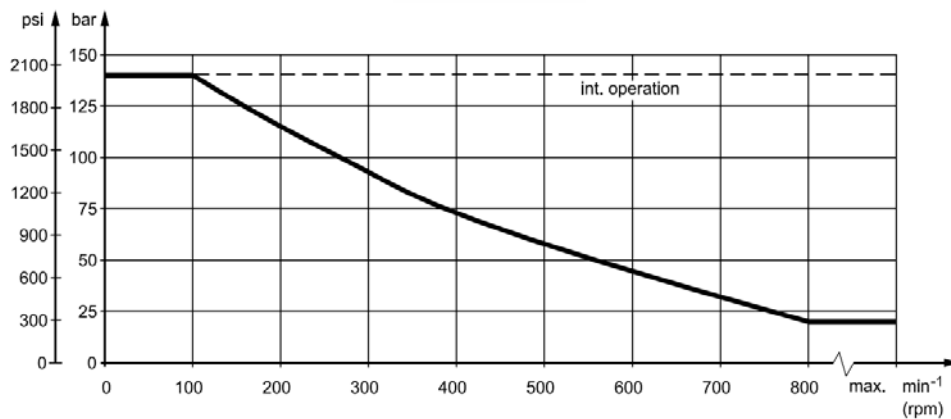
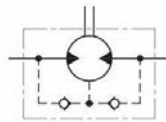


Figure 4 OML max. return pressure

Pressure Drop

The curve applies to an unloaded motor shaft and an oil viscosity of 35 mm²/s [165 SUS]

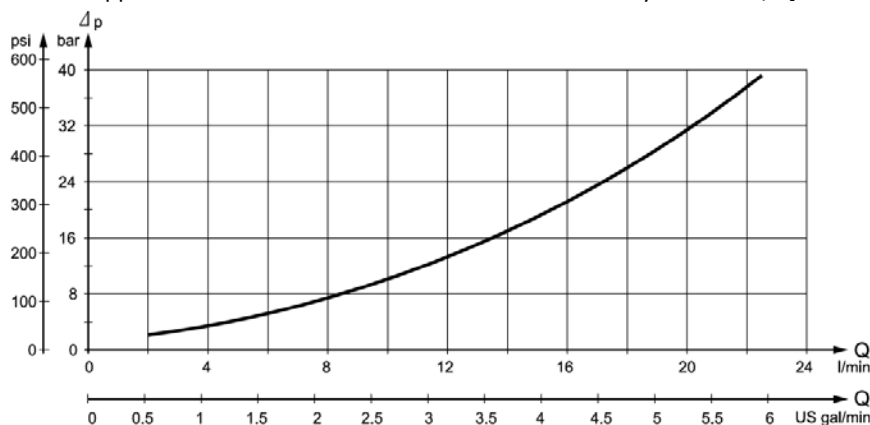


Figure 5 Pressure drop in motor

WHITE can accept no responsibility for possible errors in catalogues, brochures, and other printed material. WHITE reserves the right to alter its products without notice. This also applies to products already on order provided that such alterations can be made without subsequent changes being necessary in specifications already agreed.

All trademarks in this material are the property of the respective companies. WHITE and the WHITE logotype are trademarks of WHITE Drive Motors & Steering LLC and WHITE Drive Motors and Steering Sp. z o.o..

All rights reserved.

Archivierung: 11/2025

Oil flow

Direction of shaft rotation

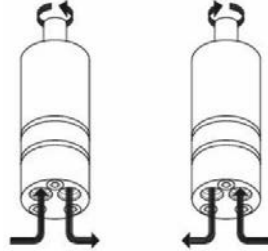


Figure 6 Direction of shaft rotation

Shaft load

Permissible shaft loads for OML

The permissible radial shaft load ($P_{rad.}$) is calculated from the distance (l) between the point of load and the mounting surface:

$$P_{rad.} = \frac{84500}{64.5 + l} \text{ N (l in mm; } l \leq 80)$$

$$P_{rad.} = \frac{748}{254 + l} \text{ lbf (l in inch; } l \leq 3.15)$$

The drawing shows the permissible radial load when $l = 15 \text{ mm [0.59 in]}$.

The calculated shaft load should never exceed the permissible value.

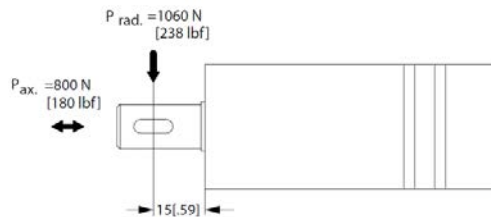


Figure 7 Permissible shaft loads for OML

Function diagram

OML 8 function diagram

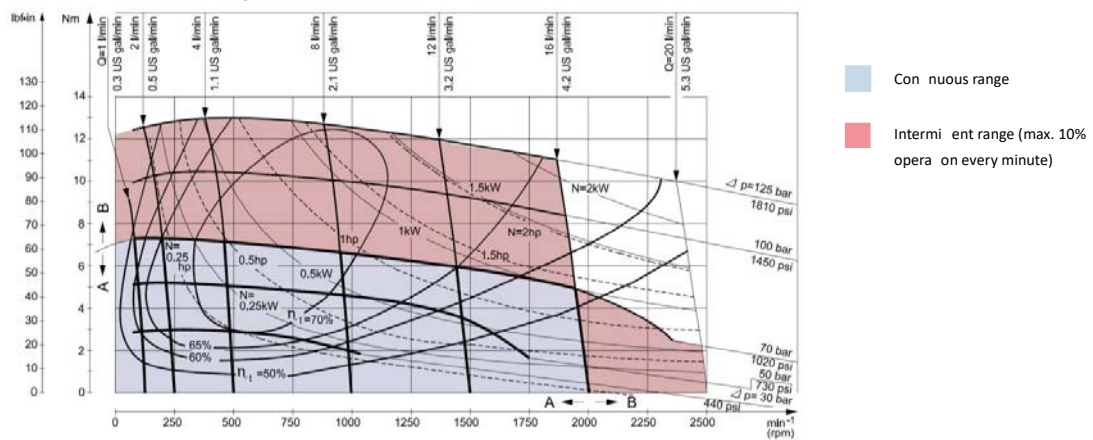


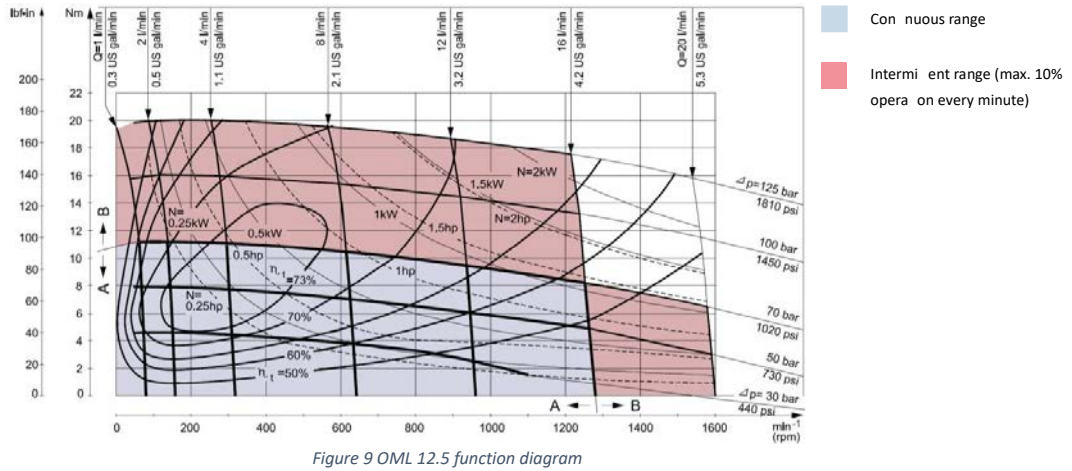
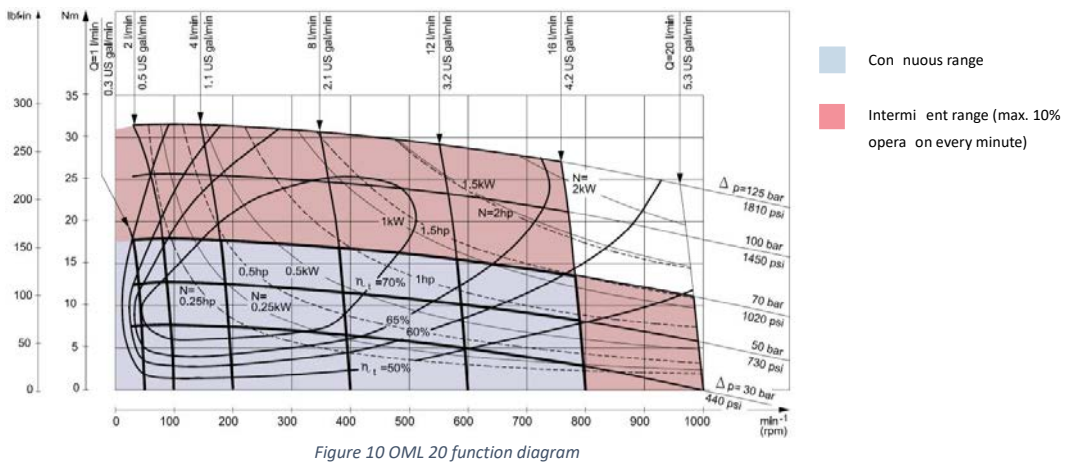
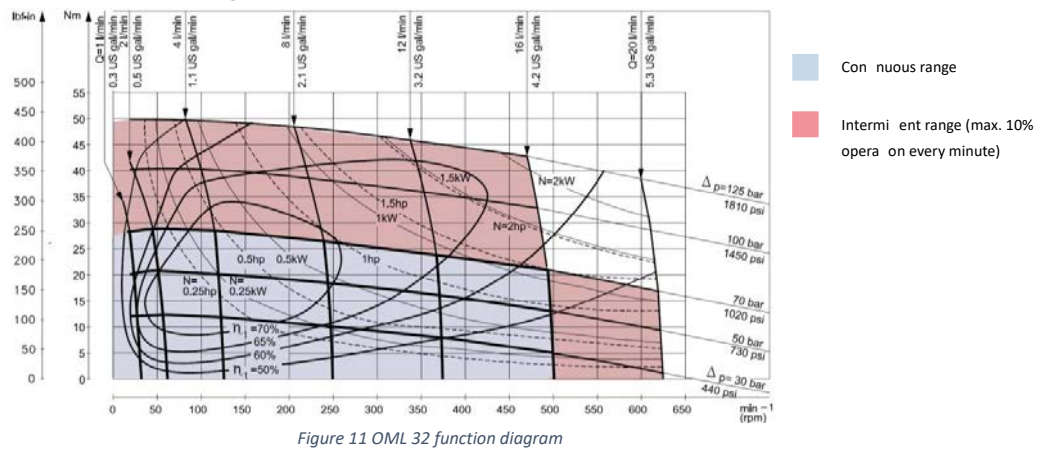
Figure 8 OML 8 function diagram

WHITE can accept no responsibility for possible errors in catalogues, brochures, and other printed material. WHITE reserves the right to alter its products without notice. This also applies to products already an order provided that such alterations can be made without subsequent changes being necessary in specifications already agreed.

All trademarks in this material are the property of the respective companies. WHITE and the WHITE logotype are trademarks of WHITE Drive Motors & Steering LLC and WHITE Drive Motors and Steering Sp. z o.o.

All rights reserved.

Archivierung: 11/2025

OML 12.5 function diagram

OML 20 function diagram

OML 32 function diagram


WHITE can accept no responsibility for possible errors in catalogues, brochures, and other printed material. WHITE reserves the right to alter its products without notice. This also applies to products already on order provided that such alterations can be made without subsequent changes being necessary in specifications already agreed.

All trademarks in this material are the property of the respective companies. WHITE and the WHITE logotype are trademarks of WHITE Drive Motors & Steering LLC and WHITE Drive Motors and Steering Sp. z o.o..

All rights reserved.

Archivierung: 11/2025

Shaft

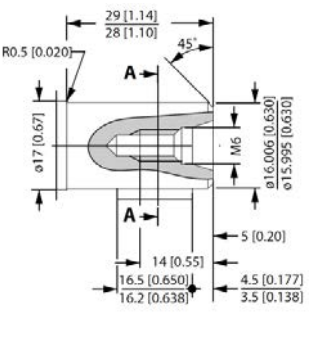
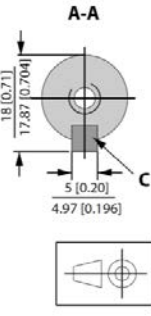
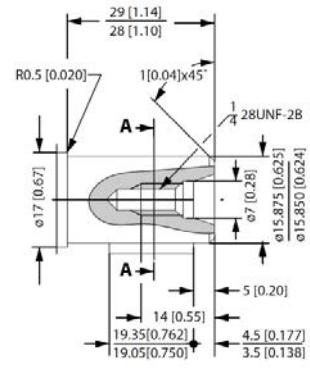
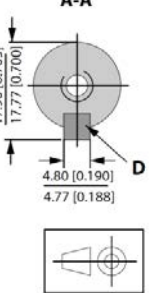
<p>A: Cylindrical 16 mm shaft</p> 		<p>A: Cylindrical shaft 16 mm C: Parallel key A5 × 5 × 16 DIN 6885</p>
<p>Cylindrical shaft 5/8 in.</p> 		<p>US version B: Cylindrical shaft 5/8" D: Parallel key 3/16 × 3/16 × 3/4 in B.S. 46</p>

Table 3 OML Shaft versions

Port thread version

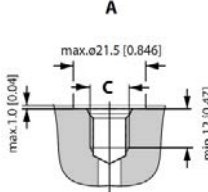
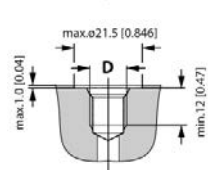
<p>G main ports</p> 	<p>A: G main ports E: ISO 228/1 - G1/4</p>
<p>UNF main ports</p> 	<p>B: UNF main ports F: 7/8 - 14 UNF O-ring boss port</p>

Table 4 OML Port thread version

WHITE can accept no responsibility for possible errors in catalogues, brochures, and other printed material. WHITE reserves the right to alter its products without notice. This also applies to products already on order provided that such alterations can be made without subsequent changes being necessary in specifications already agreed.

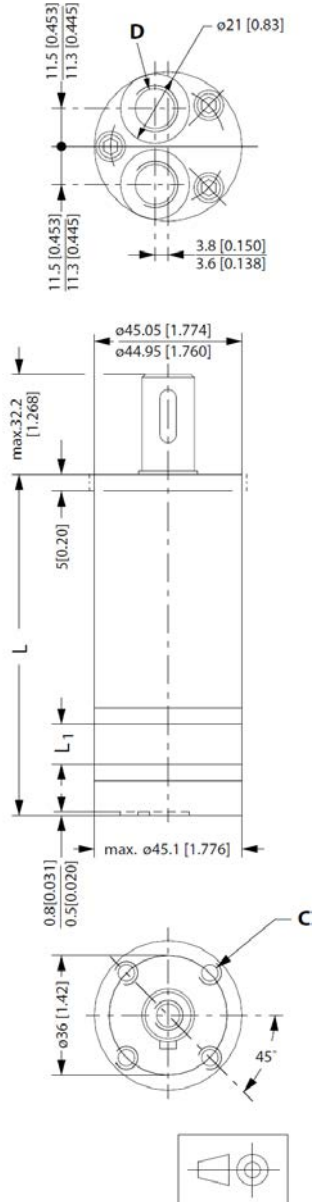
All trademarks in this material are the property of the respective companies. WHITE and the WHITE logotype are trademarks of WHITE Drive Motors & Steering LLC and WHITE Drive Motors and Steering Sp. z o.o.

All rights reserved.

Archivierung: 11/2025

Dimensions

OML End port, European version



C: M5; 15 mm [0.59 in] deep
D: G 1/4; 12 mm [0.47 in]

Figure 12 OML End Port EU version

Weight and dimensions

Type		OML			
		8	12.5	20	32
Length	L _{max} mm [in]	102.5 [4.04]	104.8 [4.13]	108.6 [4.28]	114.7 [4.53]
	L ₁ mm [in]	4.1 [0.16]	6.4 [0.25]	10.2 [0.40]	16.3 [0.64]
Weight	kg [lb]	1.0 [2.2]	1.0 [2.2]	1.1 [2.4]	1.2 [2.6]

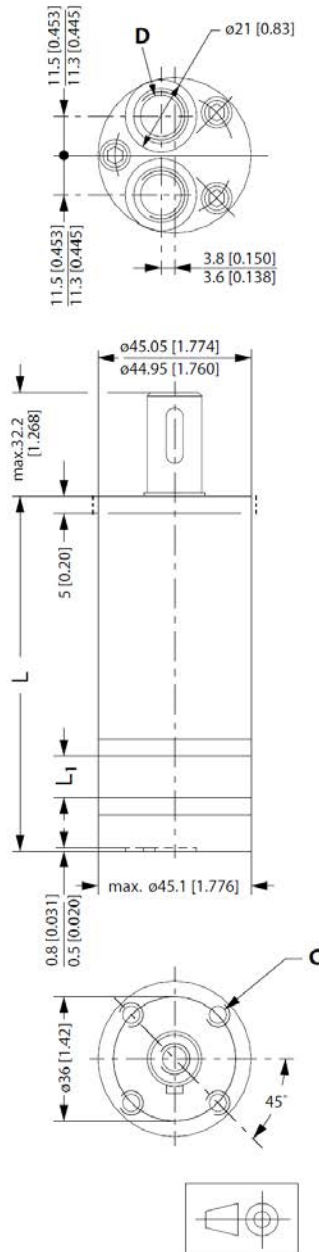
Table 5 OML End port EU version weight and dimensions

WHITE can accept no responsibility for possible errors in catalogues, brochures, and other printed material. WHITE reserves the right to alter its products without notice. This also applies to products already on order provided that such alterations can be made without subsequent changes being necessary in specifications already agreed.

All trademarks in this material are the property of the respective companies. WHITE and the WHITE logotype are trademarks of WHITE Drive Motors & Steering LLC and WHITE Drive Motors and Steering Sp. z o.o..

All rights reserved.

Archivierung: 11/2025

OML End port , US version


C: 10 - 32 UNF; 15 mm [0.59 in] deep
 D: 7/16 - UNF; 12 mm [0.47 in] deep

Figure 13 OML End port US version

Weight and dimensions

Type		OML			
		8	12.5	20	32
Length	L _{max} mm [in]	102.5 [4.04]	104.8 [4.13]	108.6 [4.28]	114.7 [4.53]
	L ₁ mm [in]	4.1 [0.16]	6.4 [0.25]	10.2 [0.40]	16.3 [0.64]
Weight	kg [lb]	1.0	1.0	1.1	1.2
		[2.2]	[2.2]	[2.4]	[2.6]

Table 6 OML End port US version weight and dimensions

WHITE can accept no responsibility for possible errors in catalogues, brochures, and other printed material. WHITE reserves the right to alter its products without notice. This also applies to products already on order provided that such alterations can be made without subsequent changes being necessary in specifications already agreed.

All trademarks in this material are the property of the respective companies. WHITE and the WHITE logotype are trademarks of WHITE Drive Motors & Steering LLC and WHITE Drive Motors and Steering Sp. z o.o..

All rights reserved.

Archivierung: 11/2025

Chapter 3

OMM

Topics:

- *Technical data*
- *Shaft seal*
- *Oil flow*
- *Shaft load*
- *Function diagrams*
- *Shaft*
- *Port thread versions*
- *Dimensions*

WHITE can accept no responsibility for possible errors in catalogues, brochures, and other printed material. WHITE reserves the right to alter its products without notice. This also applies to products already on order provided that such alterations can be made without subsequent changes being necessary in specifications already agreed.

All trademarks in this material are the property of the respective companies. WHITE and the WHITE logotype are trademarks of WHITE Drive Motors & Steering LLC and WHITE Drive Motors and Steering Sp. z o.o..

All rights reserved.

Archivierung: 11/2025

Technical data

Type			OMM					
Motor Size			8	12.5	20	32	40	50
Geometric displacement	cm ³		8.2	12.5	19.9	31.6	39.8	70
	[in ³]		[0.50]	[0.77]	[1.22]	[1.93]	[2.43]	[4.27]
Max. speed	cont.	min ⁻¹	1950	1550	1000	630	500	400
	int. ¹⁾		2450	1940	1250	800	630	500
Max. torque	cont.	Nm	11	16	25	40	45	46
		[lbf•in]	[95]	[140]	[220]	[350]	[400]	[410]
	int. ¹⁾	Nm	15	23	35	57	70	88
		[lbf•in]	[135]	[200]	[310]	[500]	[620]	[780]
Max. output	cont.	kW	1.8	2.4	2.4	2.4	2.2	1.8
		[hp]	[2.4]	[3.2]	[3.2]	[3.2]	[3.0]	[2.4]
	int. ¹⁾	kW	2.6	3.2	3.2	3.2	3.2	3.2
		[hp]	[3.5]	[4.3]	[4.3]	[4.3]	[4.3]	[4.3]
Max. pressure drop	cont.	bar	100	100	100	100	90	70
		[psi]	[1450]	[1450]	[1450]	[1450]	[1310]	[1020]
	int. ¹⁾	bar	140	140	140	140	140	140
		[psi]	[2030]	[2030]	[2030]	[2030]	[2030]	[2030]
	peak ²⁾	bar	200	200	200	160	160	160
		[psi]	[2900]	[2900]	[2900]	[2320]	[2320]	[2320]
Max. oil flow	cont.	l/min	16	20	20	20	20	20
		[US gal/min]	[4.2]	[5.3]	[5.3]	[5.3]	[5.3]	[5.3]
	int. ¹⁾	l/min	20	25	25	25	25	25
		[US gal/min]	[5.3]	[6.6]	[6.6]	[6.6]	[6.6]	[6.6]
Max. starting pressure with unloaded shaft	bar		4	4	4	4	4	4
	[psi]		[60]	[60]	[60]	[60]	[60]	[60]
Min. starting torque	at max. press. drop cont.	Nm	7	12	21	34	38	41
		[lbf•in]	[60]	[105]	[185]	[300]	[335]	[365]
	at max. press. drop int. ¹⁾	Nm	10	17	29	48	62	79
		[lbf•in]	[90]	[150]	[255]	[425]	[550]	[700]
Min. speed ⁴⁾	min ⁻¹ [rpm]		50	40	30	30	30	30

Table 7 OMM Technical data

- 1) Intermittent operation: the permissible values may occur for max. 10% of every minute.
- 2) Peak load: the permissible values may occur for max. 1% of every minute.
- 3) Operation at lower speeds may be slightly less smooth.

WHITE can accept no responsibility for possible errors in catalogues, brochures, and other printed material. WHITE reserves the right to alter its products without notice. This also applies to products already on order provided that such alterations can be made without subsequent changes being necessary in specifications already agreed.

All trademarks in this material are the property of the respective companies. WHITE and the WHITE logotype are trademarks of WHITE Drive Motors & Steering LLC and WHITE Drive Motors and Steering Sp. z o.o..

All rights reserved.

Archivierung: 11/2025

Type		Max. inlet pressure	
OMM 8 - 50	bar [psi]	cont.	140 [2030]
		int. ¹⁾	175 [2538]
		peak ²⁾	225 [3260]

Table 8 Max. inlet pressure

Shaft seal

Max. permissible shaft seal pressure

OMM with check valves and without use of drain connection:

- The pressure on the shaft seal never exceeds the pressure in the return line.

OMM with check valves and drain connection:

- The shaft seal pressure equals the pressure on the drain line.

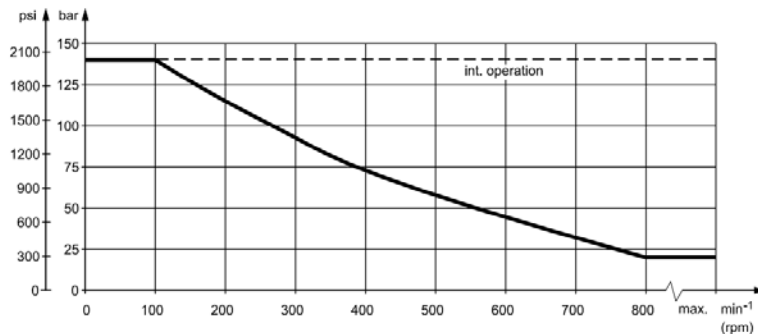
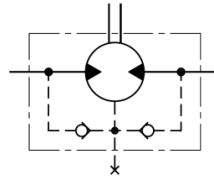


Figure 14 Max. return pressure without drain line or max. pressure in drain line

Pressure Drop

The curve applies to an unloaded motor shaft and an oil viscosity of 35 mm²/s [165 SUS]

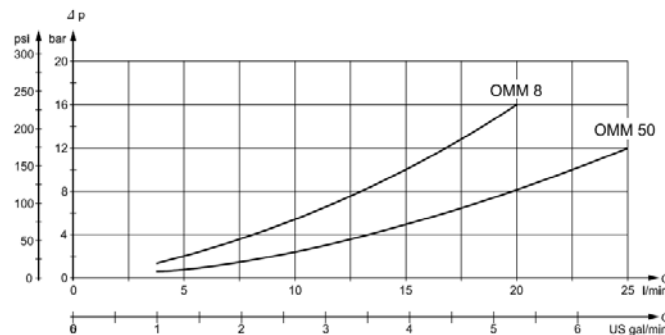


Figure 15 Pressure drop in OMM motor

WHITE can accept no responsibility for possible errors in catalogues, brochures, and other printed material. WHITE reserves the right to alter its products without notice. This also applies to products already on order provided that such alterations can be made without subsequent changes being necessary in specifications already agreed.

All trademarks in this material are the property of the respective companies. WHITE and the WHITE logotype are trademarks of WHITE Drive Motors & Steering LLC and WHITE Drive Motors and Steering Sp. z o.o..

All rights reserved.

Archivierung: 11/2025

Oil flow

Direction of shaft rotation

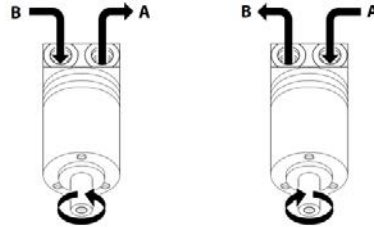


Figure 16 Direction of shaft rotation

Shaft load

Permissible shaft loads for OMM

The permissible radial shaft load ($P_{rad.}$) is calculated from the distance (l) between the point of load and the mounting surface.

$$P_{rad} = \frac{130.400}{61.5 + l} \text{ N } (l \text{ in mm; } l \leq 80\text{mm})$$

$$P_{rad} = \frac{1.155}{2.42 + l} \text{ lbf } (l \text{ in inch; } l \leq 3.15 \text{ in})$$

The drawing shows permissible radial load when $l = 20 \text{ mm}$ [0.79 in].

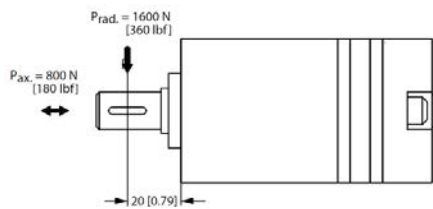


Figure 17 OMM Permissible shaft loads

The calculated shaft load should never exceed the permissible value.

Function diagrams

OMM 8 function diagram

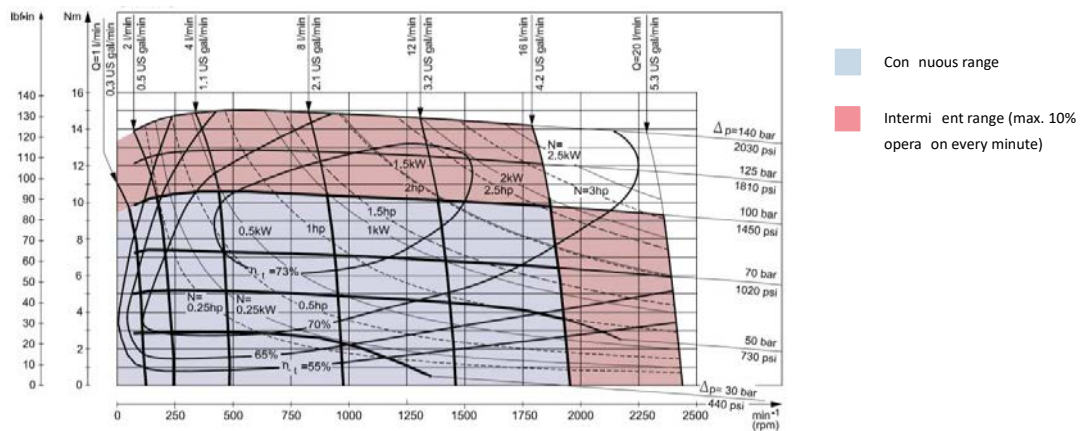


Figure 18 OMM 8 function diagram

WHITE can accept no responsibility for possible errors in catalogues, brochures, and other printed material. WHITE reserves the right to alter its products without notice. This also applies to products already on order provided that such alterations can be made without subsequent changes being necessary in specifications already agreed.

All trademarks in this material are the property of the respective companies. WHITE and the WHITE logotype are trademarks of WHITE Drive Motors & Steering LLC and WHITE Drive Motors and Steering Sp. z o.o..

All rights reserved.

Archivierung: 11/2025

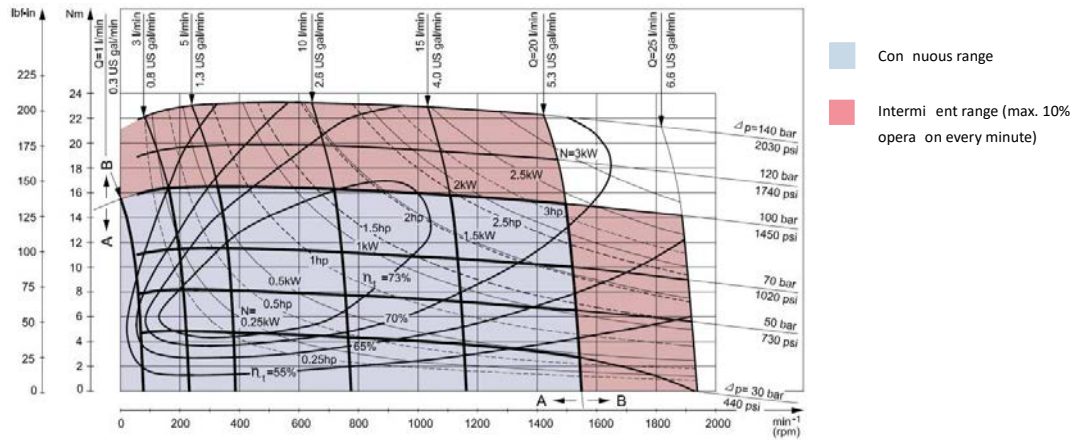
OMM 12.5 function diagram


Figure 19 OMM 12.5 function diagram

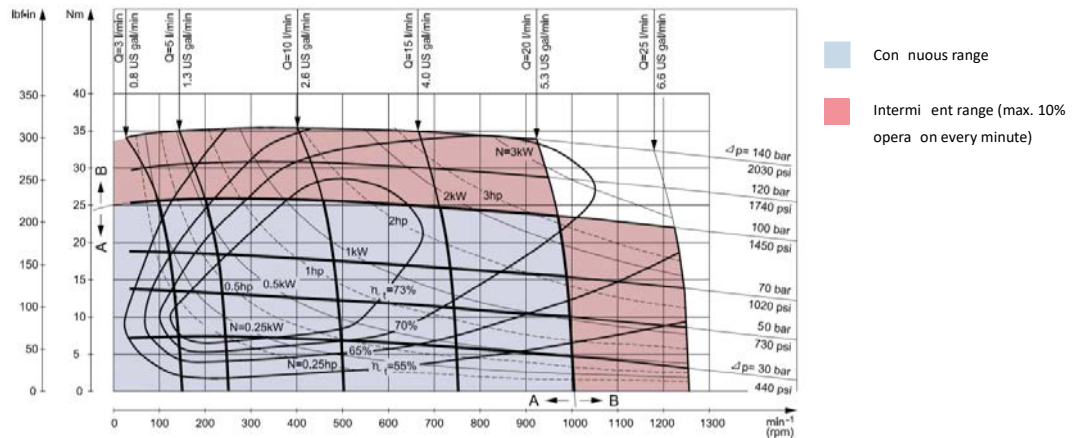
OMM 20 function diagram


Figure 20 OMM 20 function diagram

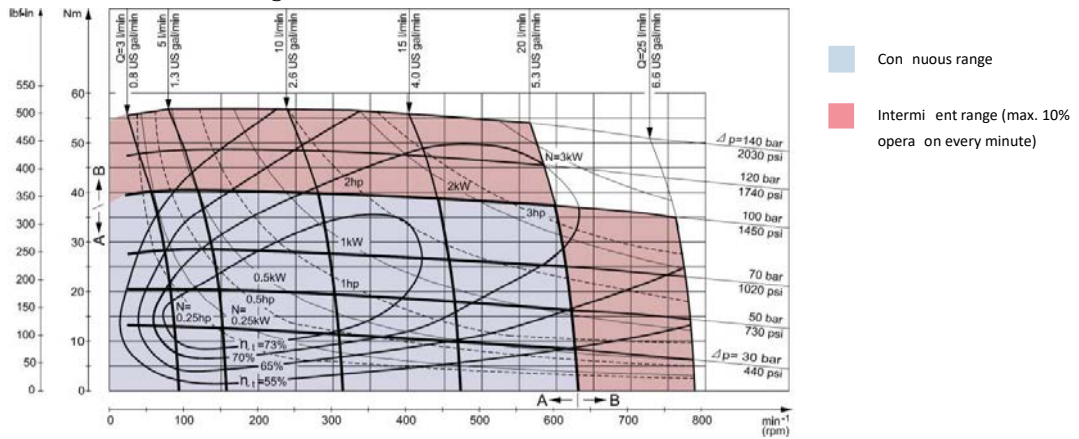
OMM 32 function diagram


Figure 21 OMM 32 function diagram

WHITE can accept no responsibility for possible errors in catalogues, brochures, and other printed material. WHITE reserves the right to alter its products without notice. This also applies to products already on order provided that such alterations can be made without subsequent changes being necessary in specifications already agreed.

All trademarks in this material are the property of the respective companies. WHITE and the WHITE logotype are trademarks of WHITE Drive Motors & Steering LLC and WHITE Drive Motors and Steering Sp. z o.o..

All rights reserved.

Archivierung: 11/2025

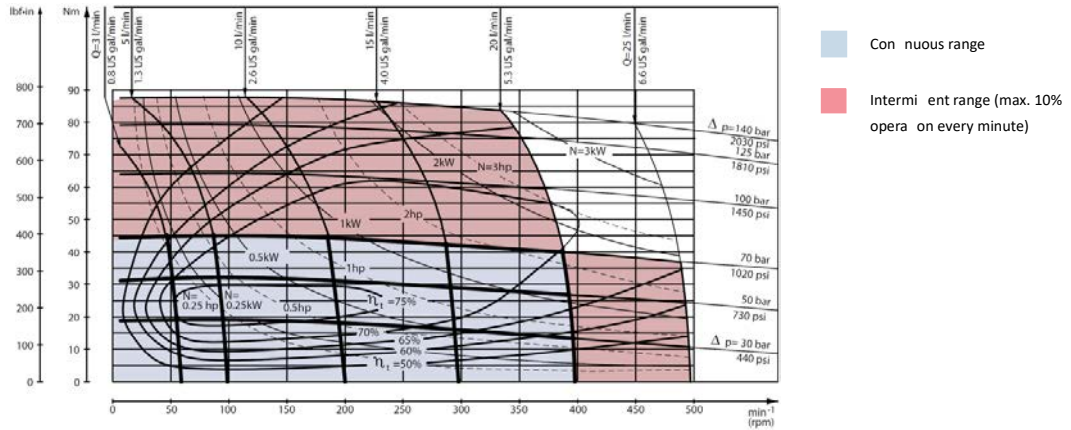
OMM 50 function diagram


Figure 22 OMM 50 function diagram

Shaft

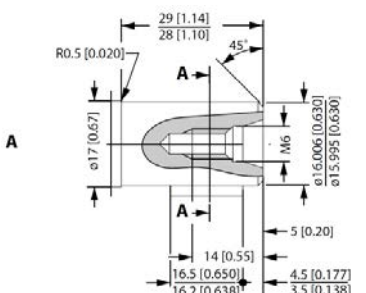
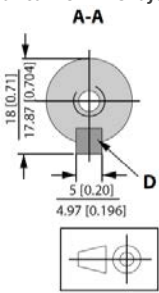
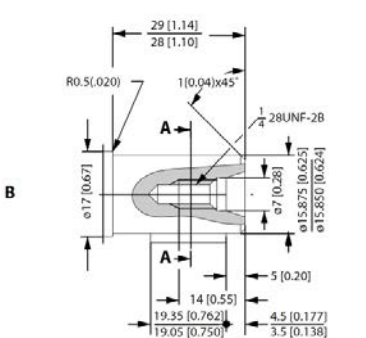
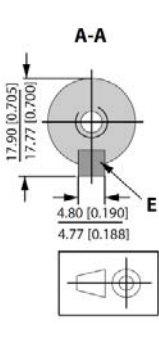
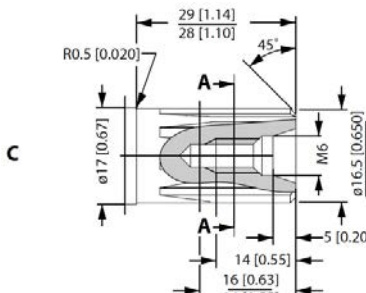
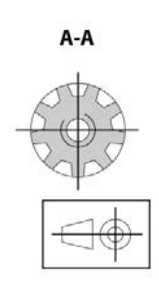
	<p>A: Cylindrical 16 mm shaft</p>  <p> A: Cylindrical shaft 16 mm [0.63 in] C: Parallel key A5 × 5 × 16 DIN 6885 </p>
	<p>B: Cylindrical shaft 5/8 in</p>  <p> US version B: Cylindrical shaft 5/8" D: Parallel key 3/16 × 3/16 × 3/4 in B.S. 46 </p>
	<p>C: Involute splined shaft B17•14</p>  <p> C: Involute splined shaft B17 • 14, DIN 5482 Measurement 19.641 ± 0.04 mm over 3 mm pins deviates from DIN 5482 </p>

Table 9 OMM shaft versions

WHITE can accept no responsibility for possible errors in catalogues, brochures, and other printed material. WHITE reserves the right to alter its products without notice. This also applies to products already on order provided that such alterations can be made without subsequent changes being necessary in specifications already agreed.

All trademarks in this material are the property of the respective companies. WHITE and the WHITE logo are trademarks of WHITE Drive Motors & Steering LLC and WHITE Drive Motors and Steering Sp. z o.o..

All rights reserved.

Archivierung: 11/2025

Port thread versions

	<p>G main ports</p> <p>A: G main ports E: ISO 228/1 – G3/8</p>
	<p>UNF main ports</p> <p>B: UNF main ports F: 9/16-18 UNF O-ring boss port</p>
	<p>G drain ports</p> <p>C: G main ports G: ISO 228/1 – G1/8</p>
	<p>UNF drain ports</p> <p>C: UNF drain ports G: 3/8 – 24 UNF O-ring port</p>

Table 10 OMM Port thread version

WHITE can accept no responsibility for possible errors in catalogues, brochures, and other printed material. WHITE reserves the right to alter its products without notice. This also applies to products already on order provided that such alterations can be made without subsequent changes being necessary in specifications already agreed.

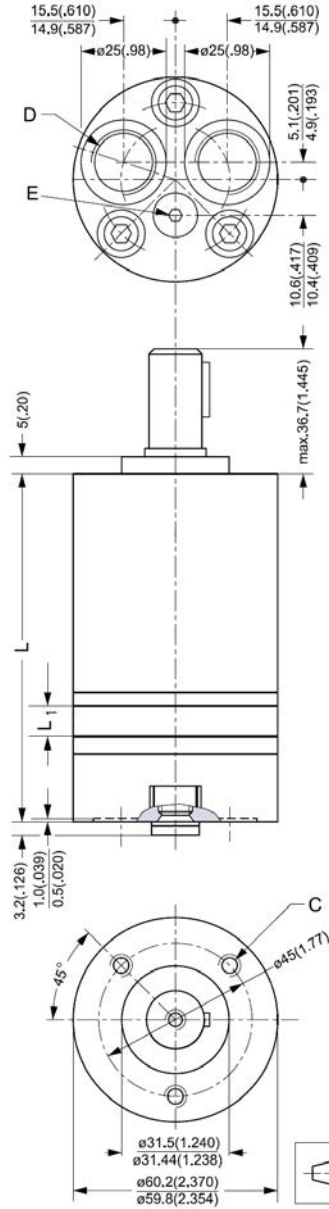
All trademarks in this material are the property of the respective companies. WHITE and the WHITE logotype are trademarks of WHITE Drive Motors & Steering LLC and WHITE Drive Motors and Steering Sp. z o.o..

All rights reserved.

Archivierung: 11/2025

Dimensions

OMM end port, European version



C: M6; 10 mm [0.39 in] deep
D: G 3/8; 12 mm [0.47 in] deep
E: Drain connection G 1/8; 8 mm [0.39 in] deep

Figure 23 OMM end port EU version

Weight and dimensions

Type		OMM					
		8	12.5	20	32	40	50
Length	L _{max} mm [in]	104.0 [4.09]	106.0 [4.17]	109.0 [4.29]	114.0 [4.49]	118.0 [4.65]	122.0 [4.80]
	L ₁ mm [in]	3.5 [0.14]	5.5 [0.22]	8.5 [0.33]	13.5 [0.53]	17.0 [0.67]	21.5 [0.85]
Weight	kg [lb]	1.9 [4.2]	2.0 [4.4]	2.1 [4.6]	2.2 [4.8]	2.3 [5.1]	2.4 [5.3]

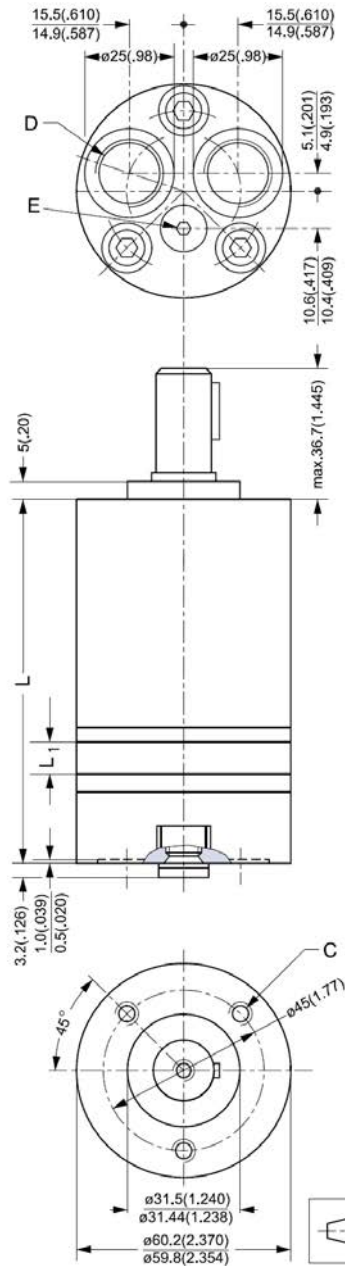
Table 11 OMM End port EU version weight and dimensions

WHITE can accept no responsibility for possible errors in catalogues, brochures, and other printed material. WHITE reserves the right to alter its products without notice. This also applies to products already on order provided that such alterations can be made without subsequent changes being necessary in specifications already agreed.

All trademarks in this material are the property of the respective companies. WHITE and the WHITE logotype are trademarks of WHITE Drive Motors & Steering LLC and WHITE Drive Motors and Steering Sp. z o.o.

All rights reserved.

Archivierung: 11/2025

OMM end port, US version


C: 1/4 - 28 UNF - 2B; min. 10 mm [0.39 in] deep
 D: 9/16 - 18 UNF; 12 mm [0.47 in] deep O-ring boss port
 E: 3/8 - 24 UNF; 8 mm [0.39 in] deep O-ring port

Figure 24 OMM end port US version

Weight and dimensions

Type		OMM					
		8	12.5	20	32	40	50
Length	L_{\max} mm [in]	104.0 [4.09]	106.0 [4.17]	109.0 [4.29]	114.0 [4.49]	118.0 [4.65]	122.0 [4.80]
	L_1 mm [in]	3.5 [0.14]	5.5 [0.22]	8.5 [0.33]	13.5 [0.53]	17.0 [0.67]	21.5 [0.85]
Weight	kg [lb]	1.9 [4.2]	2.0 [4.4]	2.1 [4.6]	2.2 [4.8]	2.3 [5.1]	2.4 [5.3]

Table 12 OMM End port US version weight and dimensions

WHITE can accept no responsibility for possible errors in catalogues, brochures, and other printed material. WHITE reserves the right to alter its products without notice. This also applies to products already on order provided that such alterations can be made without subsequent changes being necessary in specifications already agreed.

All trademarks in this material are the property of the respective companies. WHITE and the WHITE logotype are trademarks of WHITE Drive Motors & Steering LLC and WHITE Drive Motors and Steering Sp. z o.o.

All rights reserved.

Archivierung: 11/2025

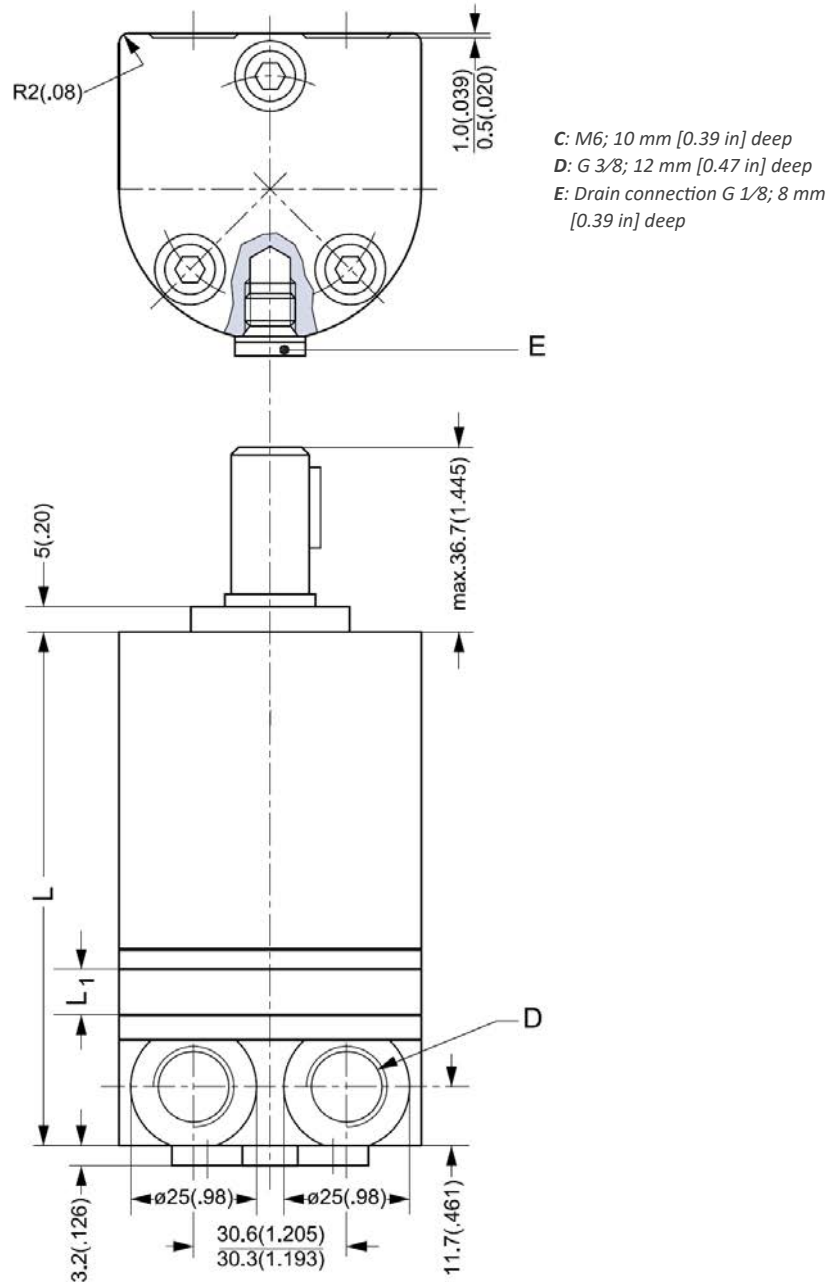
OMM side port version, European version


Figure 25 OMM side port version, EU version

Weight and dimensions

Type		OMM					
		8	12.5	20	32	40	50
Length	L _{max} mm [in]	104.0 [4.09]	106.0 [4.17]	109.0 [4.29]	114.0 [4.49]	118.0 [4.65]	122.0 [4.80]
	L ₁ mm [in]	3.5 [0.14]	5.5 [0.22]	8.5 [0.33]	13.5 [0.53]	17.0 [0.67]	21.5 [0.85]
Weight	kg [lb]	1.9 [4.2]	2.0 [4.4]	2.1 [4.6]	2.2 [4.8]	2.3 [5.1]	2.4 [5.3]

Table 13 OMM Side port EU version weight and dimensions

WHITE can accept no responsibility for possible errors in catalogues, brochures, and other printed material. WHITE reserves the right to alter its products without notice. This also applies to products already on order provided that such alterations can be made without subsequent changes being necessary in specifications already agreed.

All trademarks in this material are the property of the respective companies. WHITE and the WHITE logotype are trademarks of WHITE Drive Motors & Steering LLC and WHITE Drive Motors and Steering Sp. z o.o..

All rights reserved.

Archivierung: 11/2025

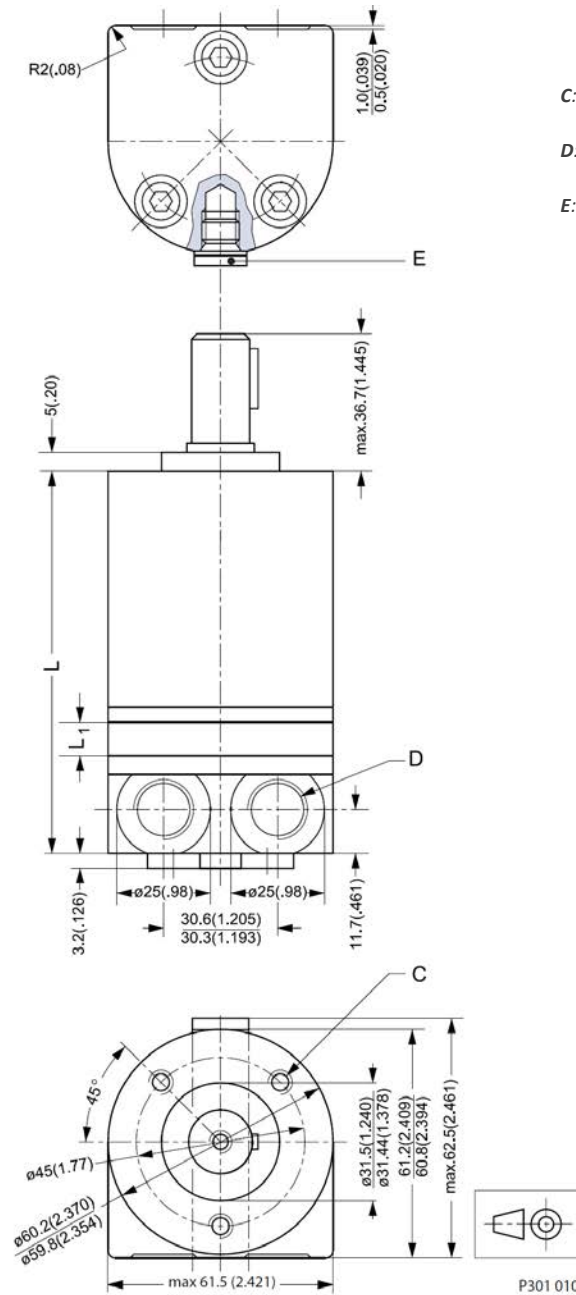
OMM side port, US version


Figure 26 OMM side port US version

Weight and dimensions

Type		OMM				
		8	12.5	20	32	50
Length	L _{max} mm [in]	104.0 [4.09]	106.0 [4.17]	109.0 [4.29]	114.0 [4.49]	122.0 [4.80]
	L ₁ mm [in]	3.5 [0.14]	5.5 [0.22]	8.5 [0.33]	13.5 [0.53]	21.5 [0.85]
Weight	kg [lb]	1.9 [4.2]	2.0 [4.4]	2.1 [4.6]	2.2 [4.8]	2.4 [5.3]

Table 14 OMM side port US version weight and dimensions

WHITE can accept no responsibility for possible errors in catalogues, brochures, and other printed material. WHITE reserves the right to alter its products without notice. This also applies to products already on order provided that such alterations can be made without subsequent changes being necessary in specifications already agreed.

All trademarks in this material are the property of the respective companies. WHITE and the WHITE logotype are trademarks of WHITE Drive Motors & Steering LLC and WHITE Drive Motors and Steering Sp. z o.o.

All rights reserved.

Archivierung: 11/2025

Chapter 4 Accessories

Topics:

- *2 bolt flange kit, code no. 151G0211*

WHITE can accept no responsibility for possible errors in catalogues, brochures, and other printed material. WHITE reserves the right to alter its products without notice. This also applies to products already on order provided that such alterations can be made without subsequent changes being necessary in specifications already agreed.

All trademarks in this material are the property of the respective companies. WHITE and the WHITE logotype are trademarks of WHITE Drive Motors & Steering LLC and WHITE Drive Motors and Steering Sp. z o.o..

All rights reserved.

Archivierung: 11/2025

2 bolt flange kit, code no. 151G0211

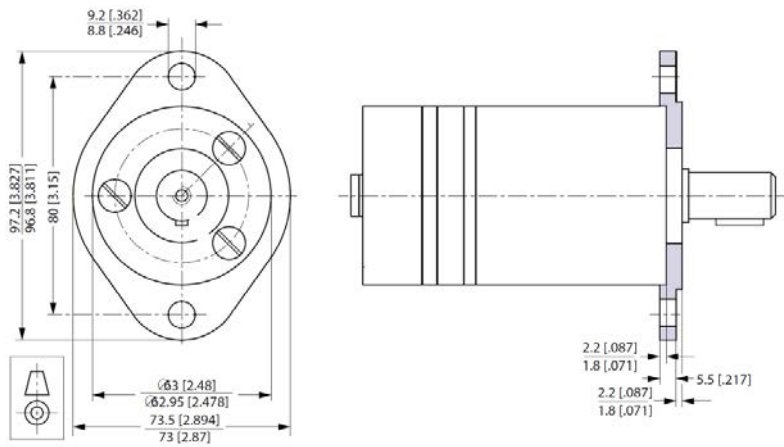


Figure 27 2 bolt flange kit 151G0211

WHITE can accept no responsibility for possible errors in catalogues, brochures, and other printed material. WHITE reserves the right to alter its products without notice. This also applies to products already on order provided that such alterations can be made without subsequent changes being necessary in specifications already agreed.

All trademarks in this material are the property of the respective companies. WHITE and the WHITE logotype are trademarks of WHITE Drive Motors & Steering LLC and WHITE Drive Motors and Steering Sp. z o.o..

All rights reserved.

Archivierung: 11/2025

Chapter 5

Hydraulic systems

Topics:

- *Installation of the Orbital Motors*
- *Starting up and running in the hydraulic system*
- *Operation*
- *Maintenance*

WHITE can accept no responsibility for possible errors in catalogues, brochures, and other printed material. WHITE reserves the right to alter its products without notice. This also applies to products already on order provided that such alterations can be made without subsequent changes being necessary in specifications already agreed.

All trademarks in this material are the property of the respective companies. WHITE and the WHITE logotype are trademarks of WHITE Drive Motors & Steering LLC and WHITE Drive Motors and Steering Sp. z o.o..

All rights reserved.

Archivierung: 11/2025

Installation of the Orbital Motors

About the design

- To ensure efficient operation all hydraulic components must be installed according to their individual instructions.
- The pump line must include a manometer connection.
- To ensure designed contact and minimize the tension all mounting rings must be tight. Hydraulic lines must be fitted correctly to prevent air entrapment.

About the assembly

- Follow the mounting instructions printed on the inside of the cardboard box.
- To prevent contamination, do not dismantle the plastic plugs from the connection ports until the parts are ready to be assembled.
- Check that there is full face contact between the motor mounting ring and the main part.
- Do not force the motor into place when tightening the mounting screws.
- Avoid unsuitable sealing material on joints such as pack twine, Teflon and others.
- Use only bonded seals, O-rings, steel washers and the like.
- When tightening the joints never use a torque higher than the maximum tightening torque stated in the instructions.
- Make sure that the cleanliness of the oil used is better than 20/16 (ISO 4406). Always use a filter for oil replacement.

Starting up and running in the hydraulic system

- Through a small-meshed filter fill the tank with oil to the upper oil level mark.
- Start the drive engine, and if possible, let it work at its lowest speed. If the motor is provided with bleed screws, keep these open until the emerging oil is non-foaming.
- Check that all components are correctly connected (pump following the right direction of rotation etc.).
- In load-sensing systems, also make sure that the signal lines are bled.
- Indications of air in the hydraulic system:
 - foam in the tank
 - jerky movements of motor and cylinder
 - noise
- If required, refill with oil.
- Connect the system to a separate tank that includes a filter (efficiency max. 10 µm) with twice the capacity of the maximum flow. Let the entire system run without load (no pressure) for about 30 minutes.
- Do not load the system until it is all bled and clean.
- Check the tightness of the system and make sure that its performance is satisfactory.
- Change the oil regularly, and if so required, refill with oil.

WHITE can accept no responsibility for possible errors in catalogues, brochures, and other printed material. WHITE reserves the right to alter its products without notice. This also applies to products already on order provided that such alterations can be made without subsequent changes being necessary in specifications already agreed.

All trademarks in this material are the property of the respective companies. WHITE and the WHITE logotype are trademarks of WHITE Drive Motors & Steering LLC and WHITE Drive Motors and Steering Sp. z o.o.

All rights reserved.

Archivierung: 11/2025

Operation

- Do not expose the motor to pressures, pressure drops and speeds above the max. values stated in the catalogue.
- Filter the oil to ensure that the contamination level 20/16 (ISO 4406) or better.

Maintenance

- When working with hydraulic systems, the main criteria of operation safety and endurance is careful maintenance.
- Always renew and replace oil, oil filters and air filters according to the instructions given by the respective manufacturers.
- Regularly check the condition of the oil.
- Frequently check system health and oil level.

WHITE can accept no responsibility for possible errors in catalogues, brochures, and other printed material. WHITE reserves the right to alter its products without notice. This also applies to products already on order provided that such alterations can be made without subsequent changes being necessary in specifications already agreed.

All trademarks in this material are the property of the respective companies. WHITE and the WHITE logotype are trademarks of WHITE Drive Motors & Steering LLC and WHITE Drive Motors and Steering Sp. z o.o..

All rights reserved.

Archivierung: 11/2025

Figures

Figure 1 Speed	6
Figure 2 Torque	6
Figure 3 Output	6
Figure 4 OML max. return pressure.....	9
Figure 5 Pressure drop in motor.....	9
Figure 6 Direction of shaft rotation	10
Figure 7 Permissible shaft loads for OML.....	10
Figure 8 OML 8 function diagram.....	10
Figure 9 OML 12.5 function diagram.....	11
Figure 10 OML 20 function diagram.....	11
Figure 11 OML 32 function diagram.....	11
Figure 12 OML End Port EU version	13
Figure 13 OML End port US version	14
Figure 14 Max. return pressure without drain line or max. pressure in drain line	17
Figure 15 Pressure drop in OMM motor	17
Figure 16 Direction of shaft rotation	18
Figure 17 OMM Permissible shaft loads.....	18
Figure 18 OMM 8 function diagram	18
Figure 19 OMM 12.5 function diagram	19
Figure 20 OMM 20 function diagram	19
Figure 21 OMM 32 function diagram	19
Figure 22 OMM 50 function diagram	20
Figure 23 OMM end port EU version.....	22
Figure 24 OMM end port US version.....	23
Figure 25 OMM side port version, EU version.....	24
Figure 26 OMM side port US version	25
Figure 27 2 bolt flange kit 151G0211	27

Tables

Table 1 Technical data for OML with 16 mm and 5/8 in cylindrical shaft	8
Table 2 Max. inlet pressure.....	9
Table 3 OML Shaft versions	12
Table 4 OML Port thread version.....	12
Table 5 OML End port EU version weight and dimensions.....	13
Table 6 OML End port US version weight and dimensions.....	14
Table 7 OMM Technical data	16
Table 8 Max. inlet pressure.....	17
Table 9 OMM shaft versions	20
Table 10 OMM Port thread version	21
Table 11 OMM End port EU version weight and dimensions.....	22
Table 12 OMM End port US version weight and dimensions	23
Table 13 OMM Side port EU version weight and dimensions	24
Table 14 OMM side port US version weight and dimensions.....	25

WHITE can accept no responsibility for possible errors in catalogues, brochures, and other printed material. WHITE reserves the right to alter its products without notice. This also applies to products already on order provided that such alterations can be made without subsequent changes being necessary in specifications already agreed.

All trademarks in this material are the property of the respective companies. WHITE and the WHITE logotype are trademarks of WHITE Drive Motors & Steering LLC and WHITE Drive Motors and Steering Sp. z o.o..

All rights reserved.

Archivierung: 11/2025



White Drive Motors & Steering, LLC
110 Bill Bryan Blvd, Hopkinsville, Kentucky, 42240

White Drive Motors and Steering sp. z o.o.
ul. Logistyczna 1, Bielany Wrocławskie, 55-040 Kobierzyce

whitedriveproducts.com