

Catalogue MSG11-3500/UK

**Characteristics / Ordering Code**
**Pressure Relief Valve  
Series ZDV**

Pilot operated pressure relief valves series ZDV are designed for maximum flow rates.

The relief function can be located between P and T, A and T, B and T or A and T + B and T for typical pressure relief functions.

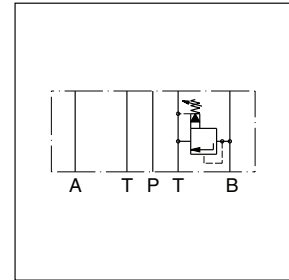
For a pre-charge function the ZDV can be ordered with pressure function between A and B + B and A.

**Features**

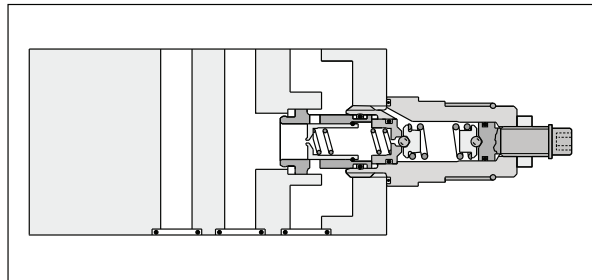
- High flow capacity
- Pressure function in P, A, B or A + B
- Sizes  
ZDV01 - NG06 (CETOP 03)  
ZDV02 - NG10 (CETOP 05)



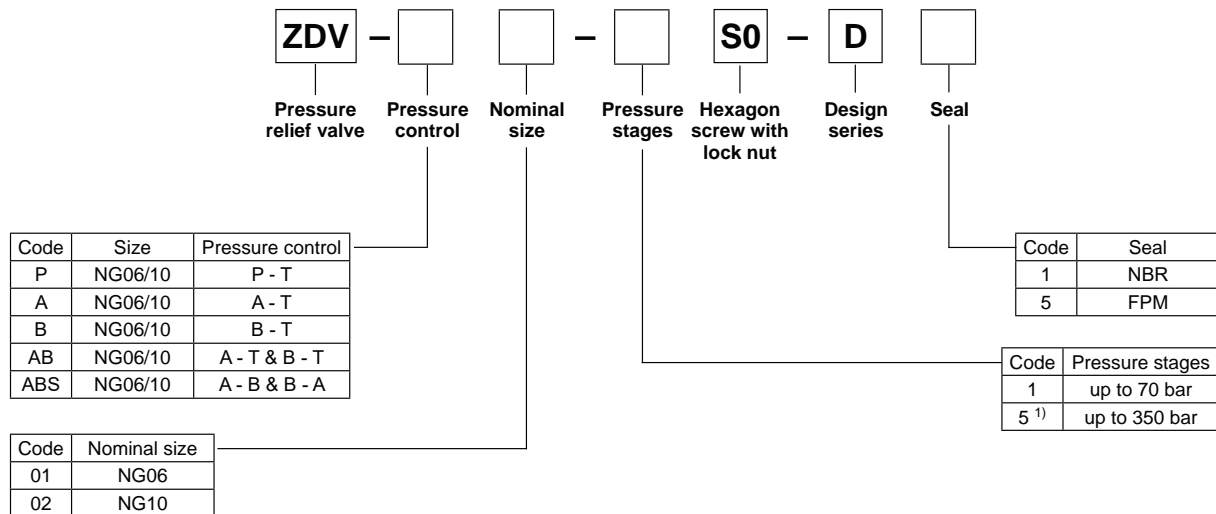
ZDV-P01



ZDV-B02



ZDV-B02

**7**
**Ordering code**


Ordering code details see end of chapter.

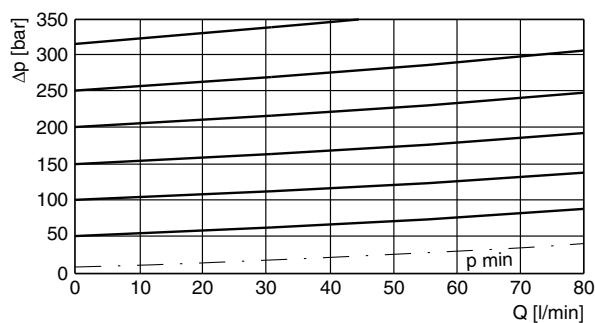
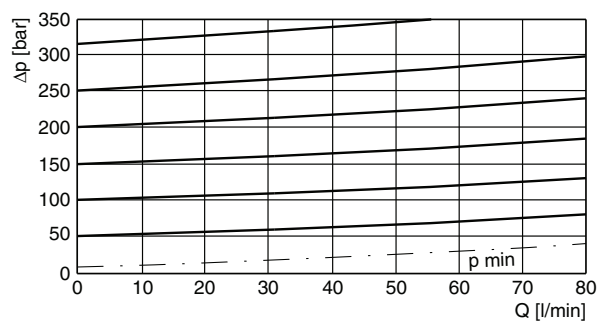
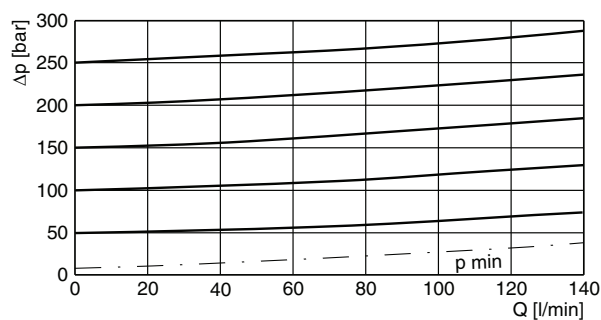
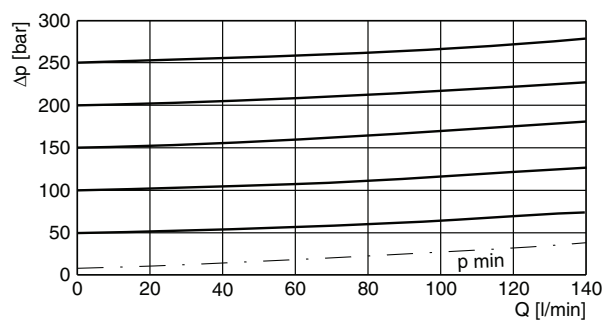
<sup>1)</sup> Code ABS and size 10 up to 315 bar.

ZDV UK.indd 27.03.24



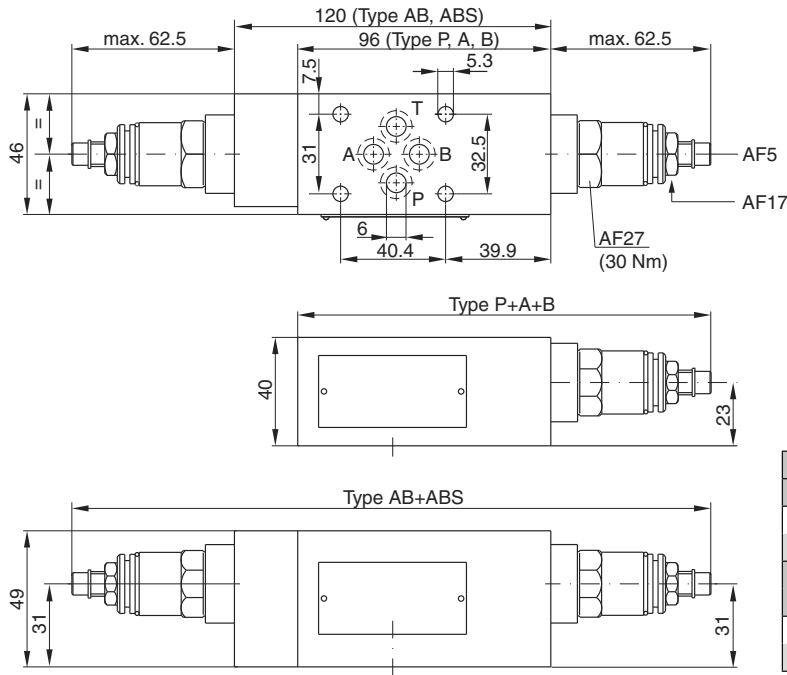
**Technical data**

General			NG06	NG10
Size				
Mounting interface			DIN 24340 A6 ISO 4401 NFPA D03	DIN 24340 A10 ISO 4401 NFPA D05
			CETOP RP 121	
Mounting position			unrestricted	
Ambient temperature	[°C]		-20...+60	
MTTF <sub>D</sub> value	[years]		150	
Weight		[kg]	1.6	3.0
	1 cartridge			
	2 cartridges		2.5	3.7
Hydraulic				
Max. operating pressure	[bar]		350 (ZDV-ABS 315)	315
Nominal flow	[l/min]		80	140
Fluid			Hydraulic oil according to DIN 51524	
Fluid temperature	[°C]		-20...+70 (NBR: -25...+70)	
Viscosity	permitted	[cSt] / [mm <sup>2</sup> /s]	20 ... 400	
	recommended	[cSt] / [mm <sup>2</sup> /s]	30 ... 80	
Filtration			ISO 4406 (1999); 18/16/13	

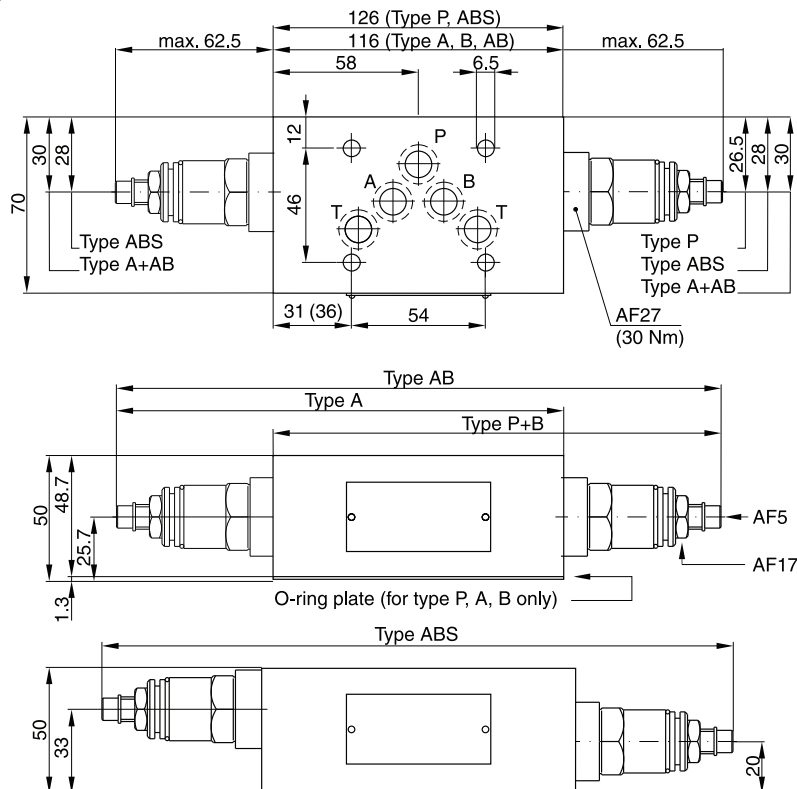
**p/Q performance curves**
**ZDV-P/A/B/ABS01**

**ZDV-AB01**

**ZDV-P/A/B/AB02**

**ZDV-ABS02**


All characteristic curves measured with HLP46 at 50 °C.

ZDV UK.indd 27.03.24

Catalogue MSG11-3500/UK  
**Dimensions**
**Pressure Relief Valve  
 Series ZDV**
**ZDV01**


Seal kit	
Seal	Order code
1	098-91182-0
5	098-91183-0
Complete cartridge	
Pressure stage	Order code
1	098-91116-0
5	098-91117-0

**7 ZDV02**


Seal kit	
Seal	Order code
1	098-91076-0
5	098-91077-0
Complete cartridge	
Pressure stage	Order code
1	098-91116-0
5	098-91117-0



ZDV UK.indd 27.03.24

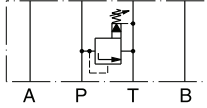


Catalogue MSG11-3500/UK  
**Ordering Code Details**

**Pressure Relief Valve  
 Series ZDV**

**ZDV01**

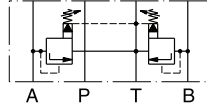
Pressure control P-T



Series  
 ZDV-P01-1-S0-D1  
 ZDV-P01-5-S0-D1

Order No.  
 098-91201-0  
 098-91202-0

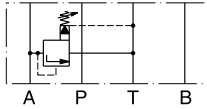
Pressure control A-T & B-T



Series  
 ZDV-AB01-1-S0-D1  
 ZDV-AB01-5-S0-D1

Order No.  
 098-91207-0  
 098-91208-0

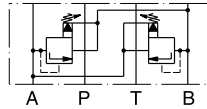
Pressure control A-T



Series  
 ZDV-A01-1-S0-D1  
 ZDV-A01-5-S0-D1

Order No.  
 098-91203-0  
 098-91204-0

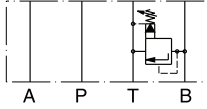
Pressure control A-B & B-A



Series  
 ZDV-ABS01-1-S0-D1  
 ZDV-ABS01-5-S0-D1

Order No.  
 098-91209-0  
 098-91210-0

Pressure control B-T

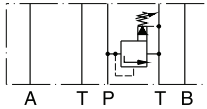


Series  
 ZDV-B01-1-S0-D1  
 ZDV-B01-5-S0-D1

Order No.  
 098-91205-0  
 098-91206-0

**ZDV02**

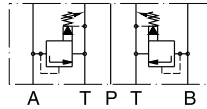
Pressure control P-T



Series  
 ZDV-P02-1-S0-D1  
 ZDV-P02-5-S0-D1

Order No.  
 098-91034-0  
 098-91035-0

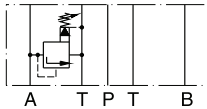
Pressure control A-T & B-T



Series  
 ZDV-AB02-1-S0-D1  
 ZDV-AB02-5-S0-D1

Order No.  
 098-91040-0  
 098-91041-0

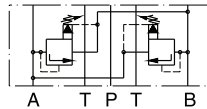
Pressure control A-T



Series  
 ZDV-A02-1-S0-D1  
 ZDV-A02-5-S0-D1

Order No.  
 098-91036-0  
 098-91037-0

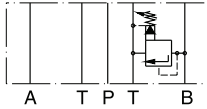
Pressure control A-B & B-A



Series  
 ZDV-ABS02-1-S0-D1  
 ZDV-ABS02-5-S0-D1

Order No.  
 098-91042-0  
 098-91043-0

Pressure control B-T



Series  
 ZDV-B02-1-S0-D1  
 ZDV-B02-5-S0-D1

Order No.  
 098-91038-0  
 098-91039-0

7